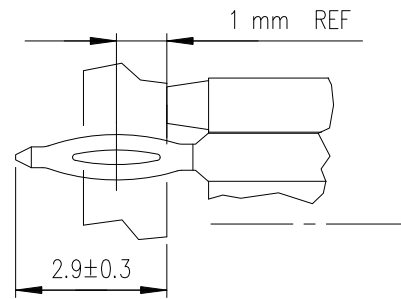


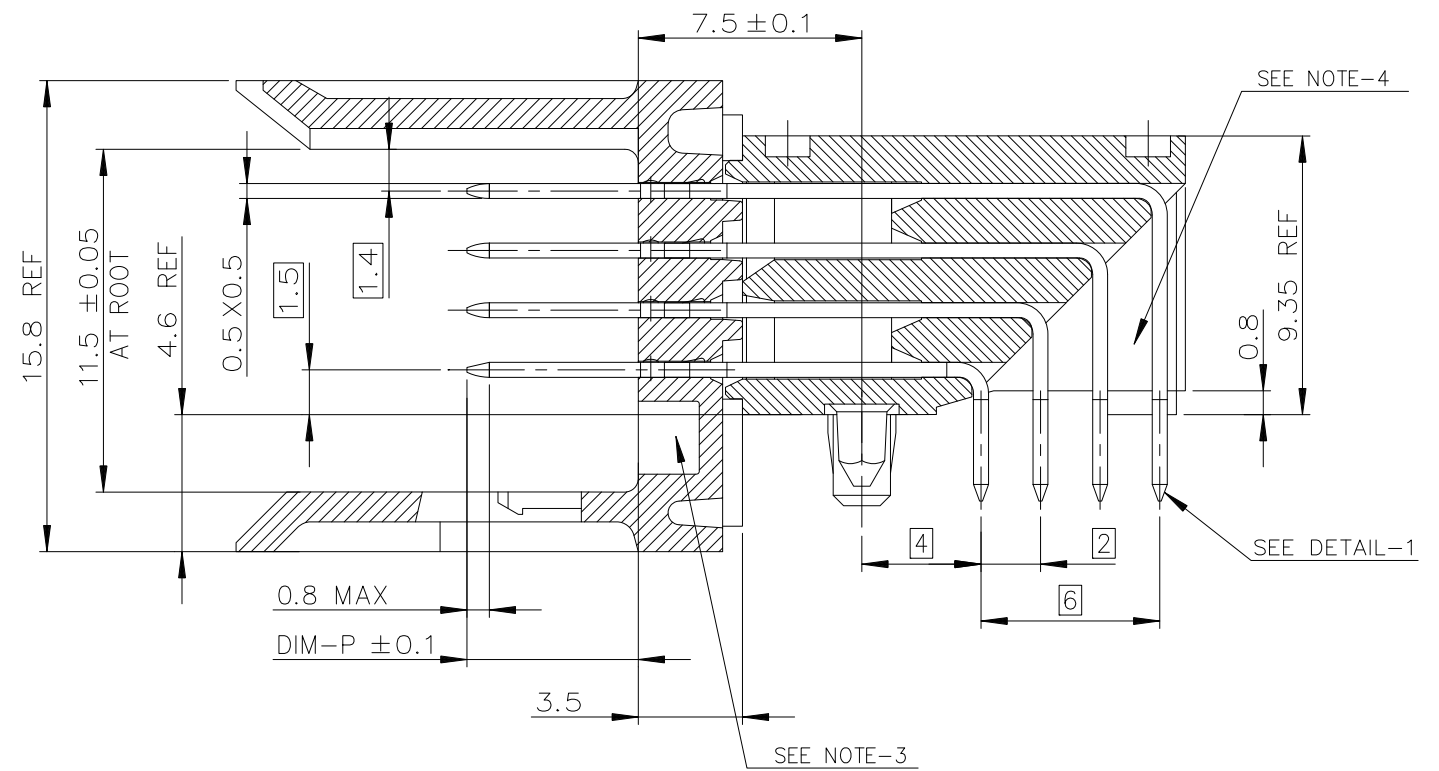
DETAIL-1: PRESS-FIT TAIL



NOTES:

1. MATERIAL : BODY : LCP UL94-V0  
: CONTACT : COPPER ALLOY.
2. FOR PLATING PERFORMANCE REFER DRAWING # 101594.09
3. CODING RECESS FOR 8MM EXTENDED KEYS
4. CENTRAL WALL WITH END REAR SUPPORT
5. PACKAGING IN TRAY + COVER, IF SUFFIX "P" IS ADDED IN P/N PACKAGING IS IN TRAYS BUT CONNECTOR MARKING IS WITHOUT "P"  
EXAMPLE: HM1XXXXXXXXXXHP, MARKED HM1XXXXXXXXXXH
6. THIS PRODUCT MEETS EUROPEAN UNION DIRECTIVES AND OTHER COUNTRY REGULATIONS AS DESCRIBED IN GS-47- 0004
7. A symbol will be next to any dimension, view, or note which has been modified with the current drawing revision.

SECTION-A SCALE: 4/1



GENERAL CHARACTERISTICS AND ROHS INFORMATIONS:

See PRODUCT SPECIFICATION: GS-12-445

OTHERS INFORMATIONS,SEE DRW C-8626-0151-2

mat'l. code				surface ISO 1302		tolerance ISO 406 ISO 1101		projection		product family METRAL	
ltr				ecn no		dr		date		title	
F				LS05-0056		LGO		2005-07-06		METRAL RA HDR WB CONV	
G				LS06-0097		LGO		2006-07-12		4x12 CTS - PF - PUSH PEG	
H				LS07-0184		MLE		2007-07-25		0°±2°	
J				ELX-I-38935		MINI		2020-11-12		0°±2°	
sheet index				revision sheet		J		1		dwg no C-8626-0151-1	
sheet index				revision sheet		J		1		sheet 1 of 2 size A3	
sheet index				revision sheet		J		1		type Product Customer Drawing	

PART NUMBER :HM1L41LFP000HXPLF

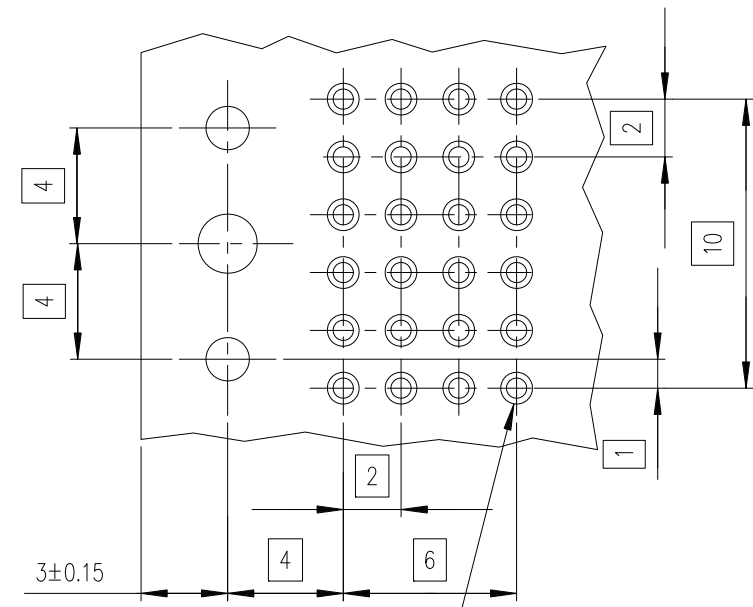
REFER NOTE 2

PART NUMBER

PART NUMBER / CONTACT LOADING					P/N AND PERFORMANCE LEVEL	SP N°
DIM-P ±0.10						
ROW-A	ROW-B	ROW-C	ROW-D			
5.00	5.00	5.00	5.00	HM1L42ADP000HXPLF		
5.75	5.75	5.75	5.75	HM1L42LDP000HXPLF		
6.50	6.50	6.50	6.50	HM1L42DDP000HXPLF		
6.50	5.00	5.00	5.00	HM1L42BDP000HXPLF		
6.50	5.75	5.75	6.50	HM1L42CDP000HXPLF		
5.00	5.00	6.50	5.00	HM1L42ZDP110HXPLF	110	
5.00	5.75	6.50	5.00	HM1L42ZDP430HXPLF	430	
5.00	5.75	5.00	5.00	HM1L42ZDP448HXPLF	448	
5.75	5.00	5.00	5.00	HM1L42ZDP009HXPLF	009	
5.75	6.50	5.75	5.00	HM1L42ZDP424HXPLF	424	
6.50	5.75	6.50	5.75	HM1L42ZDP037HXPLF	037	
6.50	5.75	5.00	5.75	HM1L42ZDP102HXPLF	102	
6.50	6.50	6.50	5.75	HM1L42ZDP135HXPLF	135	
6.50	5.75	5.75	5.75	HM1L42ZDP369HXPLF	369	
8.00	6.50	6.50	6.50	HM1L42ZDPA07HXPLF	A07	

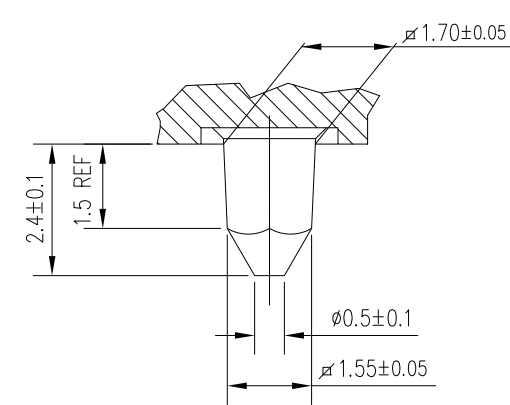
STANDARD MATING LENGTHS = 5.75 (AND 5.00-6.50)

RECOMMENDED PCB LAYOUT  
PER 12MM LENGTH

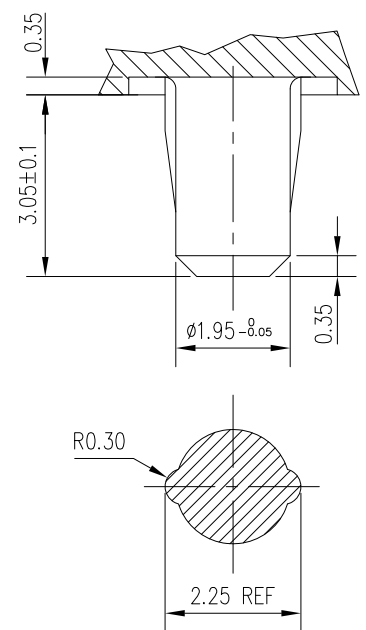


Hole according to product spec  
GS-12-445 (for press-fit) ,  
GS-12-446 (for STB)

DETAIL OF LOCATING PEGS (2x) SCALE 8/1



DETAIL OF CENTRAL PEG SCALE 8/1



OTHERS INFORMATIONS,SEE DRW 8626-0151-1

mat'l. code		surface ISO 1302		tolerance ISO 406 ISO 1101		projection MM		product family METRAL	
ltr		ecn no		dr		date		title	
F		LS05-0056		LGO		2005-07-06		METRAL RA HDR WB CONV	
G		LS06-0097		LGO		2006-07-12		4x12 CTS - PF - PUSH PEG	
H		LS07-0184		MLE		2007-07-25			
J		ELX-I-38935		MINI		2020-11-12			
sheet index		revision sheet		J		1		dwg no C-8626-0151-2	
								sheet 2 of 2	
								size A3	
								type Product Customer Drawing	