

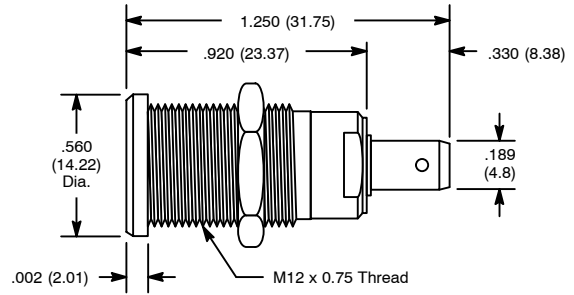
4mm Panel Socket, 4.8mm Tab, Hex Nut

Features

- Fully Insulated
- Nickel Plated Contacts and Hardware
- Accepts Most Types of Shrouded and Unshrouded 4mm Plugs



TL-014



| NTE Type No. | Color | Diag No. |
|--------------|--------|----------|
| 72-037 | Black | TL-014 |
| 72-038 | Blue | TL-014 |
| 72-039 | Green | TL-014 |
| 72-040 | Red | TL-014 |
| 72-041 | White | TL-014 |
| 72-042 | Yellow | TL-014 |

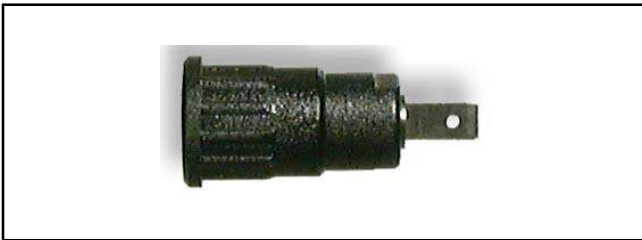
Specifications

IEC 1010 Rating: 1000V CAT2 25 Amps
 Mounting Hole: .472" (12mm)

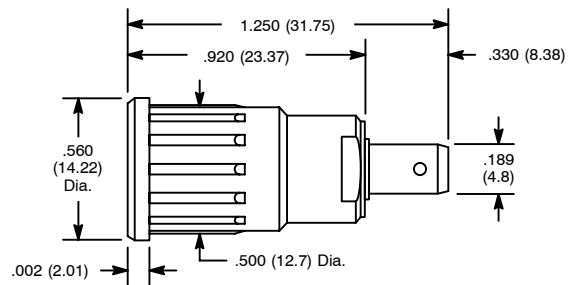
4mm Panel Socket, 4.8mm Tab, Push-In

Features

- Fully Insulated
- Nickel Plated Contacts and Hardware
- Accepts Most Types of Shrouded and Unshrouded 4mm Plugs



TL-015



| NTE Type No. | Color | Diag No. |
|--------------|--------|----------|
| 72-043 | Black | TL-015 |
| 72-044 | Blue | TL-015 |
| 72-045 | Green | TL-015 |
| 72-046 | Red | TL-015 |
| 72-047 | White | TL-015 |
| 72-048 | Yellow | TL-015 |

Specifications

IEC 1010 Rating: 1000V CAT2 25 Amps
 Mounting Hole: .472" (12mm)