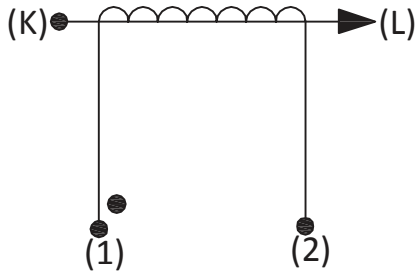


Product Type	Current Transformer
AMGIS Part Number	CT1030

**SCHEMATIC:**



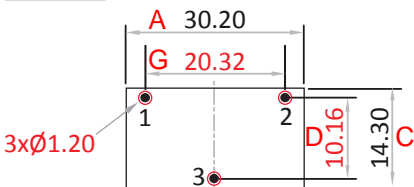
**ELECTRICAL SPECIFICATION:**

Rated input current	= 30Amps
Primary to Secondary isolation	= 2500VAC
Operating Frequency	= 50 / 60 Hz
Turns Ratio	= 1 : 1000
DC Resistance	= 48.00 Ω
Output Voltage	= 3.0V @ 30A / 100Ω, 0.0900W
Io @ Vrms : 4.38V	= 644μArms
Ratio Correction factor (RCF*)	= 1.02 @ 10% (Multiply current reading by this factor to compensate for transformer losses)

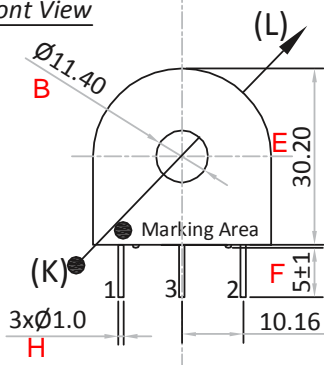
Volt/Amp at rated Ip for different loads			
100Ω	500Ω	2000Ω	5000Ω
0.10	0.47	0.95	1.16

**MECHANICAL SPECIFICATION :**

**Top View (Suggested Pad Layout)**



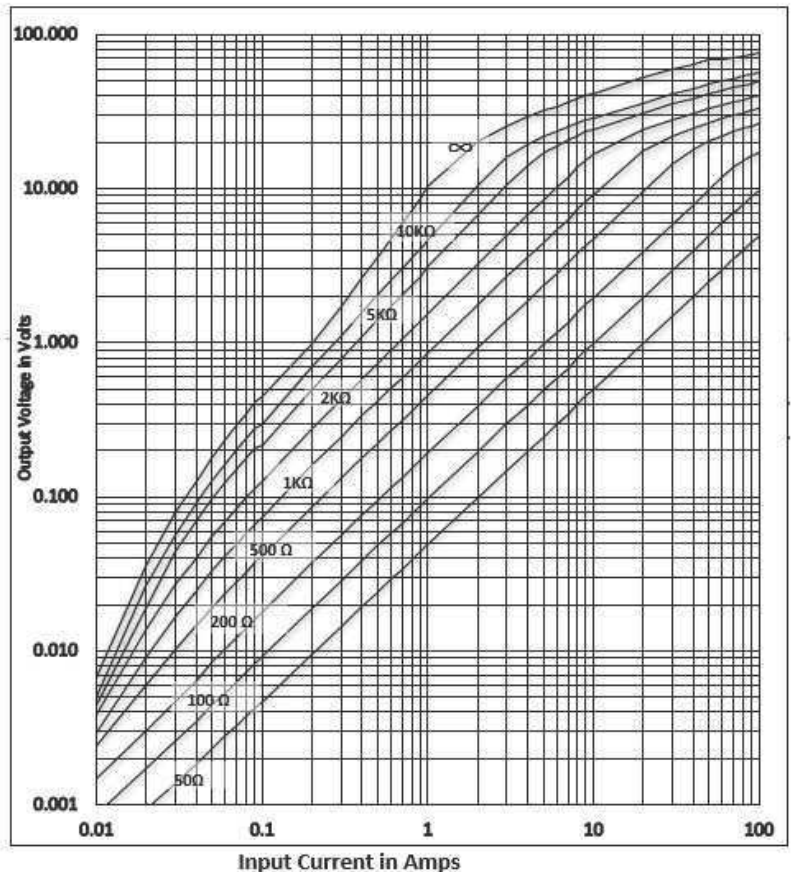
**Front View**



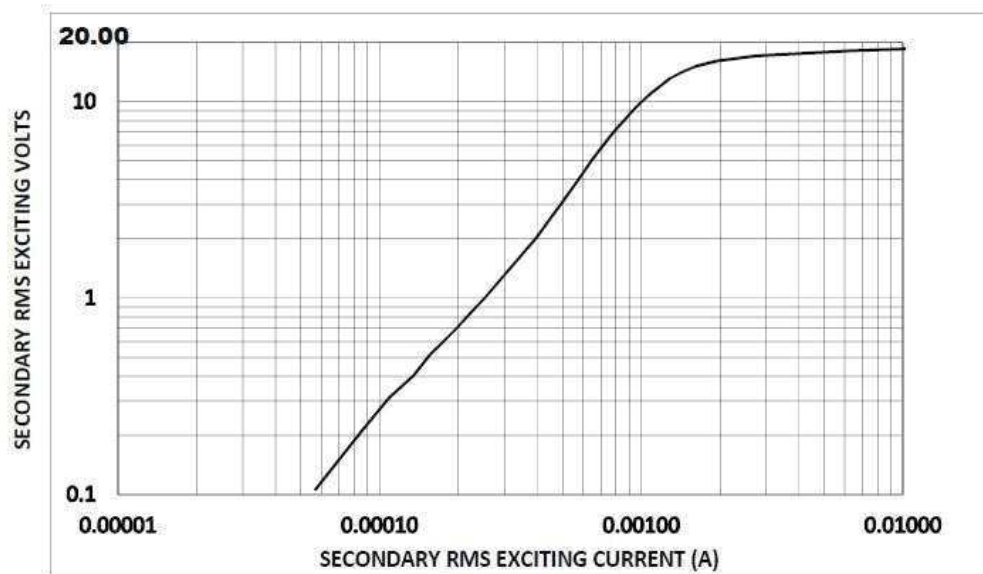
All dimensions are in mm  
Linear dimensional tolerance ±0.2mm

Note : Un-Used pin → #3

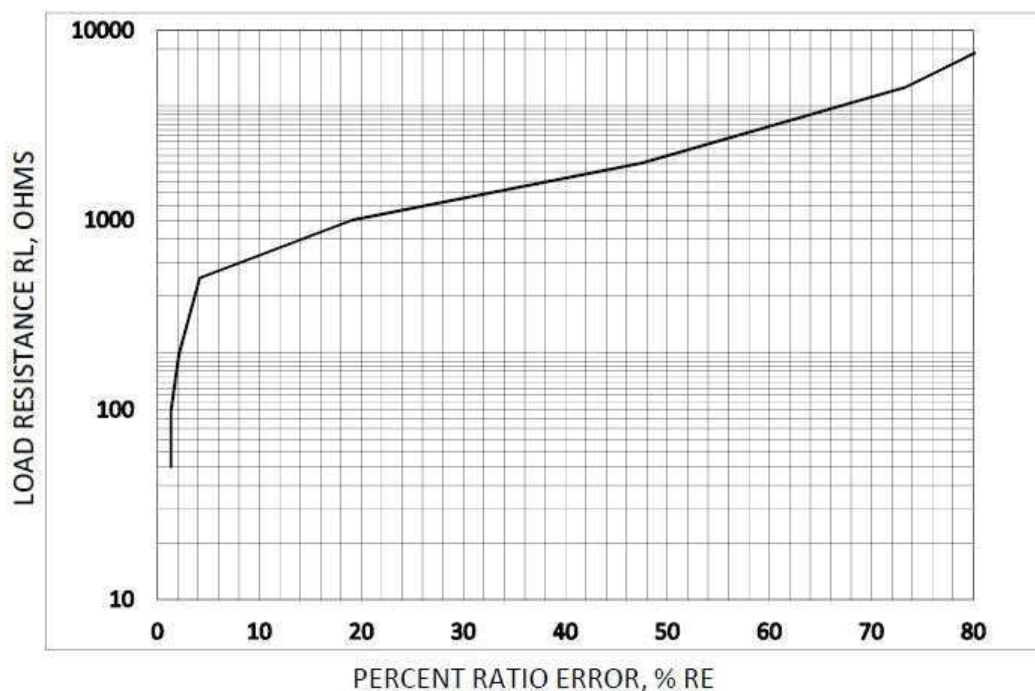
**OUTPUT RESPONSE vs INPUT CURRENT @ RATED BURDEN :**



TYPICAL EXCITATION CURVE :



RATIO ERROR (%) vs RATED BURDEN @ INPUT CURRENT :



TRAFO WEIGHT:

Approx. Weight = 0.0355 kg / pc

MARKING INFORMATION:

Amgis  
CT1030  
Yr/Wk code  
●  
Dot mark for Start pin identification

-----Initial Issue-----	1	0	Balaji. R	18-Nov'2015
Changes	Issue	Rev	Initial	Date