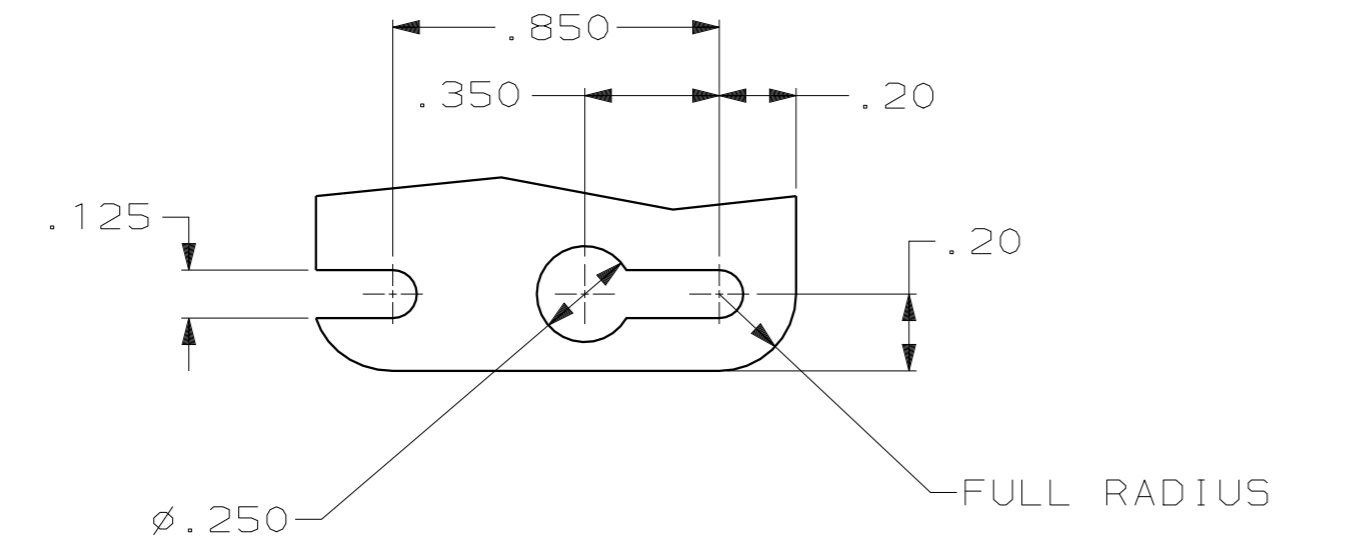
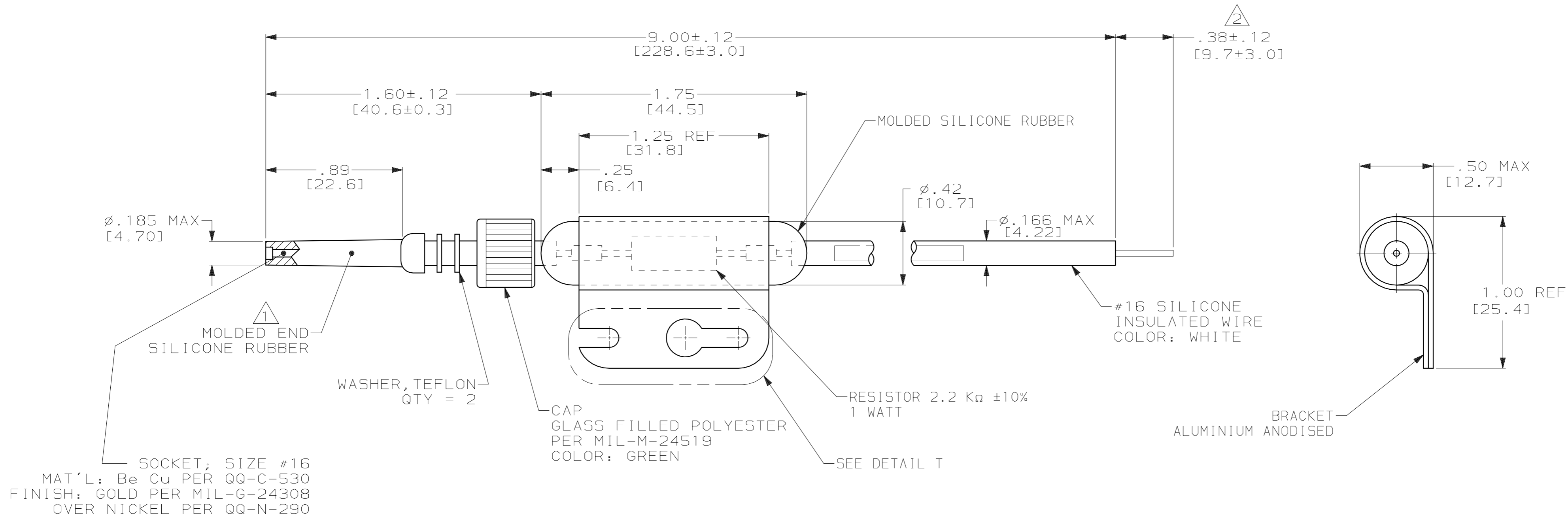


THIS DRAWING IS UNPUBLISHED. RELEASED FOR PUBLICATION
 BY AMP INCORPORATED. ALL RIGHTS RESERVED.

| LOC | DIST | REVISIONS | | | |
|-----|------|-------------|-------------------------|--------|-------|
| P | LTR | DESCRIPTION | DATE | DWN | APVD |
| DF | SO | G | REV PER ECO 05-03298 CT | 6-3-05 | CT DE |

- 1 TO MATE WITH AMP LGH-1/2L RECEPTACLE WITH .89 [22.6] BARREL DEPTH.
- 2 PIG TAIL IS SOLDER DIPPED.
- 3. MARKED PER MIL-STD-130.



859095

859095-1
PART NO.

| | | | | |
|---|--|-------------------------------|---|--|
| THIS DRAWING IS A CONTROLLED DOCUMENT FOR AMP INCORPORATED. IT IS SUBJECT TO CHANGE AND THE CONTROLLING ENGINEERING ORGANIZATION SHOULD BE CONTACTED FOR THE LATEST REVISION. | | DWN C.C. THOMAS 8-31-95 | AMP Incorporated Harrisburg, PA 17105-3608 | |
| DIMENSIONS: INCHES [mm] | | CHK D.EABY 10-12-95 | NAME D.EABY | |
| TOLERANCES UNLESS OTHERWISE SPECIFIED: 0 PLC ±- 1 PLC ±- 2 PLC ±.02 [0.5] 3 PLC ±.005 [0.13] 4 PLC ±- ANGLES ±- FINISH - | | APVD D.EABY 10-12-95 | PRODUCT SPEC - | |
| MATERIAL - | | APPLICATION SPEC - | DRAWING NO A2 00779 | |
| | | WEIGHT - | CAGE CODE 00779 | |
| | | CUSTOMER DRAWING | SCALE 2:1 SHEET 1 OF 1 REV G | |