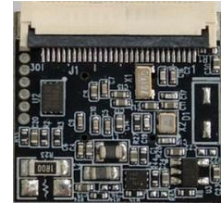
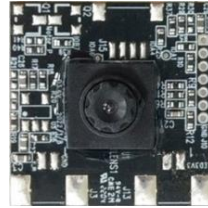
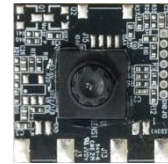


The module can recognize two gestures, scissors and paper. Devices can be switched by gesture without touching.



- Recognize two gestures, scissors and paper.
- Real-time edge decision-making without network connection.



Contents:

- Gesture Recognition Module
- 2 IR LEDs

Application

- Smart home appliances with touchless switch
- Intelligent power switch
- Interactive controls LED, audio, and motor
- Interactive toys

Ratings / Specifications

Ratings

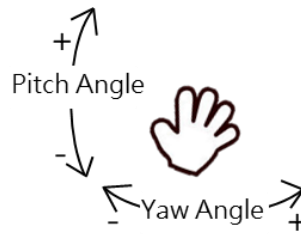
Item	Rated values
Supply voltage	3.3 VDC 5.0 VDC (Option)
Consumption current	<0.21 A
Operating temperature	0 to +50°C
Storage temperature	-30 to +70°C

Specifications

Angle of View	Angle
Horizontal detection range (angle of view)	50°
Vertical detection range (angle of view)	50°



Angle Range	Angle
Pitch angle (up-down)	$\pm 40^\circ$
Yaw angle (left-right)	$\pm 40^\circ$

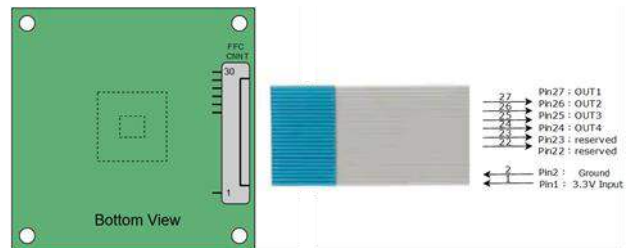


Host Communication Specifications	Specifications
Standard	GPIO

Detection Distance	40-100 CM
--------------------	-----------

Connector Pin Assignment

Pin No.	Pin Name	Gesture Recognition
Pin1	3.3V	Power Supply
Pin2	Ground	Ground
Pin22	Reserved	-
Pin23	Reserved	-
Pin24	Out4	Gesture (paper)
Pin26	Out2	Gesture (scissors)



Note. Output level High (3.3V) active.

Alternative Power Supply Input (Option)

Pin No.	Pin Name	Gesture Recognition
Pin1	5V	Power Supply
Pin4	Ground	Ground

