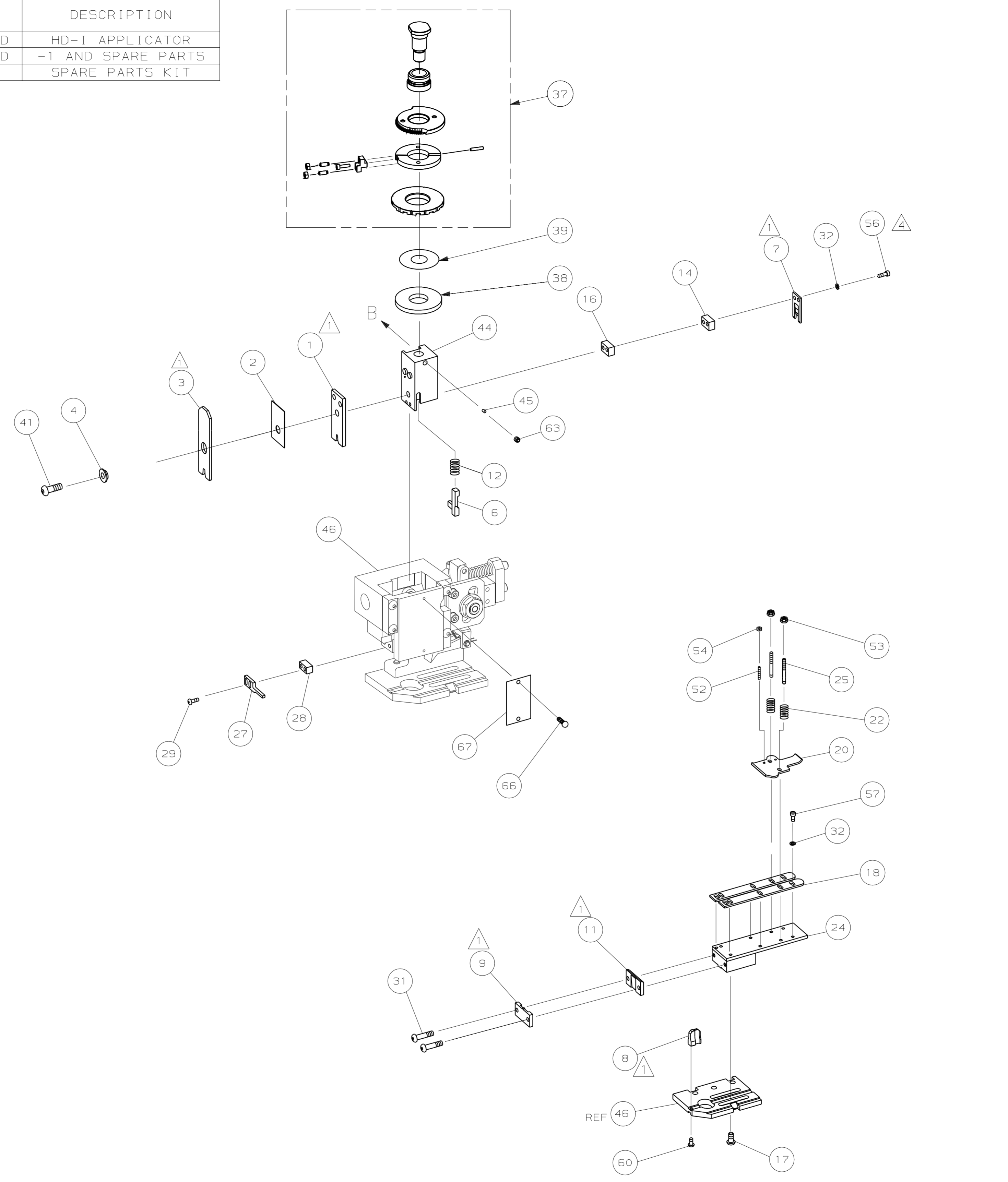
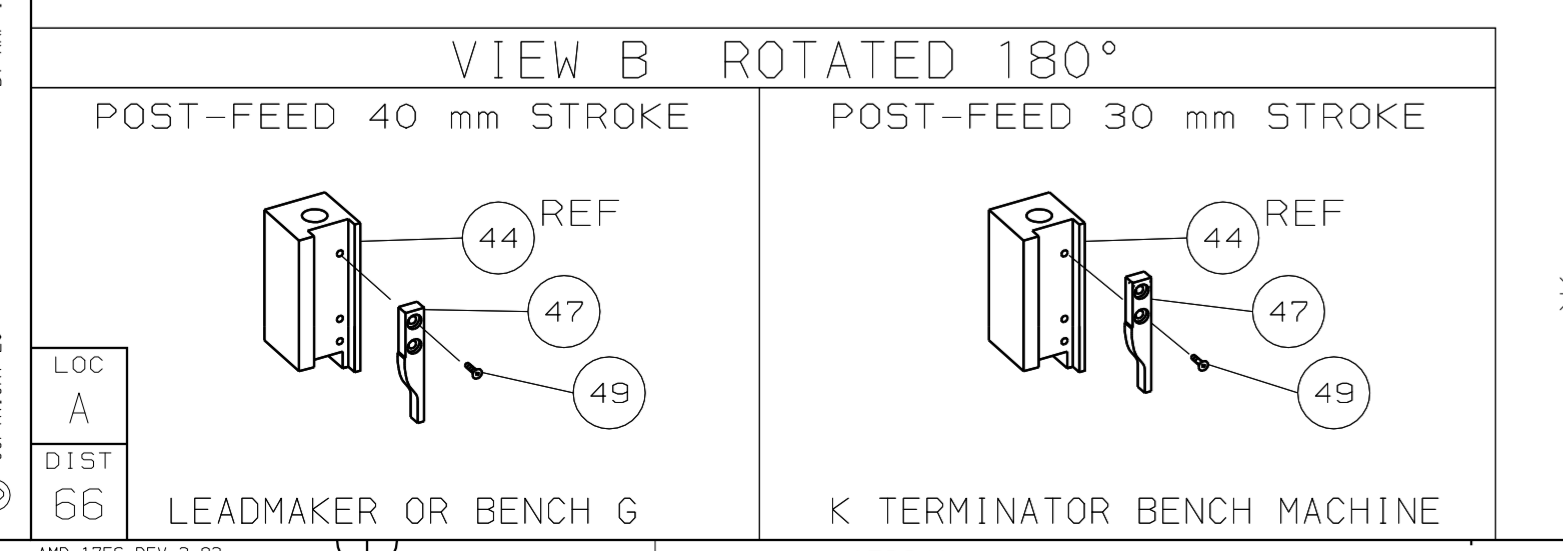


PART NUMBER	REV	FIRST USED	TERMINATOR	FEED TYPE	DESCRIPTION
1529161-1	A	-	BENCH & LEADMAKER	MECH POST FEED	HD-I APPLICATOR
7-1529161-1	A	-	BENCH & LEADMAKER	MECH POST FEED	-1 AND SPARE PARTS
7-1529161-7	A	-	-	-	SPARE PARTS KIT

CRIMP DATA AMP TERMINAL AMP CRIMP SPECS				
TERMINAL NAME: RECEPTACLE, FAST-IN-ON .187 SRS				
CRIMP	SIZE	TYPE	RANGE	
WIRE	2.79 [ .110 IN]	F	18-14 AWG	
INSUL	5.59 [ .220 IN]	F	3.30-4.83 [ .130-.190 IN]	
WIRE STRIP LENGTH		APPL INSTRUCTION		
3.58-4.34 [ .141-.171 IN]		408-8323 & 408-8490		
TERMINAL	FEED			
APPL SPEC 114-2065	16.64 [ .655 IN]			
TERMINALS APPLIED				
63833	-	-	-	-
-	-	-	-	-
-	-	-	-	-
-	-	-	-	-
-	-	-	-	-
-	-	-	-	-
-	-	-	-	-
-	-	-	-	-
-	-	-	-	-
WIRE SIZE	CRIMP HEIGHT	REF SETTING		
mm <sup>2</sup> AWG				
14 AWG	1.60 ±0.05 [ .063 ±.002 IN]	A-9		
16 AWG	1.37 ±0.05 [ .054 ±.002 IN]	C-5		
18 AWG	1.22 ±0.05 [ .048 ±.002 IN]	D-7		
-	-	-		
-	-	-		
-	-	-		
-	-	-		
-	-	-		
-	-	-		
-	-	-		
-	-	-		
-	-	-		
-	-	-		
-	-	-		
-	-	-		



- 1. RECOMMENDED SPARE PARTS.
- 2. GREASE RAM, CAM, CAM FOLLOWER AND FEED ROD LIGHTLY.
- 3. LUBRICATE DAILY PER THE APPLICATOR INSTRUCTION SHEET SUPPLIED WITH THE APPLICATOR.
- 4. CUT TO LENGTH AT ASSY.



\* WARNING:  
ON INSTALLATION, SET WIRE DISC TO LARGEST WIRE SIZE SETTING.  
USE OF SETTINGS BELOW MIN REQ'D CRIMP HEIGHT SETTING WILL CAUSE DAMAGE TO CRIMP TOOLING.

QTY	REQD	PER ASSY	PART NO	DESCRIPTION	ITEM NO
-	1	1	1529161	PRINT, APPLICATOR LOG SHEET	73
-	1	1	1338705-4	DOCUMENTATION PACKAGE	72
-	-	-	-	-	71
-	-	-	-	-	70
-	-	-	-	-	68
-	1	1	461264-5	PLATE, IDENTIFICATION	67
-	2	2	21017-2	SCR,DRIVE (#2X.19) ID PLATE	66
-	-	-	-	-	65
-	-	-	-	-	64
-	1	1	3-18031-0	SCR,SKT SET (M6X6) RAM	63
-	-	-	-	-	62
-	-	-	-	-	61
-	1	1	18024-7	SCR,BHC (M4X10) ANVIL	60
-	-	-	-	-	59
-	-	-	-	-	58
-	6	6	1-18023-0	SCR,SHC (M4X8) STRIP GUIDE	57
-	2	2	1-18023-1	SCR,SHC (M4X10) SLUG BLADE	56
-	-	-	-	-	55
-	2	2	18029-1	NUT, HEX (M3) DRAG	54
-	2	2	986965-1	NUT, HEX SL (M4) DRAG STUD	53
-	2	2	2-18032-2	SCR,SKT SET (M3X10) DRAG	52
-	-	-	-	-	51
-	-	-	-	-	50
-	1	1	18024-3	SCR,BHC (M3X10) CAM	49
-	-	-	-	-	48
-	1	1	1338676-1	CAM, POST-FEED 30 & 40 mm ST	47
-	1	1	1338662-2	APPLICATOR, BASIC (SUBASSY)	46
-	1	1	690191-1	PLUG, NYLON	45
-	1	1	1320998-1	RAM	44
-	-	-	-	-	43
-	-	-	-	-	42
-	1	1	2-18024-6	SCREW,BHC (M8X25) CRIMPER	41
-	-	-	-	-	40
-	1	1	690125-1	SHIM SUBASSY	39
-	1	1	1-469367-0	SPACER, FINE ADJUST	38
-	1	1	879103-2	FINE ADJUST HEAD SUBASSY	37
-	-	-	-	-	36
-	-	-	-	-	35
-	-	-	-	-	34
-	-	-	-	-	33
-	8	8	18025-2	WASHER, LOCK (M4) SHEAR BL	32
-	2	2	1-18024-0	SCR,BHC (M4X20) SHEAR PL	31
-	-	-	-	-	30
-	2	2	18024-8	SCR,BHC (M4X12) STRIPPER	29
-	1	1	3-690451-2	SPACER, STRIPPER	28
-	1	1	240639-1	STRIPPER	27
-	-	-	-	-	26
-	2	2	1320906-1	DRAG, STUD	25
-	1	1	1-1320995-9	PLATE, STRIP GUIDE	24
-	-	-	-	-	23
-	2	2	2-22281-6	SPRING, DRAG	22
-	-	-	-	-	21
-	1	1	1338665-1	DRAG, STOCK	20
-	-	-	-	-	19
-	2	2	1338663-5	GUIDE, LOWER STRIP	18
-	4	4	1-18024-8	SCR,BHC (M6X12) STRIP GD PL	17
-	1	1	1338708-1	SPACER, SLUG BLADE	16
-	-	-	-	-	15
-	1	1	6-240641-4	SPACER, SLUG BLADE	14
-	-	-	-	-	13
-	1	1	23846-1	SPRING, HOLD DOWN	12
-	1	1	240833-2	PLATE, REAR SHEAR	11
-	-	-	-	-	10
-	1	1	5-690482-7	PLATE, FRONT SHEAR	9
1	2	1	4-1333219-6	ANVIL	8
-	1	1	690474-6	BLADE, SLUG	7
-	1	1	1-455892-2	HOLD DOWN, TERMINAL	6
-	-	-	-	-	5
-	1	1	238009-1	SPACER, BLOCK CRIMPER	4
1	2	1	6-456134-2	CRIMPER, INSULATION	3
-	1	1	455888-5	SPACER, CRIMPER	2
1	2	1	6-456408-1	CRIMPER, WIRE	1
-	-	-	-	-	-
-	-	-	-	-	-

DIMENSIONS: mm [INCHES]		MATL	HT	TR	FIN
DO NOT SCALE PRINT.		-	-	-	-
TOLERANCES UNLESS OTHERWISE SPECIFIED:					
1. PLC DEC ±					
2. PLC DEC ±					
3. PLC DEC ±					
ANGLES ±					
SURF TEXTURE:		✓			
REMOVE BURRS, BREAK SHARP EDGES RO.38 MAX					
DR	26JUL05	APP	26JUL05		
M.CLIFFORD	F.BACKHURST				
CHK	REL				
NAME			MACHINE REF		
FINE ADJ END FD HD-I APPL			HD-I APPL		
SCALE	NO	DWG	1529161		
CAGE CODE		SHEET		REV	
00779		1 OF 1		A	

THIS DRAWING IS A CONTROLLED DOCUMENT.

LAYOUT L1529161  
SET UP GAGE 458638-3

RELEASED FOR PUBLICATION BY AMP INCORPORATED. ALL RIGHTS RESERVED.

1529161

D

C

B

A