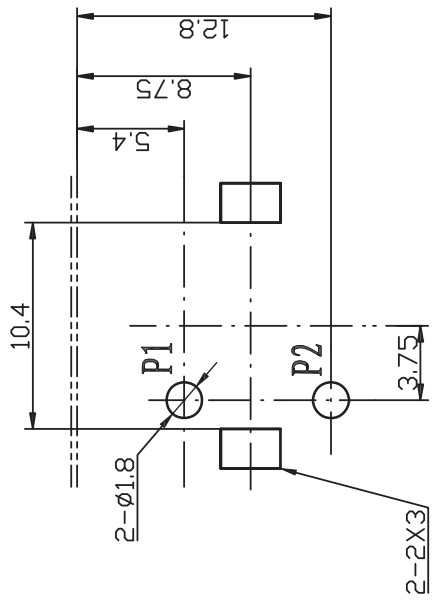


**Dimensions of PC board holes (Comment)**

**Bottom View (t=1.6mm) Ⓞ**



**ORDERING CHART:**

RH1041 X MFP G NL  
1 2 3 4 5

- 1) RH1041 = SERIES
- 2) X = INSERT/HOUSING COLOR Y=YELLOW, BL=BLUE, R=RED, OR=ORANGE W=WHITE, G=GREEN AND B=BLACK
- 3) MFP= METALIZED FACE PLATE
- 4) G= GOLD PLATED BARREL COVER
- 5) NL= ROHS COMPLIANCE

NOTE: ALL DIMS ARE IN mm.

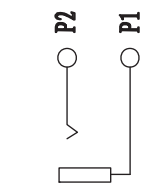
5	PINGER NEEDLE	1	H62 BRASS T=0.4	CuSn
4	BASE	1	PBT	---
3	COVER	1	ABS777D	---
2	OUTER CONDUCTOR	1	H65 BRASS T=0.4	Au
1	SHIELD PATCH	1	H62 BRASS T=0.2	CuSn
No	NAME	QTY	MATERIAL	PLATING

TECHNICAL REQUIREMENT:  
1. THIS PRODUCT MEETS EU ROHS RELATED REQUIREMENT.  
2. THE ELECTRONIC PERFORMANCE SHOULD BE THE SAME AS SPEC.  
3. THE UN-SPECIFIED TOLERANCE IS:  
( 6 ±0.2  
6-20 ±0.3  
> 20 ±0.4

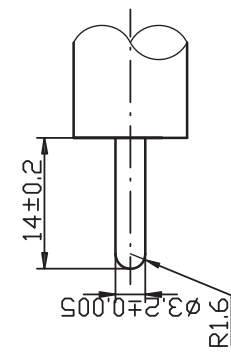
**Color layout**



**Circuit Diagram**



**Gauge Plug**



PROJECTION		TITLE	
		RCA JACK W/SHIELD/RoHS Complaint	
SCALE	N/A	DR.	DATE
TOLERANCE EXCEPT AS NOTED	N/A	Aris	11/19/10
DEC. MILLIMETERS	0~6: ±0.2 6~20: ±0.3 >20: ±0.4	CHK.	PRE-
ANG.	N/A	JK	DRAWING NO.
AUTH	BY	3999	SIZE
REVISION RECORD		F	REV.
ECN#	DATE	SYM	SHEET
			1 OF 3

**RDI** Research Develop Innovate  
RDI, Inc. 333 North Bedford Road, Suite 135, Mount Kisco, NY 10549

THIS DOCUMENT IS OWNED BY, AND THE INFORMATION CONTAINED IN IT IS PROPRIETARY TO, RDI. BY RECEIPT HEREOF THE HOLDER AGREES NOT TO USE THE INFORMATION AND NOT TO DISCLOSE IT TO ANY THIRD PARTY, NOR REPRODUCE THIS DOCUMENT WITHOUT THE WRITTEN CONSENT OF RDI, AND AGREES TO RETURN THIS DOCUMENT FORTHWITH UPON REQUEST.

1. SCOPE

THIS SPECS IS SUITABLE FOR AV PIN JACK, WHICH IS SUITABLE FOR INPUT/OUTPUT OF AUDION/VIDEO SIGNAL, USED AS CONNECTION PART.

2. CONSTRUCTION

THE EXTERNAL DIMENSIONS OF THIS PRODUCT AND ITS INTERNAL TOLERANCES ARE BASED ON RELEVANT DRAWINGS.

3. MATERIAL

REFER TO THE MATERIAL FILM-PROCESSING THE DRAWING SPECIFIES

4. APPLIED ENVIRONMENT

- (1) TEMPERATURE: -40~70°C
- (2) RELATIVE HUMIDITY: <90%~-95%(55°C±2°C)

5. ELECTRICAL PROPERTIES

No.	ITEMS	TECHNICAL CONDITIONS	TECHNICAL REQUIREMENTS
5.1	RATING LOAD	DC 12V	1A
5.2	DIELECTRIC STRENGTH	AC 500V(50Hz) 1 MIN 2mA	NO ABNORMALITY, NO BREAKDOWN, NO OVER ARC.
5.3	CONTACT RESISTANCE	FREQUENCY: 1000Hz; CURRENT <100mA VOLTAGE: 20mV	≤20mOHM
5.4	INSULATION RESISTANCE	APPLY DC 500V BETWEEN PIN AND OUT CONDUCTOR AND TEST IT ATTER 1 MIN	≥100MOHM

6. MECHANICAL PROPERTIES

No.	ITEMS	TECHNICAL CONDITIONS	TECHNICAL REQUIREMENTS
6.1	INSERTION FORCE	USE STANDARD PLUG.MEASURE IT AFTER 3 TIMES OF INSERTION	3~25N
	EXTRACTION FORCE	USE STANDARD PLUG.MEASURE IT AFTER 3 TIMES OF EXTRACTION	3~25N
6.2	TERMINAL STRENGTH	PULL THE TERMINAL WITH 20 N FORCE IN AXES DIRECTION FOR 1 MINUTE. THE JACK WILL NOT BE BROKEN OR DAMAGED.	APPEARANCE: NO DEFORMING AND LOOSING
			CONTACT RESISTANCE: ≤30mOHM INSULATION RESISTANCE: ≥100MOHM VOLTAGE WITHSTANDING: AC500V,2mA,1MIN,NO BREAKDOWN,NO OVER ARC.

No.	ITEMS	TECHNICAL CONDITIONS	TECHNICAL REQUIREMENTS
6.3	MECHANICAL LIFE	INSERTING AND EXTRACTING 1000 TIMES WITHOUT LOAD AT THE SPEED OF 10~20 CYCLES PER MINUTE.	APPEARANCE: NO DEFORMING AND LOOSING CONTACT RESISTANCE: ≤30mOHM INSULATION RESISTANCE: ≥100MOHM VOLTAGE WITHSTANDING: AC500V,2mA,1MIN,NO BREAKDOWN,NO OVER ARC. INSERTION FORCE: ≤3~25N EXTRACTION FORCE: 3~25N
6.4	STRENGTH OF TAPPING PANT	THE TAPPING PART SHALL BE CAPABLE OF TORQUE OF 1 N.m FOR 10 SECONDS BY M3X8 TAPPING SCREW AND PANEL(TL)	WITHOUT LOOSING AND BREAKDOWN ETC.ELECTRICAL CHARACTERIATICS SHALL BE SATISFIED.


7. SOLDERING PROPERTIES

No.	ITEMS	TECHNICAL CONDITIONS	TECHNICAL REQUIREMENTS
7.1	SOLDER-ABILITY	SOLDER BATH METHOD: TEMPERATURE: 230°C ± 5 °C FLUX DIPPING TIME 3± 0.5s SECONDS	SOLDER COVERED SURFACE >90%
7.2	SOLDERING WITHSTANDING	SOLDER BATH METHOD: TEMPERATURE: 260± 5 °C FLUX DIPPING TIME : 5± 1s	APPEARANCE: TERMINAL NO LOOSING CONTACT RESISTANCE: ≤50mOHM INSULATION RESISTANCE: ≥100MOHM VOLTAGE WITHSTANDING: AC500V,2mA,1MIN,NO BREAKDOWN,NO OVER ARC. INSERTION FORCE: 3~25N EXTRACTION FORCE: 3~25N

PROJECTION



SCALE	N/A
TOLERANCE EXCEPT AS NOTED	N/A
DEC. MILLIMETERS	N/A
DEC. INCHES	N/A
ANG.	N/A



**RDI** Research Develop Innovate

RDI, Inc. 333 North Bedford Road, Suite 135, Mount Kisco, NY 10549

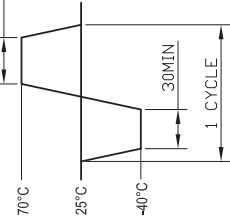
TITLE		RCA JACK W/SHIELD/RoHS Complaint	
DR.	DATE	REF.	SHEET
Aris	11/19/10		2 OF 3
CK.	PRE-	DRAWING NO.	SIZE
Greg	JK	3999	F

THIS DOCUMENT IS OWNED BY AND THE INFORMATION CONTAINED IN IT IS PROPRIETARY TO RDI. BY RECEIPT HEREOF THE HOLDER AGREES NOT TO USE THE INFORMATION AND NOT TO DISCLOSE IT TO ANY THIRD PARTY. NOR REPRODUCE THIS DOCUMENT WITHOUT THE WRITTEN CONSENT OF RDI. AND AGREES TO RETURN THIS DOCUMENT FORTHWITH UPON REQUEST.



ECN#	DATE	SYM	REVISION RECORD	AUTH	BY

8. ENVIRONMENT PROPERTIES

No.	ITEMS	TECHNICAL CONDITIONS	TECHNICAL REQUIREMENTS
8.1	HEAT WITHSTANDING	TEMPERATURE: 70± 2°C, KEEP 96 HOURS AND MEASURE AFTER ONE HOUR RECOVERY IN STANDARD ATMOSPHERIC CONDITIONS	APPEARANCE: NO DEFORMING AND LOOSING CONTACT RESISTANCE: ≤50mOHM INSULATION RESISTANCE: ≥ 100MOHM VOLTAGE WITHSTANDING: AC500V,2mA,1MIN,NO BREAKDOWN,NO OVER ARC. INSERTION FORCE: 3-25N EXTRACTION FORCE: 3-25N
8.2	HUMIDITY WITHSTANDING	TEMPERATURE: 40 ± 2°C, RELATIVE HUMIDITY: 90-95% TIME: 96HOURS MEASURE AFTER ONE HOUR RECOVERY IN STANDARD ATMOSPHERIC CONDITIONS	APPEARANCE: NO DEFORMING AND LOOSING CONTACT RESISTANCE: ≤50mOHM INSULATION RESISTANCE: ≥ 10MOHM VOLTAGE WITHSTANDING: AC500V,2mA,1MIN,NO BREAKDOWN,NO OVER ARC. INSERTION FORCE: 3-25N EXTRACTION FORCE: 3-25N
8.3	COLD WITHSTANDING	TEMPERATURE:-40±3°C, TIME:96HOURS MEASURE AFTER ONE HOUR RECOVERY IN STANDARD ATMOSPHERIC CONDITIONS.	APPEARANCE: NO DEFORMING AND LOOSING CONTACT RESISTANCE: ≤50mOHM INSULATION RESISTANCE: ≥ 10MOHM VOLTAGE WITHSTANDING: AC500V,2mA,1MIN,NO BREAKDOWN,NO OVER ARC. INSERTION FORCE: 3-25N EXTRACTION FORCE: 3-25N

No.	ITEMS	TECHNICAL CONDITIONS	TECHNICAL REQUIREMENTS
8.4	TEMPERATURE CYCLE	DECREASE FROM 25°C TO -40°C IN 30 MINUTES; THEN INCREASE FROM -40°C TO 70°C TO COMPLETE ONE CYCLE. TOTAL 5 CYCLES. MEASURE AFTER 24 HOURS OF RECOVERY IN STANDARD ATMOSPHERIC CONDITIONS 	APPEARANCE: NO DEFORMING AND LOOSING CONTACT RESISTANCE: ≤50mOHM INSULATION RESISTANCE: ≥ 100MOHM VOLTAGE WITHSTANDING: AC500V,2mA,1MIN,NO BREAKDOWN,NO OVER ARC. INSERTION FORCE: 3-25N EXTRACTION FORCE: 3-25N APPARANCE:HIGH-LOW TEMPERATURE TESTING CHAMBER

9. THIS PRODUCT SHOULD MEET EU RoHS RELATED REQUIREMENT.

 Research Develop Innovate	
RDI, Inc. 333 North Bedford Road, Suite 135, Mount Kisco, NY 10549	
PROJECTION 	TITLE RCA JACK W/SHIELD/RoHS Complaint
SCALE N/A	DR. DATE Aris 11/19/10
TOLERANCE EXCEPT AS NOTED N/A	REF. PART NO. RH1041-X-MFP-G-NL 3 OF 3
DEC. MILLIMETERS N/A	PRE- DRAWING NO. SIZE JK 3999 F
DEC. INCHES N/A	REV.
ANG. N/A	SHEET

ECN#	DATE	SYM	AUTH	BY	REVISION RECORD