

SPECIFICATIONS SHEET

PRODUCT TYPE : MECHANICAL BUZZER

PRODUCT SERIES : BS2316P-C-B

DESCRIPTION : MC BUZZER SINGLE 12VDC PIN ABS

COLOR : GRAY

ELECTRICAL SPECIFICATIONS

MODEL NO.	<i>BS2316P-12-C-B</i>	
OPERATING VOLTAGE RANGE (VDC)	8.0 ~ 16.0	
RATED VOLTAGE (VDC)	12.0	
* MAX. RATED CURRENT (mA)	20.0	
MIN. TRIGGER CURRENT (mA)	5.0	
* MIN. SOUND OUTPUT (dBA/ 30 cm)	70.0	
* FREQUENCY (Hz)	400 ± 100	
TONE NATURE	SINGLE	
OPERATING TEMPERATURE (°C)	- 20.0 ~ + 70.0	
STORAGE TEMPERATURE (°C)	- 30.0 ~ + 75.0	
TERMINAL	PIN	
HOUSING MATERIAL	ABS	
WEIGHT (g)	10.0	

* Value applying at rated voltage

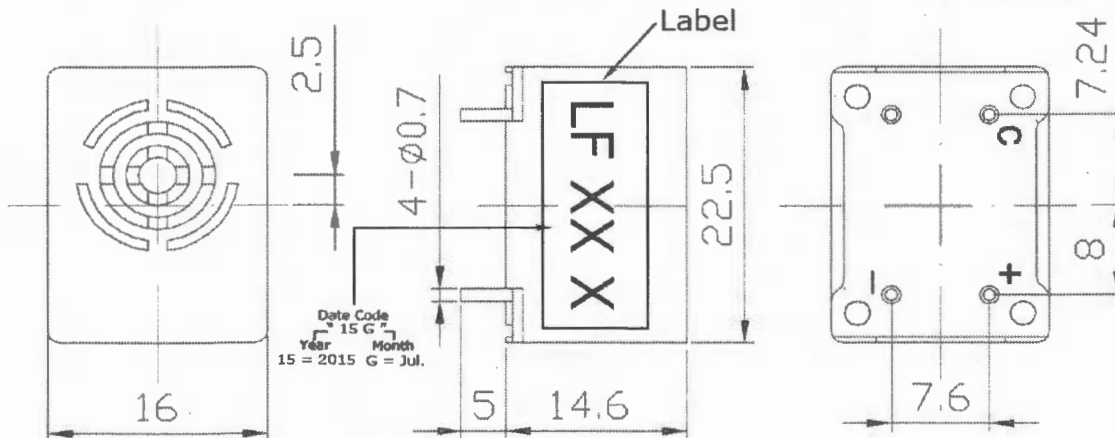
DIMENSIONS

UNIT : mm Tolerance : ± 0.5 mm

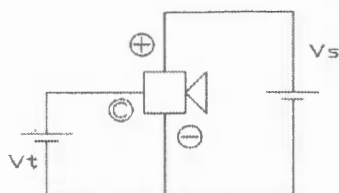
TOP VIEW

SIDE VIEW

BOTTOM VIEW



Coupled Circuit



Characteristics

Modify :	Date :	By :

Approved By : FG
 Date : 23-Jul.-2015

Prepared By : LL
 Date : 23-Jul.-2015