

## 24-32GHz 4-way Wilkinson Power Divider

**PDW07069**

### DESCRIPTION

DLI's 24-32GHz 4-way power divider / combiner offers unmatched size and performance in a surface mount configuration. This power divider utilizes DLI's low loss temperature stable materials which offer small size and minimal performance variation over temperature.

### FEATURES

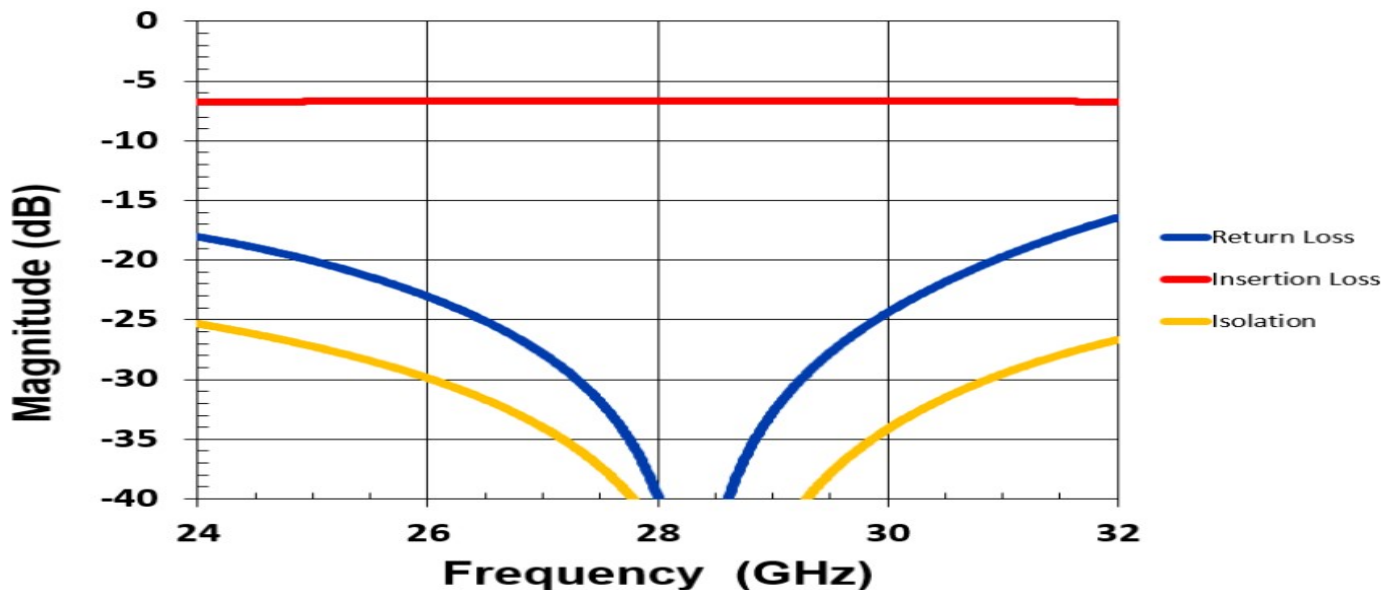
- Small Size
- Frequency Stable over Temperature
- Solder Surface Mount Package
- Excellent Repeatability
- Moisture Sensitivity Level: MSL1
- Operating & Storage Temp: -55°C to +125°C
- Characteristic Impedance: 50Ω

### SPECIFICATIONS\*

Parameter	Frequency Range (GHz)	Min	Typ.	Max	
Nominal Power Splitting (dB)	24-32		6.0		
Nominal Phase Shift (Deg)			0.0		
Amplitude Balance (dB)					± .5
Phase Balance (Deg)					± 6.0
Excess Insertion Loss (dB)					1
Return Loss (dB)			10	14	
Isolation (dB)			10	14	
Input Power (W) <sup>1</sup>					TBD

\*Electrical specifications based on typical probed performance at room temperature. Insertion loss shall vary ±0.5dB over temperature.

### Typical Measured Performance



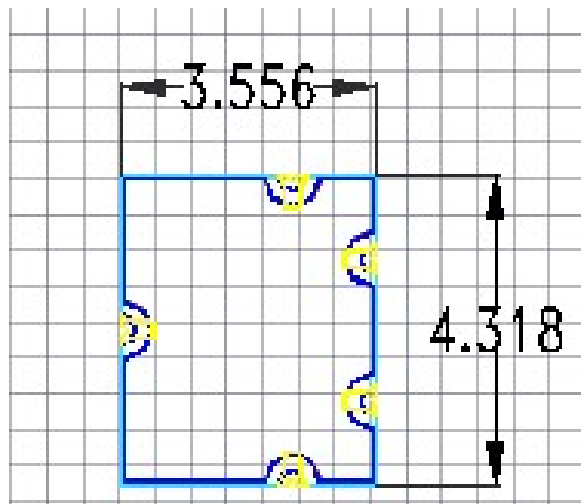
**24-32GHz 4-way Wilkinson Power Divider**

**PDW07069**

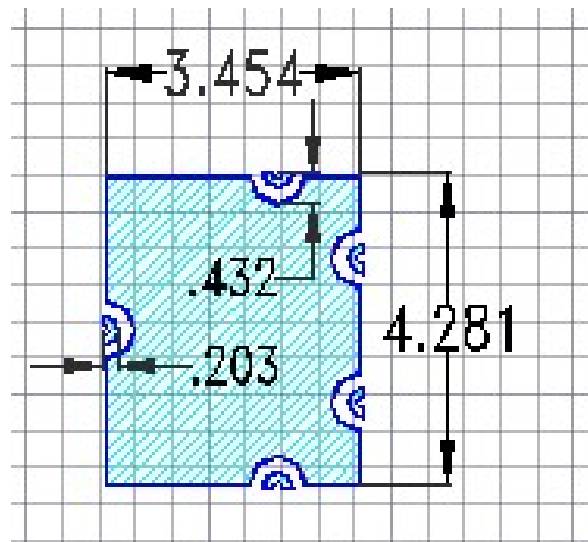
**Physical Dimensions**

Units = mm

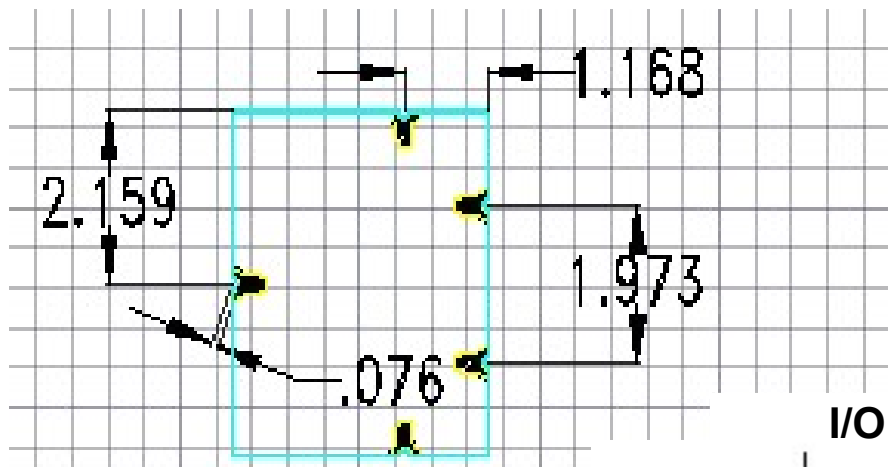
**Top View**



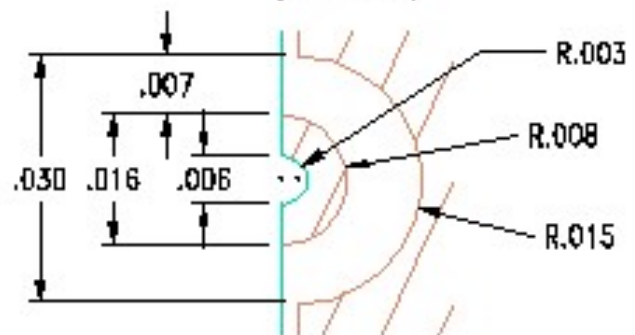
**Bottom View**



**Top View Details**



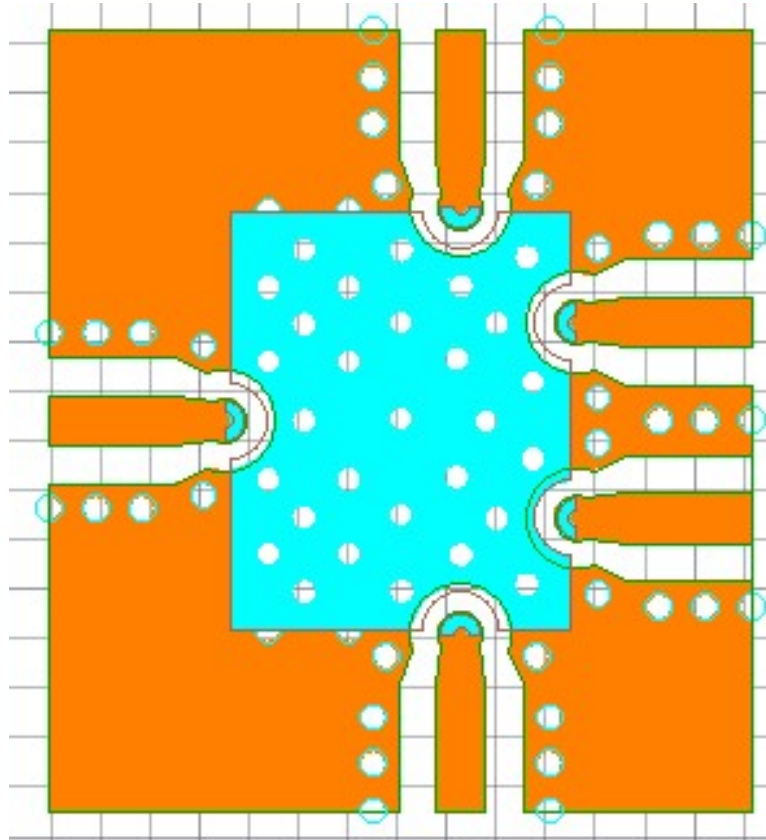
**I/O Detail (inches)**



## 24-32GHz 4-way Wilkinson Power Divider

**PDW07069**

### Recommended PCB Layout



#### Recommended PCB board :

10.0 mil Roger Board RO4350B

50Ω GCPW traces are used to carry RF signals into the port

Ensure adequate grounding beneath the part.

