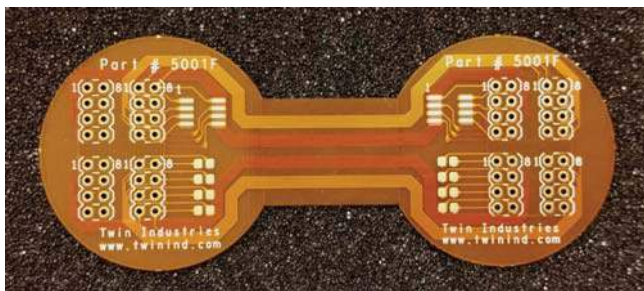




Twin Industries flexible prototyping boards have the latest flexible printed circuit board materials. Manufactured with Polyimide material with FR4 stiffeners, they are ideal for prototypes, flex circuit process testing, and adapting rigid boards to flex/rigid printed circuit boards. Custom designs, materials, lengths, and quantities are available.

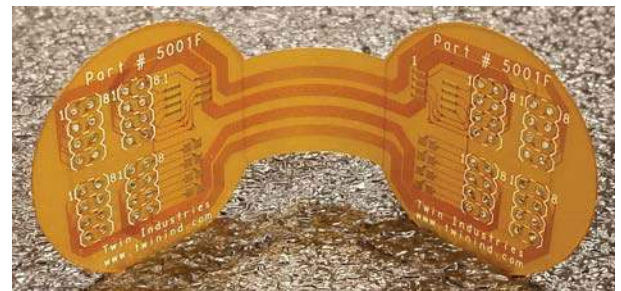
FEATURES:

- 32 plated holes per side connected by dedicated traces to 32 holes on opposing side
- SMT pads for capacitors, resistors, or other components
- Designed for wearable product development
- Connect rigid and/or solderless boards



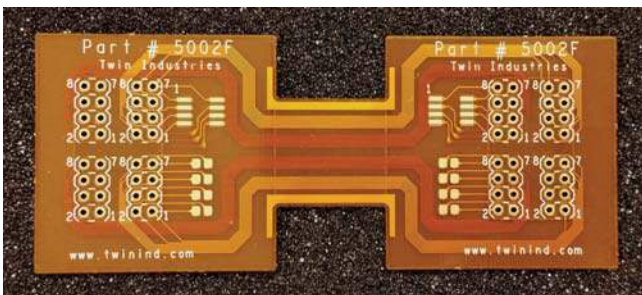
Part Number 5001F

Dim: 3.7" x 1.5" x .005" thick(flex area) to .023" (flex/stiffener)



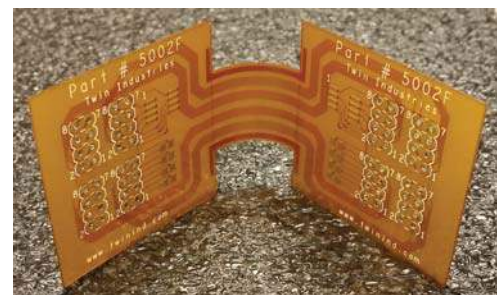
Part Number 5001F

Flex View



Part Number 5002F

Dim: 3.7" x 1.5" x .005" thick(flex area) to .023" (flex/stiffener)



Part Number 5002F

Flex View

Sample assembly; Part#8000-45-LF (rigid), 5001F (flex), OB1-LF (solderless)

