

REFERENCE SPECIFICATIONS

-NFC 93425 (in compliance with HE 507)

PHYSICAL CHARACTERISTICS

- INSULATOR MATERIAL: THERMOPLASTIC UL94V0
- CONTACT MATERIAL: BRASS(SIGNAL CONTACT)
BRASS (POWERS CONTACT)
- ACCESSORIES: BRASS
- SHELLS: STEEL

ELECTRICAL CHARACTERISTICS

- NOMINAL CURRENT: 7.5A (SIGNAL CONTACT)
30A (POWER CONTACT)
- CONTACT RESISTANCE: <=7.3 m Ohms(SIGNAL and POWER)
- CONTACT/CONTACT : >=1000 V
- CONTACT/GROUND : >=1200 V
- INSULATION RESISTANCE: >=5000 MOhms

ENVIRONMENTAL CHARACTERISTICS

- CLIMATIC CATEGORY: 55/125/21
TEMPERATURE RANGE -55°C TO +125°C
DAMP HEAT STEADY STATE 21 DAYS
SALT SPRAY 24 HOURS

MECHANICAL CHARACTERISTICS

- RETENTION AGAINST TORQUE: - Threaded insert: 0.7 N.m maximum
- Female screw : 0.5 N.m maximum

NOTE RoHS INFORMATION

- The "LF" products meet european union Directives and other country regulations as described in GS-47-0004.
- The housing will withstand exposure to 260°C peak temperature for 3.5 seconds in a wave solder application with a 1.6mm minimum thick circuit board. See application notes/procedures if they are available.
- Termination plating spec:
 - Signal contacts: Ni + Gold/GxT
 - Power contacts: Ni 1.27µmi+Sn 2.5 to 7.5µ,pure bright
- Active area plating spec:
 - Signal and power contacts: Ni + Gold/GxT
- Shell plating :2 to 4µm Cu + Ni + 3 to 10µmm Sn,pure bright
- Accessories: Sn pure bright + Nickel
- Packaging spec: See GS-14-920

DBL13W3P700G30LF

Series

Shell size: **A B C**
see sheet 3

Front accessory definition
see sheet 2

- blank** :without accessory
- L** :threaded insert M3
- O** :threaded insert UNC 4-40
- V** :female screw UNC 4-40

Layout of contacts (see sheets)

Contacts

P :Pin

Termination type

7 Right angle/USA

Plating

- 00** 200 matings/unmatings
- 43** 500 matings/unmatings

PCB accessories definition
see sheet 2

- A** :without accessory
- H** :Metal brackets+harpoons for PCB 2.40mm
- G** :Metal brackets+harpoons for PCB 1.60mm
- M** :Metal brackets

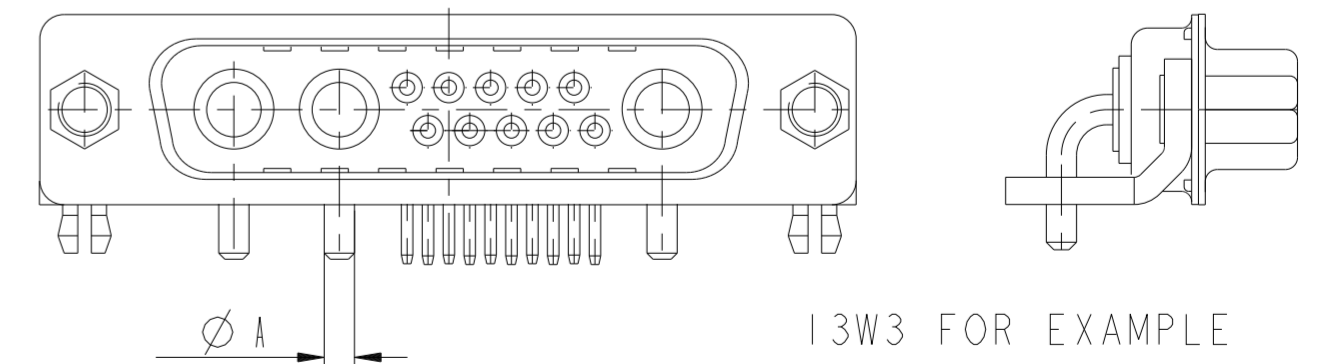
Power contacts

30 :Fitted with power contacts 30 Amp.

See note RoHS

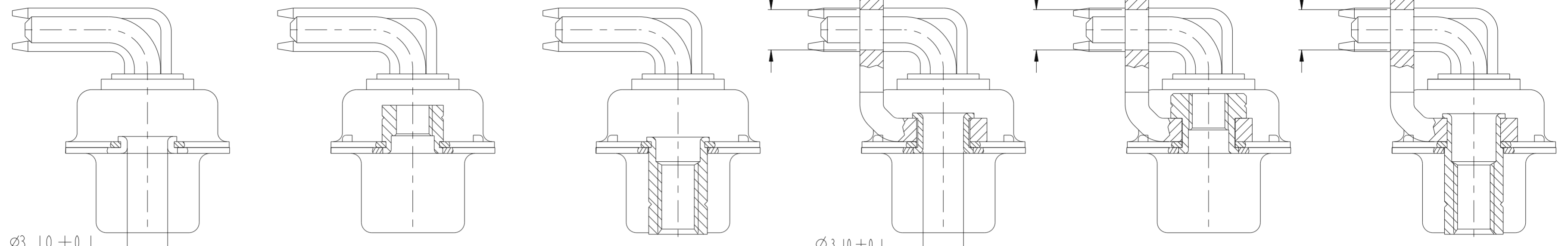
TABLE 1:PCB HOLE DIAMETERS

POWER CONTACTS			ACCESSORIES	SIGNAL CONTACTS
30 A	2.00	Ø2.40	Ø3.10	Ø0.90 min
Max current power	ØA±0.1	PCB HOLE +/-0.1	PCB HOLE +/-0.1	PCB HOLE +/-0.1

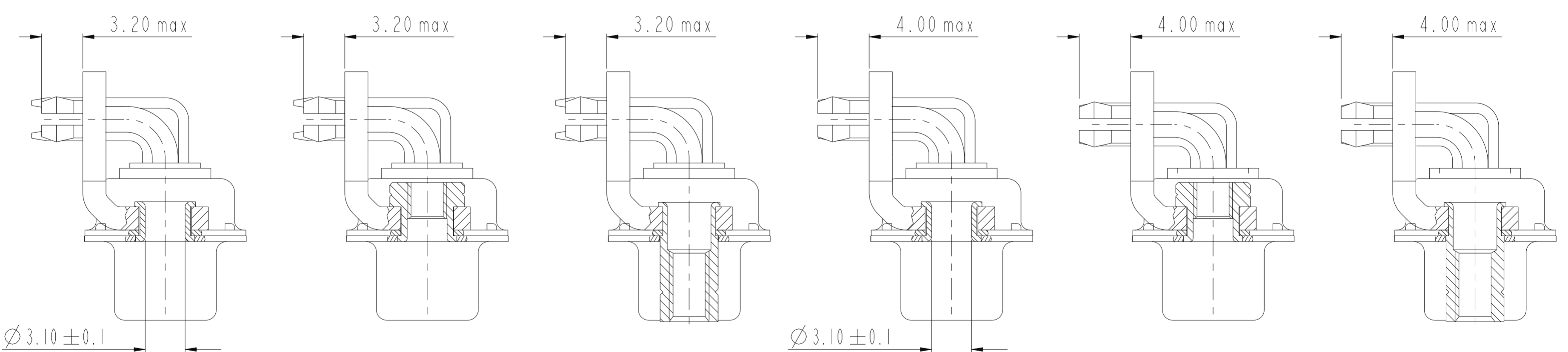


spec ref	dr	1, Product Eng	2015/06/13	projection	mm	size	A2	scale	1:1	
tolerance std	eng	Gregar Mathew	2019/11/09			ecn no	ELX-33023-1	rel level	Released	
ISO 406	chr	-								
ISO 1101	appr	Varma Sudhir	2019/11/12							
surface	linear	Amphenol FCI		product family	-	title	SUB MALE DW US FOOT PRINT		rev	E
ISO 1302	angular	0°	±22°	cat. no.	-	part no	C01-8639-2305c	Product - Customer Drw	sheet 1 of 6	

Amphenol FCI



FRONT ACCESSORY	Blank Without	L insert M3 O insert UNC 4.40	V insert UNC 4.40	Blank Without	L insert M3 O insert UNC 4.40	V insert UNC 4.40
PCB ACCESSORIES	A Without	A Without	A Without	M Metal brackets	M Metal brackets	M Metal bracket



FRONT ACCESSORY	Blank Without	L insert M3 O insert UNC 4.40	V insert UNC 4.40	Blank Without	L insert M3 O insert UNC 4.40	V insert UNC 4.40
PCB ACCESSORIES	G Metal brackets + harpoons for PCB 1.60mm	G Metal brackets + harpoons for PCB 1.60mm	G Metal brackets + harpoons for PCB 1.60mm	H Metal brackets + harpoons for PCB 2.40mm	H Metal brackets + harpoons for PCB 2.40mm	H Metal brackets + harpoons for PCB 2.40mm

spec ref	dr	1, Product Eng	2015/06/13	projection	mm	size	A2	scale	2:1
tolerance std	eng	Gregar Mathew	2019/11/09			ecn no	ELX-433023-1		
ISO 406 ISO 1101	chr	-	-			rel level	Released		
surface	linear	0.X	±0.30		TITLE SUB MALE DW US FOOT PRINT MIXED POWER RIGHT ANGLE SOLDER	cat. no. -	Product - Customer Drw	sheet 2 of 6	rev E
		0.XX	±0.10						
		0.XXX	±0.05						
ISO 1302	angular	0°	±2°	Product - Customer Drw	C01-8639-2305c	sheet 2 of 6	rev E		

A
B
C
D
E
F

PART NUMBER	AMPS	MATINGS/ UNMATINGS	FRONT ACCESSORY	PCB ACCESSORIES
D*xWxP700A30LF	30	200	without	without
D*LxWxP700A30LF	30	200	insert M3	without
D*OxWxP700A30LF	30	200	insert UNC 4.40	without
D*VxWxP700A30LF	30	200	female screw UNC 4.40	without
D*xWxP700H30LF	30	200	without	metal bracket+harpoon PCB 2.40mm
D*LxWxP700H30LF	30	200	insert M3	metal bracket+harpoon PCB 2.40mm
D*OxWxP700H30LF	30	200	insert UNC 4.40	metal bracket+harpoon PCB 2.40mm
D*VxWxP700H30LF	30	200	female screw UNC 4.40	metal bracket+harpoon PCB 2.40mm
D*xWxP700G30LF	30	200	without	metal bracket+harpoon PCB 1.60mm
D*LxWxP700G30LF	30	200	insert M3	metal bracket+harpoon PCB 1.60mm
D*OxWxP700G30LF	30	200	insert UNC 4.40	metal bracket+harpoon PCB 1.60mm
D*VxWxP700G30LF	30	200	female screw UNC 4.40	metal bracket+harpoon PCB 1.60mm
D*xWxP700M30LF	30	200	without	metal bracket
D*LxWxP700M30LF	30	200	insert M3	metal bracket
D*OxWxP700M30LF	30	200	insert UNC 4.40	metal bracket
D*VxWxP700M30LF	30	200	female screw UNC 4.40	metal bracket

shell size *
A
A
B
B
B
C
C
C

LAYOUTS
xWx

11W1
7W2
21W1
17W2
13W3
25W3
21WA4
27W2

PART NUMBER	AMPS	MATINGS/ UNMATINGS	FRONT ACCESSORY	PCB ACCESSORIES
D*xWxP743A30LF	30	500	without	without
D*LxWxP743A30LF	30	500	insert M3	without
D*OxWxP743A30LF	30	500	insert UNC 4.40	without
D*VxWxP743A30LF	30	500	female screw UNC 4.40	without
D*xWxP743H30LF	30	500	without	metal bracket+harpoon PCB 2.40mm
D*LxWxP743H30LF	30	500	insert M3	metal bracket+harpoon PCB 2.40mm
D*OxWxP743H30LF	30	500	insert UNC 4.40	metal bracket+harpoon PCB 2.40mm
D*VxWxP743H30LF	30	500	female screw UNC 4.40	metal bracket+harpoon PCB 2.40mm
D*xWxP743G30LF	30	500	without	metal bracket+harpoon PCB 1.60mm
D*LxWxP743G30LF	30	500	insert M3	metal bracket+harpoon PCB 1.60mm
D*OxWxP743G30LF	30	500	insert UNC 4.40	metal bracket+harpoon PCB 1.60mm
D*VxWxP743G30LF	30	500	female screw UNC 4.40	metal bracket+harpoon PCB 1.60mm
D*xWxP743M30LF	30	500	without	metal bracket
D*LxWxP743M30LF	30	500	insert M3	metal bracket
D*OxWxP743M30LF	30	500	insert UNC 4.40	metal bracket
D*VxWxP743M30LF	30	500	female screw UNC 4.40	metal bracket

Amphenol
FCi

spec ref	dr	1, Product Eng	2015/06/13	projection	mm	size	A2	scale	2:1
tolerance std	eng	Gregar Mathew	2019/11/09		mm	ecn no	ELX-33023-1	rel level	Released
ISO 406	chr	-							
ISO 1101	appr	Varma Sudhir	2019/11/12						
TOLERANCES UNLESS OTHERWISE SPECIFIED		product family		SUB MALE DW US FOOT PRINT		C01-8639-2305c		rev	
surface	linear	0.X	±0.30	MIXED POWER RIGHT ANGLE SOLDER				E	
		0.XX	±0.10						
		0.XXX	±0.05						
ISO 1302	angular	0°	±2°						
cat. no.				Product - Customer Drw		sheet 3 of 6			

© 2016 AFci

11W1

LAYOUT AND CONNECTOR DIMENSIONS

For PCB hole diameters see table 1 sheet 1

7W2

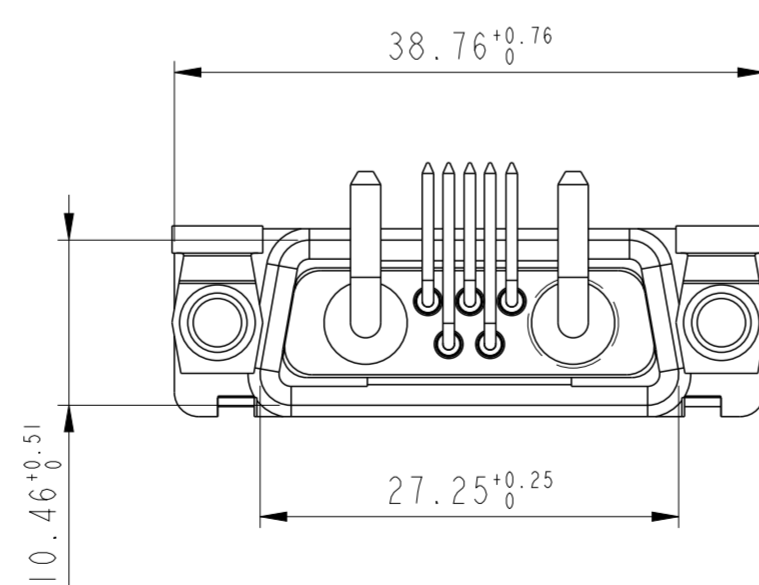
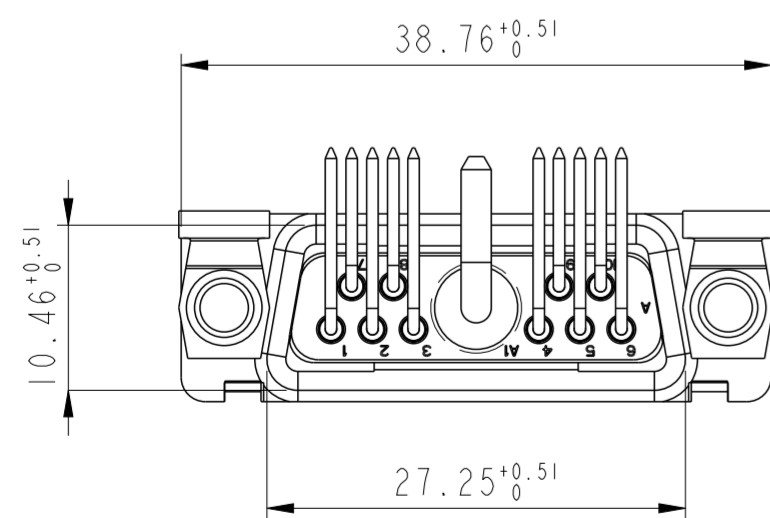
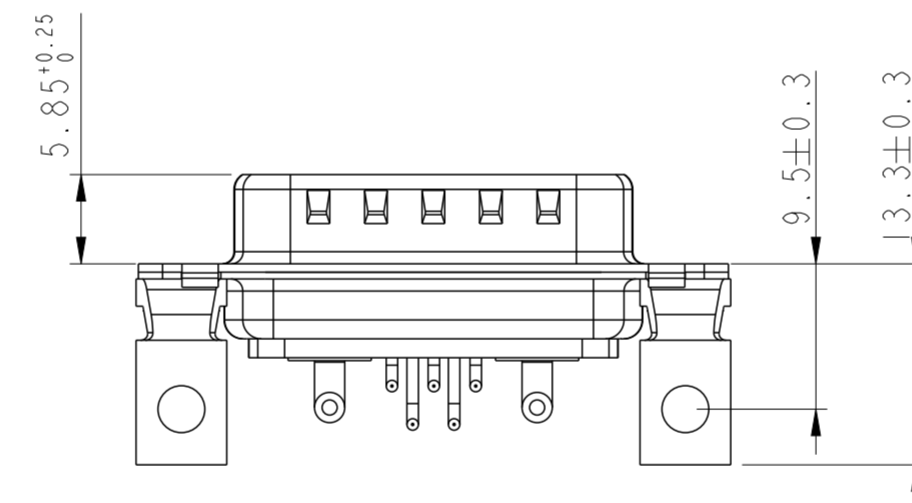
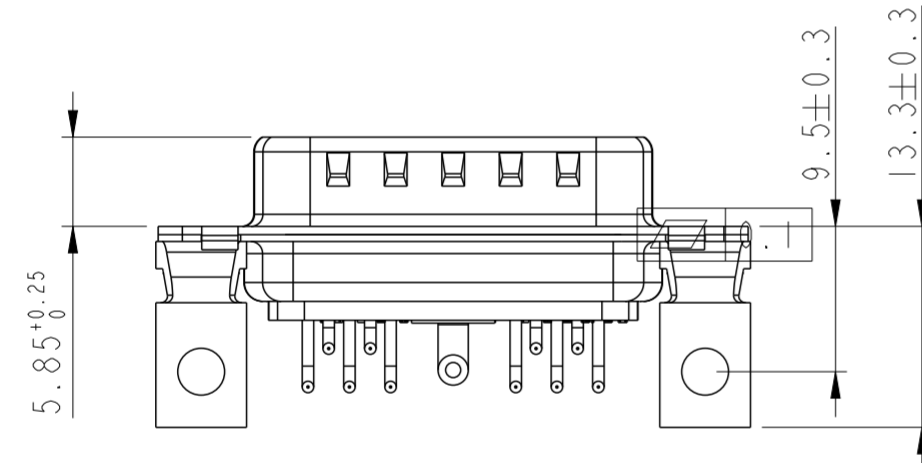
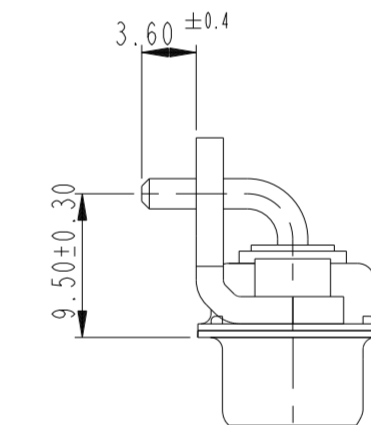
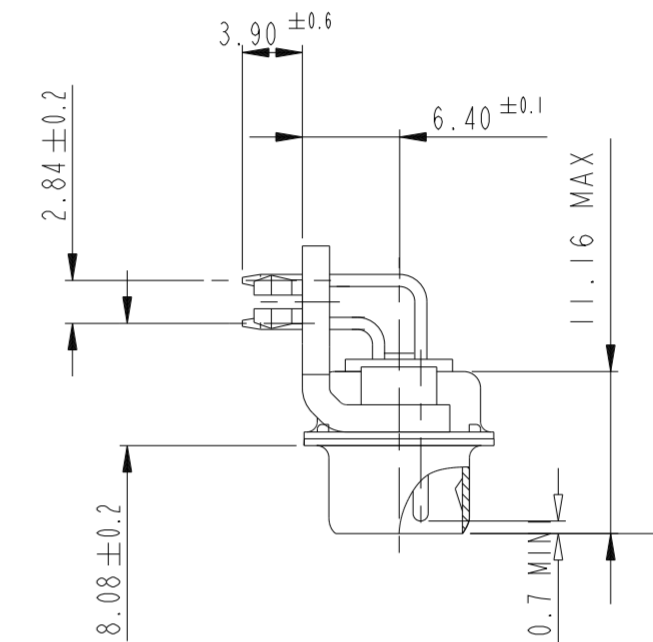
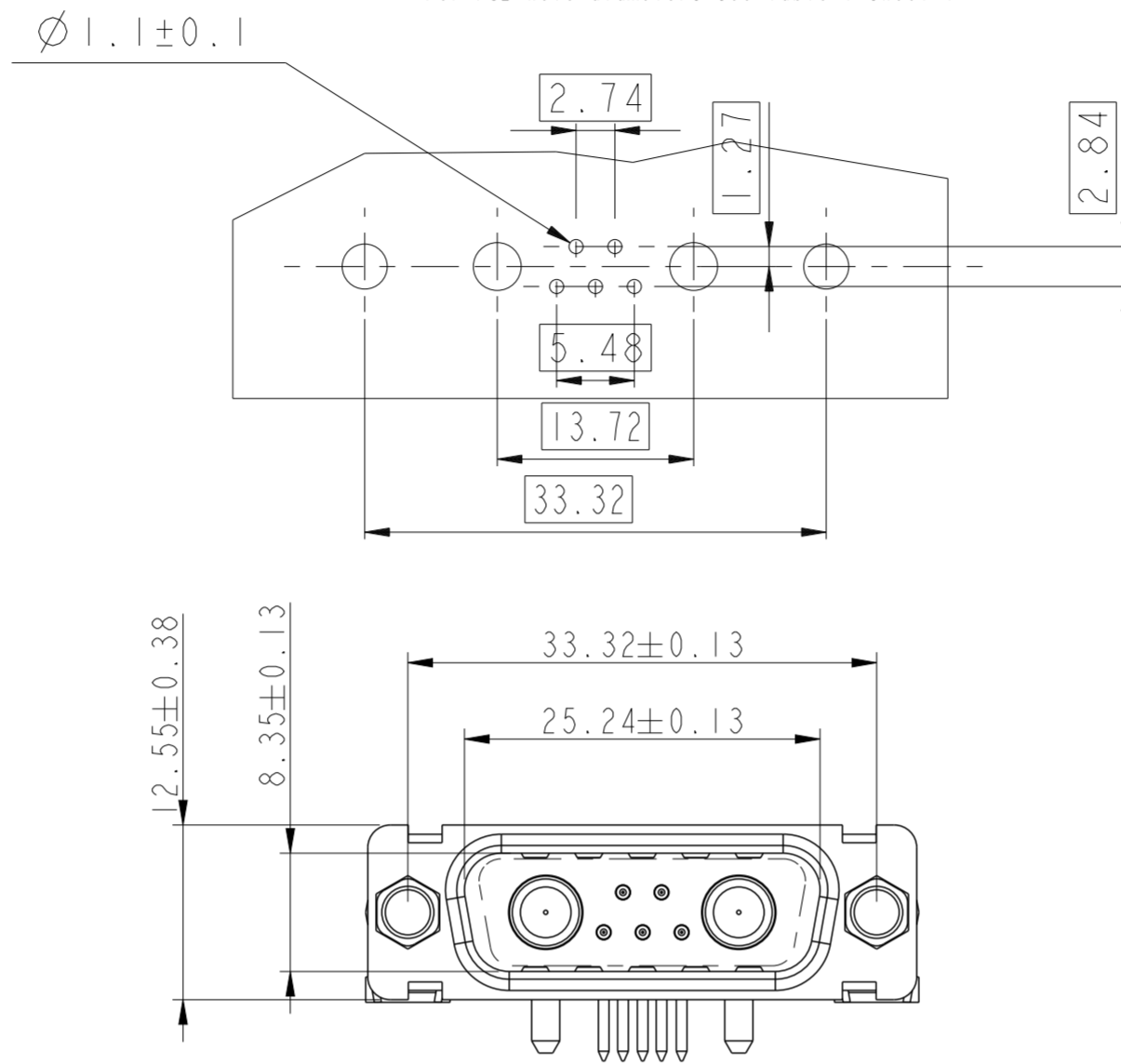
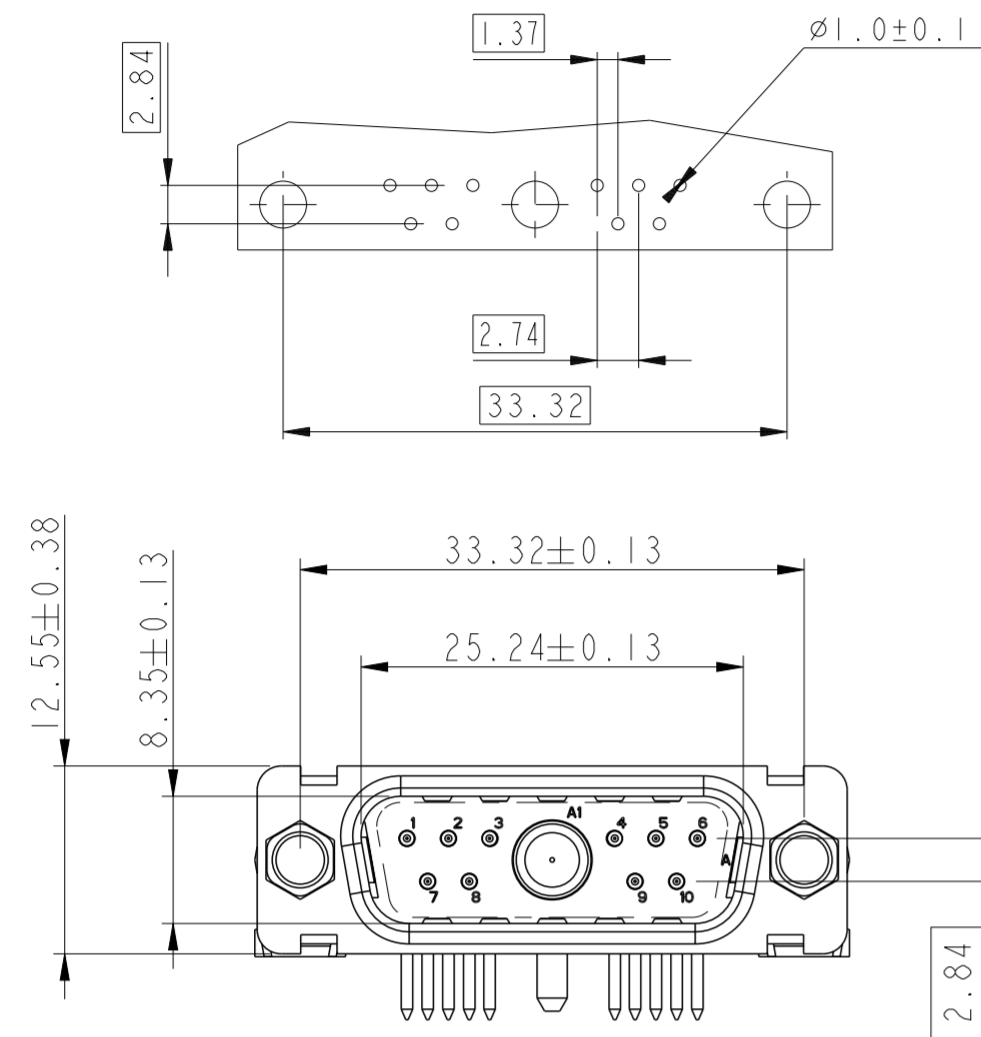
LAYOUT AND CONNECTOR DIMENSIONS

For PCB hole diameters see table 1 sheet 1

SIDE VIEW FOR ALL LAYOUTS

VIEW WITHOUT POWERS CONTACTS

VIEW WITH POWERS CONTACTS



spec ref	dr	1, Product Eng	2015/06/13	projection	mm	size	A2	scale	2:1
tolerance std	eng	Gregar Mathew	2019/11/09		mm	ecn no	ELX-433023-1	rel level	Released
ISO 406	chr	-	-						
ISO 1101	appr	Varma Sudhir	2019/11/12	product family	-	rel level	Released		
surface	linear	0.X	±0.30	Amphenol FCI	SUB MALE DW US FOOT PRINT MIXED POWER RIGHT ANGLE SOLDER	dwg no C01-8639-2305c	rev E	Product - Customer Drw	
		0.XX	±0.10					sheet 4 of 6	
		0.XXX	±0.05						
ISO 1302	angular	0°	±2°	cat. no.	-				

13W3

LAYOUT AND CONNECTOR DIMENSIONS

For PCB hole diameters see table I sheet 1

21W1

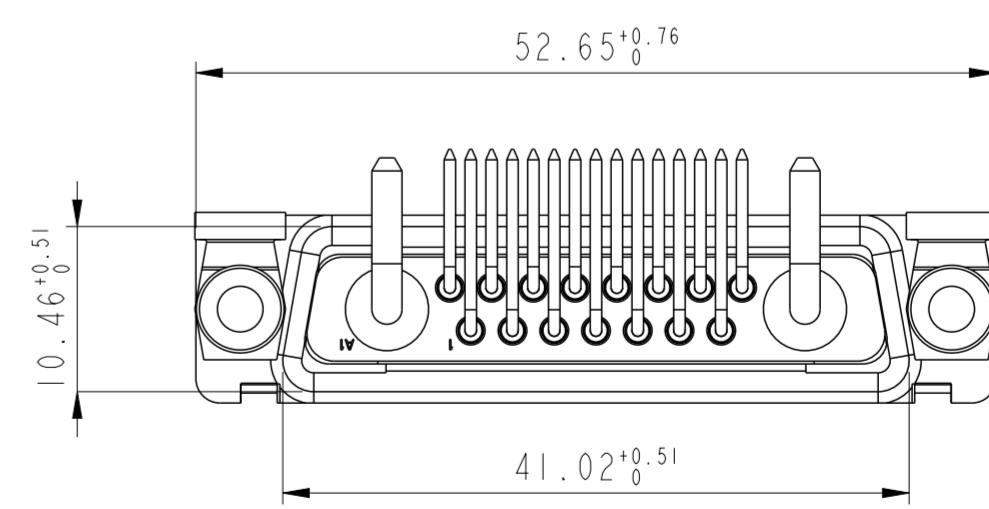
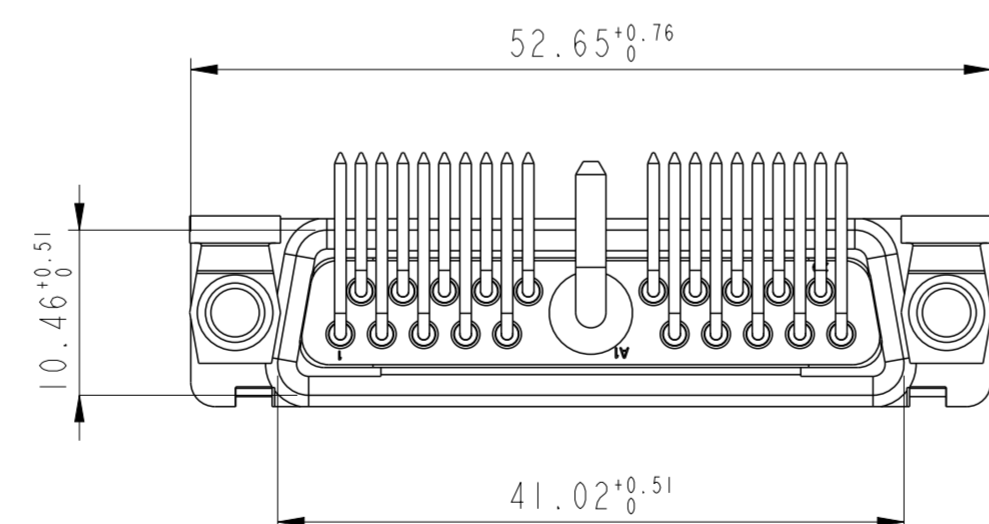
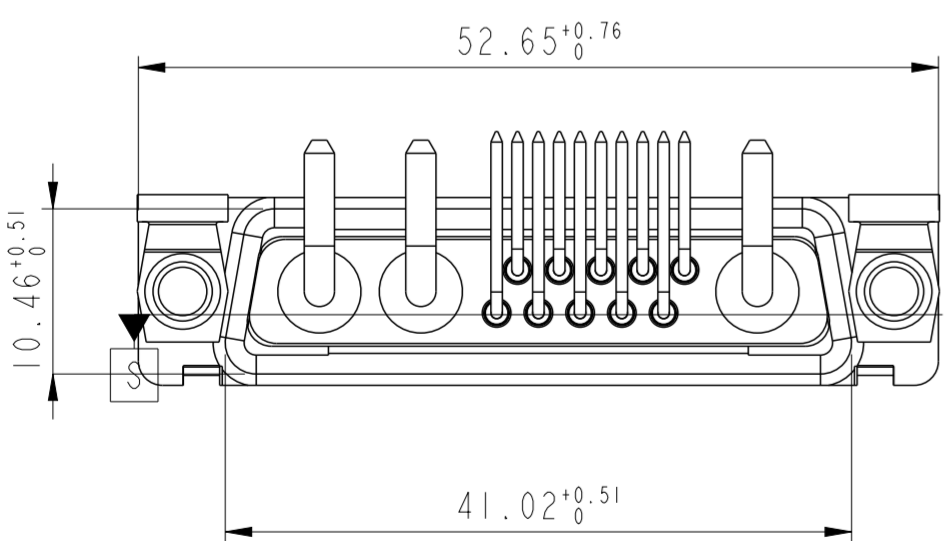
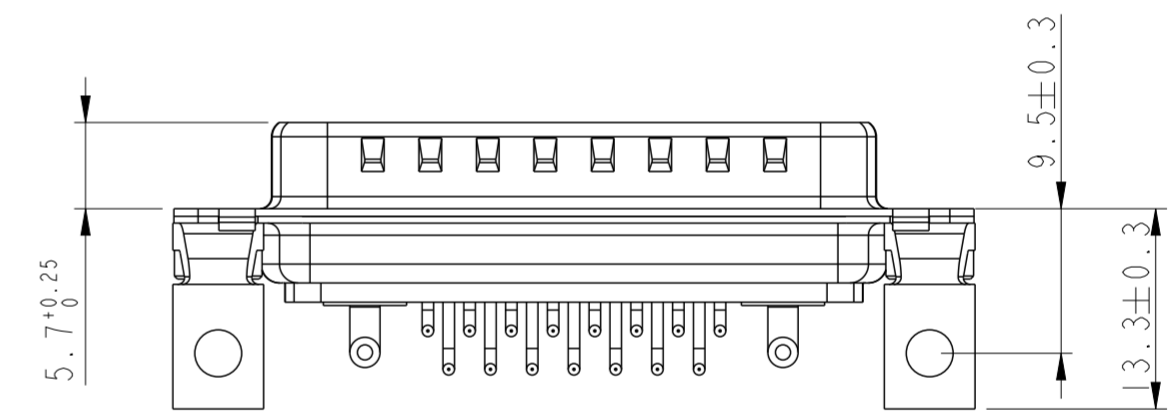
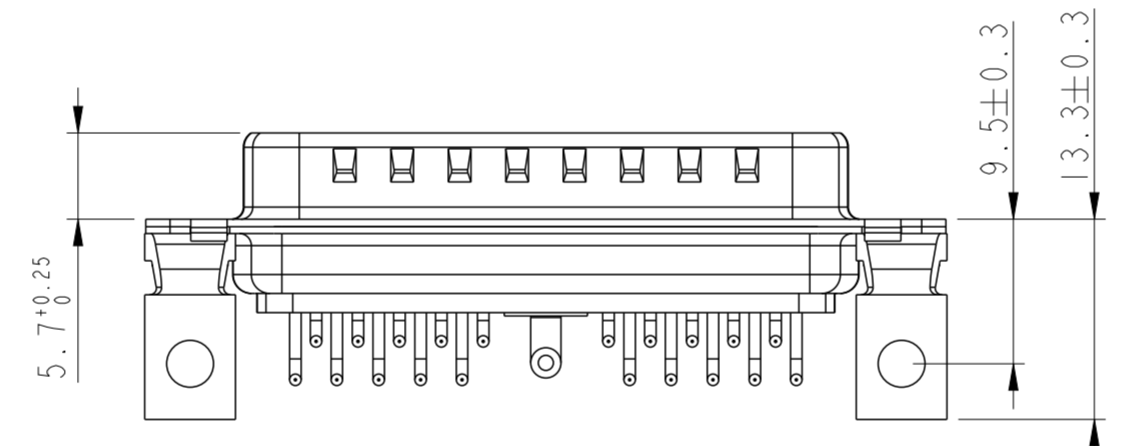
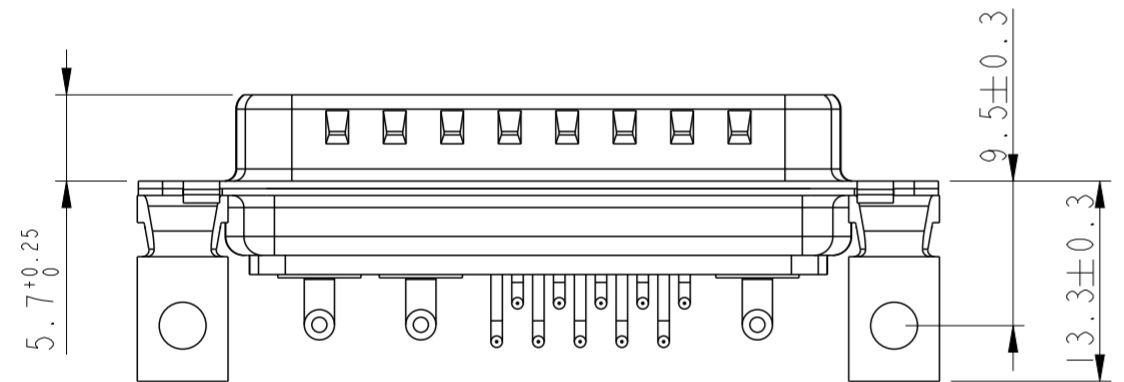
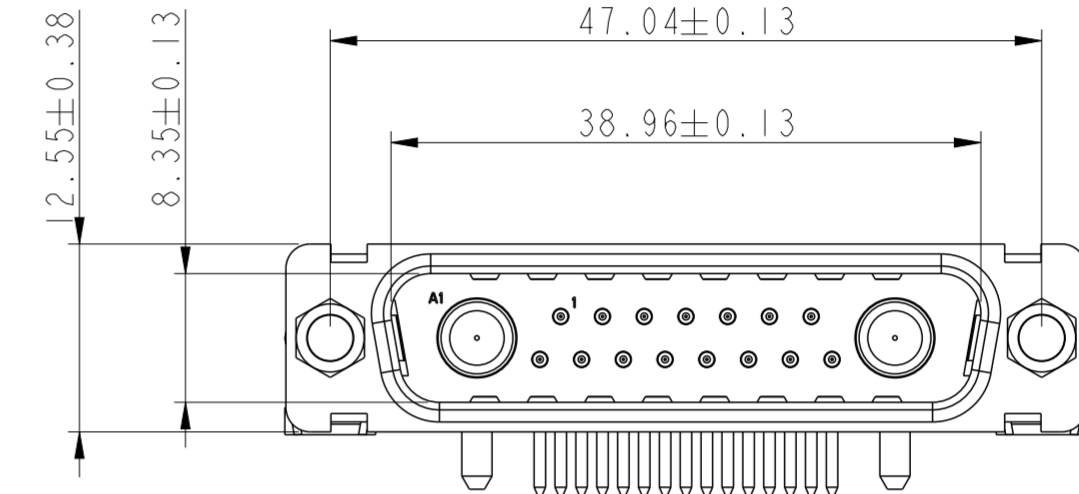
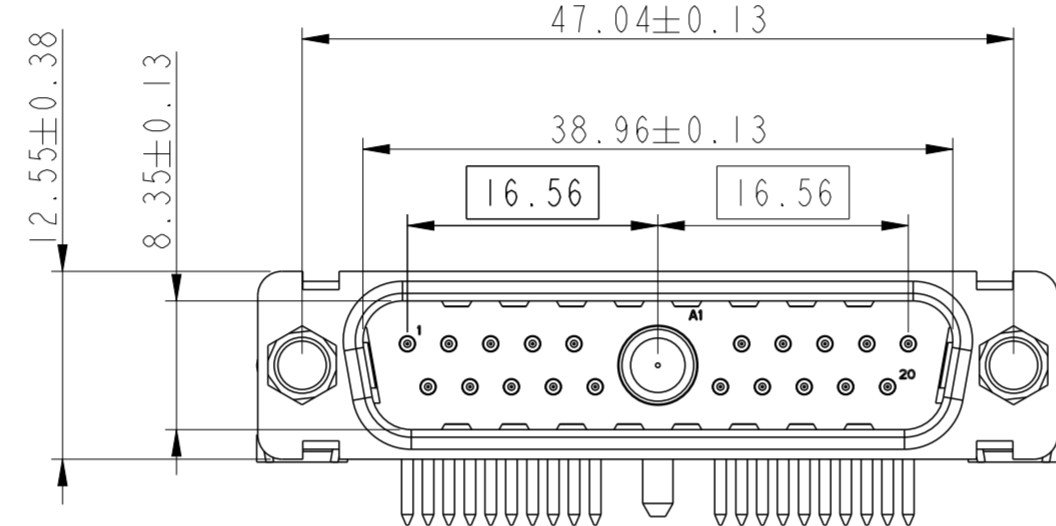
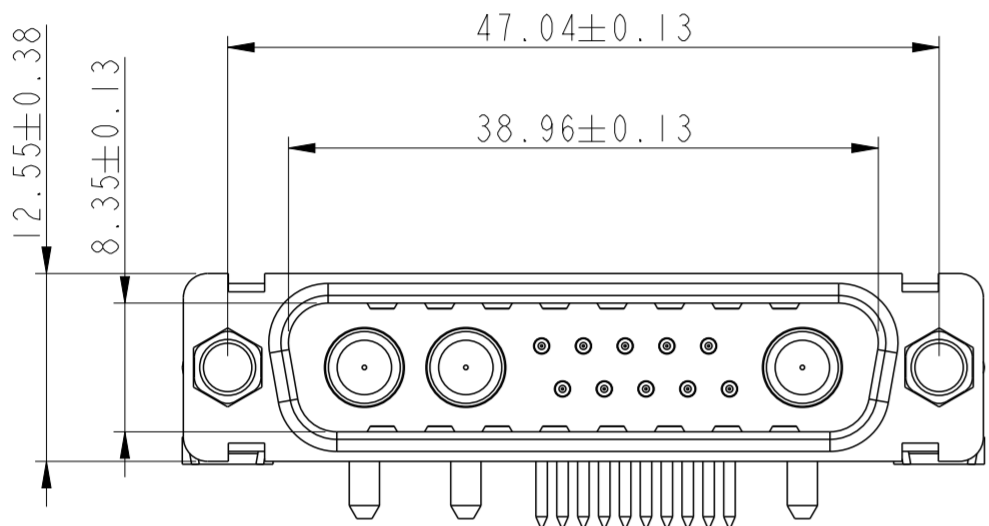
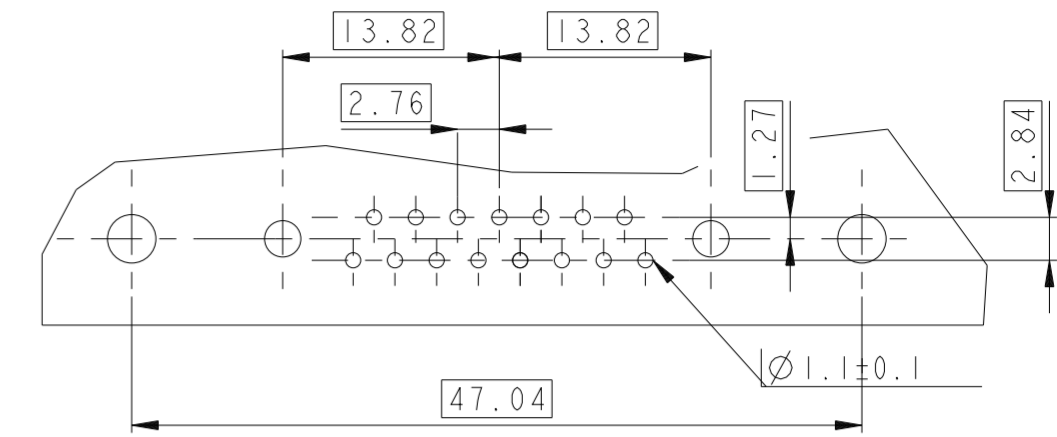
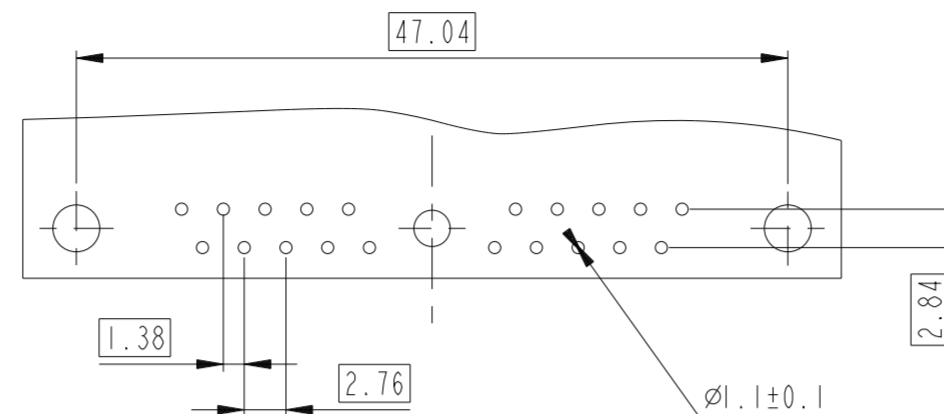
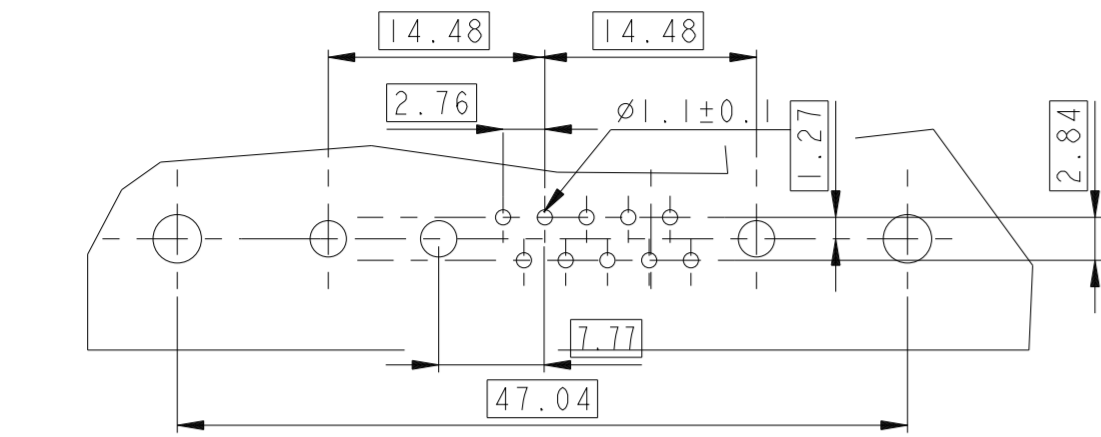
LAYOUT AND CONNECTOR DIMENSIONS

For PCB hole diameters see table I sheet 1

17W2

LAYOUT AND CONNECTOR DIMENSIONS

For PCB hole diameters see table I sheet 1



Amphenol FCI

© 2016 AFCI

spec ref	dr	1, Product Eng	2015/06/13	projection	mm	size	A2	scale	2:1
tolerance std	eng	Gregar Mathew	2019/11/09		mm	ecn no	ELX-433023-1	rel level	Released
ISO 406	chr	-	-						
ISO 1101	appr	Varma Sudhir	2019/11/12	product family	-	rel level	Released		
surface	linear	0.X	±0.30	Amphenol FCI		TITLE		dwg no	C01-8639-2305c
		0.XX	±0.10	SUB MALE DW US FOOT PRINT		MIXED POWER RIGHT ANGLE SOLDER		rev	E
ISO 1302	angular	0°	±2°	cat. no.	-	Product - Customer Drw	sheet 5 of 6		

PDS: Rev :E

STATUS:Released

Printed: Nov 12, 2019

21WA4

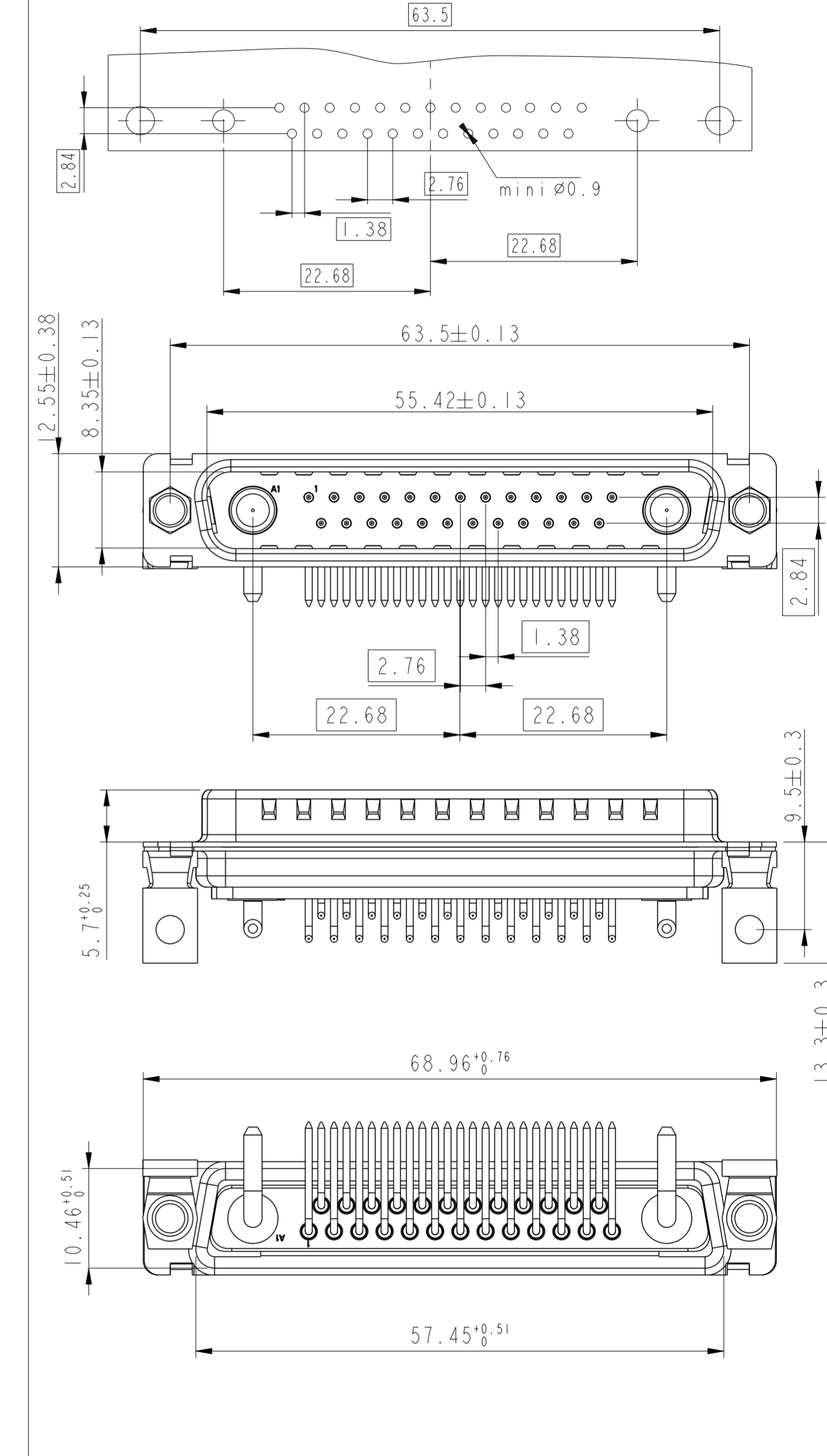
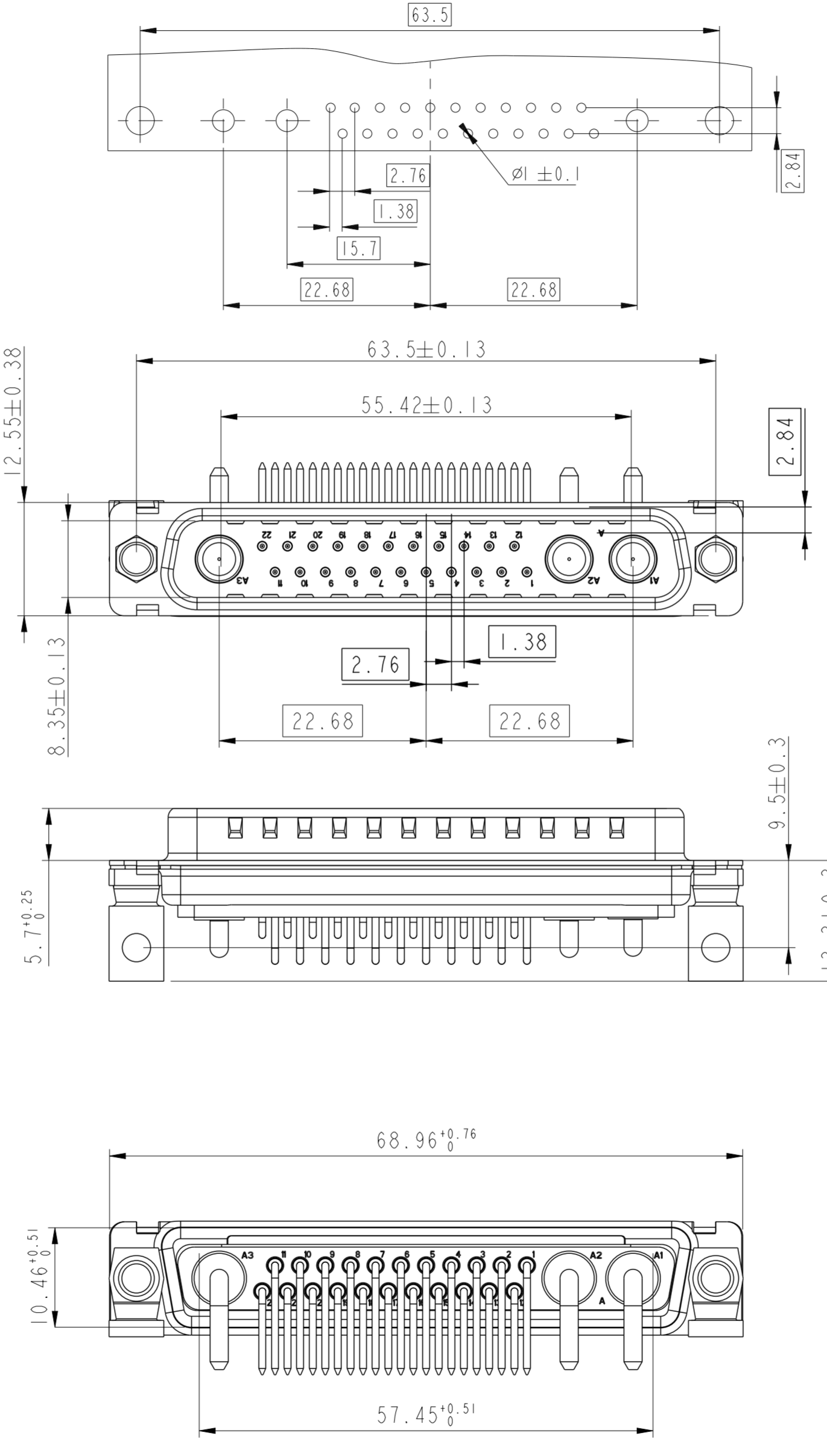
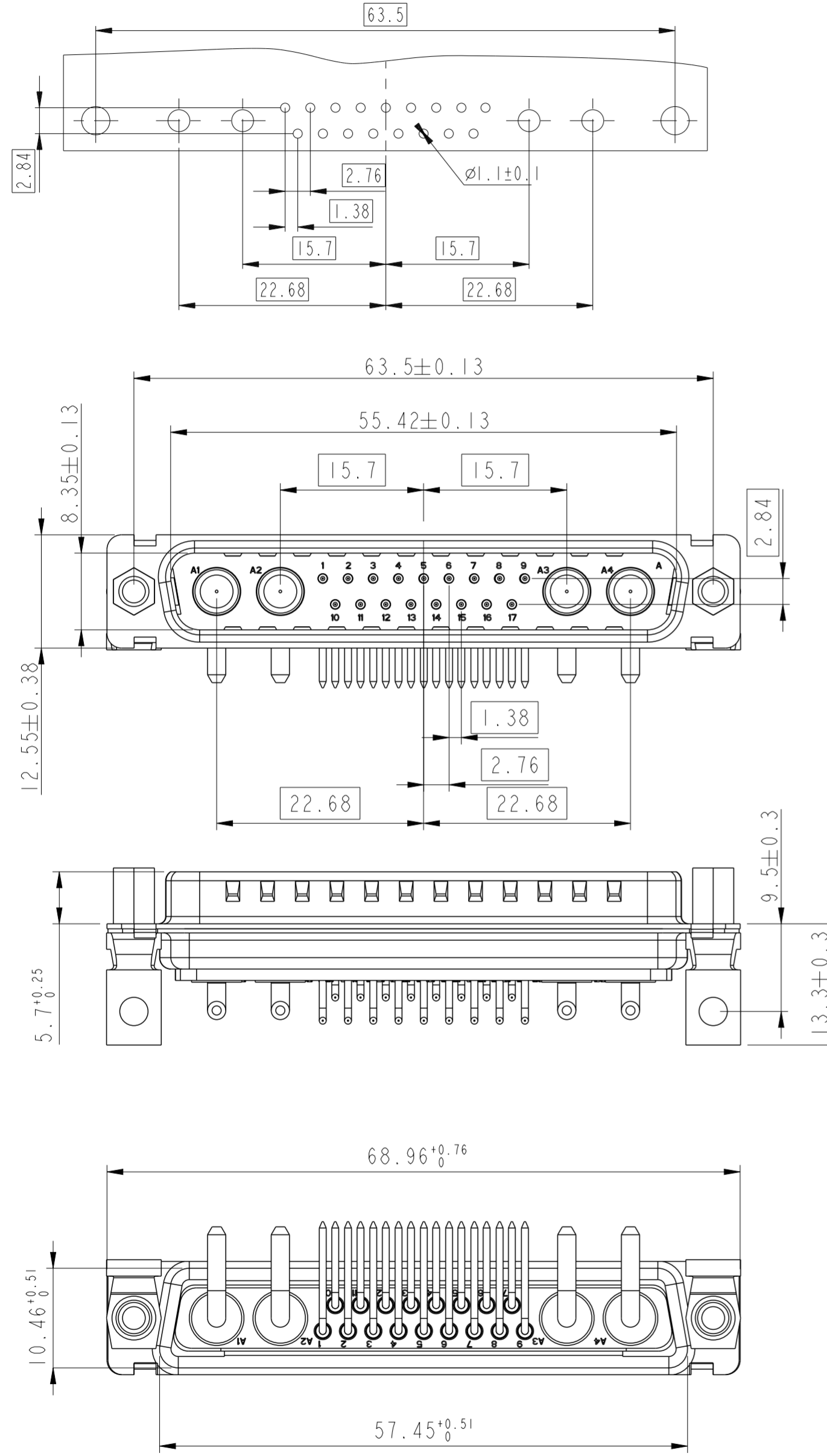
LAYOUT AND CONNECTOR DIMENSIONS
For PCB hole diameters see table I sheet I

25W3

LAYOUT AND CONNECTOR DIMENSIONS
For PCB hole diameters see table I sheet I

27W2

LAYOUT AND CONNECTOR DIMENSIONS
For PCB hole diameters see table I sheet I



Amphenol FCI

© 2016 AFCI

spec ref	1, Product Eng	2015/06/13	projection	mm	size	A2	scale	2:1
tolerance std	eng	Gregar Mathew	2019/11/09		ecn no	ELX-33023-1		
ISO 406	chr	-	product family			rel level	Released	
ISO 1101	appr	Varma Sudhir	2019/11/12	TOLERANCES UNLESS OTHERWISE SPECIFIED		Amphenol FCI		title SUB MALE DW US FOOT PRINT MIXED POWER RIGHT ANGLE SOLDER
surface	linear	0.X	±0.30	cat. no.		Product - Customer Drw		sheet 6 of 6
		0.XX	±0.10	title SUB MALE DW US FOOT PRINT MIXED POWER RIGHT ANGLE SOLDER		dwg no C01-8639-2305c		rev E
	angular	0°	±2°	title SUB MALE DW US FOOT PRINT MIXED POWER RIGHT ANGLE SOLDER		dwg no C01-8639-2305c		rev E