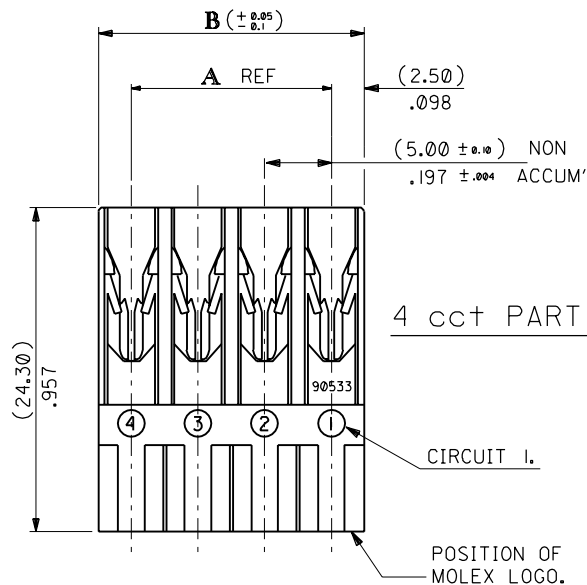
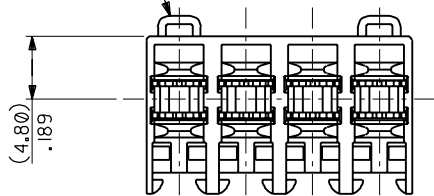
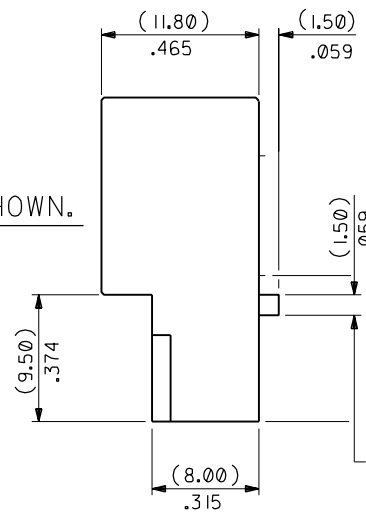


PART NO.
SEE CHART
 DWG. NO.
SDA-90533

TAB APPEARS AT FIRST & LAST CIRCUIT POSITIONS ONLY.



TOOLING STATUS	CCT SIZE	PART No.	DIMn. A	DIMn. B
TOOLED	2	90533 - 0052	(5.00)/.194	(10.00)/.394
TOOLED	3	90533 - 0053	(10.00)/.394	(15.00)/.591
TOOLED	4	90533 - 0054	(15.00)/.591	(20.00)/.787
NOT TOOLED	6	90533 - 0056	(25.00)/.984	(30.00)/1.181



NOTES:

- MATERIAL: HOUSING NYLON 66, 25% GLASS FILLED 94V-0
 COLOUR: BRICK RED
 CONTACT: BRASS - TIN PLATED.
- WIRE RANGE: 0.50² mm - 1.50² mm MAX INSULATION DIA 3.20mm.
- ACCEPTS 6.30mm TAB TO DIN 46244 OR BS 5057
- BOSS NOT PRESENT AFTER TERMINATION
- PARTS STACKABLE AT (5.00)/.197 PITCH
- FOR PARTS SUPPLIED ON TAPE - SEE SUBSEQUENT SHEETS.
- POSITION OF TAPE (WHERE APPLICABLE)
- FOR PRODUCT SPECIFICATION SEE PS 99020-0005.

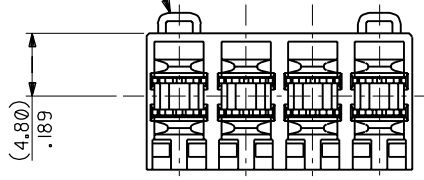
FOR PREVIOUS DRAWING ISSUES SEE MRI.

ADD SHEET 4 ECN: E40177 94 FEB. 17 FM	DRWG BY MOS	CAD/CAM FILENAME SA90533X1 DCN
LTR REVISIONS	CHK'D BY	TITLE MULTIWAY M.W.G. ASSEMBLY
DESIGN DIMENSION (PRIMARY) <input checked="" type="checkbox"/> (MM) <input type="checkbox"/> IN.	APP'D BY	SHEET NO. DATE 10F4 22/01/89
EQUIVALENT DIMENSION (SECONDARY) <input type="checkbox"/> (MM) <input checked="" type="checkbox"/> IN.	SCALE 3:1	PART NO. DWG NO. SIZE SEE CHART SDA-90533 B

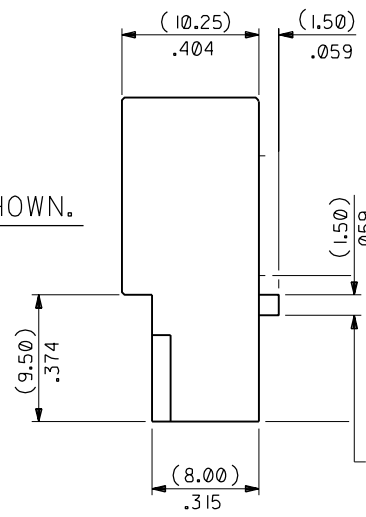
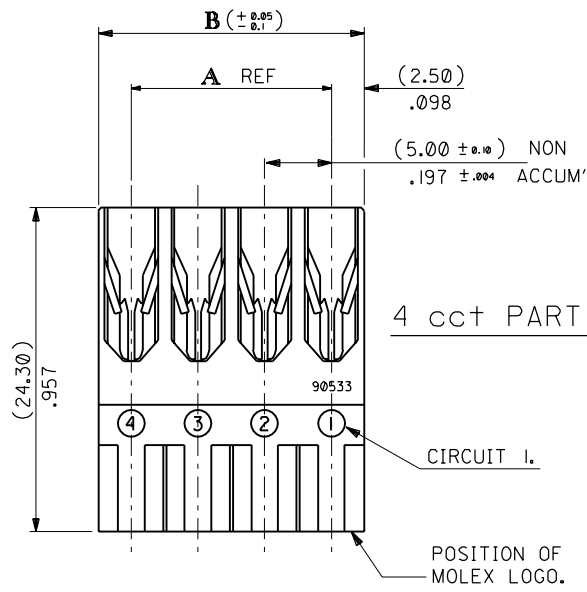
REVISE ONLY ON CAD SYSTEM		THIS DRAWING CONTAINS INFORMATION THAT IS PROPRIETARY TO MOLEX INC. & SHOULD NOT BE USED WITHOUT WRITTEN PERMISSION
MOS		SHL. REV.
MOS		4 E
MOS		3 E
MOS		2 E
MOS		1 E

PART NO. SEE CHART
 DWG. NO. SDA-90533

TAB APPEARS AT FIRST & LAST CIRCUIT POSITIONS ONLY.



TOOLING STATUS	CCT SIZE	PART No.	DIMn. A	DIMn. B
TOOLED	3	90533 - 1053	(10.00)/.394	(15.00)/.591
TOOLED	4	90533 - 1054	(15.00)/.591	(20.00)/.787



NON STANDARD PRODUCT

FOR PREVIOUS DRAWING ISSUES SEE MRI.

E SEE SHEET 1.

LTR	REVISIONS	DIMENSIONS SHOWN (METRIC) INCH	
		INCH	(METRIC)
		3 PLACE ± .008	
		2 PLACE ± .	± 0.20
		1 PLACE ± .	±
DRAFT WHERE APPLICABLE MUST REMAIN WITHIN DIMENSIONS			
		DESIGN DIMENSION (PRIMARY) <input checked="" type="checkbox"/> (MM)	<input type="checkbox"/> IN.
		EQUIVALENT DIMENSION (SECONDARY) <input type="checkbox"/> (MM)	<input checked="" type="checkbox"/> IN.

DRWG BY FM
 CHK'D BY
 APP'D BY
 SCALE 3:1

REVISE ONLY ON CAD SYSTEM		SH.	REV.
CAD/CAM FILENAME: SA90533X2 DGN THIS DRAWING CONTAINS INFORMATION THAT IS PROPRIETARY TO MOLEX INC. & SHOULD NOT BE USED WITHOUT WRITTEN PERMISSION			
TITLE: NON STANDARD MULTIWAY M.W.G. ASSEMBLY			
MOLEX EUROPE		SHEET NO. 20F	DATE 94/02/16
PART NO. SEE CHART	DWG NO. SDA-90533	SIZE B	