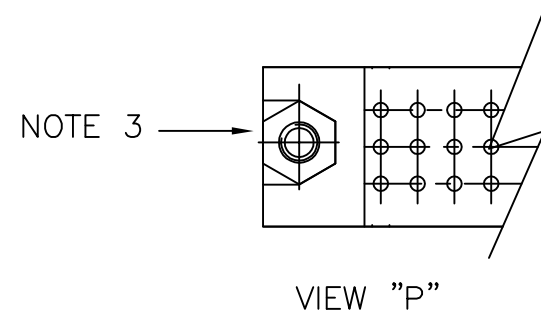
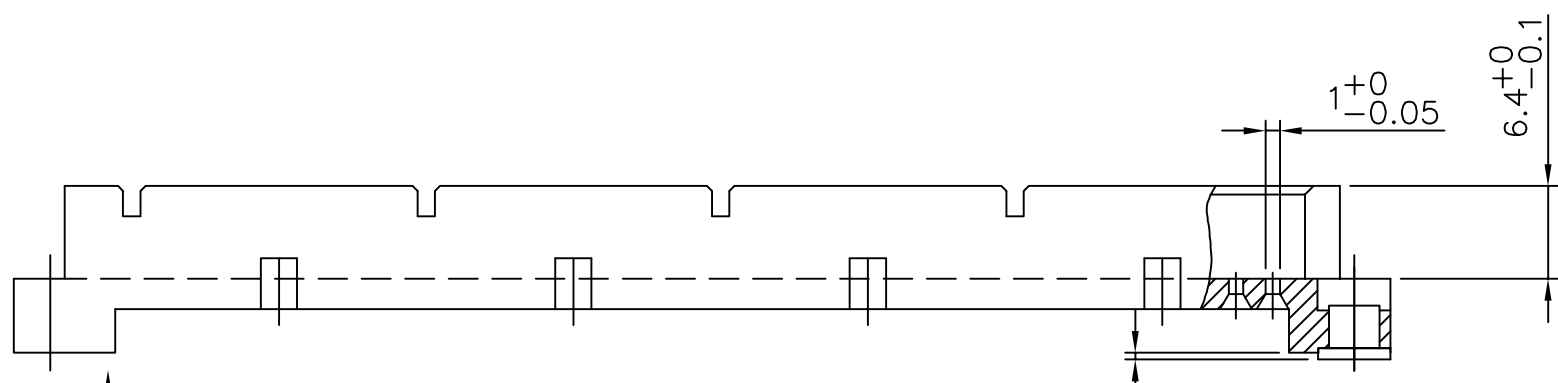
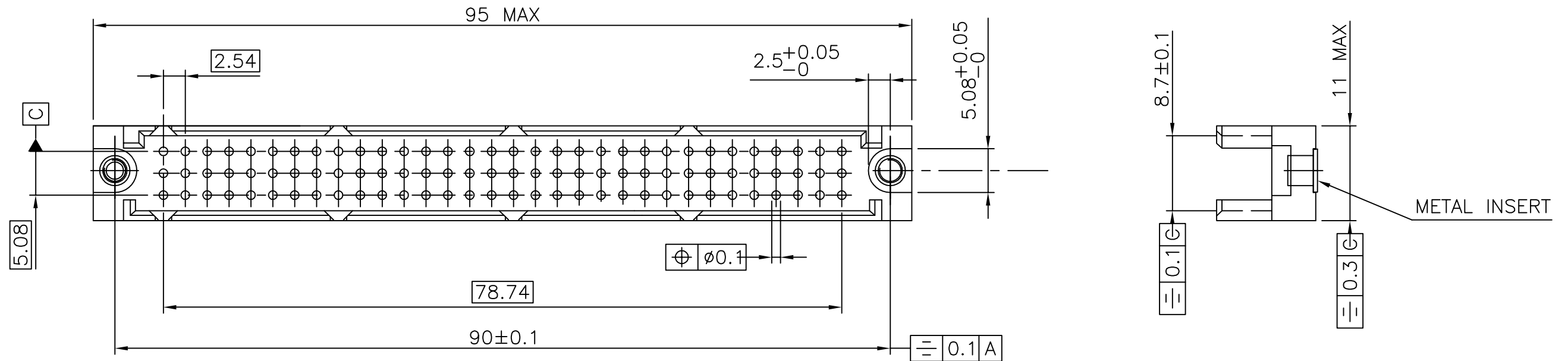


PRODUCT NUMBER	DIM "X"
70007-001	0.2
70007-002	7.45
70007-003	6.85
70007-004	5.85
70007-005	4.10

NOTES:-

1. THE "LF" PRODUCT MEETS EUROPEAN UNION DIRECTIVES AND OTHER COUNTRY REGULATIONS AS DESCRIBED IN GS-22-008.
2. LEADFREE OR RoHS DIRECTIVE LABELLING TO BE PROVIDED AS PER GS-14-920.
3. " LF " SUFFIX TO PRODUCT NUMBER FOR RoHS COMPATIBLE/ LEADFREE VERSION.
4. PARTS WITH AND WITHOUT "LF " SUFFIX ARE FORM-FIT AND FUNCTIONALLY IDENTICAL.
" LF " SUFFIX PROVIDED FOR PART NUMBER STANDARDISATION OF PART THAT MEETS RoHS REQUIREMENTS.
5. MAXIMUM TORQUE OF SCREWS: 10 N/cm



MATERIAL : POLYESTER, UL-94-VO
COLOUR: GREY, RAL 7035

mat'l. code				surface	tolerance	projection	product family
SEE NOTE				ISO 1302	ISO 406 ISO 1101		DIN BP
ltr	ecn no	dr	date	tolerances unless otherwise specified		mm	title
K	I06-0082	MINI	2006-06-01	angles	linear	mm	Backp. Shroud GROUNDING
D	H70324	BKU	1997-06-09			scale 2:1	
E	H90498	HME	1999-09-13				dwg no
F	H90566	VIB	1999-09-24	dr	B. Kuiper	1997-06-09	sheet 1 of 1
G	F00881	VIB	2001-01-22	enr	JF NOTTEAU	1997-06-09	70007
H	I05-0123	MINI	200-50-727	chr	Rakhee George	2006-06-01	size
J	I05-0248	MINI	2005-11-22	appd	Rakhee George	2006-06-01	A3
sheet index	revision sheet	K	1				type
							CUSTOMER Drawing

Copyright FCI
 FCIconnect.com