

P36 series

Low profile rotary code switches



DISTINCTIVE FEATURES

- 3 actuator types
- Sub-miniature size
- Solder and flux sealed, washable



ENVIRONMENTAL SPECIFICATIONS

- Operating temperature: -50 °C to +125 °C (-58 °F to +257 °F)



ELECTRICAL SPECIFICATIONS

- Operating voltage : ≤ 42 V
- Contact load, static : ≤ 0.4 A
- Contact load, dynamic : ≤ 0.1 A
- Initial contact resistance : 80 m Ω max.
- Insulation resistance : 100 M Ω min.



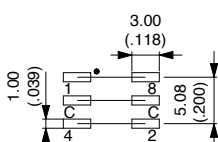
MATERIALS

- Base : UL94-V0, high temperature thermoplastic
- Cover : stainless steel
- Actuator : PA 4.6 nylon
- Contacts : gold over nickel plated phosphor bronze
- Terminals : tin plated

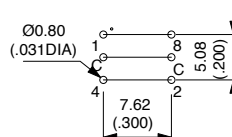


PCB MOUNTING

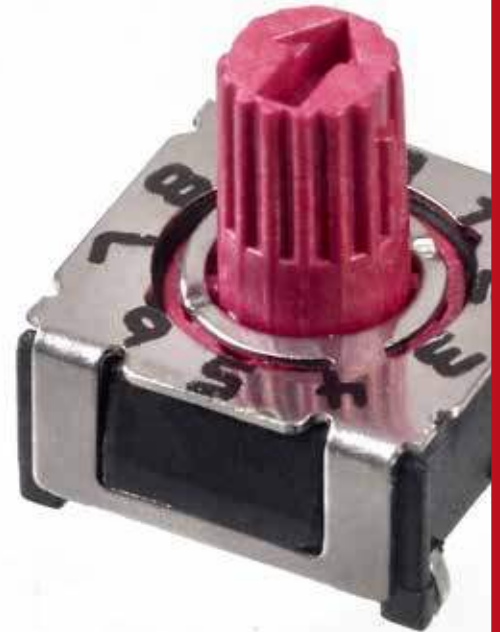
SURFACE MOUNT



THROUGH-HOLE



The company reserves the right to change specifications without notice.



P36 series

Low profile rotary code switches



SOLDERING

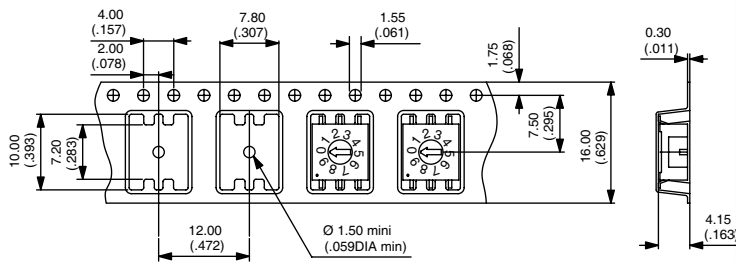
- DIN CEI 68-2-20
- Manual soldering : 340 °C (644 °F) max. for 2 seconds max.
- Wave soldering : 280 °C (536 °F) max. for 5 seconds max.
- Reflow soldering : 260 °C (500 °F) max. for 10 seconds max.



PACKAGING

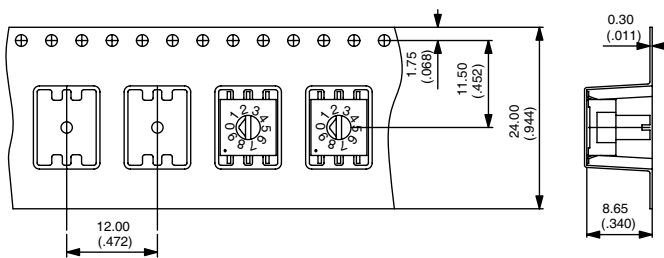
P36SMT1..

1,300 pieces per reel
dim.A = 22.4 mm
dim B = 16.4 mm



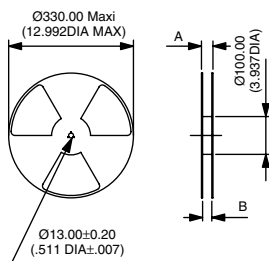
P36SMT3..
P36SMT8..

600 pieces per reel
dim.A = 30.4 mm
dim B = 24.4 mm



Reels : To order a SMT product with tape & reel packaging, add "TR" at the end of its part number.

Tubes : 50 pieces (through-hole or SMT) per tube.

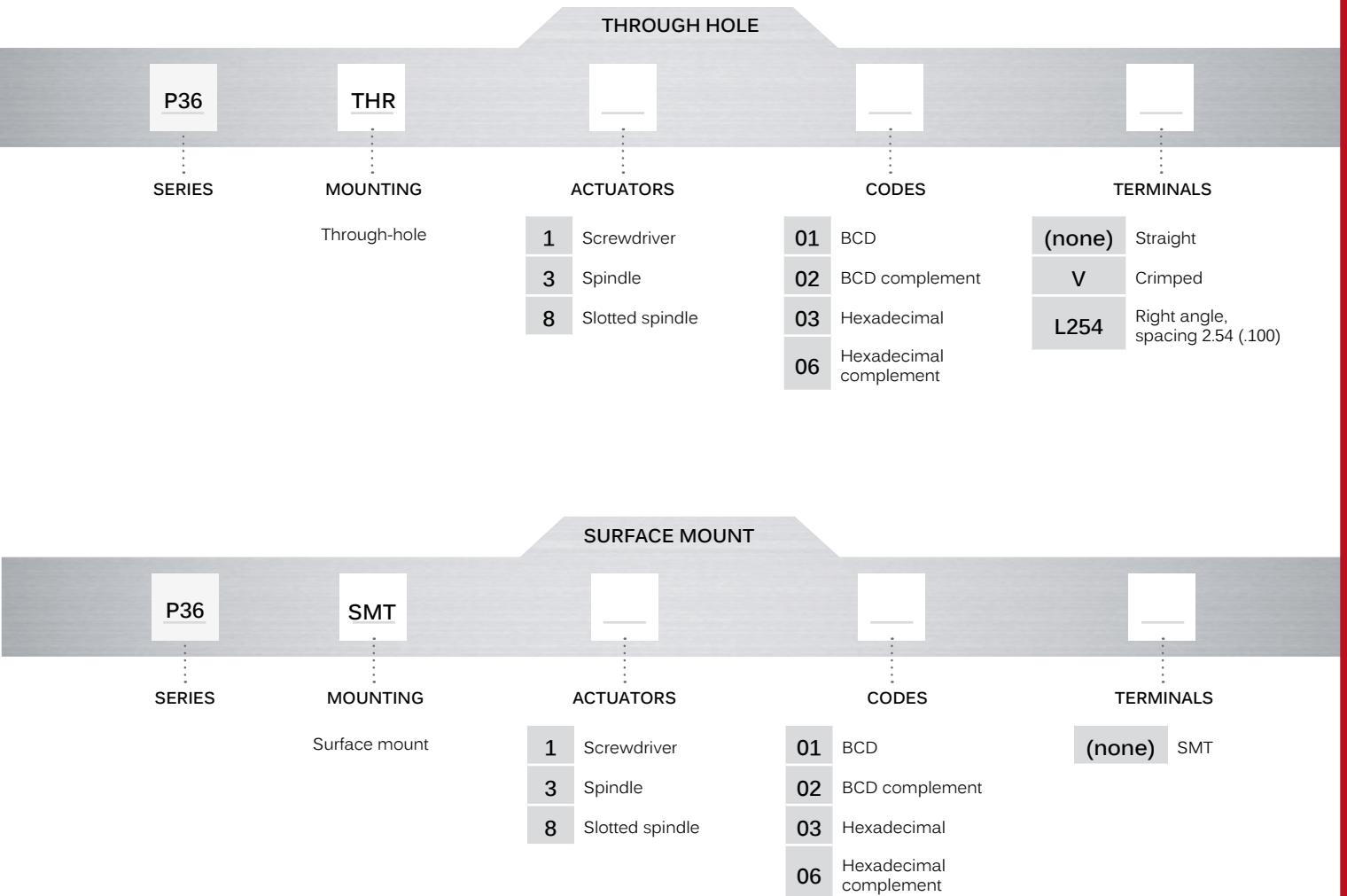


P36 series

Low profile rotary code switches



BUILD YOUR PART NUMBER



ABOUT THIS SERIES

On the following pages, you will find successively basic part numbers of switches and options in the same order as in above chart.

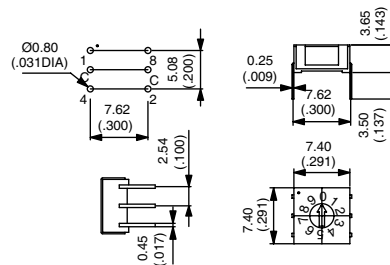
P36 series

Low profile rotary code switches

THROUGH-HOLE



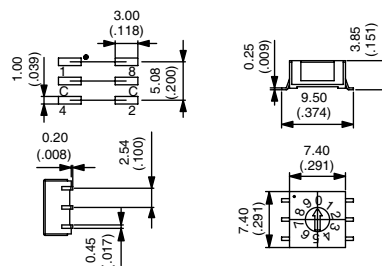
P36THR



SURFACE MOUNT



P36SMT



P36 series

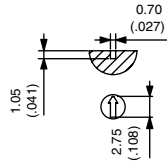
Low profile rotary code switches

ACTUATORS

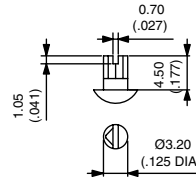


- 1 Screwdriver
- 3 Spindle
- 8 Slotted spindle

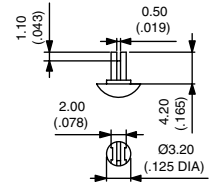
Actuator colour
depending on codes :
BCD : Red
BCD compl. : Orange
Hexadecimal : Grey
Hexadec. compl. : White



1

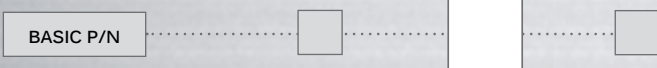


3



-8

CODES



- 01 BCD
- 02 BCD complement
- 03 Hexadecimal
- 06 Hexadecimal complement

POSITION	C	1	2	4	8	MARKING
0	●					0
1	●	●				1
2	●		●			2
3	●	●	●			3
4	●			●		4
5	●	●			●	5
6	●		●	●		6
7	●	●	●	●		7
8	●				●	8
9	●	●			●	9

01

POSITION	C	1	2	4	8	MARKING
0	●	●	●	●	●	0
1	●		●	●	●	1
2	●	●		●	●	2
3	●			●	●	3
4	●	●	●		●	4
5	●		●		●	5
6	●	●			●	6
7	●				●	7
8	●	●	●	●		8
9	●		●	●		9

02

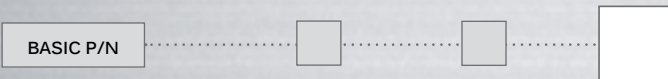
POSITION	C	1	2	4	8	MARKING
0	●					0
1	●	●				1
2	●		●			2
3	●	●	●			3
4	●			●		4
5	●	●			●	5
6	●		●	●		6
7	●	●	●	●		7
8	●				●	8
9	●	●			●	9
10	●		●		●	10
11	●	●	●		●	11
12	●			●	●	12
13	●	●		●	●	13
14	●		●	●	●	14
15	●	●	●	●	●	15

03

POSITION	C	1	2	4	8	MARKING
0	●	●	●	●	●	0
1	●		●	●	●	1
2	●	●		●	●	2
3	●			●	●	3
4	●	●	●		●	4
5	●		●		●	5
6	●	●			●	6
7	●				●	7
8	●	●	●	●		8
9	●		●	●		9
10	●	●		●		10
11	●			●		11
12	●	●	●			12
13	●		●			13
14	●	●				14
15	●					15

06

TERMINALS

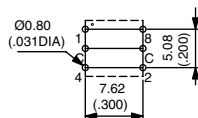


- (none) Straight or SMT
- V Crimped *
- L254 Right angle, spacing 2,54 (.100) *

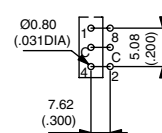
* Not available with surface mount mounting



SMT



Crimped



Right angle