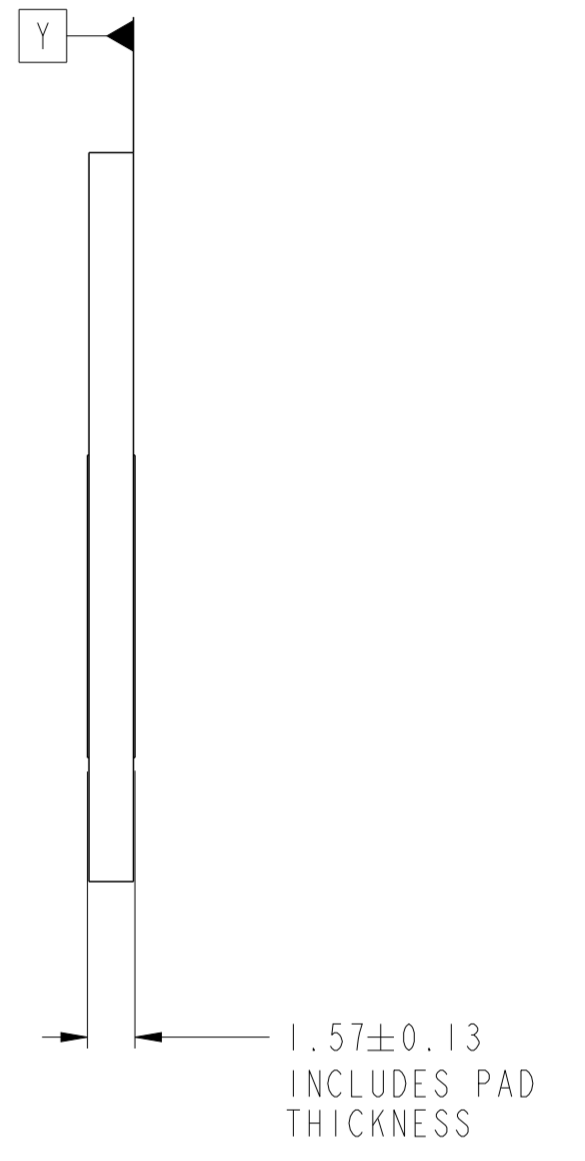
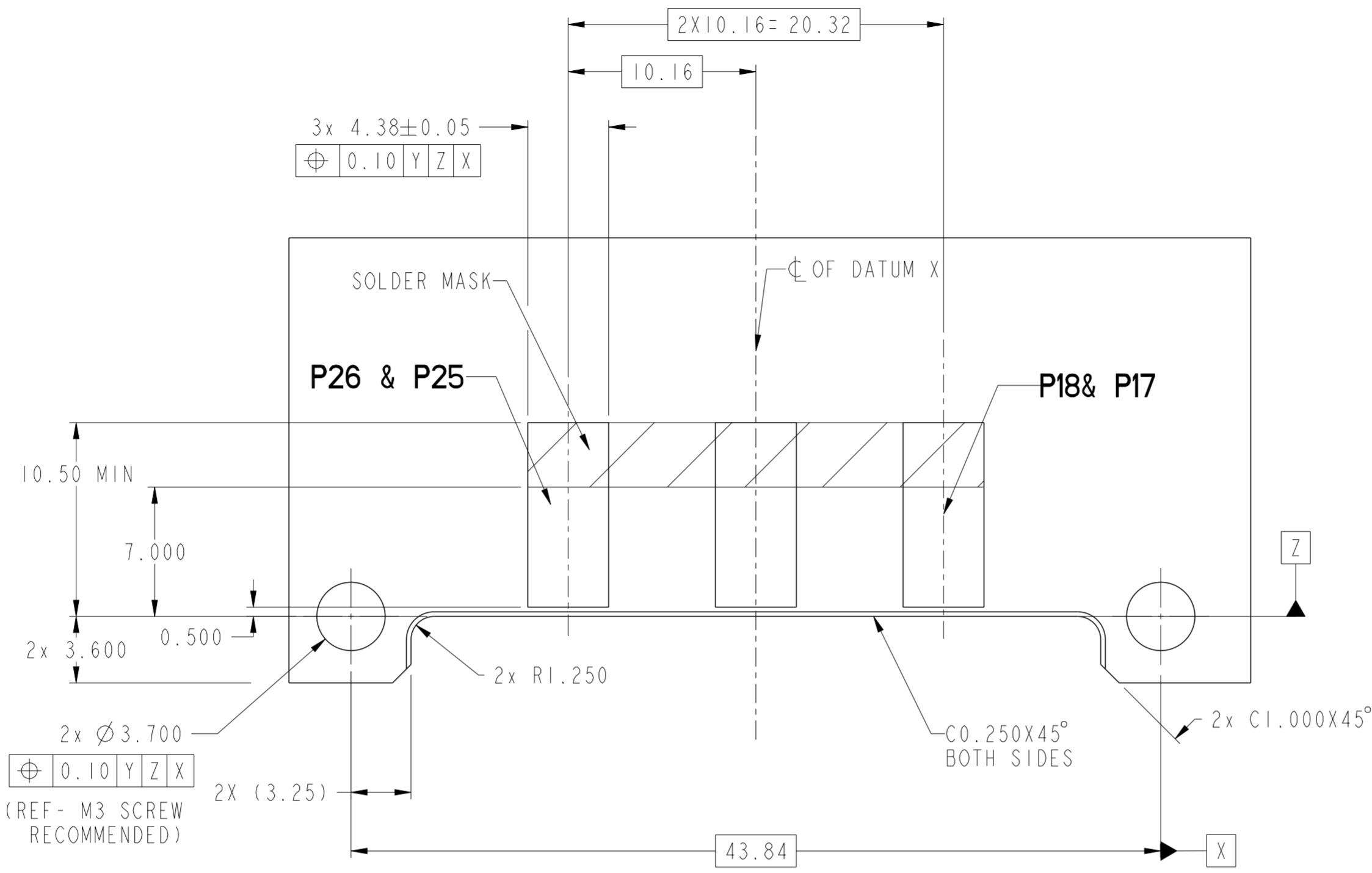


SECTION C-C

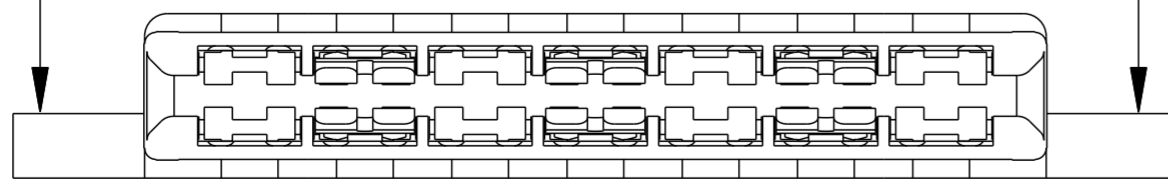
Amphenol
FCi

© 2016 AFCi

spec ref	-	dr	Eric Jiang	2013/03/26	projection	MM	size	A2	scale	3:1	
tolerance std	ASME Y14.5	eng	Sunny2 Liu	2016/05/18			ecn no	ELX-DG-24036-1	rel level	Released	
TOLERANCES UNLESS OTHERWISE SPECIFIED		chr	Terris Liu	2016/05/20			product family	CARD EDGE		rel level	Released
surface	ASME Y14.5	appr	Pai-Ming Zheng	2016/05/24			title	STRADDLE MOUNT REC 28P HIGH POWER CARD EDGE		cat. no.	-
linear	0.X ±0.5 0.XX ±0.3 0.XXX ±0.10	Amphenol FCi	Amphenol FCi		title	STRADDLE MOUNT REC 28P HIGH POWER CARD EDGE	cat. no.	-	Product - Customer Drw	sheet 1 of 4	
angular	0° ±2°	PDS: Rev :B		STATUS:Released		Printed: May 24, 2016					



**RECOMMENDED PCB LAYOUT
AS VIEWED**



spec ref	-	dr	Eric Jiang	2013/03/26	projection	MM	size	A2	scale	3:1	
tolerance std	ASME Y14.5	eng	Sunny2 Liu	2016/05/18			ecn no	ELX-DG-24036-1			
TOLERANCES UNLESS OTHERWISE SPECIFIED		chr	Terris Liu	2016/05/20			rel level	Released			
surface	ASME Y14.5	appr	Pei-Ming Zheng	2016/05/24			product family	CARD EDGE			
linear	0.X ±0.5 0.XX ±0.3 0.XXX ±0.10			title	STRADDLE MOUNT REC 28P HIGH POWER CARD EDGE			dwg no	10124027		
angular	0° ±2°			cat. no.	-			Product - Customer Drw	sheet 2 of 4		

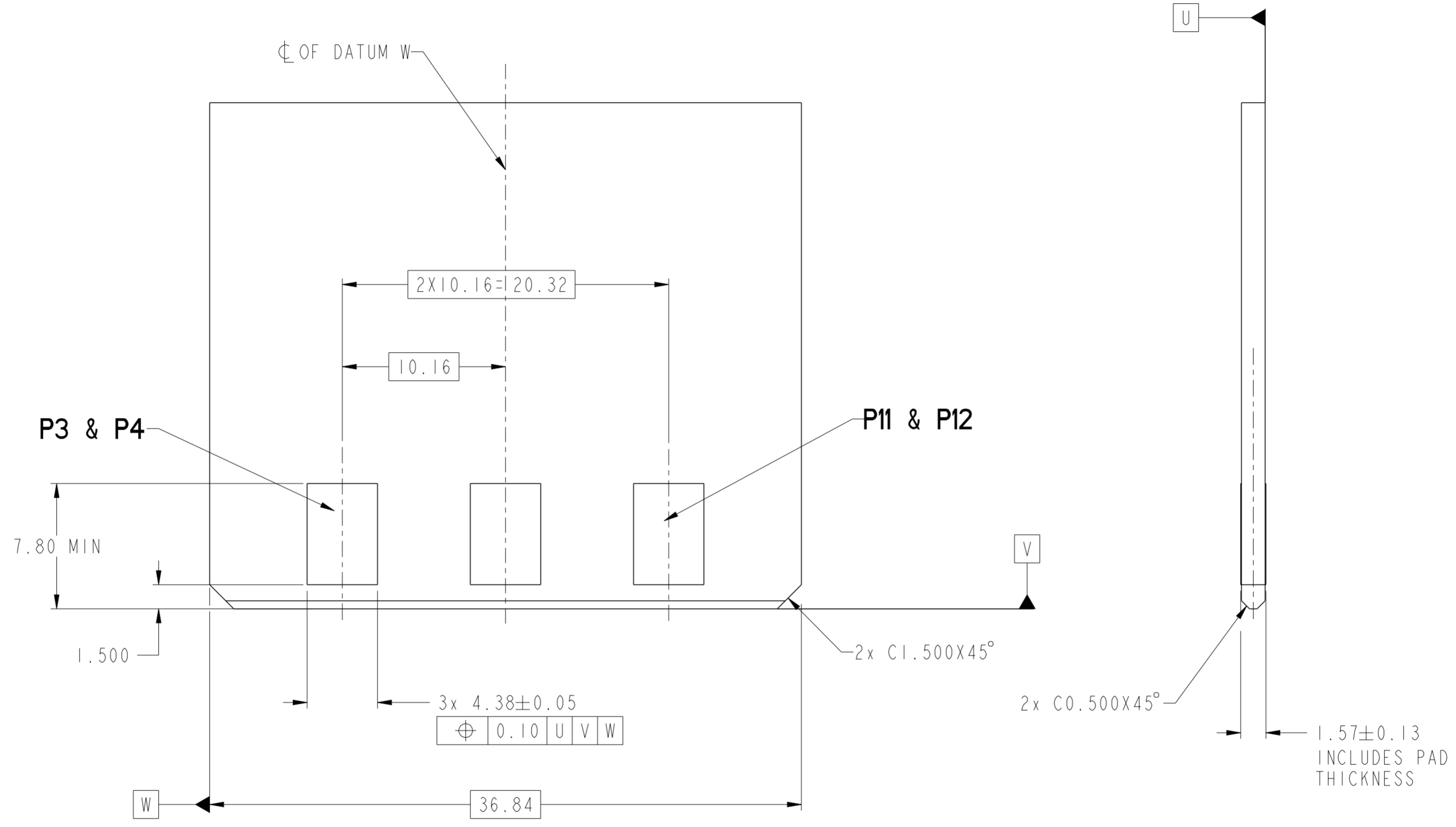
PDS: Rev :B

STATUS:Released

Printed: May 24, 2016

Amphenol
FCI

© 2016 APCI



RECOMMENDED MATING BOARD FOOTPRINT

Amphenol FCI

© 2016 AFCI

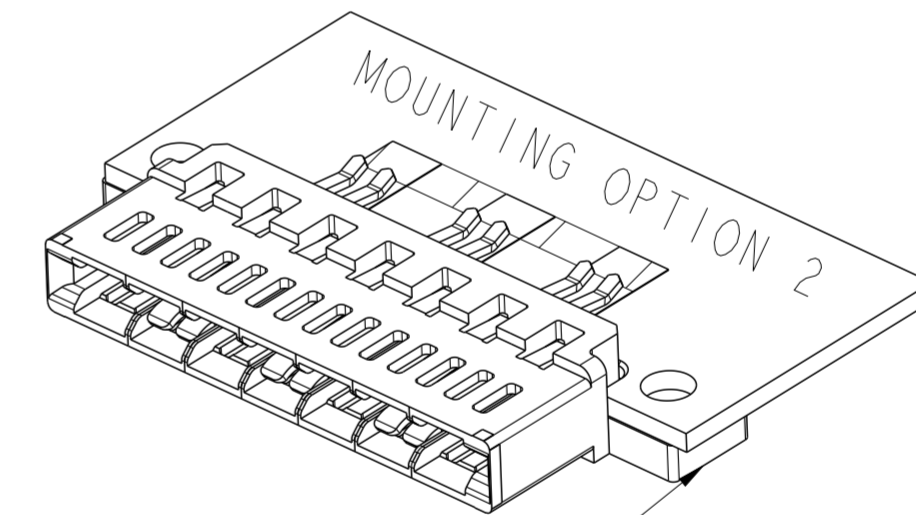
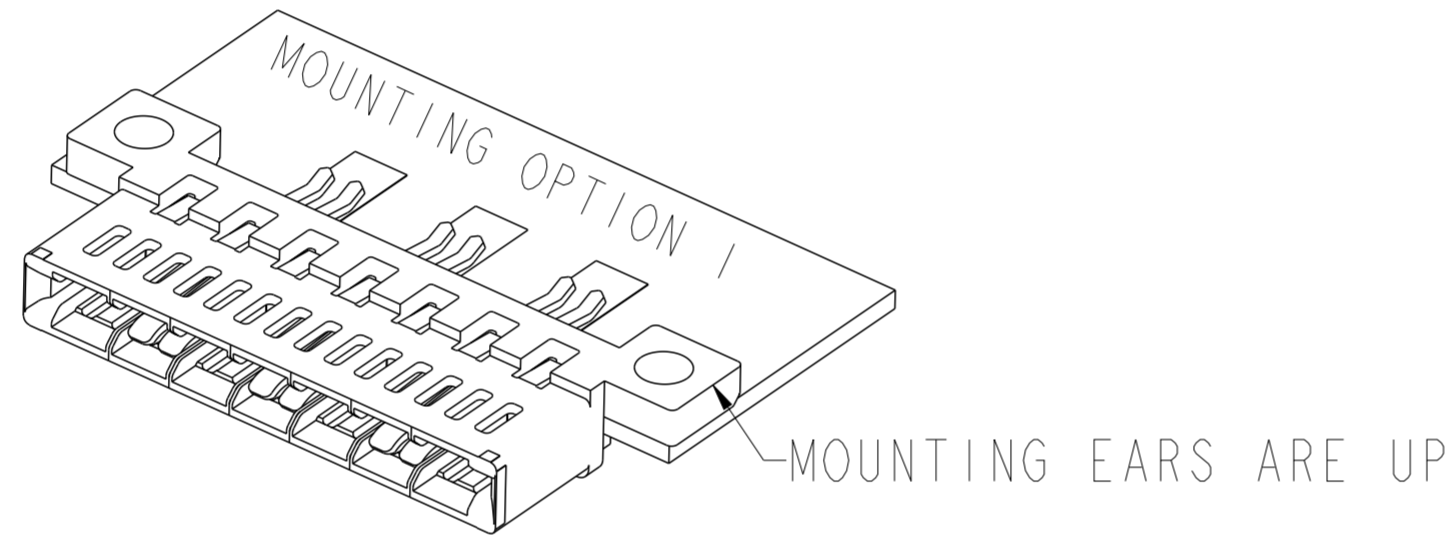
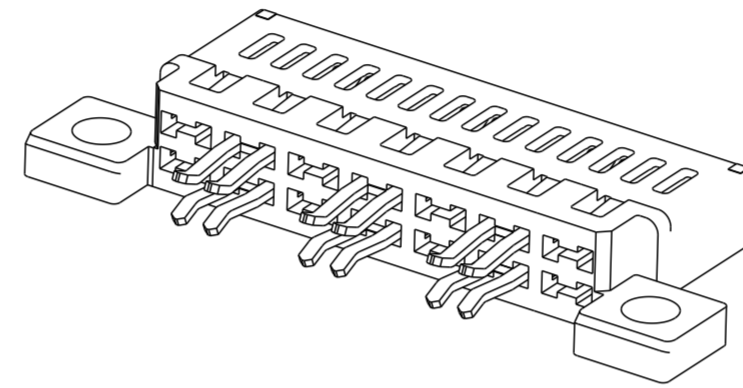
spec ref	-	dr	Eric Jiang	2013/03/26	projection	MM	size	A2	scale	1:1
tolerance std	-	eng	Sunny2 Liu	2016/05/18			ecn no	ELX-DG-24036-1	rel level	Released
ASME Y14.5	TOLERANCES UNLESS OTHERWISE SPECIFIED									
surface	linear	0.X	±0.5							
ASME Y14.5	angular	0°	±2°		cat. no.	-	Product - Customer Drw	sheet 3 of 4		

PDS: Rev :B

STATUS:Released

Printed: May 24, 2016

PART NUMBER 10124027-001LF



NOTES:

1. CONNECTOR MATERIALS:
 HOUSING: HIGH TEMPERATURE THERMAL PLASTIC, BLACK
 UL 94V-0 COMPLIANT
 CONTACTS: HIGH PERFORMANCE COPPER ALLOY.
2. CONTACT FINISH REF. GS-12-604 SECTION 5.2.
3. PRODUCT SPECIFICATION: GS-12-604.
4. APPLICATION SPECIFICATION: GS-20-128.
5. PRODUCT MARKING ON HOUSING IN AREA SHOWN MEETS AFCI SPECIFICATION: GS-24-007.
6. PACKAGING MEETS FCI SPECIFICATION GS-14-937.
7. HOUSING COMPONENT WILL WITHSTAND EXPOSURE TO 260°C PEAK TEMPERATURE FOR 60 SECONDS IN A CONVECTION, INFRA-RED, OR VAPOR PHASE REFLOW OVEN.
8. A SYMBOL $\triangle B$ WILL BE NEXT TO ANY DIMENSION, VIEW, OR NOTE WHICH HAS BEEN MODIFIED WITH THE CURRENT DRAWING REVISION.

spec ref	-	dr	Eric Jiang	2013/03/26	projection	MM	size	A2	scale	4:1
tolerance std	ASME Y14.5	eng	Sunny2 Liu	2016/05/18			ecn no	ELX-DG-24036-1		
TOLERANCES UNLESS OTHERWISE SPECIFIED		chr	Terris Liu	2016/05/20			rel level	Released		
		appr	Pai-Ming Zheng	2016/05/24			product family	CARD EDGE		
surface	ASME Y14.5	linear	0.X	±0.5		title STRADDLE MOUNT REC 28P HIGH POWER CARD EDGE	dwg no 10124027	rev B	Product - Customer Drw	
angular	0°	±2°	cat. no.	-					sheet 4 of 4	

PDS: Rev :B

STATUS:Released

Printed: May 24, 2016

Amphenol FCI

© 2016 AFCI