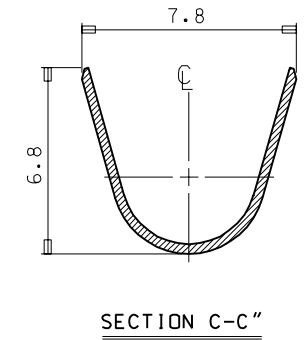
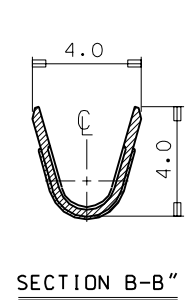
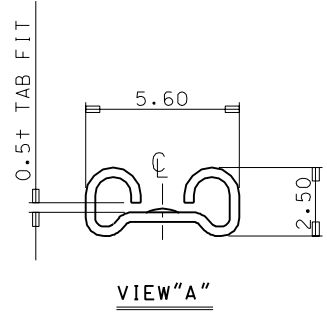
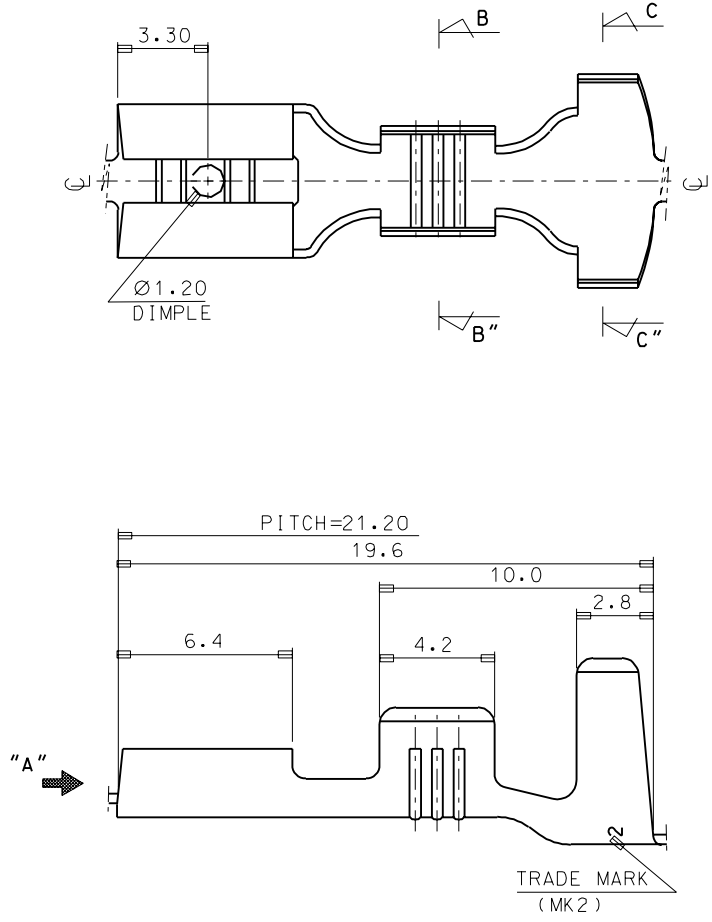


DO NOT SCALE DRAWING
 DIMENSION IN METRIC
 PROJECT NO.
 SIMILAR ITEM
 EDP NO.
 ENG. NO
 SD 35718-15*0



- NOTES
1. MATERIAL: BRASS , 0.35THICKNESS
 2. FINISH: 35718-1500: UNPLATED
35718-1510: POST-TIN PLATED
 3. RECOMMENDED LENGTH OF WIRE STRIP IS 6.2-6.7

ASS'Y PART		QTY/REEL OR PACK	SURFACE AREA	MATERIAL	WIRE RANGE	GENERAL TOLERANCES	molex MOLEX-KOREA CO.,LTD.
DESCRIPTION	ENG.NO.	4,000 0'ty / reel	MM ²	SEE NOTES	AWG: #14 MM ² : -#10	DIM. : ±0.30 ANGLE : ±0.20	
---	---	DIE NO. ---	LAYOUT NO. ---	DIMENSION CLASSIFICATION ■▼: CRITICAL ☒: MAJOR □: MINOR (): REFERENCE	INSULATION RANGE	REVISE ONLY ON CAD SYSTEM	
A	CAD REDRAWING	93-011	93.5.24	DRN BY W.Y. YANG	CHK'D BY B.K. CHOI	TITLE: .187 SLIP-ON RECEPTACLE(L) 1 of 1	
LTR	REVISION RECORD	ECN	DR/CHK	DATE	DIE FEED	APPL FEED	ENG.NO. SD 35718-15*0
			WBDW ---	IBDW ---	APP'D BY	SCALE 6:1	REV A