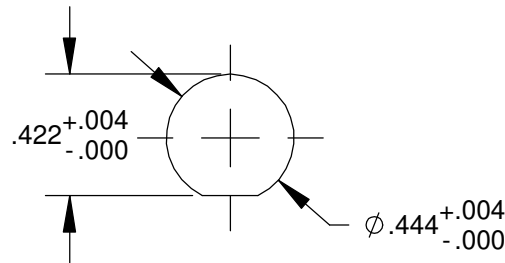
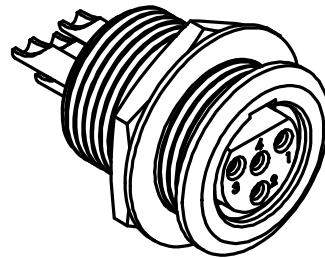


**SPECIFICATIONS**

- 4 contacts, female
- Panel mount
- Locking
- Sealed
- Solder cup termination
- Gold contact finish
- Maximum current 5A
- Dielectric withstanding voltage 1,000 V
- Operating life 5,000 cycles
- Operating temperature -55 to +85°C



**RECOMMENDED  
PANEL CUT-OUT**

**CUSTOMER DRAWING**

**MATERIALS**

- HOUSING AND MOUNTING HARDWARE: copper alloy, nickel plated
- INSULATOR: high grade thermoplastic
- CONTACTS: copper alloy, gold plated

★ STAR SYMBOL DENOTES CRITICAL DIMENSION

THIS DRAWING DESCRIBES A DESIGN CONSIDERED PROPRIETARY IN NATURE, DEVELOPED AND MANUFACTURED BY SWITCHCRAFT INC. AND IS RELEASED ON A CONFIDENTIAL BASIS FOR IDENTIFICATION PURPOSES ONLY.

UNLESS OTHERWISE SPECIFIED

1. ALL DIMENSIONS IN INCHES
  - TWO PLACE DECIMALS ±0.01
  - THREE PLACE DECIMALS ±0.005
  - ANGLES ±1
  - ALL DIA. CONCENTRIC WITHIN 0.005 T.I.R.
2. FEATURES ON THE SAME CENTERLINE MUST BE ALIGNED WITHIN ±0.002
3. REMOVE ALL BURRS

SIZE	WIDTH	MULT	LBS/M	TEMPER
FINISH			MATERIAL	
SPEC No.			SPEC No.	
FIRST USED ON		SCALE 2:1		
DATE DRAWN	BY	CHKD	APVD	
9-15-00	MA	MA	MA	
NAME RECEPTACLE CONNECTOR		PART No.		REV
4 POS, SKT. CONTACTS, SEALED		TRGS4F		A

REV	ECO NUMBER	DATE	BY	APVD
A	24810	9-16-04	JL	MA
REVISIONS				

**DO NOT SCALE DRAWING**

SolidWorks CAD File

