

PART NUMBER	REV	FIRST USED	TERMINATOR	FEED TYPE	DESCRIPTION
1528655-1	A	-	LEADMAKER	MECH POST FEED	CUTS CARRIER
1528655-2	A	-	BENCH	MECH PRE FEED	CUTS CARRIER
1528655-6	A	-	LEADMAKER	MECH POST FEED	CONTINUOUS CARRIER
7-1528655-1	A	-	LEADMAKER	MECH POST FEED	-1 AND SPARE PARTS
7-1528655-2	A	-	BENCH	MECH PRE FEED	-2 AND SPARE PARTS
7-1528655-6	A	-	LEADMAKER	MECH POST FEED	-6 AND SPARE PARTS
7-1528655-7	A	-	-	-	SPARE PARTS KIT

**CRIMP DATA** AMP TERMINAL AMP CRIMP SPECS

TERMINAL NAME: DOUBLE PIN WITH CRIMP JOINT

CRIMP	SIZE	TYPE	RANGE
WIRE	3.30 [.130 IN]	F	1.50-2.50mm²
INSUL	-	-	-
WIRE STRIP LENGTH		APPL INSTRUCTION	
4.50-5.10 [.177-.201 IN]		408-8322 & 408-8490	
TERMINAL		FEED	
APPL SPEC 114-18022		16.00 [.630 IN]	

**TERMINALS APPLIED**

1740660	-	-	-	-
-	-	-	-	-
-	-	-	-	-
-	-	-	-	-
-	-	-	-	-
-	-	-	-	-
-	-	-	-	-
-	-	-	-	-
-	-	-	-	-
-	-	-	-	-

WIRE SIZE	CRIMP HEIGHT	REF SETTING
2.50mm²	2.47 ±0.05 [.097 ±.002 IN]	B 6
1.50mm²	2.22 ±0.05 [.087 ±.002 IN]	D 4

THIS DRAWING IS A CONTROLLED DOCUMENT.

LAYOUT L1528655

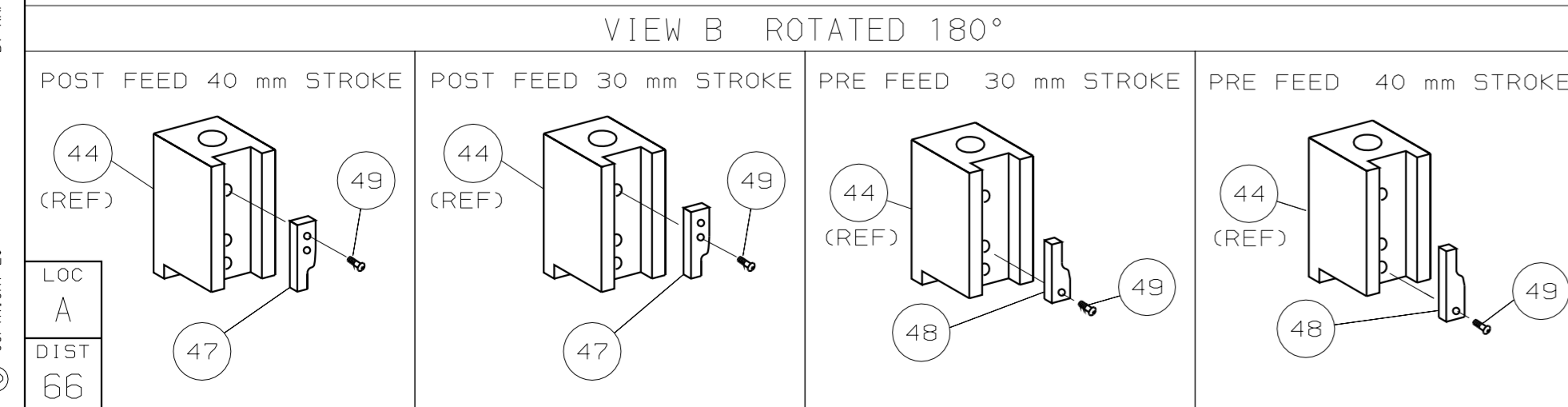
SET UP GAGE 458637-3

RELEASED FOR PUBLICATION BY AMP INCORPORATED. ALL RIGHTS RESERVED.

THIS DRAWING IS UNRELEASABLE.

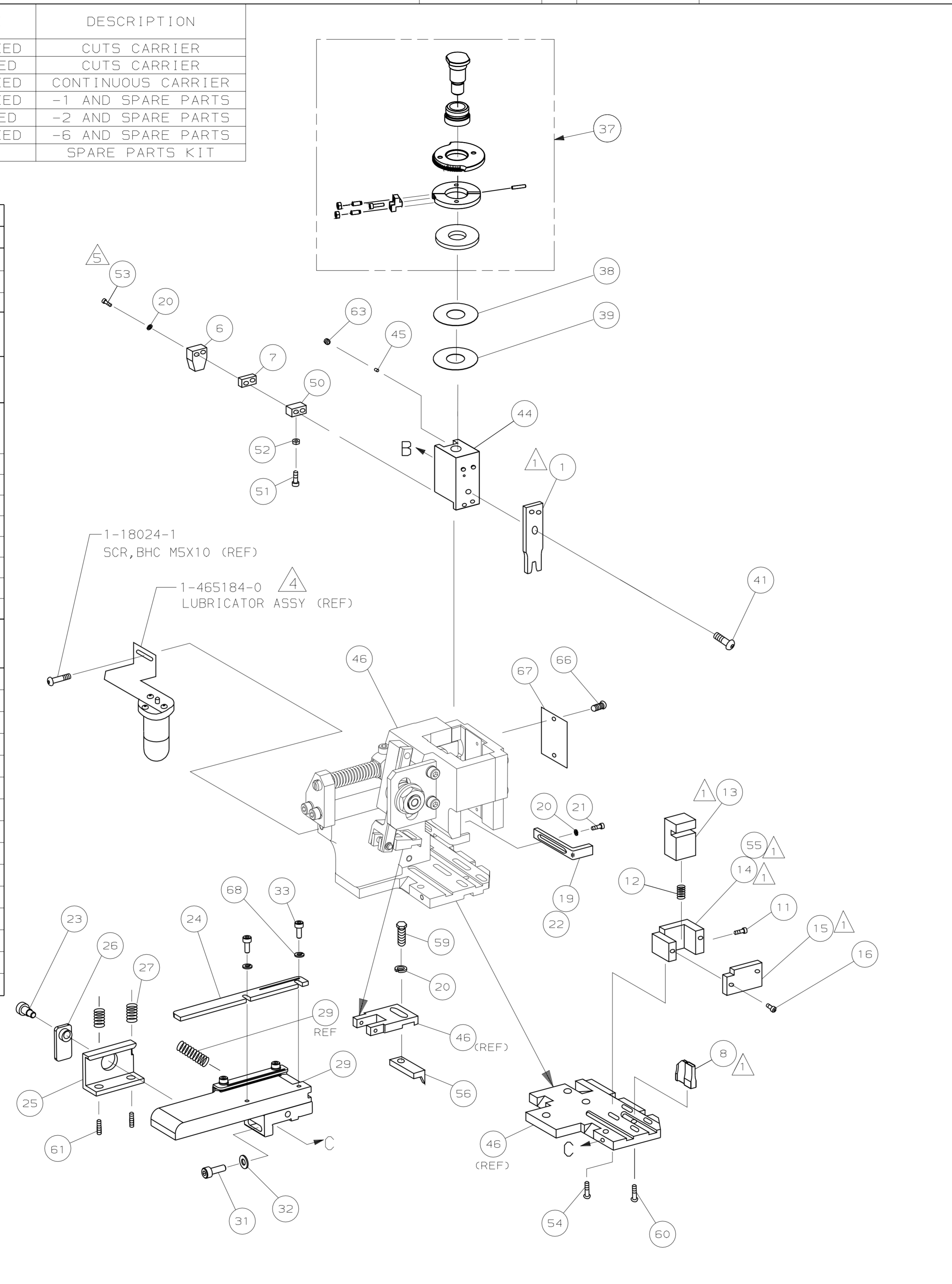
20

- RECOMMENDED SPARE PARTS.
- GREASE RAM, CAM, CAM FOLLOWER AND FEED ROD LIGHTLY.
  - LUBRICATE DAILY PER THE APPLICATOR INSTRUCTION SHEET SUPPLIED WITH THE APPLICATOR.
  - CERTAIN TERMINALS REQUIRE LUBRICATION. REFER TO THE APPLICATOR INSTRUCTION SHEET FOR MORE INFORMATION.
  - CUT TO LENGTH AT ASSEMBLY.



**\* WARNING:**

ON INSTALLATION, SET WIRE DISC TO LARGEST WIRE SIZE SETTING. USE OF SETTINGS BELOW MIN REQUIRED CRIMP HEIGHT SETTING WILL CAUSE DAMAGE TO CRIMP TOOLING.



QTY	REQD PER ASSY	PART NO	DESCRIPTION	ITEM NO				
-	1	1	1	1	1	1528655	PRINT, APPLICATOR LOG SHEET	73
-	1	1	1	1	1	1338705-3	DOCUMENTATION PACKAGE	71
-	2	2	2	2	2	18025-1	WASHER, LOCK (M3) STR GDE REAR	68
-	1	1	1	1	1	461264-5	PLATE, IDENTIFICATION	67
-	2	2	2	2	2	21017-2	SCR, DRIVE (#2x.19) ID PLATE	66
-	1	1	1	1	1	3-18031-0	SCR, SKT SET (M6X6) RAM	63
-	2	2	2	2	2	2-18032-5	SCR, SKT SET (M5X20) DRAG	61
-	1	1	1	1	1	18024-7	SCR, BHC (M4X10) ANVIL	60
-	1	1	1	1	1	5-18022-2	SCR, HEX (M4X8) FEED FINGER	59
-	1	1	1	1	1	1338683-3	PAWL, FEED	56
-	1	-	-	1	-	1338723-1	HOLDER, SHEAR, REAR (NO CUT)	55
-	2	2	2	2	2	18024-8	SCR, BHC (M4X12) SHEAR HOLDER	54
-	2	2	2	2	2	1-18023-5	SCR, SHC (M4X25) TERM HLD DWN	53
-	1	1	1	1	1	18030-1	NUT, HEX (M3) HOLD DOWN	52
-	1	1	1	1	1	811242-5	BUMPER, HOLDDOWN	51
-	1	1	1	1	1	690753-2	SPACER, TONKER	50
-	1	1	1	1	1	18024-3	SCR, BHC (M3X10) CAM	49
-	-	1	-	-	-	1338675-1	CAM, PRE FEED 30 & 40 mm ST	48
-	1	-	1	-	1	1338676-1	CAM, POST FEED 30 & 40 mm ST	47
-	1	1	1	1	1	1320999-3	APPLICATOR BASIC SUBASSY	46
-	1	1	1	1	1	690191-1	PLUG, NYLON	45
-	1	1	1	1	1	1333257-1	RAM	44
-	1	1	1	1	1	2-18024-6	SCR, BHC (M8X25) RAM	41
-	1	1	1	1	1	690125-1	SHIM SUBASSY	39
-	1	1	1	1	1	469367-1	SPACER, FINE ADJUST	38
-	1	1	1	1	1	879103-2	FINE ADJUST HEAD SUBASSY	37
-	2	2	2	2	2	18023-5	SCREW, SHC (M3X12) F/STRP GDE	34
-	1	1	1	1	1	18027-2	WASHER, FLAT (M4)	32
-	1	1	1	1	1	1-18023-2	SCR, SKT CAP (M4X12) MOUNT BLOCK	31
-	1	1	1	1	1	1633082-6	STRIP GUIDE PLATE ASSY	29
-	2	2	2	2	2	1-22284-0	SPRING, DRAG	27
-	1	1	1	1	1	356835-1	LEVER, DRAG RELEASE	26
-	1	1	1	1	1	240792-1	DRAG, TERMINAL	25
-	1	1	1	1	1	2-189124-2	GUIDE, STRIP (FRONT)	24
-	1	1	1	1	1	980371-4	SCR, SHC SHLD	23
-	1	-	1	-	1	690472-2	STRIPPER	22
-	1	1	1	1	1	1-18023-1	SCR, SHC (M4X10) STRIPPER	21
-	4	4	4	4	4	18025-2	WASHER, LOCK (M4) STRIPPER	20
-	-	1	-	-	-	690472-1	STRIPPER	19
-	2	2	2	2	2	18023-2	SCR, SHC (M3X6) REAR SHEAR PL	16
-	1	1	1	1	1	1-690464-9	PLATE, SHEAR (REAR)	15
-	-	1	-	-	-	1320920-1	HOLDER, SHEAR, REAR (CUT)	14
-	1	1	1	1	1	1-690463-4	SHEAR, FLOAT (REAR)	13
-	1	1	1	1	1	3-22280-3	SPRING, SHEAR	12
-	1	1	1	1	1	356885-4	STOP, SHEAR	11
1	2	2	2	1	1	1-1333227-7	ANVIL	8
-	1	1	1	1	1	240641-3	SPACER, DEPRESSOR (REAR)	7
-	1	1	1	1	1	690468-1	DEPRESSOR, SHEAR (REAR)	6
1	2	2	2	1	1	456410-4	CRIMPER, WIRE	1

REVISION OF EACH ASSY NO (WHEN BLANK, USE DWG REVISION)

QTY REQD PER ASSY

DIMENSIONS: mm [INCHES] MATL

DO NOT SCALE PRINT.

TOLERANCES UNLESS OTHERWISE SPECIFIED:

1 PLG DEC ±

2 PLG DEC ±

3 PLG DEC ±

ANGLES ±

SURF TEXTURE: ✓

REMOVE BURRS, BREAK SHARP EDGES RO.38 MAX

DR L.O.F.T.HOUSE 10MAY06 APP M.C.L.IFFORD

CHK - REL 23AUG06 L.O.F.T.HOUSE

NAME FINE ADJ SIDE FD HD-I APPL MACHINE REF HD-I APPL

SCALE - DWG NO 1528655 SHEET 1 OF 1 REV A

CAGE CODE 00779 CUSTOMER AND ASSEMBLY DRAWING