

# 2400-2483.5 MHz & 5150-5875 MHz MIMO 2X2 DUAL BAND CABLED ANTENNA

## Standard Antenna Solutions

802.11 a/b/g/n/ac/ax, includes frequencies of Bluetooth, ZigBee, and Wi-Fi products

Part Numbers: 2246667-1, 2246667-2

### PRODUCT FACTS:

- High performance, low SINR WLAN Dual Band 2x2 MIMO antenna assembly
- Screw mount on chassis/ housing
- Ground plane independent

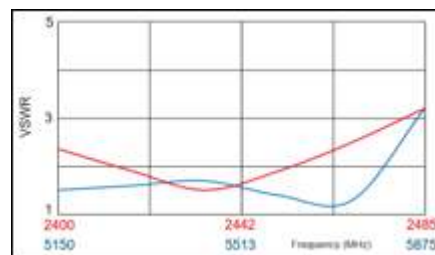
### RECOMMENDATIONS:

- No matching circuits required
- Contact TE for different cable lengths/ colors
- Custom tuning available if keep out zones can't be respected
- RF data measured in free space, data measured within a device may vary

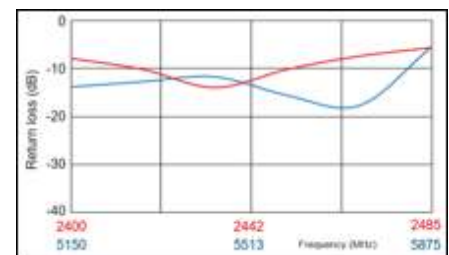
### SPECIFICATIONS:

- Frequency Range: 2400-2483.5 MHz, 5150-5875 MHz
- Peak Gain:
  - 1.2 dBi @ 2442 MHz
  - 4.7 dBi @ 5513 MHz
- VSWR: < 3.5:1
- Return loss: < -5.0 dB
- Isolation : < -20 dB
- Polarization: Linear
- Power Handling: 10 Watt cw
- Size: 144.0 mm x 34.0 mm x 6.10 mm
- Weight: < 14.0g
- Keep Out Area: See diagram on page2
- Mounting: Screw. See diagram on page2
- Operating Temperature: -40° to 85°C
- Storage Temperature: -40° to 85°C

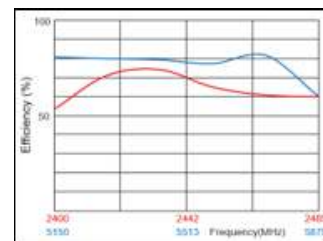
### VSWR:



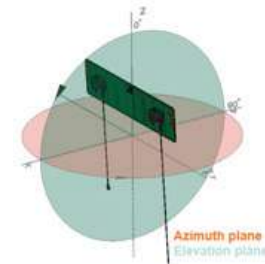
### RETURN LOSS:



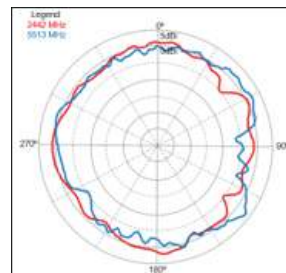
### EFFICIENCY:



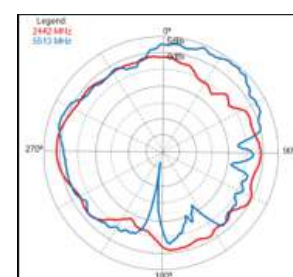
### TEST ORIENTATION IN FREE SPACE:



### AZIMUTH:



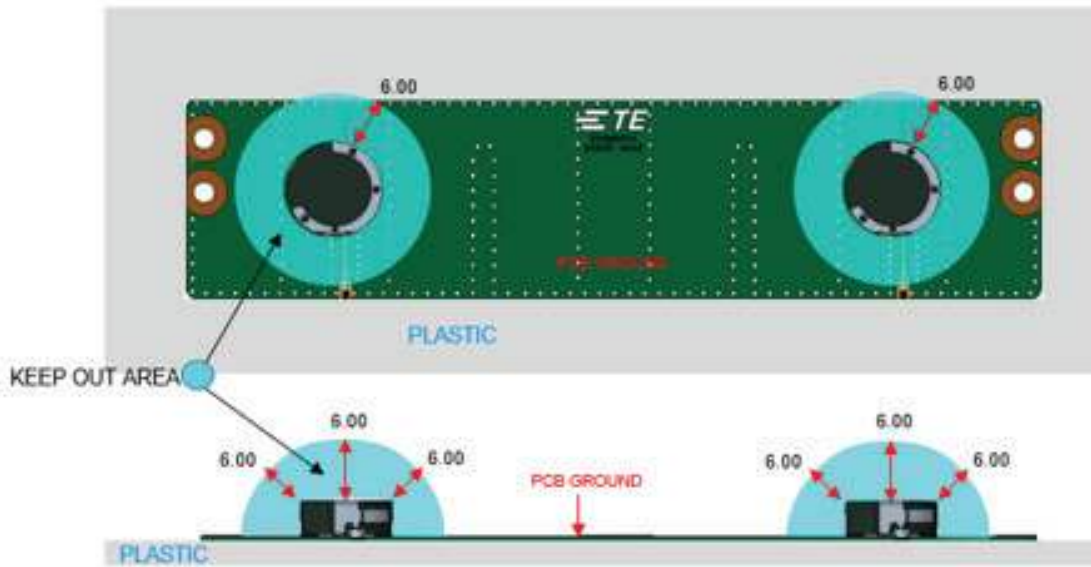
### ELEVATION:



# 2400-2483.5 MHz & 5150-5875 MHz MIMO 2X2 Dual Band Cabled Antenna

Standard Antenna Solutions

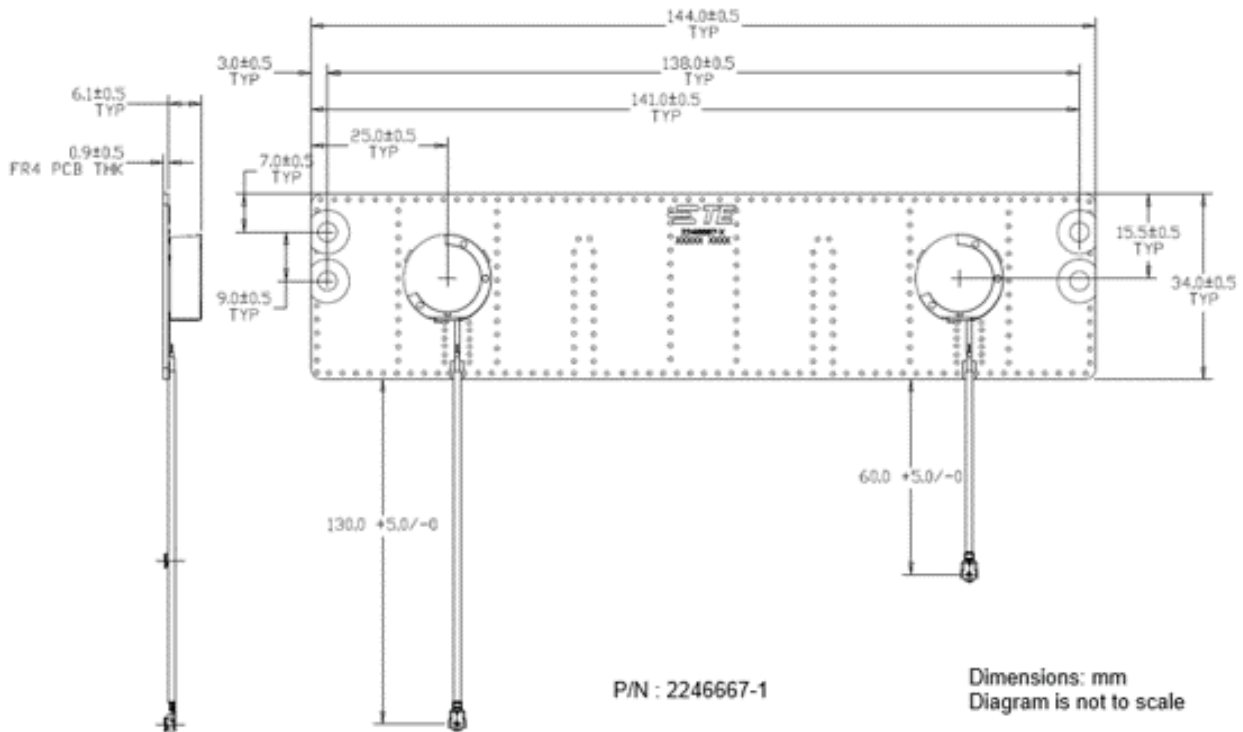
## KEEP OUT AREA:



- NOTES: 1. Antenna designed to be mounted on plastic cover.  
2. Area in blue above indicates Keep Out Area.  
3. For more information please call TE.

Dimensions: mm  
Diagram is not to scale

## APPROXIMATE DIMENSIONS:



# 2400-2483.5 MHz & 5150-5875 MHz MIMO 2X2 Dual Band Cabled Antenna

Standard Antenna Solutions

## TE TECHNICAL SUPPORT CENTER

USA:	+1 (800) 522-6752
Canada:	+1 (905) 475-6222
Mexico:	+52 (0) 55-1106-0800
Latin/S. America	+54 (0) 11-4733-2200
Germany:	+49 (0) 6251-133-1999
UK:	+44 (0) 800-267666
France:	+33 (0) 1-3420-8686
Netherlands:	+31 (0) 73-6246-999
China:	+86 (0) 400-820-6015

For phone numbers in other countries, go to [te.com/support-center](http://te.com/support-center)

## te.com

TE Connectivity, TE Connectivity (logo) and Every Connection Counts are trademarks. All other logos, products and/or company names referred to herein might be trademarks of their respective owners.

The information given herein, including drawings, illustrations and schematics which are intended for illustration purposes only, is believed to be reliable. However, TE Connectivity makes no warranties as to its accuracy or completeness and disclaims any liability in connection with its use. TE Connectivity's obligations shall only be as set forth in TE Connectivity's Standard Terms and Conditions of Sale for this product and in no case will TE Connectivity be liable for any incidental, indirect or consequential damages arising out of the sale, resale, use or misuse of the product. Users of TE Connectivity products should make their own evaluation to determine the suitability of each such product for the specific application.

© 2020 TE Connectivity Ltd. family of companies All Rights Reserved.

9-1773982-3 01/20 Original