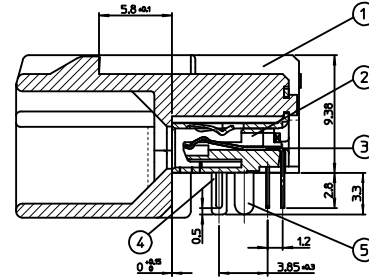
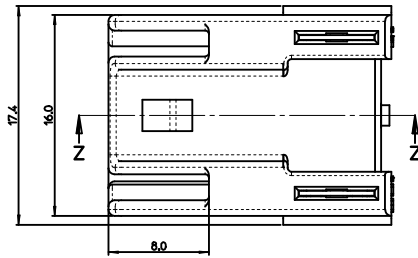
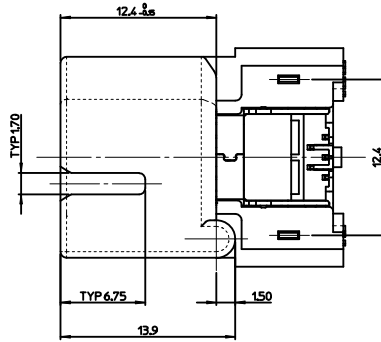
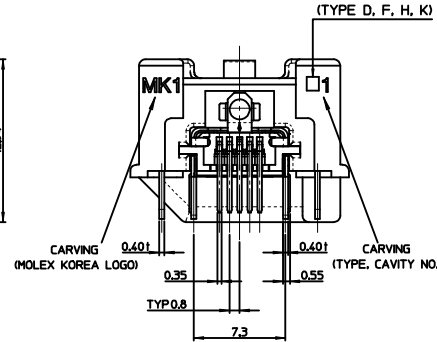
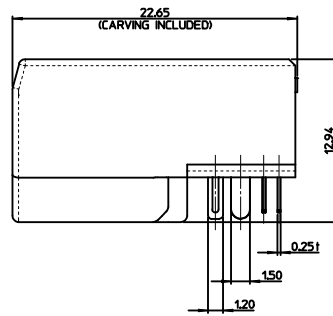
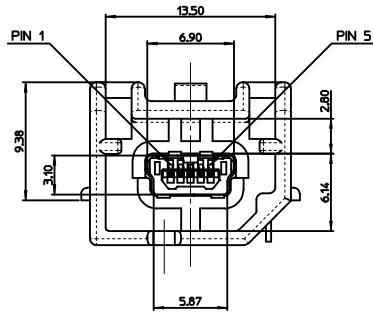


ISOMETRIC VIEW

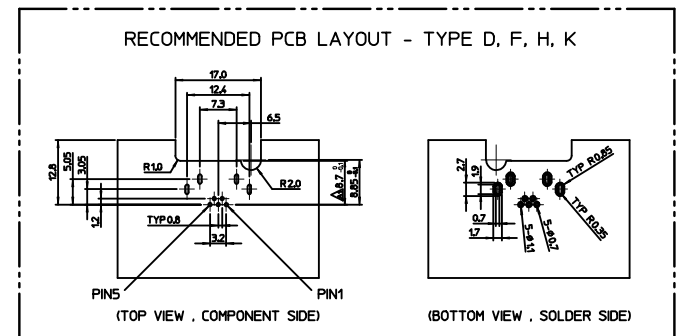
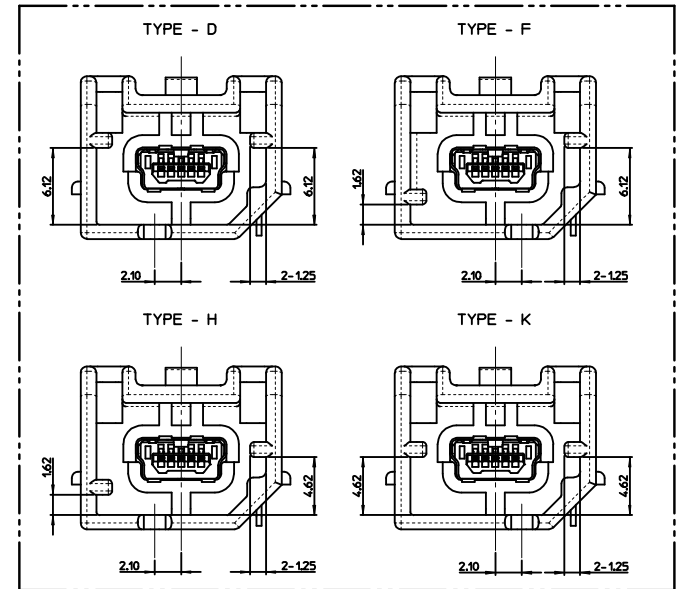


SECTION Z-Z



<PART LIST>

NO.	PART NAME	MATERIALS
①	SHROUD - D, F, H, K	LCP, glass-filled, UL94 V-0
②	REC. HOUSING	LCP, glass-filled, UL94 V-0
③	TERMINAL	COPPER ALLOY
④	SHIELD CASE	PHOSPHOR BRONZE
⑤	FITTING NAIL	BRASS



- NOTE
- MATES WITH :
(MOLEX SERIES NO. : 111014, 111015, 111005, 111041, 111019, 111020)
 - SHROUD GEOMETRY AND ASSEMBLY WITH USB MINI-B CONNECTOR ARE ACCORDING TO USCAR STD 999-U-USB-Z01
 - FINISHES
 - TERMINAL :
CONTACT AREA : GOLD 0.75μm MIN.
SOLDER TAIL AREA : TIN 3.84μm MIN.
UNDER PLATING : NI 1.25μm MIN.
 - SHIELD CASE :
3.04μm MIN. TIN OVER NI 1.04μm MIN.
 - FITTING NAIL :
3.04μm MIN. TIN OVER NI 1.04μm MIN.
 - UNLESS OTHERWISE SPECIFIED, TYPICAL RECOMMENDED PCB MANUFACTURING TOLERANCE IS ±0.05
 - PACKAGING IS TRAY :
(48 PCS/TRAY, 5 TRAY/TRAY BOX, 240 PCS/TRAY BOX, 960 PCS/CARTON BOX)
 - PRODUCT SPECIFICATION : PS-49616-001
 - PACKAGING INFORMATION : PK-49616-001
 - PCB THICKNESS : 1.6mm(REFERENCE)

<TABLE 1>

MATERIAL NO.	ORDER NO.	REMARKS	COLOR
1040260515	104026-0515	TYPE-D	GRAY
1040260525	104026-0525	TYPE-F	
1040260535	104026-0535	TYPE-H	
1040260545	104026-0545	TYPE-K	

CHANGED PCB LAYOUT EEC NO: K1R2013-0029 2013/02/28 DRWN:HHOON CHK:KBCYOON APPR:YCHOI 2013/04/12	QUALITY SYMBOLS ▽=0 ▽=0	GENERAL TOLERANCES (UNLESS SPECIFIED)	DIMENSION STYLE MM ONLY	SCALE 5:1	DESIGN UNITS METRIC	THIRD ANGLE PROJECTION
		4 PLACES ± --- ± ---	DRAWN BY HTSONG	DATE 2008/12/22	TITLE HSAUTOLINK R/A HEADER TYPE-D, F, H, K	
		3 PLACES ± --- ± ---	CHECKED BY BCYOON	DATE 2008/12/22	MOLEX INCORPORATED	
		2 PLACES ± 0.15 ± ---	APPROVED BY EHJUNG	DATE 2008/12/22	DOCUMENT NO. SD-104026-004	
1 PLACE ± 0.25 ± ---	MATERIAL NO.	SEE TABLE 1	SHEET NO. 1 OF 1			
ANGULAR ± 3°		THIS DRAWING CONTAINS INFORMATION THAT IS PROPRIETARY TO MOLEX INCORPORATED AND SHOULD NOT BE USED WITHOUT WRITTEN PERMISSION				
DRAFT WHERE APPLICABLE MUST REMAIN WITHIN DIMENSIONS						