

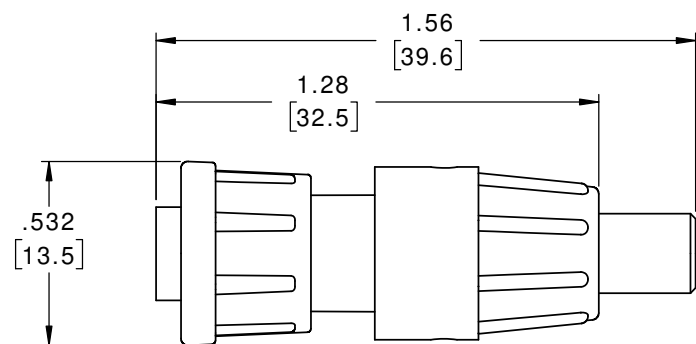
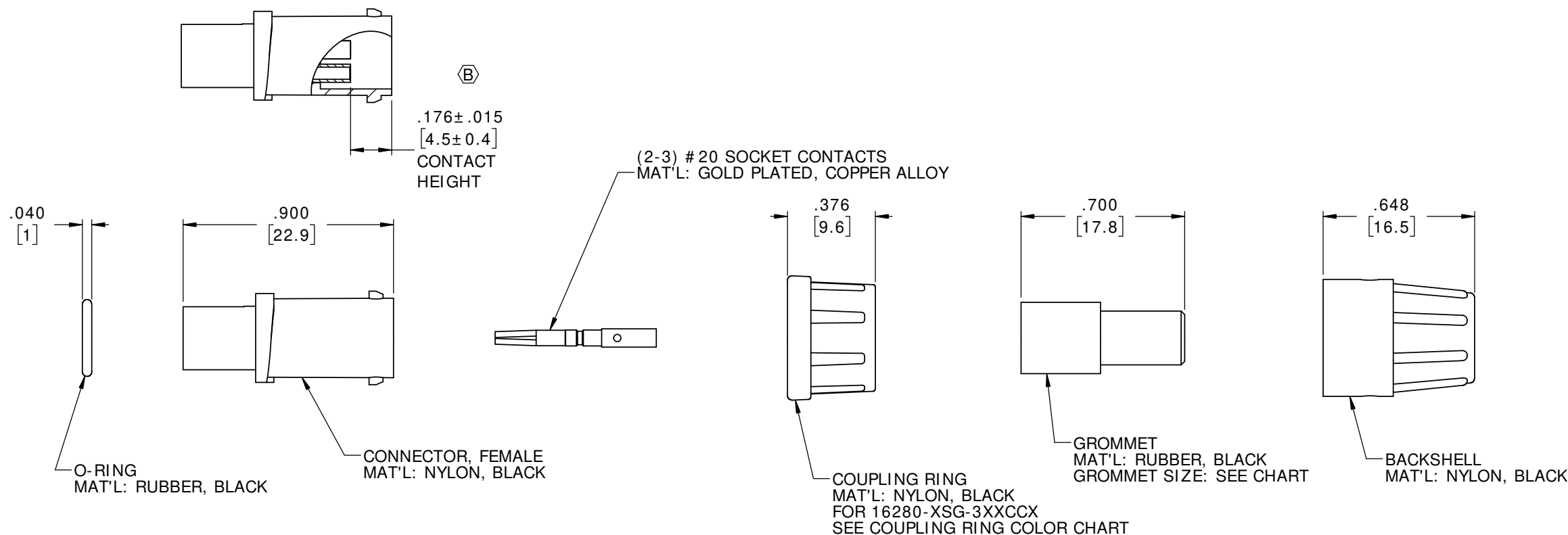
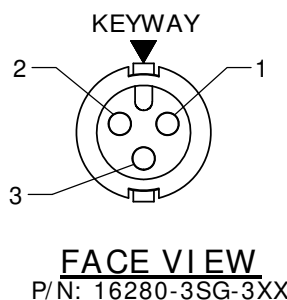
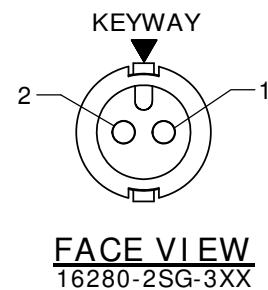
- NOTES:
 1. ALL PARTS TO BE BULK PACKED
 2. CONTACTS ARE SUPPLIED UNASSEMBLED
 3. SEE DRAWING HPMCSTD FOR HOLE PATTERN
 4. ALL DIMENSIONS ARE REFERENCE EXCEPT THOSE WITH A TOLERANCE

ASS'Y P/N	COUP. RING COLOR
16280-XSG-3XXCC1	WHITE
16280-XSG-3XXCC2	RED
16280-XSG-3XXCC3	BLUE
16280-XSG-3XXCC4	LIGHT GREY
16280-XSG-3XXCC5	YELLOW
16280-XSG-3XXCC6	MAROON
16280-XSG-3XXCC7	GREEN

KIT P/N	FOR CABLE O.D.
16280-XSG-311	.09-.14 [2.3-3.5]
16280-XSG-315	.15-.17 [3.8-4.3]
16280-XSG-318	.18-.20 [4.6-5.1]

KIT P/N	NO. OD CONTACTS
16280-2SG-3XX	2
16280-3SG-3XX	3
16280-XSG-3XX	

GROMMET SIZE
 NO. OF CONTACTS



ASSEMBLED VIEW
FOR CUSTOMER REF. ONLY

DIMENSIONS IN BRACKETS [] ARE IN MILLIMETERS UNLESS INDICATED

CUSTOMER APPROVAL

THIS DOCUMENT CONTAINS CONFIDENTIAL INFORMATION PROPRIETARY TO CONXALL CORPORATION. ANY REPRODUCTION, DISCLOSURE, OR USE OF THIS DOCUMENT / INFORMATION IS EXPRESSLY PROHIBITED UNLESS AUTHORIZED IN WRITING BY CONXALL CORPORATION.

APPROVED BY: _____
 DATE: _____

REV.	INIT.	DATE	DESCRIPTION
B	MA	04-16-20	ADDED COLORED COUPLING RING CHART. ADDED CONTACT HEIGHT DRAWING PART NUMBER WAS 16280-XSG-3XX PER DOR 20-E149SL-10
A	AN	06-17-16	DRAWING CREATED PER DOR 16-E149SL #12

ALL INFORMATION ILLUSTRATED IS THE PROPERTY OF CONXALL CORPORATION. UNAUTHORIZED DUPLICATION OR DISTRIBUTION OF THIS DOCUMENT IS PROHIBITED.	ORIG. DRAWN BY: AN DATE: 06-17-16	 601 E. WILDWOOD VILLA PARK, IL 60181
ALL UNITS ARE IN FEET, INCHES, FRACTION OF INCHES AND DECIMALS.	CHECKED BY:	
APPROVED BY:	SCALE: NTS SIZE: B SHEET: 1 OF 1	TITLE: CONNECTOR KIT (2-3) #20 SOCKET CONTACTS MICRO-CON-X STANDARD PRODUCT
FILE: 16280-XSG-3XX(CCX)	DIRECTORY: SLW	CUSTOMER: 16280-XSG-3XX(CCX)

RoHS COMPLIANT

- CRITICAL CHARACTERISTIC FLAG PER SPEC. XXXX