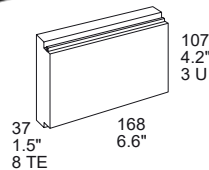
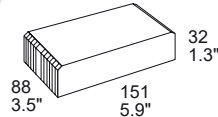




# PSC/PSL Series

## Positive Switching Regulators



The PSC and PSL Series positive switching regulators are designed as power supplies for electronic systems, where no input-to-output isolation is required. Their major advantages include a high level of efficiency, high reliability, low output ripple, and excellent dynamic response. Models with input voltages up to 144 V are specially designed for secondary switched and battery-driven mobile applications. The converters are suitable for railway applications according to EN 50155 and EN 50121. Two type of housings are available allowing operation up to 71 °C. The PSC Series is designed for wall or chassis mounting with faston connections, whereas the PSL Series is designed for insertion into a 19" DIN-rack and exhibits a H11 connector. Various options are available to adapt the converters to different applications.

### FEATURES

- RoHS lead-free-solder and lead-solder-exempted products are available
- 5 year warranty for RoHS compliant products with an extended temperature range
- Input voltage up to 144 VDC
- Single output of 3.3 to 48 VDC
- No input-to-output isolation
- High efficiency up to 97%
- Extremely wide input voltage range
- Low input-to-output differential voltage
- Very good dynamic properties
- Input undervoltage lockout
- Output voltage adjustment and inhibit function
- Continuously no-load and short-circuit proof
- All boards are coated with a protective lacquer
- Safety-approved to the latest edition of IEC/EN 62368-1 and CSA 60950-1



### Table of Contents

|                             |    |
|-----------------------------|----|
| Description.....            | 1  |
| Model Selection.....        | 2  |
| Functional Description..... | 5  |
| Electrical Input Data.....  | 6  |
| Electrical Output Data..... | 8  |
| Auxiliary Functions.....    | 12 |

|   |    |
|---|----|
| Electromagnetic Compatibility (EMC).....  | 13 |
| Immunity to Environmental Conditions..... | 15 |
| Mechanical Data.....                      | 16 |
| Safety and Installation Instructions..... | 17 |
| Description of Options.....               | 19 |
| Accessories.....                          | 21 |

## MODEL SELECTION

Table 1: PSC Series

| Output voltage<br>$V_{o,nom}$ [V] | Output current<br>$I_{o,nom}$ [A] | Operating input voltage range<br>$V_i$ [V] | Nom. input voltage<br>$V_{o,nom}$ [V] | Efficiency <sup>2</sup> |                  | Type designation        | Options               |
|-----------------------------------|-----------------------------------|--|---------------------------------------|-------------------------|------------------|-------------------------|-----------------------|
|                                   |                                   |  |                                       | $\eta_{min}$ [%]        | $\eta_{typ}$ [%] |                         |                       |
| 5.1                               | 10                                | 8 - 80                                     | 40                                    | 77.5                    | 79               | PSC5A10-9iRG            | -7, L, C, D, non-G    |
| 5.1                               | 11                                | 8 - 40                                     | 20                                    | 78                      | 79               | PSC5A11-2 <sup>3</sup>  | ---                   |
| 5.1                               | 12                                | 7 - 40                                     | 20                                    | 83.5                    | 85.5             | PSC5A12-9iRG            | -7, L, P, C, D, non-G |
| 12                                | 6                                 | 18 - 144 <sup>1</sup>                      | 60                                    | 88                      | 89               | PSC126-9iRG             | -7, L, C, D, non-G    |
| 12                                | 8                                 | 15 - 80                                    | 40                                    | 91                      | 93               | PSC128-9iRG             | -7, L, P, C, D, non-G |
| 12                                | 9                                 | 15 - 40                                    | 30                                    | 89                      | 90               | PSC129-2iR <sup>4</sup> | ---                   |
| 15                                | 6                                 | 22 - 144 <sup>1</sup>                      | 60                                    | 89                      | 91               | PSC156-9iRG             | L, C, D,              |
| 15                                | 8                                 | 19 - 80                                    | 40                                    | 90                      | 92.5             | PSC158-9iRG             | -7, L, P, C, D, non-G |
| 15                                | 9                                 | 19 - 40                                    | 30                                    | 91                      | 93.5             | PSC159-2iR <sup>5</sup> | ---                   |
| 24                                | 6                                 | 31 - 144 <sup>1</sup>                      | 60                                    | 93                      | 94               | PSC246-9iRG             | -7, L, P, C, D, non-G |
| 24                                | 8                                 | 29 - 80                                    | 40                                    | 93                      | 95               | PSC248-9iRG             | -7, L, P, C, D, non-G |
| 24                                | 9                                 | 29 - 60                                    | 40                                    | 94                      | 96               | PSC249-2iR <sup>6</sup> | ---                   |
| 36                                | 6                                 | 44 - 144 <sup>1</sup>                      | 80                                    | 95                      | 96               | PSC366-9iRG             | -7, L, P, C, D, non-G |
| 36                                | 8                                 | 42 - 80                                    | 60                                    | 95                      | 96.6             | PSC368-9iRG             | -7, L, P, C, D, non-G |
| 48                                | 6                                 | 58 - 144 <sup>1</sup>                      | 80                                    | 96                      | 97               | PSC486-9iRG             | -7, L, P, C, D, non-G |

<sup>1</sup> Surges up to 156 V for 2 s; see *Electrical Input Data*

<sup>2</sup> Efficiency at  $V_{i,nom}$  and  $I_{o,nom}$

<sup>3</sup> Obsolete. Use PSCA12-9iRG !

<sup>4</sup> Obsolete. Use PSC128-9LiRG !

<sup>5</sup> Obsolete. Use PSC158-9LiRG !

<sup>6</sup> Obsolete. Use PSC248-9LiRG !

Table 2: PSL Series

| Output voltage<br>$V_{o,nom}$ [V] | Output current<br>$I_{o,nom}$ [A] | Operating input voltage range<br>$V_i$ [V] | Nom. input voltage<br>$V_{o,nom}$ [V] | Efficiency <sup>2</sup> |                  | Type designation | Options            |
|-----------------------------------|-----------------------------------|--|---------------------------------------|-------------------------|------------------|------------------|--------------------|
|                                   |                                   |  |                                       | $\eta_{min}$ [%]        | $\eta_{max}$ [%] |                  |                    |
| 5.1                               | 10                                | 8 - 80                                     | 40                                    | 77.5                    | 79               | PSL5A10-9RG      | -7, L, i, C, non-G |
| 5.1                               | 12                                | 7 - 40                                     | 20                                    | 83.5                    | 85.5             | PSL5A12-9RG      | -7, L, C, non-G    |
| 12                                | 6                                 | 18 - 144 <sup>1</sup>                      | 60                                    | 88                      | 89               | PSL126-9RG       | -7, L, C, non-G    |
| 12                                | 8                                 | 15 - 80                                    | 40                                    | 89                      | 90               | PSL128-9RG       | L, C               |
| 15                                | 6                                 | 22 - 144 <sup>1</sup>                      | 60                                    | 89                      | 91               | PSL156-9RG       | L, C               |
| 15                                | 8                                 | 19 - 80                                    | 40                                    | 90                      | 92.5             | PSL158-9RG       | -7, L, i, C, non-G |
| 24                                | 6                                 | 31 - 144 <sup>1</sup>                      | 60                                    | 93                      | 94               | PSL246-9RG       | -7, L, C, non-G    |
| 24                                | 8                                 | 29 - 80                                    | 40                                    | 93                      | 95               | PSL248-9RG       | -7, L, C, K, non-G |
| 36                                | 6                                 | 44 - 144 <sup>1</sup>                      | 80                                    | 95                      | 96               | PSL366-9RG       | -7, L, C, non-G    |
| 36                                | 8                                 | 42 - 80                                    | 60                                    | 95                      | 96.6             | PSL368-9RG       | -7, L, C, non-G    |
| 48                                | 6                                 | 58 - 144 <sup>1</sup>                      | 80                                    | 96                      | 97               | PSL486-9RG       | -7, L, non-G       |

<sup>1</sup> Surges up to 156 V for 2 s; see *Electrical Input Data*

<sup>2</sup> Efficiency at  $V_{i,nom}$  and  $I_{o,nom}$

NFND: Not for new designs.

Preferred for new designs.

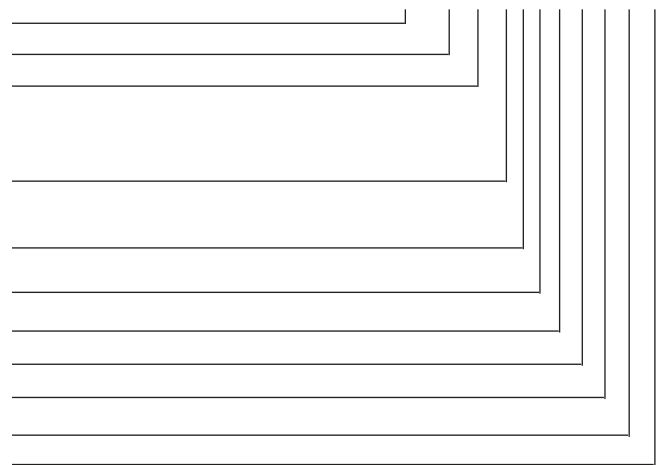


## Part Number Description

### PSC Series

|  |           |
|--|-----------|
| Positive switching regulator in case C03.....                  | PSC       |
| Nominal output voltage in volt .....                           | 3.3 to 48 |
| Nominal output current in ampere .....                         | 6 to 12   |
| Operational ambient temperature range $T_A$                    |           |
| -10 to 50 °C .....   | -2        |
| -25 to 71 °C (option) .....                                    | -7        |
| -40 to 71 °C .....   | -9        |
| Input filter (option) .....                                    | L         |
| Inhibit input .....  | i         |
| Control input for output voltage adjustment <sup>1</sup> ..... | R         |
| Potentiometer <sup>1</sup> (option) .....                      | P         |
| Thyristor crowbar (option) .....                               | C         |
| Input/output voltage monitor (option).....                     | D         |
| RoHS-compliant for all 6 substances .....                      | G         |

PSC 12 6 -7 L i R P C D G



<sup>1</sup> Feature R excludes option P and vice versa.

Example: PSC126-7LiPCG designates a positive switching regulator with a 12 V, 6 A output, ambient temperature range of -25 to 71 °C, input filter, inhibit input, output adjust potentiometer, thyristor crowbar, RoHS-compliant

### PSL Series

|  |           |
|--|-----------|
| Positive switching regulator in case C03.....                  | PSC       |
| Nominal output voltage in volt .....                           | 5.1 to 48 |
| Nominal output current in ampere .....                         | 6 to 12   |
| Operational ambient temperature range $T_A$                    |           |
| -10 to 50 °C .....   | -2        |
| -25 to 71 °C (option) .....                                    | -7        |
| -40 to 71 °C .....   | -9        |
| Input filter (option) .....                                    | L         |
| Inhibit input <sup>1</sup> .....                               | i         |
| Control input for output voltage adjustment <sup>1</sup> ..... | R         |
| Thyristor crowbar (option) .....                               | C         |
| Coding strip (option) .....                                    | K         |
| RoHS-compliant for all 6 substances .....                      | G         |

PSL 12 6 -7 L R C K G



<sup>1</sup> Feature R excludes option i and vice versa.

Example: PSL126-9LRCKG designates a positive switching regulator with a 12 V, 6 A output, ambient temperature range of -40 to 71 °C, input filter, output voltage adjust, and thyristor crowbar, RoHS-compliant.

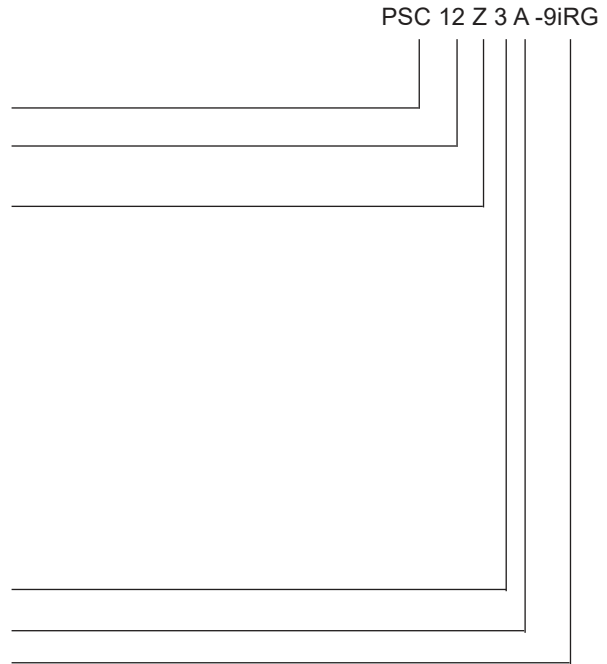
NFND: Not for new designs.

Preferred for new designs.



## Customer-Specific Models

|  |           |
|--|-----------|
| Positive switching regulator in case C03.....          | PSC       |
| Positive switching regulator in case L04 .....         | PSL       |
| Nominal output voltage in Volt (without decimals)..... | 12        |
| Decimal places:  |           |
| 0.0 V.....   | Z         |
| 0.1 V.....   | A         |
| 0.15 V.....  | B         |
| 0.2 V.....   | C         |
| 0.25 V.....  | D         |
| 0.3 V.....   | E         |
| 0.4 V.....   | F         |
| 0.5 V.....   | G         |
| 0.6 V.....   | H         |
| 0.7 V.....   | J         |
| 0.8 V.....   | K         |
| 0.9 V.....   | L         |
| other.....   | Y         |
| Output current in Amperes .....                        | 3         |
| Identification character .....                         | A, B, ... |
| Temperature range and options .....                    | -9iRG     |



## Product Marking

Type designation, applicable safety approval marks, warnings, pin allocation, patent nos., and company logo.

Identification of LED and optional potentiometers. Label with input voltage range, nominal output voltage and current, protection degree, batch no., serial no., and data code including production site, version (modification status), and date of production.

### FUNCTIONAL DESCRIPTION

The switching regulators are designed using the buck converter topology. The input is not electrically isolated from the output. During the on period of the switching transistor, current is transferred to the output, and energy is stored in the output choke. During the off period, this energy forces the current to continue flowing through the output, to the load, and back through the freewheeling diode. Regulation is accomplished by varying the duty cycle (on to off ratio) of the power switch. The regulator is equipped with an undervoltage lockout, but no overvoltage shutdown.

These regulators are ideal for a wide range of applications, where input to output isolation is not necessary, or where already provided by an external front end (e.g., a transformer with rectifier). To optimize customer's needs, additional options and accessories are available.

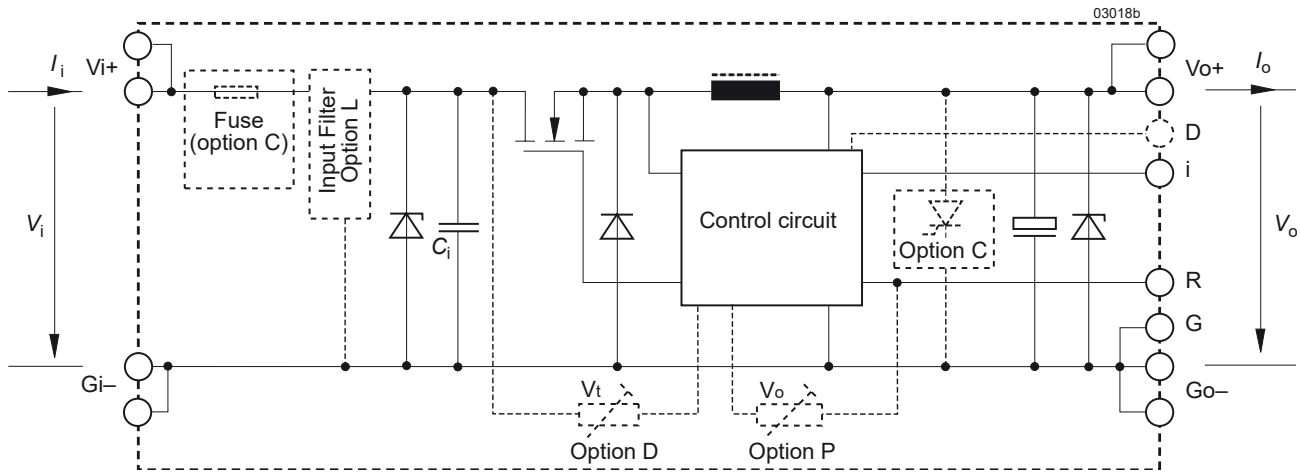


Fig. 1  
Block diagram PSC

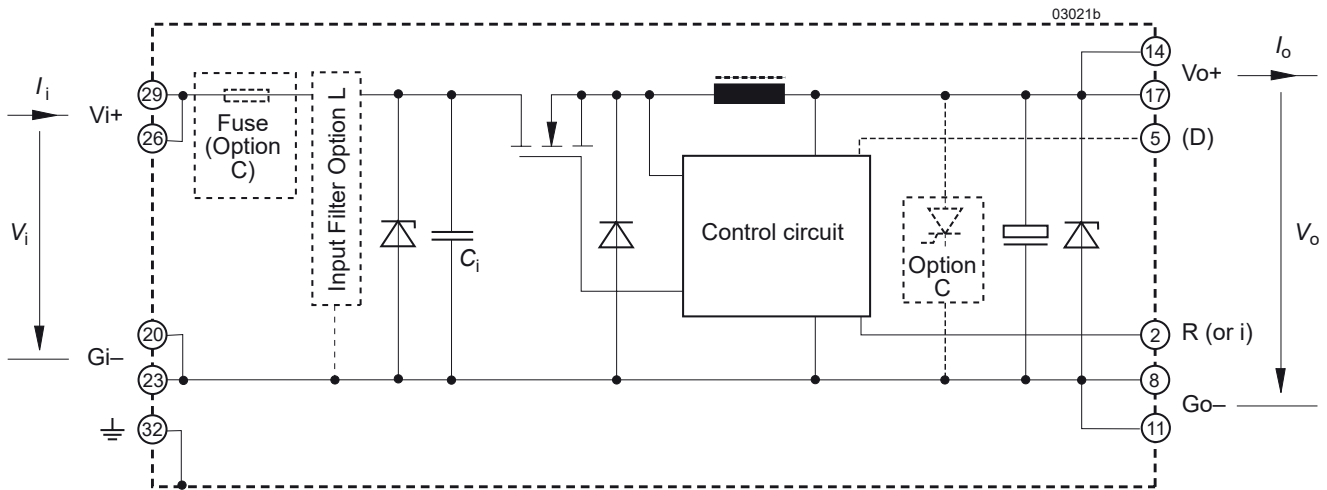


Fig. 2  
Block diagram PSL

## ELECTRICAL INPUT DATA

General Conditions:  $T_A = 25\text{ °C}$ , unless  $T_C$  is specified

Table 3a: Input data

| Model               |                                | PSC5A11-2  |  |     | PSC129-2 |     |     | PSC159-2 |     |     | PSC249-2 |     |     | Unit |       |    |
|---------------------|--------------------------------|--|--|-----|----------|-----|-----|----------|-----|-----|----------|-----|-----|------|-------|----|
| Characteristics     |                                | Conditions                                       |  | min | typ      | max | min | typ      | max | min | typ      | max |     |      |       |    |
| $V_i$               | Operating input voltage        | $I_o = 0 - I_{o,nom}$<br>$T_{C,min} - T_{C,max}$ |  | 8   | 40       |     | 15  | 40       |     | 19  | 40       |     | 29  | 60   | V     |    |
| $\Delta V_{io,min}$ | Min. diff. voltage $V_i - V_o$ |  |  |     |          |     | 2.9 |          |     |     |          | 4   |     |      |       | 5  |
| $V_{i,UVL}$         | Undervoltage lockout           |  |  |     |          |     | 7.3 |          |     |     |          | 7.3 |     |      |       | 12 |
| $I_o$               | No-load input current          | $I_o = 0, V_{i,min} - V_{i,max}$                 |  |     |          | 50  |     |          | 50  |     |          |     | 50  |      | mA    |    |
| $I_{in,p}$          | Inrush peak current            | $V_{i,nom}$                                      |  |     |          | 150 |     |          | 150 |     |          |     | 250 |      | A     |    |
| $t_{in,r}$          | Inrush current rise time       | $V_{i,nom}$                                      |  |     |          | 5   |     |          | 5   |     |          |     | 5   |      | µs    |    |
| $V_{i,RFI}$         | EN 55011, 0.15 - 30 MHz        | $V_{i,nom}, I_{o,nom}$                           |  |     |          | A   |     |          | A   |     |          |     | A   |      | Class |    |

Table 3b: Input data

| Model               |                                | PSC5A12 / PSL5A12                                |                |     | PSC5A10 / PSL5A10 |                |     | PSC128 / PSL128 |                |     | Unit |     |                |    |       |
|---------------------|--------------------------------|--|----------------|-----|-------------------|----------------|-----|-----------------|----------------|-----|------|-----|----------------|----|-------|
| Characteristics     |                                | Conditions                                       |                | min | typ               | max            | min | typ             | max            | min |      | typ | max            |    |       |
| $V_i$               | Operating input voltage        | $I_o = 0 - I_{o,nom}$<br>$T_{C,min} - T_{C,max}$ |                | 7   | 40                |                | 8   | 80              |                | 15  | 80   |     | V              |    |       |
| $\Delta V_{io,min}$ | Min. diff. voltage $V_i - V_o$ |  |                |     |                   |                | 1.9 |                 |                |     | 2.9  |     |                |    | 3     |
| $V_{i,UVL}$         | Undervoltage lockout           |  |                |     |                   |                | 6.3 |                 |                |     | 7.3  |     |                |    | 7.3   |
| $I_o$               | No-load input current          | $I_o = 0, V_{i,min} - V_{i,max}$                 |                |     |                   | 45             |     |                 | 40             |     |      |     | 35             |    | mA    |
| $I_{in,p}$          | Inrush peak current            | $V_{i,nom}$                                      | without opt. L |     |                   | 150            |     |                 | 250            |     |      |     | 250            | A  |       |
|                     |                                |  | with opt. L    |     |                   | 250            |     |                 | 350            |     |      |     | 350            |    |       |
| $t_{in,r}$          | Inrush current rise time       | $V_{i,nom}$                                      | without opt. L |     |                   | 5              |     |                 | 5              |     |      |     | 5              | µs |       |
|                     |                                |  | with opt. L    |     |                   | 25             |     |                 | 25             |     |      |     | 25             |    |       |
| $V_{i,RFI}$         | EN 55011, 0.15 - 30 MHz        | $V_{i,nom}, I_{o,nom}$                           |                |     |                   | B <sup>1</sup> |     |                 | B <sup>1</sup> |     |      |     | B <sup>1</sup> |    | Class |

Table 3c: Input data

| Model               |                                | PSC158 / PSL158                                  |                |     | PSC248 / PSL248 |                |     | PSC368 / PSL368 |                |     | Unit |     |                |    |       |
|---------------------|--------------------------------|--|----------------|-----|-----------------|----------------|-----|-----------------|----------------|-----|------|-----|----------------|----|-------|
| Characteristics     |                                | Conditions                                       |                | min | typ             | max            | min | typ             | max            | min |      | typ | max            |    |       |
| $V_i$               | Operating input voltage        | $I_o = 0 - I_{o,nom}$<br>$T_{C,min} - T_{C,max}$ |                | 19  | 80              |                | 29  | 80              |                | 42  | 80   |     | V              |    |       |
| $\Delta V_{io,min}$ | Min. diff. voltage $V_i - V_o$ |  |                |     |                 |                | 4   |                 |                | 5   |      |     |                | 6  |       |
| $V_{i,UVL}$         | Undervoltage lockout           |  |                |     |                 |                | 7.3 |                 |                | 12  |      |     |                | 19 |       |
| $I_o$               | No-load input current          | $I_o = 0, V_{i,min} - V_{i,max}$                 |                |     |                 | 35             |     |                 | 35             |     |      |     | 40             |    | mA    |
| $I_{in,p}$          | Inrush peak current            | $V_{i,nom}$                                      | without opt. L |     |                 | 250            |     |                 | 250            |     |      |     | 250            | A  |       |
|                     |                                |  | with opt. L    |     |                 | 350            |     |                 | 350            |     |      |     | 350            |    |       |
| $t_{in,r}$          | Inrush current rise time       | $V_{i,nom}$                                      | without opt. L |     |                 | 5              |     |                 | 5              |     |      |     | 5              | µs |       |
|                     |                                |  | with opt. L    |     |                 | 25             |     |                 | 25             |     |      |     | 25             |    |       |
| $V_{i,RFI}$         | EN 55011, 0.15 - 30 MHz        | $V_{i,nom}, I_{o,nom}$                           |                |     |                 | B <sup>1</sup> |     |                 | B <sup>1</sup> |     |      |     | B <sup>1</sup> |    | Class |

<sup>1</sup> With option L and an additional external input cap  $C_{ext} = 120\text{ µF}/100\text{ V}$ , e.g., Nichicon or similar

Table 3d: Input data

| Model               |                                |  | PSC126 / PSL126 |     |                  | PSC156 / PSL156 |     |                  | PSC246 / PSL246 |     |                  | Unit    |
|---------------------|--------------------------------|--|-----------------|-----|------------------|-----------------|-----|------------------|-----------------|-----|------------------|---------|
| Characteristics     |                                | Conditions   | min             | typ | max              | min             | typ | max              | min             | typ | max              |         |
| $V_i$               | Operating input voltage        | $I_o = 0 - I_{o,nom}^1$<br>$T_{C,min} - T_{C,max}$ | 18              |     | 144 <sup>2</sup> | 22              |     | 144 <sup>2</sup> | 31              |     | 144 <sup>2</sup> | V       |
| $\Delta V_{io,min}$ | Min. diff. voltage $V_i - V_o$ |  |                 |     | 6                |                 |     | 7                |                 |     | 7                |         |
| $V_{i,UVL}$         | Undervoltage lockout           |  |                 |     | 12               |                 |     | 15               |                 |     | 19               |         |
| $I_{i0}$            | No-load input current          | $I_o = 0, V_{i,min} - V_{i,max}$                   |                 |     | 35               |                 |     | 35               |                 |     | 35               | mA      |
| $I_{inr,p}$         | Inrush peak current            | $V_{i,nom}$  | without opt. L  |     | 250              |                 |     | 250              |                 |     | 250              | A       |
|                     |                                |  | with opt. L     |     | 350              |                 |     | 350              |                 |     | 350              |         |
| $t_{inr,r}$         | Inrush current rise time       | $V_{i,nom}$  | without opt. L  |     | 5                |                 |     | 5                |                 |     | 5                | $\mu s$ |
|                     |                                |  | with opt. L     |     | 25               |                 |     | 25               |                 |     | 25               |         |
| $V_{i,RFI}$         | EN 55011, 0.15 - 30 MHz        | $V_{i,nom}, I_{o,nom}$                             |                 |     | B <sup>1</sup>   |                 |     | B <sup>1</sup>   |                 |     | B <sup>1</sup>   | Class   |

Table 3e: Input data

| Model               |                                |  | PSC366 / PSL366 |     |                  | PSC486 / PSL486 |     |                  | Unit    |
|---------------------|--------------------------------|--|-----------------|-----|------------------|-----------------|-----|------------------|---------|
| Characteristics     |                                | Conditions   | min             | typ | max              | min             | typ | max              |         |
| $V_i$               | Operating input voltage        | $I_o = 0 - I_{o,nom}^1$<br>$T_{C,min} - T_{C,max}$ | 44              |     | 144 <sup>2</sup> | 58              |     | 144 <sup>2</sup> | V       |
| $\Delta V_{io,min}$ | Min. diff. voltage $V_i - V_o$ |  |                 |     | 8                |                 |     | 10               |         |
| $V_{i,UVL}$         | Undervoltage lockout           |  |                 |     | 29               |                 |     | 40               |         |
| $I_{i0}$            | No-load input current          | $I_o = 0, V_{i,min} - V_{i,max}$                   |                 |     | 40               |                 |     | 45               | mA      |
| $I_{inr,p}$         | Inrush peak current            | $V_{i,nom}$  | without opt. L  |     | 250              |                 |     | 250              | A       |
|                     |                                |  | with opt. L     |     | 350              |                 |     | 350              |         |
| $t_{inr,r}$         | Inrush current rise time       | $V_{i,nom}$  | without opt. L  |     | 5                |                 |     | 5                | $\mu s$ |
|                     |                                |  | with opt. L     |     | 25               |                 |     | 25               |         |
| $V_{i,RFI}$         | EN 55011, 0.15 - 30 MHz        | $V_{i,nom}, I_{o,nom}$                             |                 |     | B <sup>1</sup>   |                 |     | B <sup>1</sup>   | Class   |

<sup>1</sup> With option L and an additional external input cap  $C_{ext} = 120 \mu F/100 V$ , e.g., Nichicon or similar

<sup>2</sup> Surges up to 156 V for 2 s

### External Input Circuitry

The sum of the lengths of the supply lines to the source or to the nearest capacitor  $\geq 100 \mu F$  (a + b) should not exceed 5 m, unless option L is fitted. This option is recommended in order to prevent power line oscillations and reduce superimposed interference voltages.

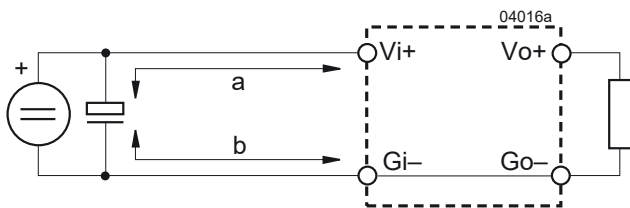


Fig. 3  
Switching regulator with long supply lines.

### ELECTRICAL OUTPUT DATA

General conditions:

–  $T_A = 25\text{ °C}$ , unless  $T_C$  is specified

– R-input open (or  $V_o$  set to  $V_{o\text{ nom}}$  with option P)

Table 4a: Output data

| Output          |  |                     | PSC5A11   |  |  | PSC129 |      |       | PSC159 |      |       | PSC249 |      |       | Unit |      |       |                  |
|-----------------|--|---------------------|---|--|--|--------|------|-------|--------|------|-------|--------|------|-------|------|------|-------|------------------|
| Characteristics |  |                     | Conditions  |  |  | min    | typ  | max   | min    | typ  | max   | min    | typ  | max   |      | min  | typ   | max              |
| $V_o$           | Output voltage   |                     | $V_{i\text{ nom}}, I_{o\text{ nom}}$  |  |  | 5.05   | 5.15 |       | 11.6   | 12.4 |       | 14.5   | 15.5 |       | 23.3 | 24.7 |       | V                |
| $I_o$           | Output current   |                     | $V_{i\text{ min}} - V_{i\text{ max}}$   |  |  | 0      |      | 11.0  | 0      |      | 9.0   | 0      |      | 9.0   | 0    |      | 9.0   | A                |
| $I_{oL}$        | Output current limitation  |                     | $T_{C\text{ min}} - T_{C\text{ max}}$   |  |  | 11.0   |      | 14.3  | 9.0    |      | 11.7  | 9.0    |      | 11.7  | 9.0  |      | 11.7  |                  |
| $V_o$           | Output voltage noise   | Switching frequency | $V_{i\text{ nom}}, I_{o\text{ nom}}$<br>IEC/EN 61204                          |  |  |        |      | 55    |        |      | 150   |        |      | 200   |      |      | 300   | mV <sub>pp</sub> |
|                 |  | Total               | BW = 20 MHz   |  |  |        |      | 60    |        |      | 160   |        |      | 210   |      |      | 210   |                  |
| $\Delta V_{oV}$ | Static line regulation   |                     | $V_{i\text{ min}} - V_{i\text{ max}}, I_{o\text{ nom}}$                       |  |  |        |      | 100   |        |      | 240   |        |      | 300   |      |      | 480   | mV               |
| $\Delta V_{oI}$ | Static load regulation   |                     | $V_{i\text{ nom}}, I_o = 0 - I_{o\text{ nom}}$                                |  |  |        |      | 100   |        |      | 120   |        |      | 150   |      |      | 240   |                  |
| $V_{oD}$        | Dynamic load regulation  | Voltage deviation   | $V_{i\text{ nom}}$<br>$I_{o\text{ nom}} \leftrightarrow 1/3 I_{o\text{ nom}}$ |  |  |        |      | 130   |        |      | 360   |        |      | 450   |      |      | 700   | μs               |
| $t_d$           |  | Recovery time       | IEC/EN 61204  |  |  |        |      | 50    |        |      | 60    |        |      | 60    |      |      | 80    |                  |
| $\alpha_{V_o}$  | Temperature coefficient<br>$\Delta V_o / \Delta T_C (T_{C\text{ min}} - T_{C\text{ max}})$ |                     | $V_{i\text{ min}} - V_{i\text{ max}}$<br>$I_o = 0 - I_{o\text{ nom}}$         |  |  |        |      | ±0.02 |        |      | ±0.02 |        |      | ±0.02 |      |      | ±0.02 | %/K              |

Table 4b: Output data

| Output          |  |                     | PSC5A12 / PSL5A12   |  |  | PSC5A10 / PSL5A10 |     |       | PSC128 / PSL128 |     |       | Unit  |     |       |                  |
|-----------------|--|---------------------|---|--|--|-------------------|-----|-------|-----------------|-----|-------|-------|-----|-------|------------------|
| Characteristics |  |                     | Conditions  |  |  | min               | typ | max   | min             | typ | max   |       | min | typ   | max              |
| $V_o$           | Output voltage   |                     | $V_{i\text{ nom}}, I_{o\text{ nom}}$  |  |  | 5.07              |     | 5.13  | 5.07            |     | 5.13  | 11.93 |     | 12.07 | V                |
| $I_o$           | Output current   |                     | $V_{i\text{ min}} - V_{i\text{ max}}$   |  |  | 0                 |     | 12.0  | 0               |     | 11.0  | 0     |     | 9.0   | A                |
| $I_{oL}$        | Output current limitation  |                     | $T_{C\text{ min}} - T_{C\text{ max}}$   |  |  | 12.0              |     | 15.6  | 11.0            |     | 14.3  | 9.0   |     | 11.7  |                  |
| $V_o$           | Output voltage noise   | Switching frequency | $V_{i\text{ nom}}, I_{o\text{ nom}}$<br>IEC/EN 61204                          |  |  |                   |     | 55    |                 |     | 55    |       |     | 150   | mV <sub>pp</sub> |
|                 |  | Total               | BW = 20 MHz   |  |  |                   |     | 60    |                 |     | 60    |       |     | 160   |                  |
| $\Delta V_{oV}$ | Static line regulation   |                     | $V_{i\text{ min}} - V_{i\text{ max}}, I_{o\text{ nom}}$                       |  |  |                   |     | 100   |                 |     | 100   |       |     | 240   | mV               |
| $\Delta V_{oI}$ | Static load regulation   |                     | $V_{i\text{ nom}}, I_o = 0 - I_{o\text{ nom}}$                                |  |  |                   |     | 100   |                 |     | 100   |       |     | 120   |                  |
| $V_{oD}$        | Dynamic load regulation  | Voltage deviation   | $V_{i\text{ nom}}$<br>$I_{o\text{ nom}} \leftrightarrow 1/3 I_{o\text{ nom}}$ |  |  |                   |     | 150   |                 |     | 130   |       |     | 360   | μs               |
| $t_d$           |  | Recovery time       | IEC/EN 61204  |  |  |                   |     | 50    |                 |     | 50    |       |     | 60    |                  |
| $\alpha_{V_o}$  | Temperature coefficient<br>$\Delta V_o / \Delta T_C (T_{C\text{ min}} - T_{C\text{ max}})$ |                     | $V_{i\text{ min}} - V_{i\text{ max}}$<br>$I_o = 0 - I_{o\text{ nom}}$         |  |  |                   |     | ±0.02 |                 |     | ±0.02 |       |     | ±0.02 | %/K              |



Table 4c: Output data. General conditions as per table 4a

| Output          |  |                     | PSC158 / PSL158  |     |     | PSC248 / PSL248 |     |       | PSC368 / PSL368 |     |       | Unit  |     |       |                  |
|-----------------|--|---------------------|--|-----|-----|-----------------|-----|-------|-----------------|-----|-------|-------|-----|-------|------------------|
| Characteristics |  | Conditions          | min  | typ | max | min             | typ | max   | min             | typ | max   |       |     |       |                  |
| $V_o$           | Output voltage   |                     | $V_{i\text{nom}}, I_{o\text{nom}}$   |     |     | 14.91           |     | 15.09 | 23.68           |     | 24.14 | 35.78 |     | 36.22 | V                |
| $I_o$           | Output current   |                     | $V_{i\text{min}} - V_{i\text{max}}$  |     |     | 0               |     | 8.0   | 0               |     | 8.0   | 0     |     | 8.0   | A                |
| $I_{oL}$        | Output current limitation  |                     | $T_{C\text{min}} - T_{C\text{max}}$  |     |     | 8.0             |     | 10.4  | 8.0             |     | 10.4  | 8.0   |     | 10.4  |                  |
| $V_o$           | Output voltage noise   | Switching frequency | $V_{i\text{nom}}, I_{o\text{nom}}$<br>IEC/EN 61204                         |     |     |                 | 50  | 90    |                 | 55  | 150   |       | 80  | 190   | mV <sub>pp</sub> |
|                 |  | Total               | BW = 20 MHz  |     |     |                 | 54  | 94    |                 | 60  | 155   |       | 85  | 195   |                  |
| $\Delta V_{oV}$ | Static line regulation   |                     | $V_{i\text{min}} - V_{i\text{max}}, I_{o\text{nom}}$                       |     |     |                 | 70  | 100   |                 | 150 | 220   |       | 200 | 270   | mV               |
| $\Delta V_{oI}$ | Static load regulation   |                     | $V_{i\text{nom}}, I_o = 0 - I_{o\text{nom}}$                               |     |     |                 | 30  | 45    |                 | 120 | 160   |       | 125 | 160   |                  |
| $V_{od}$        | Dynamic load regulation  | Voltage deviation   | $V_{i\text{nom}}$<br>$I_{o\text{nom}} \leftrightarrow 1/3 I_{o\text{nom}}$ |     |     |                 | 130 |       |                 | 150 |       |       | 220 |       | μs               |
| $t_d$           |  | Recovery time       | IEC/EN 61204   |     |     |                 | 60  |       |                 | 80  |       |       | 100 |       |                  |
| $\alpha_{Vo}$   | Temperature coefficient<br>$\Delta V_o / \Delta T_C (T_{C\text{min}} - T_{C\text{max}})$ |                     | $V_{i\text{min}} - V_{i\text{max}}$<br>$I_o = 0 - I_{o\text{nom}}$         |     |     |                 |     | ±0.02 |                 |     | ±0.02 |       |     | ±0.02 | %/K              |

Table 4d: Output data. General conditions as per table 4a

| Output          |  |                     | PSC126 / PSL126  |     |     | PSC156 / PSL156 |     |       | PSC246 / PSL246 |     |       | Unit  |     |       |                  |
|-----------------|--|---------------------|--|-----|-----|-----------------|-----|-------|-----------------|-----|-------|-------|-----|-------|------------------|
| Characteristics |  | Conditions          | min  | typ | max | min             | typ | max   | min             | typ | max   |       |     |       |                  |
| $V_o$           | Output voltage   |                     | $V_{i\text{nom}}, I_{o\text{nom}}$   |     |     | 11.93           |     | 12.07 | 14.91           |     | 15.09 | 23.86 |     | 24.14 | V                |
| $I_o$           | Output current   |                     | $V_{i\text{min}} - V_{i\text{max}}$  |     |     | 0               |     | 6.0   | 0               |     | 6.0   | 0     |     | 6.0   | A                |
| $I_{oL}$        | Output current limitation  |                     | $T_{C\text{min}} - T_{C\text{max}}$  |     |     | 6.0             |     | 7.8   | 6.0             |     | 7.8   | 6.0   |     | 7.8   |                  |
| $V_o$           | Output voltage noise   | Switching frequency | $V_{i\text{nom}}, I_{o\text{nom}}$<br>IEC/EN 61204                         |     |     |                 | 30  | 45    |                 | 50  | 70    |       | 50  | 70    | mV <sub>pp</sub> |
|                 |  | Total               | BW = 20 MHz  |     |     |                 | 34  | 49    |                 | 54  | 74    |       | 54  | 75    |                  |
| $\Delta V_{oV}$ | Static line regulation   |                     | $V_{i\text{min}} - V_{i\text{max}}, I_{o\text{nom}}$                       |     |     |                 | 25  | 40    |                 | 25  | 40    |       | 80  | 100   | mV               |
| $\Delta V_{oI}$ | Static load regulation   |                     | $V_{i\text{nom}}, I_o = 0 - I_{o\text{nom}}$                               |     |     |                 | 60  |       |                 | 60  |       |       | 80  |       |                  |
| $V_{od}$        | Dynamic load regulation  | Voltage deviation   | $V_{i\text{nom}}$<br>$I_{o\text{nom}} \leftrightarrow 1/3 I_{o\text{nom}}$ |     |     |                 | 150 |       |                 | 130 |       |       | 360 |       | μs               |
| $t_d$           |  | Recovery time       | IEC/EN 61204   |     |     |                 | 50  |       |                 | 50  |       |       | 60  |       |                  |
| $\alpha_{Vo}$   | Temperature coefficient<br>$\Delta V_o / \Delta T_C (T_{C\text{min}} - T_{C\text{max}})$ |                     | $V_{i\text{min}} - V_{i\text{max}}$<br>$I_o = 0 - I_{o\text{nom}}$         |     |     |                 |     | ±0.02 |                 |     | ±0.02 |       |     | ±0.02 | %/K              |

Table 4e: Output data. General conditions as per table 4a

| Output            |  | PSC366 / PSL366  |  |       | PSC486 / PSL486 |       |            | Unit          |                  |
|-------------------|--|--|--|-------|-----------------|-------|------------|---------------|------------------|
| Characteristics   |  | min  | typ  | max   | min             | typ   | max        |               |                  |
| $V_o$             | Output voltage   | $V_{i\text{nom}}, I_{o\text{nom}}$                                 |  | 35.78 | 36.22           | 47.71 | 48.29      | V             |                  |
| $I_{o\text{nom}}$ | Output current   | $V_{i\text{min}} - V_{i\text{max}}$                                |  | 0     | 6.0             | 0     | 6.0        | A             |                  |
| $I_{oL}$          | Output current limitation  | $T_{C\text{min}} - T_{C\text{max}}$                                |  | 6.0   | 7.8             | 6.0   | 7.8        |               |                  |
| $V_o$             | Output voltage noise   | Switching frequency  | $V_{i\text{nom}}, I_{o\text{nom}}$<br>IEC/EN 61204                         |       | 50              | 90    | 55         | 110           | mV <sub>pp</sub> |
|                   |  | Total  | BW = 20 MHz  |       | 54              | 94    | 95         | 115           |                  |
| $\Delta V_{oV}$   | Static line regulation   | $V_{i\text{min}} - V_{i\text{max}}, I_{o\text{nom}}$               |  | 200   | 300             | 100   | 200        | mV            |                  |
| $\Delta V_{oI}$   | Static load regulation   | $V_{i\text{nom}}, I_o = 0 - I_{o\text{nom}}$                       |  | 120   | 200             | 180   | 250        |               |                  |
| $V_{od}$          | Dynamic load regulation  | Voltage deviation  | $V_{i\text{nom}}$<br>$I_{o\text{nom}} \leftrightarrow 1/3 I_{o\text{nom}}$ |       | 140             |       | 150        |               |                  |
| $t_d$             |  | Recovery time  | IEC/EN 61204   |       | 100             |       | 100        | $\mu\text{s}$ |                  |
| $\alpha_{Vo}$     | Temperature coefficient<br>$\Delta V_o / \Delta T_C (T_{C\text{min}} - T_{C\text{max}})$ | $V_{i\text{min}} - V_{i\text{max}}$<br>$I_o = 0 - I_{o\text{nom}}$ |  |       | $\pm 0.02$      |       | $\pm 0.02$ | %/K           |                  |

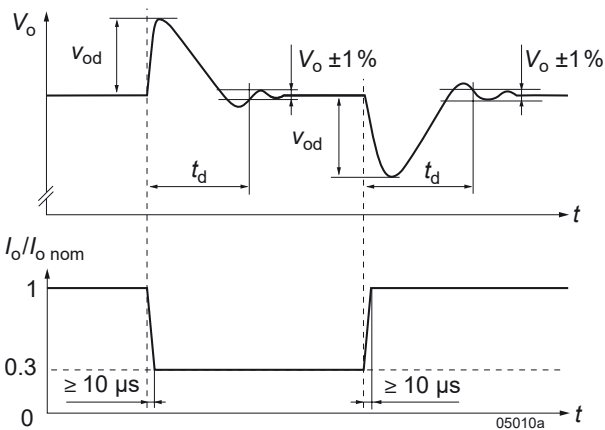


Fig. 4  
Switching regulator with long supply lines.

### Thermal Considerations

When a switching regulator is located in free, quasi-stationary air (convection cooling) at a temperature  $T_A = 71\text{ }^\circ\text{C}$  and is operated at  $I_{o\text{nom}}$ , the case temperature  $T_C$  will be about  $95\text{ }^\circ\text{C}$  after the warm-up phase, measured at the measuring point of case temperature  $T_C$ ; see *Mechanical Data*.

Under practical operating conditions, the ambient temperature  $T_A$  may exceed  $71\text{ }^\circ\text{C}$ , provided that additional measures (heat sink, fan, etc.) are taken to ensure that the case temperature  $T_C$  does not exceed its maximum value of  $95\text{ }^\circ\text{C}$ .

Example: Sufficient forced cooling allows  $T_{A\text{max}} = 85\text{ }^\circ\text{C}$ . A simple check of the case temperature  $T_C$  ( $T_C \leq 95\text{ }^\circ\text{C}$ ) at full load ensures correct operation of the system.

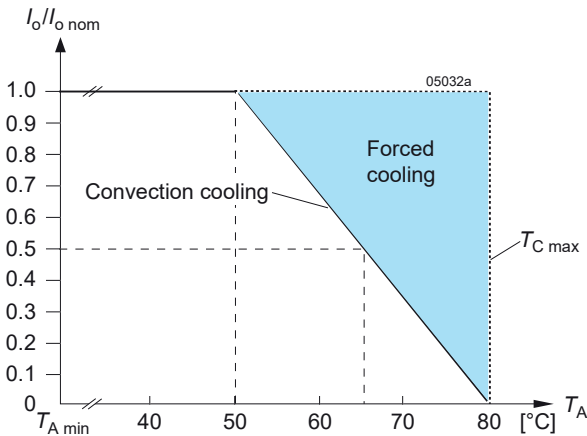


Fig. 5a  
Output current derating vs. temperature (models -2)

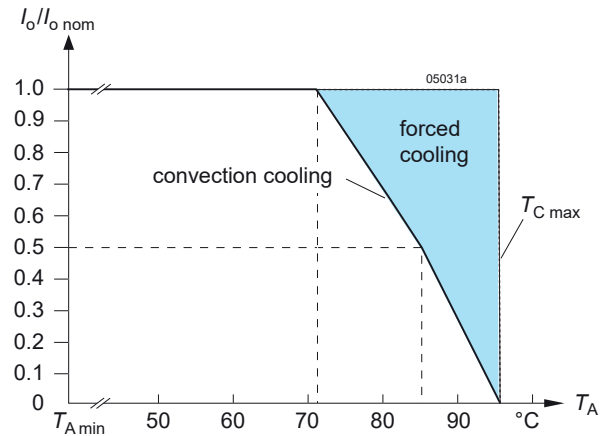


Fig. 5b  
Output current derating vs. temperature (models -7 and -9)

### Output Protection and Short Circuit Behaviour

A voltage suppressor diode, which in worst case conditions fails into a short circuit (or a thyristor crowbar, option C), protects the output against an internally generated over-voltage. Such an overvoltage could occur due to a failure of either the control circuit or the switching transistor. The output protection is not designed to withstand externally applied overvoltages.

A constant current limitation circuit holds the output current almost constant, when an overload or a short circuit is applied to the output. It acts self-protecting and recovers automatically after removal of the overload or short circuit condition.

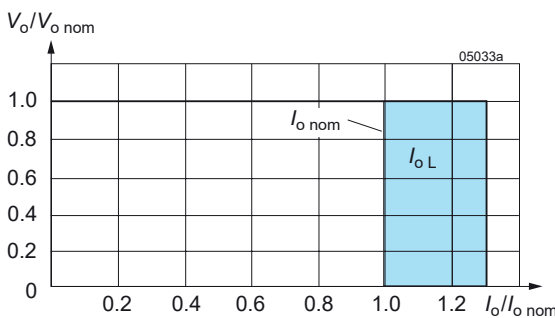


Fig. 6  
Overload, short-circuit behaviour  $V_o$  versus  $I_o$ .

### Parallel and Series Connection

Outputs of equal nominal voltages can be parallel-connected. However, the use of a single regulator with higher output power, is always the better solution.

In parallel-connected operation, one or several outputs may operate continuously at their current limit knee-point which will cause an increase of the heat generation. Consequently, the max. ambient temperature should be reduced by  $10\text{ }^\circ\text{C}$ .

Outputs can be series-connected with any other regulator. In series-connection the maximum output current is limited by the lowest current limitation, but electrically separated source voltages are needed for each regulator.

## AUXILIARY FUNCTIONS

### i Inhibit (Remote On / Off)

The inhibit input allows the switching regulator output to be disabled via a control signal. In systems with several converters, this feature can be used, for example, to control the activation sequence of the converters by a logic signal (TTL, C-MOS, etc.). An output voltage overshoot will not occur, when switching on or off.

**Note:** With open i-input, the output is enabled.

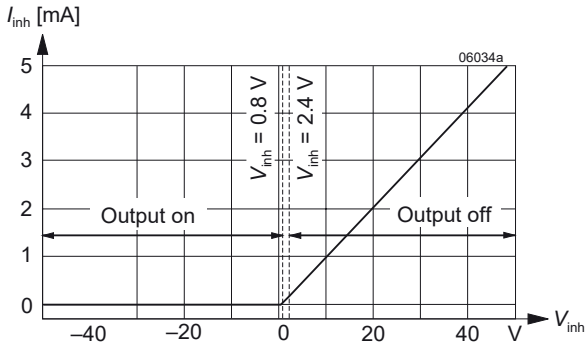


Fig. 7  
Typical inhibit current  $I_{inh}$  versus inhibit voltage  $V_{inh}$

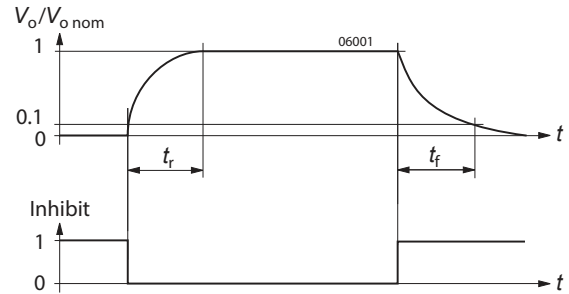


Fig. 8  
Output response as a function of inhibit signal

Table 4: Inhibit characteristics

| Characteristics |                              | Conditions                                    | min                       | typ  | max  | Unit |
|-----------------|------------------------------|---|---------------------------|------|------|------|
| $V_{inh}$       | Inhibit input voltage        | $V_o = \text{on}$                             | $V_{i \min}$              | -50  | +0.8 | V    |
|                 |                              | $V_o = \text{off}$                            | $T_{C \min} - T_{C \max}$ | +2.4 | +50  |      |
| $t_r$           | Switch-on time               | $V_i = V_{i \text{ nom}}$                     |                           | 130  |      | ms   |
| $t_f$           | Switch-off time              | $R_L = V_{o \text{ nom}} / I_{o \text{ nom}}$ |                           | 25   |      |      |
| $I_{inh}$       | Input current when inhibited | $V_i = V_{i \text{ nom}}$                     |                           | 25   |      | mA   |

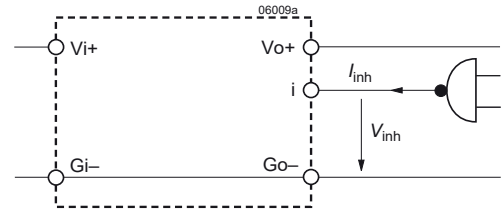


Fig. 89  
Definition of  $I_{inh}$  and  $V_{inh}$

### R Output Voltage Adjust

**Note:** With open R input,  $V_o \approx V_{o \text{ nom}}$ .

The output voltage  $V_o$  can either be adjusted with an external voltage source ( $V_{ext}$ ) or with an external resistor ( $R_{ext1}$  or  $R_{ext2}$ ). The adjustment range is 0 – 108% of  $V_{o \text{ nom}}$ . The minimum differential voltage  $\Delta V_{io \text{ min}}$  between input and output (see *Electrical Input Data*) should be maintained.

a)  $V_o = 0 - V_{o \text{ max}}$ , using  $V_{ext}$  between R and G (Go- for PSL):

$$V_{ext} \approx 2.5 \text{ V} \cdot \frac{V_o}{V_{o \text{ nom}}} \quad V_o \approx V_{o \text{ nom}} \cdot \frac{V_{ext}}{2.5 \text{ V}}$$

**Caution:** To prevent damage,  $V_{ext}$  should not exceed 20 V, nor be negative.

b)  $V_o = 0$  to  $V_{o \text{ nom}}$ , using  $R_{ext1}$  between R and G (Go- for PSL):

$$R_{ext1} \approx \frac{4000 \Omega \cdot V_o}{V_{o \text{ nom}} - V_o} \quad V_o \approx \frac{V_{o \text{ nom}} \cdot R_{ext1}}{R_{ext1} + 4000 \Omega}$$

c)  $V_o = V_{o \text{ nom}}$  to  $V_{o \text{ max}}$ , using  $R_{ext2}$  between R and G (Go- for PSL):

$$R_{ext2} \approx \frac{4000 \Omega \cdot V_o \cdot (V_{o \text{ nom}} - 2.5 \text{ V})}{2.5 \text{ V} \cdot (V_o - V_{o \text{ nom}})}$$

$$V_o \approx \frac{V_{o \text{ nom}} \cdot 2.5 \text{ V} \cdot R_{ext2}}{2.5 \text{ V} \cdot (R_{ext2} + 4000 \Omega) - V_{o \text{ nom}} \cdot 4000 \Omega}$$

**Caution:** To prevent damage,  $R_{ext2}$  should never be less than 47 k $\Omega$

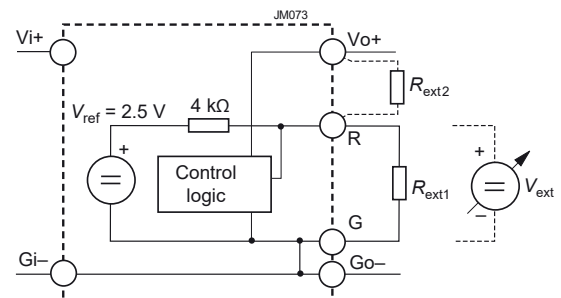


Fig. 10  
Voltage adjustment via R-input

### LED Output Voltage Indicator

An LED indicator (yellow for PSC, green for PSL) is illuminated, when the output voltage is higher than approx. 3 V.

## ELECTROMAGNETIC COMPATIBILITY (EMC)

### Electromagnetic Immunity

Table 6: Electromagnetic immunity type tests

| Phenomenon                         | Standard         | Level          | Coupling mode             | Value applied                    | Waveform  | Source imped. | Test procedure  | In oper. | Perf. crit. <sup>2</sup>         |
|------------------------------------|------------------|----------------|---------------------------|----------------------------------|---|---------------|---|----------|----------------------------------|
| Voltage surge <sup>3</sup>         | IEC 60571-1      | 3              | i/c, +i/-i                | 800 V <sub>p</sub>               | 100 μs  | 100 Ω         | 1 positive and 1 negative surge per coupling mode           | yes      | B                                |
|                                    |                  |                |                           | 1500 V <sub>p</sub>              | 50 μs   |               |   |          |                                  |
|                                    |                  |                |                           | 3000 V <sub>p</sub>              | 5 μs  |               |   |          |                                  |
|                                    |                  |                |                           | 4000 V <sub>p</sub>              | 1 μs  |               |   |          |                                  |
|                                    |                  |                |                           | 7000 V <sub>p</sub>              | 100 ns  |               |   |          |                                  |
| Electrostatic discharge            | IEC/EN 61000-4-2 | 4 <sup>3</sup> | contact discharge to case | 8000 V <sub>p</sub> <sup>3</sup> | 1/50 ns   | 330 Ω         | 10 pos. & 10 neg. discharges                                | yes      | A <sup>5</sup>                   |
|                                    |                  | 2 <sup>4</sup> |                           | 4000 V <sub>p</sub> <sup>4</sup> |   |               |   |          |                                  |
| Electromagnetic field              | IEC/EN 61000-4-3 | 3 <sup>3</sup> | antenna                   | 10 V/m <sup>3</sup>              | AM 80% / 1 kHz  | N/A           | 80 – 1000 MHz   | yes      | A                                |
|                                    |                  | 2 <sup>4</sup> |                           | 3 V/m <sup>4</sup>               |   |               |   |          |                                  |
| Electrical fast transients / burst | IEC/EN 61000-4-4 | 3              | i/c, +i/-i                | 2000 V <sub>p</sub>              | bursts of 5/50 ns; 5 kHz repet. rate; transients with 15 ms burst duration; 300 ms period | 50 Ω          | 60 s positive<br>60 s negative transients per coupling mode | yes      | A <sup>5</sup><br>B <sup>4</sup> |
| Surges                             | IEC/EN 61000-4-5 | 2 <sup>3</sup> | i/c                       | 1000 V <sub>p</sub>              | 1.2 / 50 μs   | 12 Ω<br>9 μF  | 5 pos. & 5 neg. surges per coupling mode                    | yes      | B <sup>5</sup>                   |
|                                    |                  |                | +i/-i                     | 500 V <sub>p</sub>               |   |               |   |          |                                  |
| Conducted disturbances             | IEC/EN 61000-4-6 | 3 <sup>3</sup> | i, o, signal wires        | 10 VAC <sup>3</sup>              | AM 80% / 1 kHz  | 150 Ω         | 0.15 – 80 MHz   | yes      | A                                |
|                                    |                  | 2 <sup>4</sup> |                           | 3 VAC <sup>4</sup>               |   |               |   |          |                                  |

<sup>1</sup> i = input, o = output, c = case.

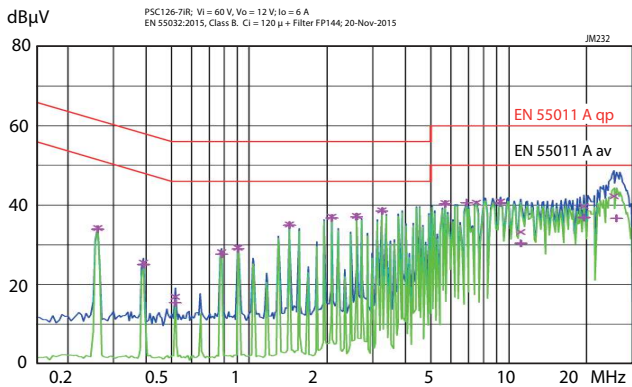
<sup>2</sup> A = Normal operation, no deviation from specifications, B = Normal operation, temporary loss of function or deviation from specs possible

<sup>3</sup> Not applicable for -2 models

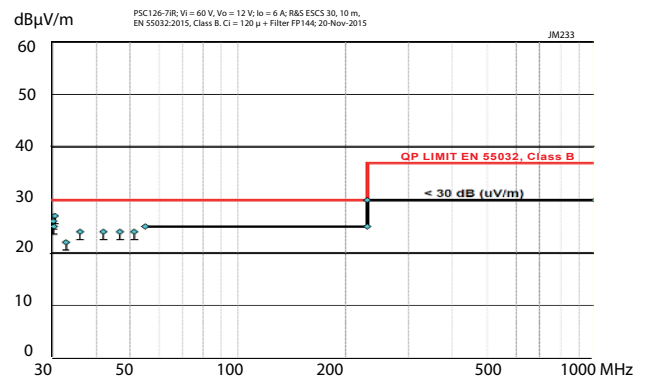
<sup>4</sup> Valid for -2 models

<sup>5</sup> Option L necessary; with option C, manual reset might be necessary.

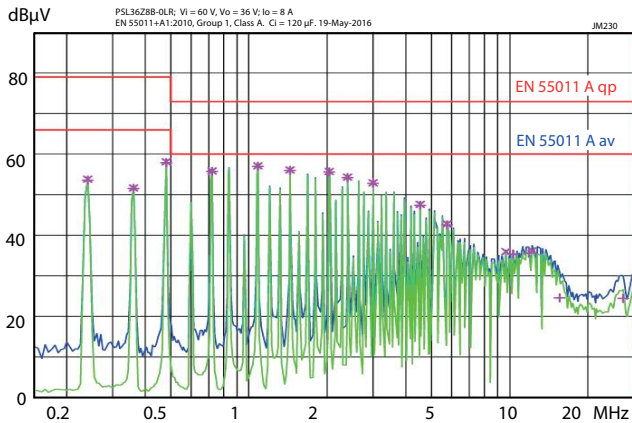
**Electromagnetic Emission**



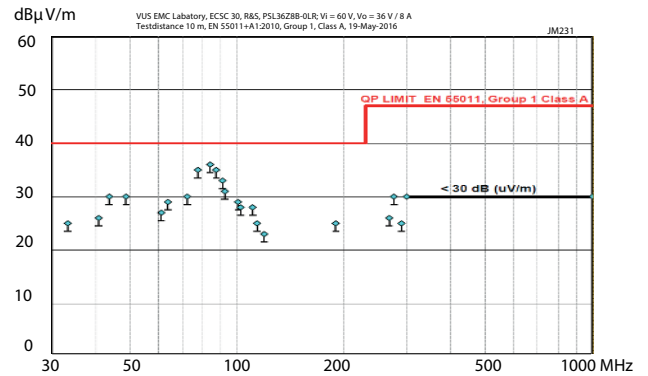
**Fig. 11a**  
*PSC126-7iR: Conducted disturbances at the input as per EN 55011, at  $V_i = 60\text{ V}$ ,  $V_o = 12\text{ V}$ ,  $I_o = 6\text{ A}$ . External  $C_i = 120\text{ }\mu\text{F}$  + Filter FP144.*



**Fig. 11b**  
*PSC126-7iR: Radiated disturbances in 10 m distance, as per EN 55011, at  $V_i = 60\text{ V}$ ,  $V_o = 12\text{ V}$ ,  $I_o = 6\text{ A}$ .*



**Fig. 12a**  
*PSL36Z8B: Conducted disturbances at the input according to EN 55011, group 1, class A, at  $V_i = 60\text{ V}$ ,  $V_o = 12\text{ V}$ ,  $I_o = 8\text{ A}$ ; external  $C_{ext} = 120\text{ }\mu\text{F}$ .*



**Fig. 12b**  
*PSL36Z8B: Radiated disturbances in 10 m distance, according to EN 55011, at  $V_i = 60\text{ V}$ ,  $V_o = 12\text{ V}$ ,  $I_o = 8\text{ A}$ ; external  $C_{ext} = 120\text{ }\mu\text{F}$ .*

## IMMUNITY TO ENVIRONMENTAL CONDITIONS

Table 7: Mechanical and climatic stress

| Test method |  | Standard  | Test Conditions                |   | Status                  |
|-------------|--|---|--------------------------------|---|-------------------------|
| Cab         | Damp heat steady state                             | IEC/EN 60068-2-78<br>MIL-STD-810D section 507.2 | Temperature:                   | 40 ±2 °C  | Regulator not operating |
|             |  |   | Relative humidity:             | 93 ±2/-3 %  |                         |
|             |  |   | Duration:                      | 56 days   |                         |
| Ea          | Shock (half-sinusoidal)                            | IEC/EN 60068-2-27<br>MIL-STD-810D section 516.3 | Acceleration amplitude:        | 50 g <sub>n</sub> = 490 m/s <sup>2</sup>              | Regulator operating     |
|             |  |   | Bump duration:                 | 11 ms   |                         |
|             |  |   | Number of bumps:               | 18 (3 in each direction)                              |                         |
| Fc          | Vibration (sinusoidal)                             | IEC/EN 60068-2-6<br>MIL-STD-810D section 514.3  | Acceleration amplitude:        | 0.35 mm (10 – 60 Hz)                                  | Regulator operating     |
|             |  |   |                                | 5 g <sub>n</sub> = 49 m/s <sup>2</sup> (60 - 2000 Hz) |                         |
|             |  |   | Frequency (1 Oct/min):         | 10 – 2000 Hz  |                         |
|             |  |   | Test duration:                 | 7.5 h (2.5 h in each axis)                            |                         |
| Fda         | Random vibration wide band<br>Reproducibility high | IEC/EN 60068-2-35<br>DIN 40046 part 23          | Acceleration spectral density: | 0.05 g <sub>n</sub> <sup>2</sup> /Hz                  | Regulator operating     |
|             |  |   | Frequency band:                | 20 to 500 Hz  |                         |
|             |  |   | Acceleration magnitude:        | 4.9 g <sub>n rms</sub>                                |                         |
|             |  |   | Test duration:                 | 3 h (1 h in each axis)                                |                         |
| Kb          | Salt mist cyclic (sodium chloride NaCl solution)   | IEC/EN 60068-2-52                               | Concentration:                 | 5 % (30 °C)   | Regulator not operating |
|             |  |   | Duration:                      | 2 h per cycle   |                         |
|             |  |   | Storage:                       | 40 °C, 93% rel. humidity                              |                         |
|             |  |   | Storage duration:              | 22 h per cycle  |                         |
|             |  |   | Number of cycles:              | 3   |                         |

## Temperatures

Table 8: Temperature specifications, valid for air pressure of 800 to 1200 hPa (800 to 1200 mbar)

| Temperature     |                                  | -2                  |  |      | -7 (Option) |     |      | -9  |     |      | Unit |     |     |
|-----------------|----------------------------------|---------------------|--|------|-------------|-----|------|-----|-----|------|------|-----|-----|
| Characteristics |                                  | Conditions          |  | min  | typ         | max | min  | typ | max | min  |      | typ | max |
| T <sub>A</sub>  | Ambient temperature <sup>1</sup> | Regulator operating |  | - 10 |             | 50  | - 25 |     | 71  | - 40 |      | 71  | ° C |
| T <sub>C</sub>  | Case temperature                 |                     |  | - 10 |             | 80  | - 25 |     | 95  | - 40 |      | 95  |     |
| T <sub>S</sub>  | Storage temperature <sup>1</sup> | Not operational     |  | - 25 |             | 100 | - 40 |     | 100 | - 55 |      | 85  |     |

<sup>1</sup> See *Thermal Considerations and Overtemperature Protection*.

## Reliability

Table 9: Typical MTBF and device hours

| MTBF                          | Ground benign          | Ground fixed           |                        | Ground mobile          | Device hours <sup>1</sup> |
|-------------------------------|------------------------|------------------------|------------------------|------------------------|---------------------------|
|                               |                        | T <sub>c</sub> = 40 °C | T <sub>c</sub> = 70 °C |                        |                           |
| Case temperature              | T <sub>c</sub> = 40 °C | T <sub>c</sub> = 40 °C | T <sub>c</sub> = 70 °C | T <sub>c</sub> = 50 °C |                           |
| MTBF accord. to MIL-HDBK-217F | 660 000 h              | 143 000 h              | 81 000 h               | 68 000 h               | 2 800 000 h               |

<sup>1</sup> Statistical values, based on an average of 4300 working hours per year and in general field use

## MECHANICAL DATA

### PSC models

Dimensions in mm.

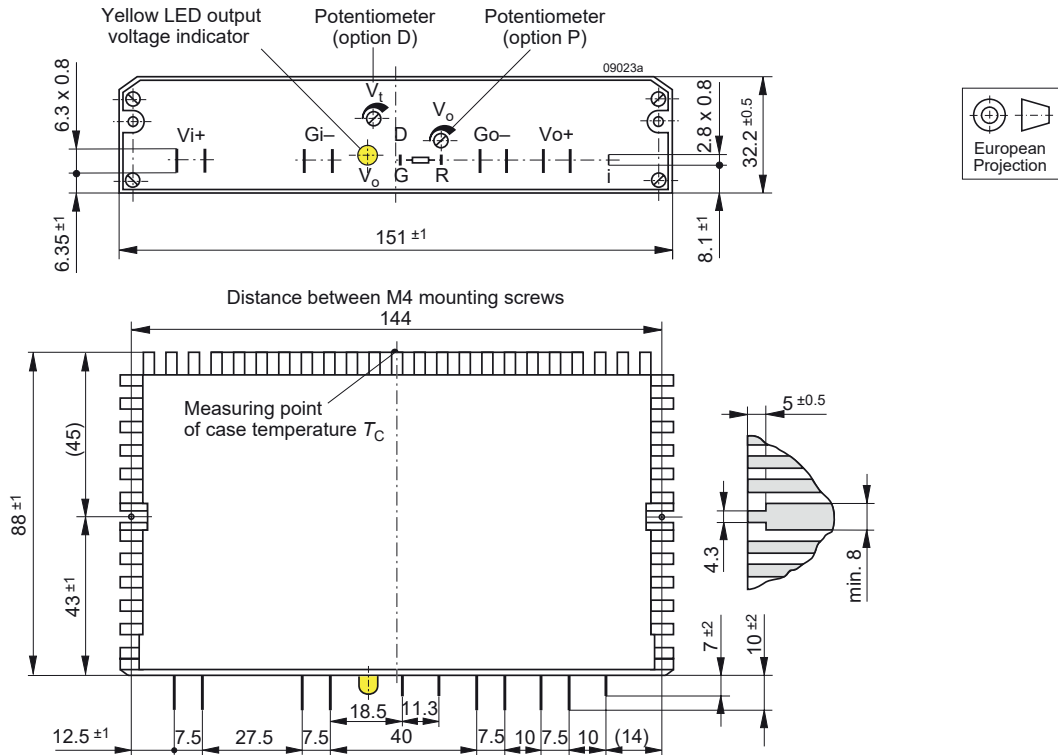


Fig. 13  
Case C03, weight 440 g; Aluminium, black finish and self cooling

### PSL models

The regulators are designed to be inserted into a DIN-rack according to IEC 60297-3. Dimensions in mm.

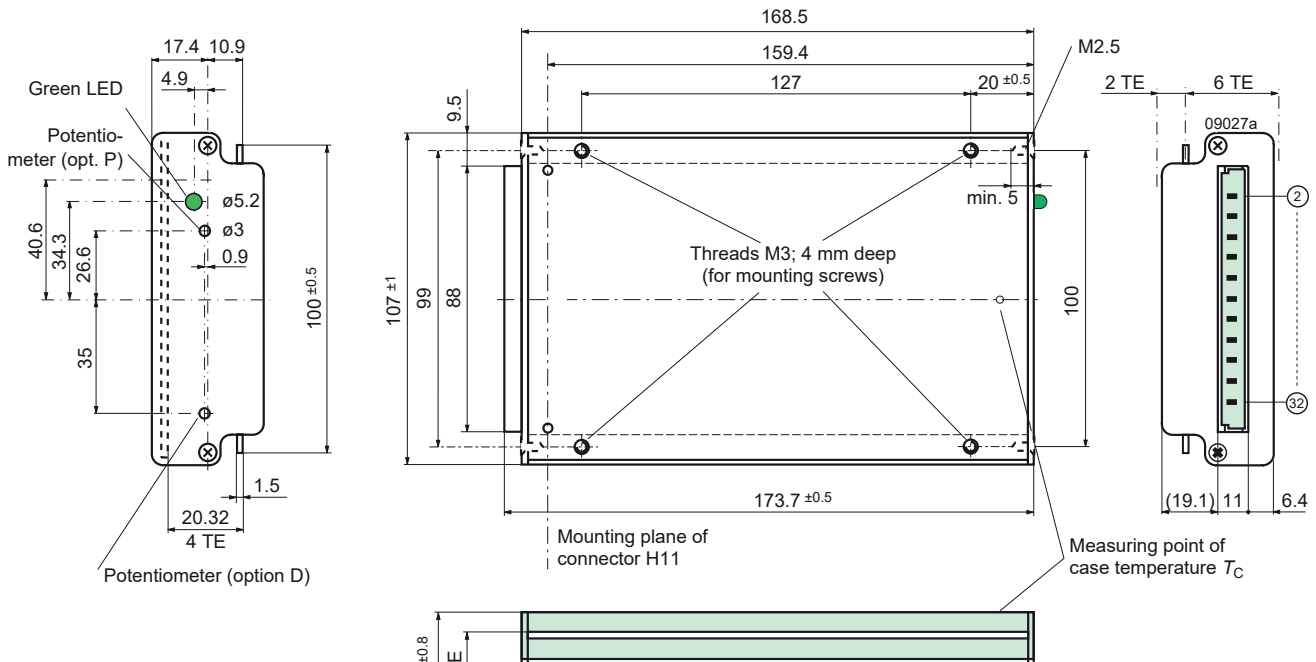


Fig. 14  
Case L04, weight 550 g; Aluminium, fully enclosed, black finish EP powder-coated, and self cooling




## SAFETY AND INSTALLATION INSTRUCTIONS

### Pin Allocation

The pins of PSC models are printed onto the case of the regulator.

The pin allocation of PSL models is shown in the table below:

Table 10: H11 connector pin allocation (PSL models)

| Electrical Determination                | Type H11 |   |
|---|----------|---|
|   | Pin No.  | Design.   |
| R-input (or inhibit input) <sup>1</sup> | 2        | R (i)   |
| Undervoltage monitor (Option D)         | 5        | D   |
| Output voltage (negative)               | 8        | Go-   |
| Output voltage (negative)               | 11       | Go-   |
| Output voltage (positive)               | 14       | Vo+   |
| Output voltage (positive)               | 17       | Vo+   |
| Input voltage (negative)                | 20       | Gi-   |
| Input voltage (negative)                | 23       | Gi-   |
| Input voltage (positive)                | 26       | Vi+   |
| Input voltage (positive)                | 29       | Vi+   |
| Protective earth PE (leading pin)       | 32       |  |

<sup>1</sup> R-input is used for the inhibit function. Consequently, option R and i exclude each other.

### Installation Instruction

Installation must strictly follow the national safety regulations in compliance with the enclosure, mounting, creepage, clearance, casualty, markings, and segregation requirements of the end-use application.

Check for hazardous voltages before connecting. Connections of PSC models can be made using fast-on or soldering technique. PSL models should be plugged into a DIN-rack

The input and the output circuit are not separated, i.e., the negative path is internally interconnected.

The regulators should be connected to a secondary circuit.

Do not open the regulator !

Ensure that a unit failure (e.g., by an internal short-circuit) does not result in a hazardous condition.

### Cleaning Liquids

In order to avoid possible damage, any penetration of cleaning fluids must be prevented, since the power supplies are not hermetically sealed.

### Protection Degree

The protection degree is IP 30 (IP 20, if equipped with option P, D, or D1 and for PSC models). It applies only, if the regulator is plugged-in or the matching female connector is properly attached.

### Standards and Approvals

All switching regulators have been approved according to the latest edition of IEC/EN 62368-1 and CSA 60950-1.

The regulators have been evaluated for:

- Building in
- The use in a pollution degree 2 environment
- Connecting the input to a secondary circuit, which is subject to a maximum transient rating of 1500 V.

The switching regulators are subject to manufacturing surveillance in accordance with the above mentioned standards and with ISO 9001:2015.



### Isolation

The resistance of the protective earth connection (max. 0.1  $\Omega$ ) is tested only for PSL models.

PSC models: Electric strength test voltage between input connected with output against case: 2200 VDC,  $\geq 1$  s (for some PSC models only with version V103 or higher).

PSL models: The electric strength between the input, interconnected with the output, and the case is tested with 500 VDC (all -2 models), 750 VDC (models with  $V_{i\max} = 80$  V), or 1500 VDC (models with  $V_{i\max} = 144$ ) during  $\geq 1$  s.

These tests are performed in the factory as routine test in accordance with EN 62911 and IEC/EN 62368-1. The electric strength test should not be repeated by the customer.

### Railway Application

The regulators have been developed observing the railway standards EN 50155 and EN 50121. All boards are coated with a protective lacquer.

## DESCRIPTION OF OPTIONS

### -7 Temperature Range

This option defines restricted temperature range as specified in table 8 (not for new designs).

### P Potentiometer

**Note:** Option P is not recommended for new designs and not for several regulators operating in parallel connection.

Option P excludes the R function; the R-input (pin 16) should be left open-circuit. The output voltage  $V_o$  can be adjusted in the range 90 – 110% of  $V_{o\text{ nom}}$ .

However, the minimum differential voltage  $\Delta V_{i\text{ o min}}$  between input and output specified in *Electrical Input Data* should be respected.

### L Input Filter

Option L is recommended to reduce superimposed interference voltages and to prevent oscillations, if input lines exceed the length of approx. 5 m in total. The fundamental wave (approx. 120 kHz) of the reduced interference voltage between  $V_{i+}$  and  $G_{i-}$  has, with an input line inductance of 5  $\mu\text{H}$ , a maximum magnitude of 4 mVAC.

The input impedance of the switching regulator at 120 kHz is about 3.5  $\Omega$ . The harmonics are small in comparison with the fundamental wave.

With option L, the maximum permissible additionally superimposed ripple  $v_i$  of the input voltage (rectifier mode) at a specified input frequency  $f_i$  has the following values:

$$V_{i\text{ max}} = 10 V_{pp} \text{ at } 100 \text{ Hz or } V_{pp} = 1000 \text{ Hz}/f_i \cdot 1\text{V}$$

### C Thyristor Crowbar

Option C protects the load against power supply malfunction. It is not designed to sink external currents. A fixed-value monitoring circuit checks the output voltage  $V_o$ . When the trigger voltage  $V_{o\text{ c}}$  is reached, the thyristor crowbar triggers and disables the output. It can be deactivated by removal of the input voltage. In case of a defect switching transistor, the internal fuse prevents excessive current.

Type of the fuse:

- Regulators with  $I_{o\text{ nom}} = 6 \text{ A}$ : 6.3 A / 250 V, slow, 5 x 20 mm
- Regulators with  $I_{o\text{ nom}} > 6 \text{ A}$ : 16 A / 250 V, slow, 5 x 20 mm

**Note:** The crowbar can be reset by removal of the input voltage only. The inhibit signal cannot deactivate the thyristor.

Table 11: Crowbar trigger levels

| Characteristics  |                 | Conditions  | $V_o = 5.1 \text{ V}$ |     |     | $V_o = 12 \text{ V}$ |     |     | $V_o = 15 \text{ V}$ |     |     | $V_o = 24 \text{ V}$ |     |     | $V_o = 36 \text{ V}$ |     |               | Unit |
|------------------|-----------------|---|-----------------------|-----|-----|----------------------|-----|-----|----------------------|-----|-----|----------------------|-----|-----|----------------------|-----|---------------|------|
|                  |                 |   | min                   | typ | max | min                  | typ | max | min                  | typ | max | min                  | typ | max | min                  | typ | max           |      |
| $V_{o\text{ c}}$ | Trigger voltage | $T_{C\text{ min}} - T_{C\text{ max}}$                                 | 5.8                   | 6.8 |     | 13.5                 | 16  |     | 16.5                 | 19  |     | 27                   | 31  |     | 40                   | 45  | V             |      |
| $t_s$            | Delay time      | $V_{i\text{ min}} - V_{i\text{ max}}$<br>$I_o = 0 - I_{o\text{ nom}}$ |                       | 1.5 |     |                      | 1.5 |     |                      | 1.5 |     |                      | 1.5 |     |                      | 1.5 | $\mu\text{s}$ |      |

### D Input Undervoltage Monitor

Terminal D and  $G_{o-}$  are connected to a normally conducting field effect transistor (JFET). A 0.5 W Zener diode protects against overvoltages.

The switching characteristics of the option D output are shown in fig. 16.

The voltage  $V_t$  can be externally adjusted by a trim potentiometer. The hysteresis  $V_H$  of  $V_t$  is <2%. Pin D stays low for a minimum time  $t_{\text{low min}}$ , in order to prevent any oscillation.  $V_t$  can be set to a value between  $V_{i\text{ min}}$  and  $V_{i\text{ max}}$ . Note that the JFET becomes conductive, when  $V_D$  exceeds approx. 7 V.

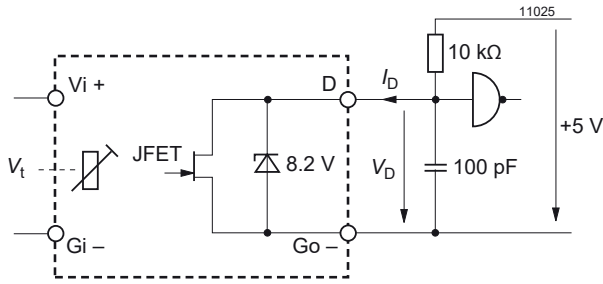


Fig. 15  
Test circuit with definition of voltage  $V_D$  and current  $I_D$

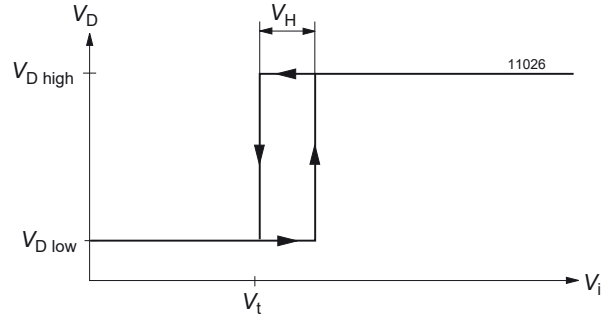


Fig. 16  
Definition of  $V_t$  and  $V_H$

Table 12: Data of option D

| Characteristics       |                           | Conditions                             | PSC / PSL |     |     | Unit |
|-----------------------|---------------------------|--|-----------|-----|-----|------|
|                       |                           |  | min       | typ | max |      |
| $V_{D,low}$           | Low impedance             | $V_i < V_t, I_D \leq 2.5 \text{ mA}$   |           |     | 0.8 | V    |
| $V_{D,high}$          | High impedance            | $V_i > V_t + V_H, I_D > 25 \text{ mA}$ | 4.75      |     |     |      |
| $t_{low \text{ min}}$ | Min. duration $V_{D,low}$ |  |           | 30  |     | ms   |
| $t_{Df}$              | Response to $V_{D,low}$   |  |           | 1   |     | ms   |
| $I_D$                 | Current through D         |  |           |     | 20  | mA   |

## K Connector Coding Strip

For PSL models only.

## G RoHS Compliance

Models with G are RoHS-compliant for all six substances.

## ACCESSORIES

A variety of electrical and mechanical accessories are available including:

- Battery sensor [S-KSMH...] for using the regulator as battery charger. Different cell characteristics can be selected; see fig. 17 and the [Temperature Sensors](#) data sheet.

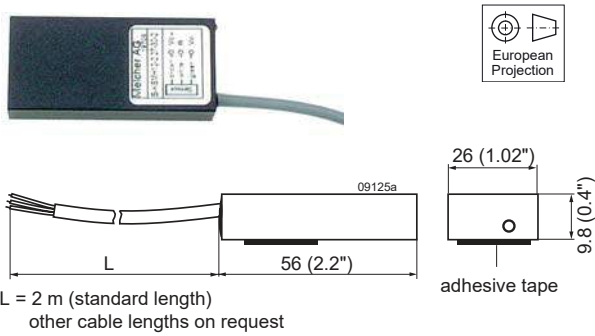


Fig. 17  
Battery temperature sensors

### Accessories suitable for PSC models

- Solder-tags for direct mounting of the regulator to a PCB board (Delivery content: 10 pcs); see fig. 18.
- Different filters and ring core chokes for ripple and interference reduction; see fig. 19
- PCB isolation pads for easy and safe PCB-mounting; see fig. 20
- Input filters FP; see table 13 and fig. 21.

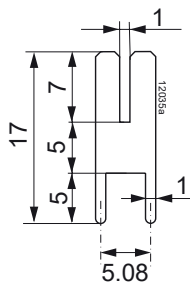


Fig. 18  
Solder tag HZZ01204-G.



Fig. 19  
Different filters

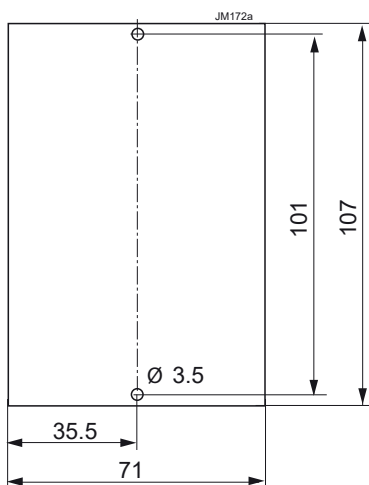


Fig. 20  
Different mating connectors, including code key system

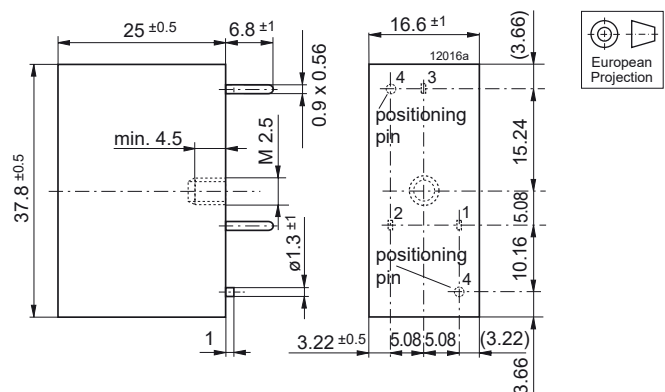


Fig. 21  
Mechanical data of FP filters. Weight approx. 30 g

Table 13: Input filters FP.  $T_A = 25^\circ\text{C}$  unless otherwise specified

| Characteristics |                            | Conditions                       | FP 38 <sup>2</sup> |     |     | FP 80 |     |     | FP 144 |     |     | Unit |
|-----------------|----------------------------|----------------------------------|--------------------|-----|-----|-------|-----|-----|--------|-----|-----|------|
|                 |                            |                                  | min                | typ | max | min   | typ | max | min    | typ | max |      |
| $I_{Fn}$        | Rated current <sup>1</sup> | $L = 0.75 L_o$                   | 4                  |     |     | 4     |     |     | 2      |     |     | A    |
| $V_{Fn}$        | Rated voltage              | $T_{C\min} - T_{C\max}$          | 5                  |     | 40  | 5     |     | 80  | 15     |     | 144 | VDC  |
| $R_F$           | Ohmic resistance           |                                  | 18                 | 20  | 22  | 18    | 20  | 22  | 90     | 95  | 100 | mΩ   |
| $L_o$           | No load inductance         | $I_L = 0, T_{C\min} - T_{C\max}$ | 30                 | 34  | 38  | 30    | 34  | 38  | 88     | 100 | 112 | μH   |
| $T_A$           | Ambient temperature        | $I_F = I_{Fn}$                   | - 40               |     | 80  | - 40  |     | 80  | - 40   |     | 95  | °C   |
| $T_C$           | Case temperature           |                                  | - 40               |     | 92  | - 40  |     | 92  | - 40   |     | 98  |      |
| $T_S$           | Storage temperature        | Not operational                  | - 40               |     | 100 | - 40  |     | 100 | - 55   |     | 100 |      |

<sup>1</sup> For currents  $I_F > 4$  A the following derating takes place:  $T_{A\max} = 100 - 1.3 \cdot I_F^2$  [°C],  $T_{C\max} = 100 - 0.49 \cdot I_F^2$  [°C].

<sup>2</sup> FP 38 is obsolete.

### Accessories suitable for PSL models:

- Various mating connectors H11, including screw, solder, fast-on, or press-fit terminals; see the data sheet [Cassette Style Mating Connectors](#).
- Code key system for connector coding. Coding wedges HZZ00202-G (5 pieces); see fig. 22.
- Various front panels for 19" racks with 3U height, Schroff or Intermas; see fig. 23.



Fig. 22  
Different mating connectors, including code key system



Fig. 23  
Different front panels

For additional accessory product information, see the accessory data sheets listed with each product series at our web site.

**NUCLEAR AND MEDICAL APPLICATIONS** - These products are not designed or intended for use as critical components in life support systems, equipment used in hazardous environments, or nuclear control systems.

**TECHNICAL REVISIONS** - The appearance of products, including safety agency certifications pictured on labels, may change depending on the date manufactured. Specifications are subject to change without notice.