

# Type BLM-I-306

## Fuse Block - Indicating

### 6 Pole – Miniature Auto Blade



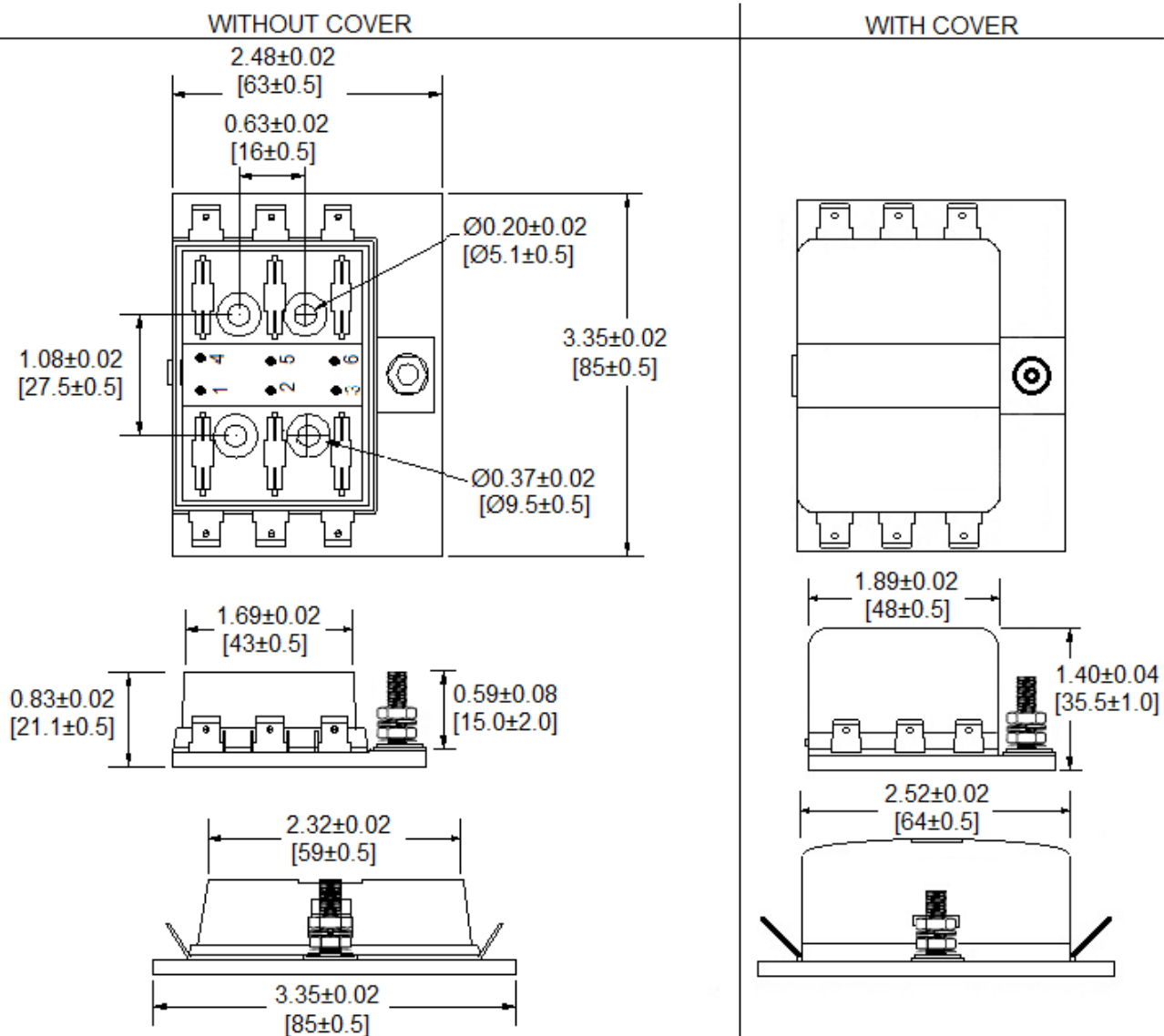
www.optifuse.com

(619) 593-5050

#### Specifications:

- Max Current Rating:** 30A per Circuit - 100A Max Input
- Fuse Type:** Miniature Auto Blade – APM, ANM Series
- Base:** PBT (UL-Flame 94V-0)
- Cover:** PC (UL-Flame 94V-2)
- Terminals:** Tin Plated Brass - 0.250" Quick Connect Terminals
- Indicating LED** – Red
- Temperature Rating:** -20° C ~ +85° C

#### Mechanical Dimensions: Inches [mm]



#### Warning:



- Operation beyond the specified maximum ratings or improper use may result in damage and possible electrical arcing and/or flame.
- Avoid contact of device with chemical solvent. Prolonged contact may damage the device performance.

Note: All specifications subject to change without notice.

Rev C 05/2017 - Page: 1/1  
 Code S02-01H