



Module for TWR-S08UNIV

TOWER SYSTEM



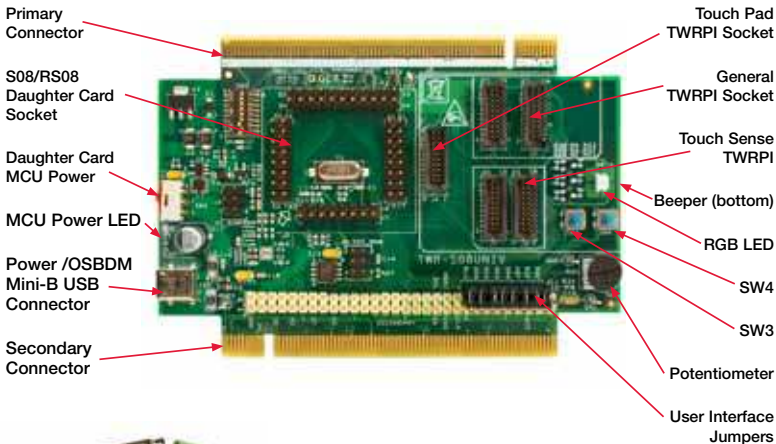
Quick Start Guide

Universal RS08/S08 MCU
module (TWR-S08UNIV)





Get to Know the TWR-S08UNIV

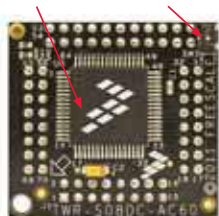


TWR-S08UNIV Freescale Tower System

The TWR-S08UNIV universal RS08/S08 board is part of the Freescale Tower System, a modular development platform that enables rapid prototyping and tool re-use through reconfigurable hardware. Take your design to the next level and begin constructing your Tower System today by visiting freescale.com/Tower for additional Tower System microcontroller modules and compatible peripherals.

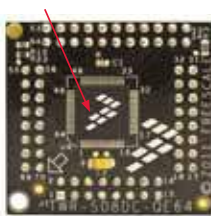
Get to Know the TWR-S08DC

MC9S08AC60 3V/5V Switch



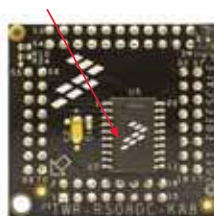
TWR-S08DC-AC60

MC9S08QE64



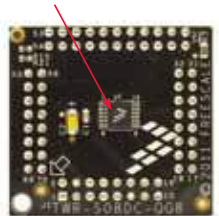
TWR-S08DC-QE64

MC9RS08KA8



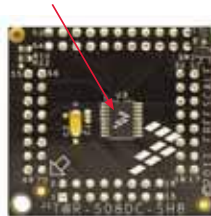
TWR-RS08DC-KA8

MC9S08QG8



TWR-S08DC-QG8

MC9S08SH8



TWR-S08DC-SH8

MC9S08QD4



TWR-S08DC-QD4

Step-by-Step Installation Instructions

In this Quick Start Guide, you will learn how to set up the TWR-S08UNIV and TWR-S08DC modules and run the default demonstration.

STEP
1

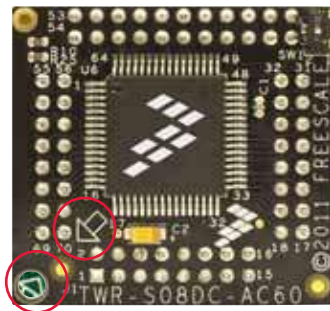
Install the Software and Tools

Install the P&E Micro Tower Toolkit to install the OSBDM and USB-to-Serial drivers. These can be found on the DVD under "Software."

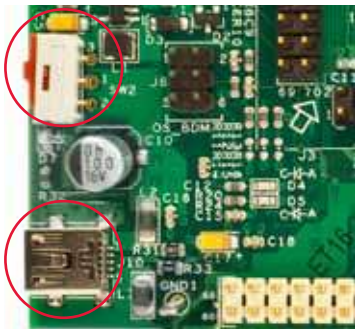
STEP
2

Configure Hardware

a) Select one of the TWR-(R)S08DC daughter cards. Plug it into the TWR-S08UNIV board. Ensure that the white arrows are aligned.

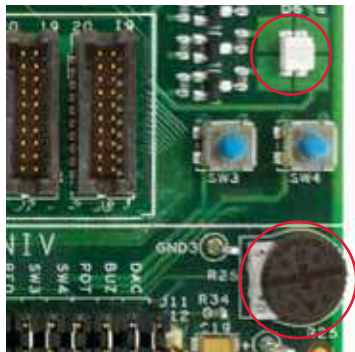


b) Connect one end of the USB cable to the PC and the other end to the power/OSBDM mini-B connector on the TWR-S08UNIV module. Allow the PC to automatically configure the USB drivers if needed. Turn on the SW2 MCU power switch.



STEP 3 Play

Turn the dial on the potentiometer (R25) and the LED (D6) will flash faster or slower depending on the position of the dial.



STEP
4

Explore Further

Install CodeWarrior IDE and CodeCreator software found on the DVD under “Software.” The CodeCreator software is a quick and easy-to-use GUI that allows you to create an RS08/S08 peripheral module example and complete a CodeWarrior project in under 10 seconds.



STEP
5

Learn More

Explore advanced options for several of the daughter cards. Daughter cards will support connections using the on-board OSBDM serial port. Easy access to peripherals signals such as I²C, SPI and UART is provided through the breakout headers and the Tower System primary connector. The Tower System plug-in sockets interface to off-the-shelf sensor boards, including capacitive touch, inertial and pressure. Learn more about the TWR-S08UNIV board and the TWR-S08DC daughter cards at freescale.com/TWR-S08UNIV.



ide for TWR-S08UNIV

TOWER SYSTEM



To learn more about the TWR-S08UNIV and the TWR-S08DC daughter cards, visit freescale.com/TWR-S08UNIV. To become a member of the online Tower Geeks community, visit towergeeks.org.

Freescale, the Freescale logo and CodeWarrior are trademarks or registered trademarks of Freescale Semiconductor, Inc. Reg. U.S. Pat. & Tm. Off. All other product or service names are the property of their respective owners. © 2011 Freescale Semiconductor, Inc.

Doc Number: TWRUNIVQSG / REV 0
Agile Number: 926-78608 / REV A

