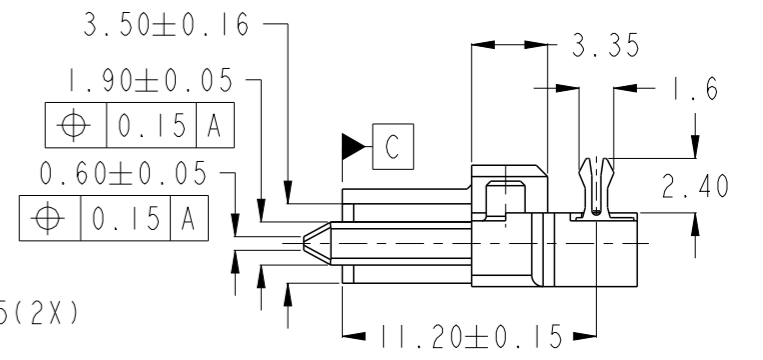
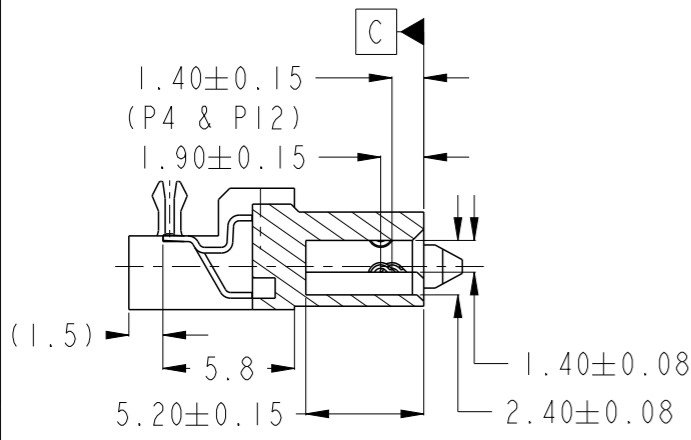
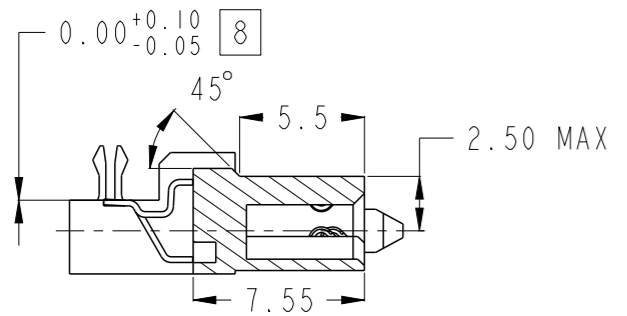
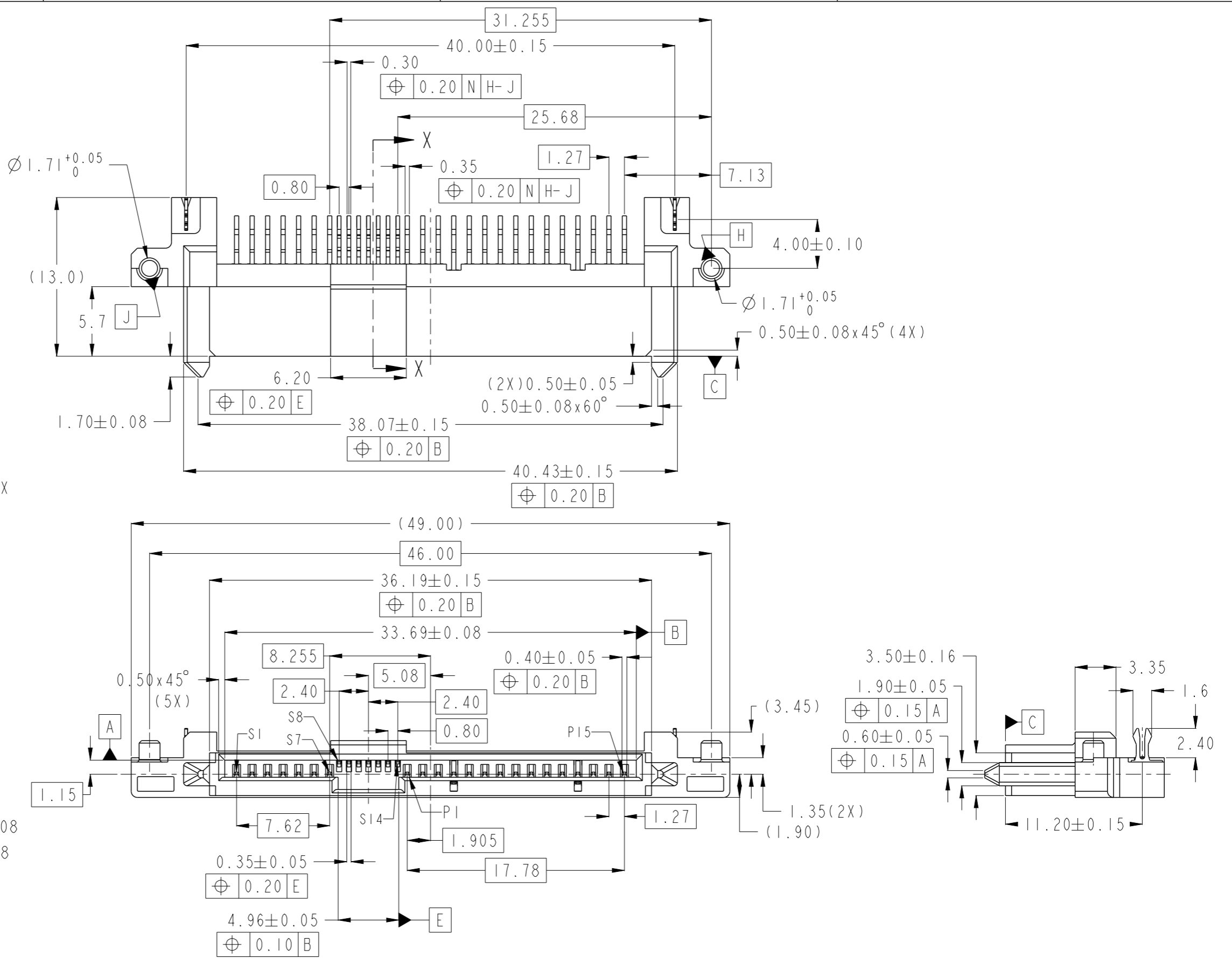


PRODUCT No.
SEE TABLE

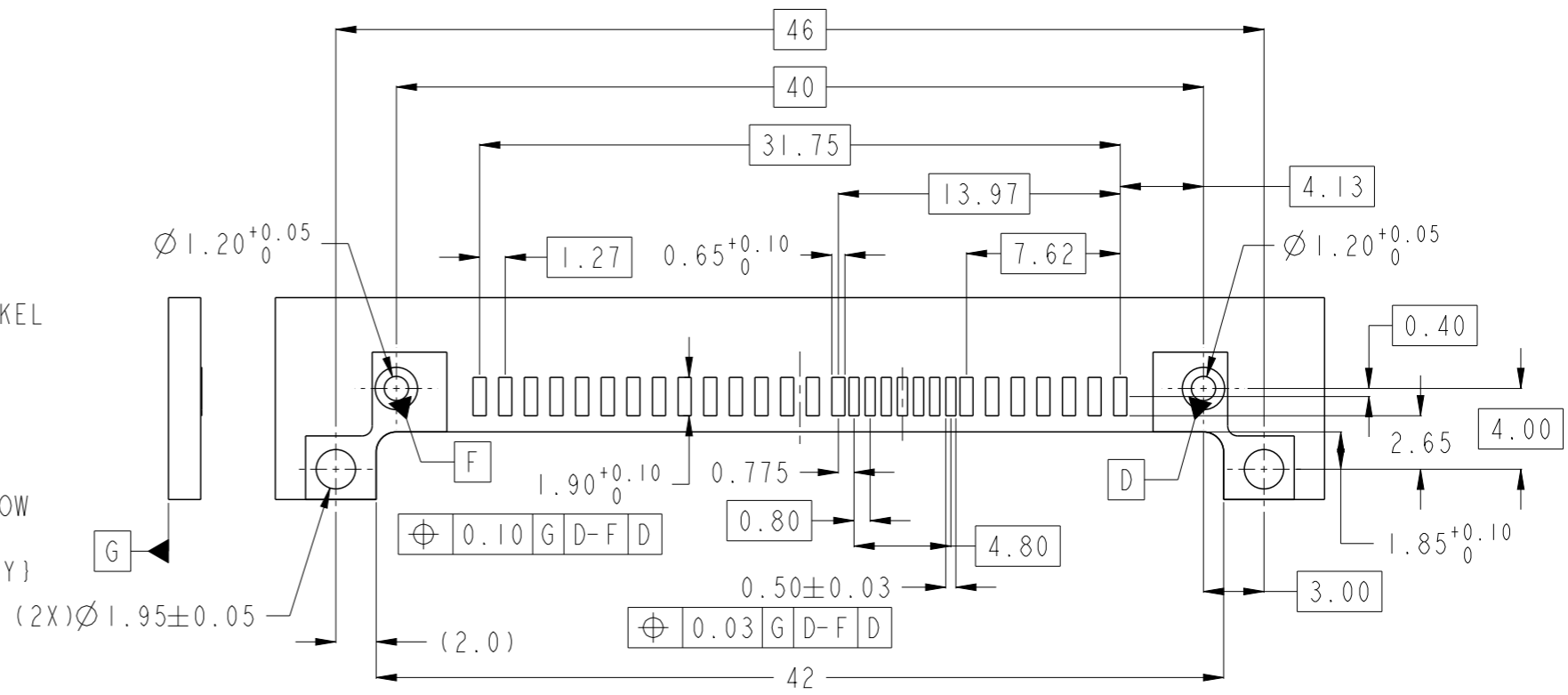


Copyright FCI.

spec ref	-	dr	Koon-Poh Tay	2012/04/09	projection	mm	size	A3	scale	1:1
tolerance std	ISO 406 ISO 1101	eng	Koon-Poh Tay	2012/04/12			ecn no	-	rel level	Released
surface	$\sqrt{\text{ }}$	chr	-	-			product family	-	rel level	Released
		appr	Chen-Hong Tan	2012/04/18			product family	-	rel level	Released
		linear	0.X	± 0.20			product family	-	rel level	Released
			0.XX	± 0.20			product family	-	rel level	Released
			0.XXX	\pm			product family	-	rel level	Released
		angular	0°	$\pm 2^\circ$			product family	-	rel level	Released
TOLERANCES UNLESS OTHERWISE SPECIFIED		www.fci.com		SAS RECEPTACLE RA SMT ASSY		cat. no.		Product - Customer Drw		sheet 1 of 2
				dwg no		10119649		rev		A

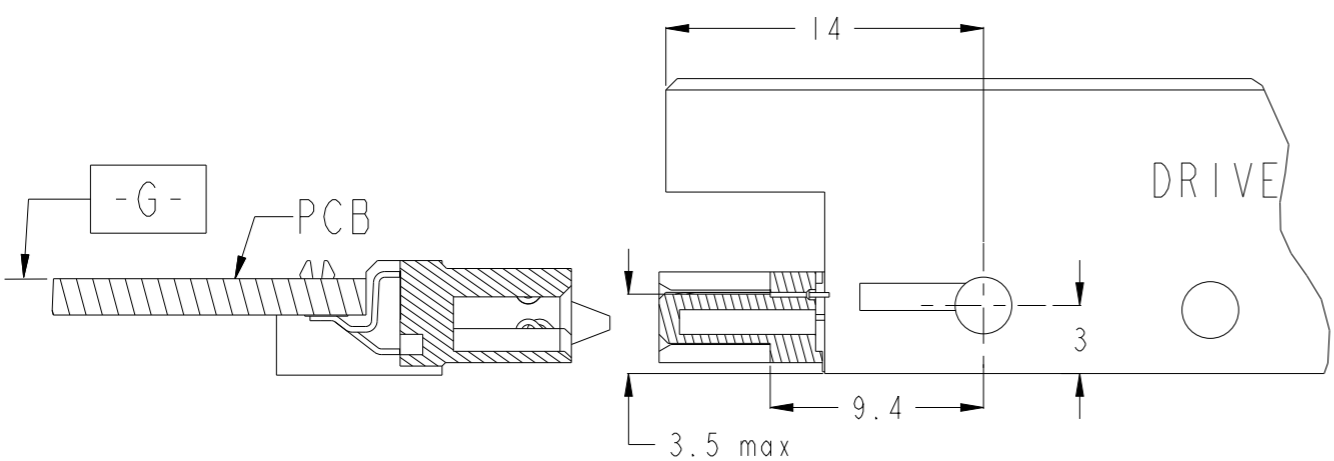
PRODUCT No.	PACKAGING
10119649-001LF	TRAY

- NOTES:
- MATERIAL:
 - HOUSING: HIGH TEMP THERMOPLASTIC, UL 94V-0
COLOUR: BLACK
 - TERMINAL: COPPER ALLOY
 - HOLD DOWN: COPPER ALLOY
 - FINISH:
 - TERMINAL: 30u" Au PLATING (CONTACTPOINT) OVER 50u" MIN NICKEL
 - SOLDER TAIL: 100u" MIN TIN OVER 50u" MIN NICKEL
 - HOLD DOWN: 100u" MIN OVER 50u" MIN NICKEL
 - THE STD PACKAGING IS IN TRAY, UNLESS OTHERWISE SPECIFIED.
 - PRODUCT SPECIFICATION: GS-12-282
 - THE HOUSING WILL WITHSTAND EXPOSURE TO 260° PEAK TEMPERATURE FOR 10 SECONDS IN A CONVECTION, INFRA-RED OR VAPOR PHASE REFLOW OVEN.
 - THIS PRODUCT MEETS EUROPEAN UNION DIRECTIVES AND OTHER COUNTRY REGULATIONS AS DESCRIBED IN GS-22-008.
 - PART NUMBERS ENDING IN "LF" MEANS FOR NOTE 11 LEAD FREE IDENTIFICATION.
 - ALL SOLDER TAIL MUST BE WITHIN 0.12mm MAX COPLANARITY.
 - A \triangle 2 SYMBOL WILL BE NEXT TO ANY DIMENSION, VIEW, OR NOTE WHICH HAS BEEN MODIFIED WITH THE CURRENT DRAWING REVISION.



RECOMMENDED PCB LAYOUT
 RECOMMENDED PCB THICKNESS: 1.6mm
 TOLERANCE UNLESS OTHERWISE: ±0.1
 SCALE 3:1

Copyright FCI.



SAS Connector mounting view

spec ref	-	dr	Koon-Poh Tay	2012/04/09	projection	mm	size	A3	scale	1:1
tolerance std	ISO 406 ISO 1101	eng	Koon-Poh Tay	2012/04/12			ecn no	-	rel level	Released
TOLERANCES UNLESS OTHERWISE SPECIFIED		chr	-	-						
surface	ISO 1302	appr	Chen-Hong Tan	2012/04/18	product family	-	rel level	Released		
linear	0.X ±0.20 0.XX ±0.20 0.XXX ±-			title	SAS RECEPTACLE RA SMT ASSY		dwg no	10119649	rev	A
angular	0° ±2°	www.fci.com	cat. no.	-	Product - Customer Drw	sheet 2 of 2				