

4

3

2

1

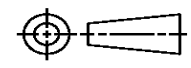
THIS DRAWING IS UNPUBLISHED. RELEASED FOR PUBLICATION
 © COPYRIGHT ALL RIGHTS RESERVED.

LOC	DIST	REVISIONS			
P	LTR	DESCRIPTION	DATE	DWN	APVD
	A1	ECR-14-003112	03MAR2014	GK	HMR

REPLACED BY OCEAN STYLE APPLICATOR PART NUMBER 2151132-1

FOR REPLACEMENT PARTS FOR APPLICATOR 1528874
 REFER TO ADDITIONAL PAGE(S). SPARE PARTS KIT (IF LISTED)
 WILL REMAIN AVAILABLE.

THE REPLACEMENT OCEAN STYLE APPLICATOR HAS THE
 SAME TERMINATOR/PRESS INTERFACE AS APPLICATOR
 1528874

THIS DRAWING IS A CONTROLLED DOCUMENT.		DWN	GOPALAKRISHNA HV		
DIMENSIONS:		CHK	RAGHAVENDRA		
		APVD	RAGHAVENDRA		
TOLERANCES UNLESS OTHERWISE SPECIFIED:		PRODUCT SPEC	NAME		
0 PLC	±	APPLICATION SPEC	FINE ADJUST SIDE FEED HDI APPLICATOR		
1 PLC	±		SIZE	CAGE CODE	DRAWING NO
2 PLC	±		A3		©- 1528874
3 PLC	±				RESTRICTED TO
4 PLC	±				
ANGLES	±	WEIGHT			
MATERIAL	FINISH	CUSTOMER DRAWING	SCALE	SHEET 1 OF 2	REV A1



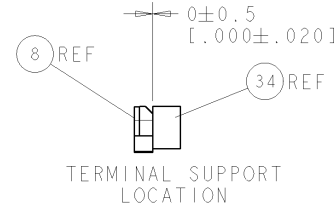
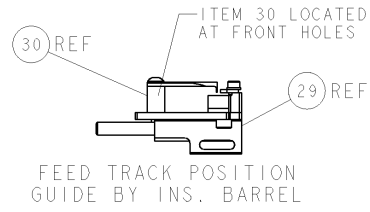
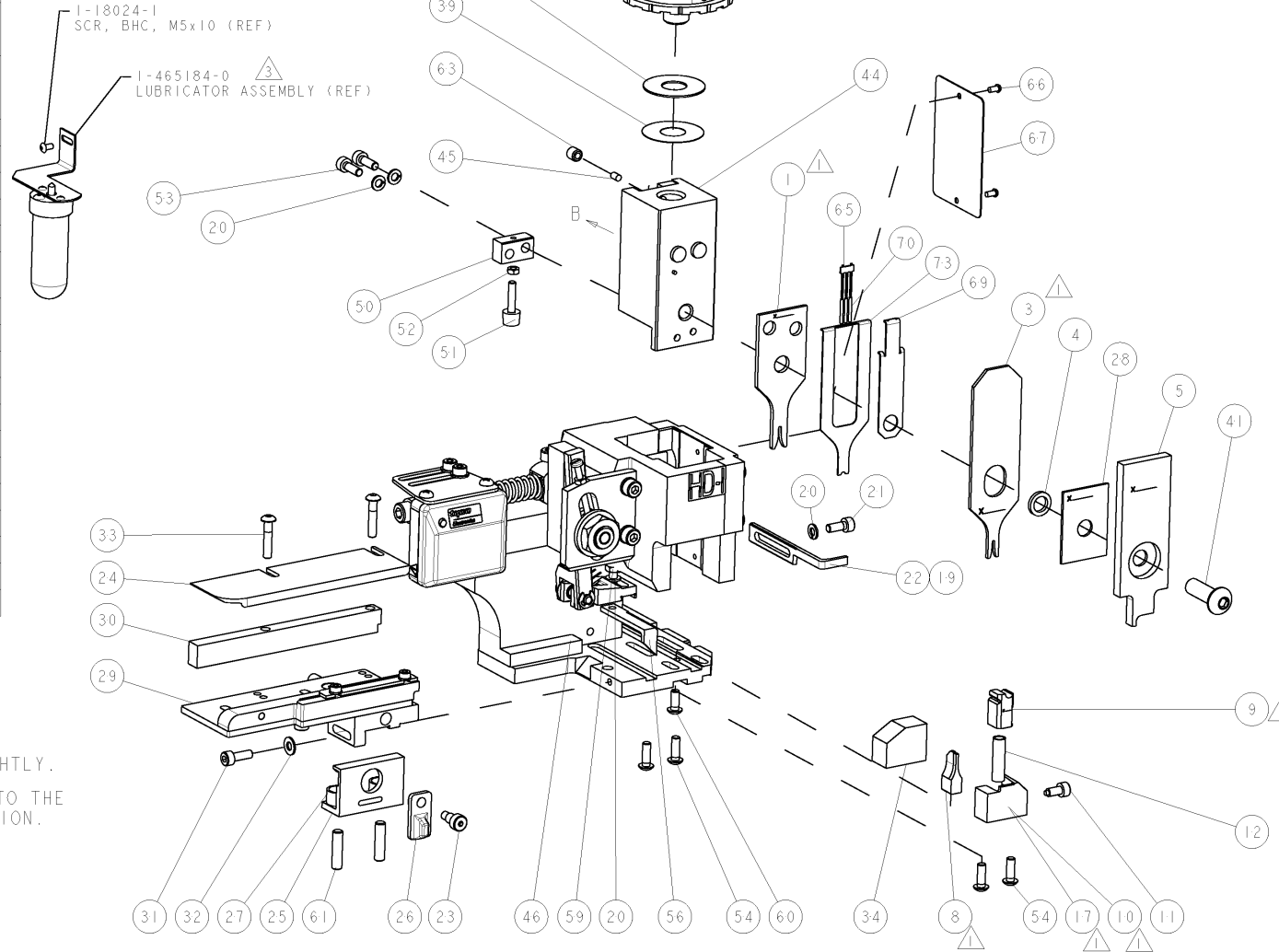
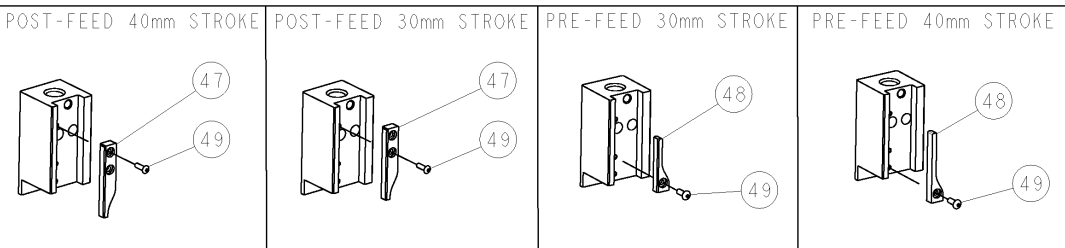
PART NUMBER	REV	TERMINATOR	FEED TYPE	DESCRIPTION
1528874-1	A	LEADMAKER	MECH POST FEED	CUTS CARRIER
1528874-2	A	BENCH	MECH PRE FEED	CUTS CARRIER
1528874-6	A	LEADMAKER	MECH POST FEED	CONTINUOUS CARRIER
7-1528874-1	A	LEADMAKER	MECH POST FEED	-1 AND SPARE PARTS
7-1528874-2	A	BENCH	MECH PRE FEED	-2 AND SPARE PARTS
7-1528874-6	A	LEADMAKER	MECH POST FEED	-6 AND SPARE PARTS
7-1528874-7	A	-	-	SPARE PARTS KIT

CRIMP DATA		TE TERMINAL	TE CRIMP SPECS
TERMINAL NAME: REC. CONTACT FOR MINI MULTILOCK			
CRIMP	SIZE	TYPE	RANGE
WIRE	1.27 [.050 IN]	F	0.30-0.50mm ²
INSUL	1.40 [.055 IN]	O	1.40-1.70 [.055-.067 IN]
WIRE STRIP LENGTH		APPL INSTRUCTIONS	
3.00-3.50 [.118-.138 IN]		408-8322 & 408-8490	
TERMINAL APPL SPEC		FEED	
114-5193		6.90 [.272 IN]	
TERMINALS APPLIED			
917308	-	-	-
917309	-	-	-
WIRE SIZE	CRIMP HEIGHT	REF SETTING	
0.50mm ²	1.02 ± 0.05 [.040 ± .002 IN]	B 5	
0.30mm ² or 0.35mm ²	0.90 ± 0.05 [.035 ± .002 IN]	C 4	

- △ RECOMMENDED SPARE PARTS.
- 2. GREASE RAM, CAM, CAM FOLLOWER AND FEED ROD LIGHTLY.
- △ CERTAIN TERMINALS REQUIRE LUBRICATION. REFER TO THE APPLICATOR INSTRUCTION SHEET FOR MORE INFORMATION.
- 4. LUBRICATE DAILY PER THE APPLICATOR INSTRUCTION SHEET SUPPLIED WITH THE APPLICATOR.

* WARNING
ON INSTALLATION, SET WIRE DISC TO LARGEST WIRE SIZE SETTING. USE OF SETTINGS BELOW MIN. REQUIRED CRIMP HEIGHT SETTING WILL CAUSE DAMAGE TO CRIMP TOOLING.

VIEW B ROTATED 180°



SET UP GAGE
458637-3

REVISONS		DATE	DWN	APPR
A	SEE ECO-08-000949	11JAN2008	LJL	MC

-	-	-	-	-	-	-	1490525-3	DEPRESSOR, WIRE	73
-	-	-	-	-	-	-	-	-	72
-	-	-	-	-	-	-	1338705-3	DOCUMENTATION PACKAGE	71
-	3	3	3	3	3	-	1-23147-4	SPRING, COMPRESSION	70
-	-	-	-	-	-	-	1490524-1	DEPRESSOR, SPACER	69
-	-	-	-	-	-	-	-	-	68
-	-	-	-	-	-	-	461264-5	PLATE, IDENTIFICATION	67
-	2	2	2	2	2	-	21017-2	SCREW, DRIVE	66
-	-	-	-	-	-	-	1424350-1	HOLDER, PIN, WIRED	65
-	-	-	-	-	-	-	-	-	64
-	-	-	-	-	-	-	3-18031-0	SCR, SET, CUP POINT M6 X 6.0	63
-	-	-	-	-	-	-	-	-	62
-	-	-	-	-	-	-	2-18032-5	SCR, SET, FLT POINT M5 X 20.0	61
-	-	-	-	-	-	-	18024-7	SCR, BTN SKT HD CAP (M4 X 10.0)	60
-	-	-	-	-	-	-	5-18022-2	SCR, HEX HD CAP M4 X 8.0	59
-	-	-	-	-	-	-	-	-	58
-	-	-	-	-	-	-	-	-	57
-	-	-	-	-	-	-	1338685-1	PAWL, FEED	56
-	-	-	-	-	-	-	-	-	55
-	4	4	4	4	4	-	18024-8	SCR, BTN SKT HD CAP (M4 X 12.0)	54
-	2	2	2	2	2	-	1-18023-2	SCR, SKT HD CAP M4 X 12.0	53
-	-	-	-	-	-	-	18030-1	NUT, HEX, REG M3	52
-	-	-	-	-	-	-	811242-5	BUMPER, HOLD DOWN	51
-	-	-	-	-	-	-	690753-2	SPACER, TONKER	50
-	-	-	-	-	-	-	18024-3	SCR, BTN SKT HD CAP (M3 X 10.0)	49
-	-	-	-	-	-	-	1338675-1	CAM, UNIVERSAL PRE FEED	48
-	-	-	-	-	-	-	1338676-1	CAM, UNIVERSAL POST-FEED	47
-	-	-	-	-	-	-	1320999-3	APPLICATOR SUBASSEMBLY, HDI	46
-	-	-	-	-	-	-	690191-1	PLUG, NYLON	45
-	-	-	-	-	-	-	1338660-5	RAM	44
-	-	-	-	-	-	-	-	-	43
-	-	-	-	-	-	-	-	-	42
-	-	-	-	-	-	-	2-18024-6	SCR, BTN SKT HD CAP (M8 X 25.0)	41
-	-	-	-	-	-	-	-	-	40
-	-	-	-	-	-	-	690125-1	SHIM SUB-ASSY	39
-	-	-	-	-	-	-	469367-8	SHIM	38
-	-	-	-	-	-	-	879103-3	FINE ADJUST HEAD ASSEMBLY	37
-	-	-	-	-	-	-	-	-	36
-	-	-	-	-	-	-	-	-	35
-	-	-	-	-	-	-	1320934-5	SUPPORT, TERMINAL	34
-	2	2	2	2	2	-	1-18024-0	SCR, BTN SKT HD CAP (M4 X 20.0)	33
-	-	-	-	-	-	-	18027-2	WASHER, FLAT, REG M4	32
-	-	-	-	-	-	-	1-18023-2	SCR, SKT HD CAP M4 X 12.0	31
-	-	-	-	-	-	-	1320908-4	SPACER, STRIP GUIDE	30
-	-	-	-	-	-	-	1633073-1	STRIP GUIDE ASSEMBLY	29
-	-	-	-	-	-	-	1-455888-0	SPACER, CRIMPER	28
-	2	2	2	2	2	-	1-22284-0	SPRING, COMPRESSION	27
-	-	-	-	-	-	-	356835-1	LEVER, DRAG RELEASE	26
-	-	-	-	-	-	-	240792-1	DRAG, TERMINAL	25
-	-	-	-	-	-	-	1320928-1	PLATE, STRIP GUIDE	24
-	-	-	-	-	-	-	980371-4	SCR, SKT HD SHLDR 5.0 DIA X 6.0	23
-	-	-	-	-	-	-	690472-2	STRIPPER	22
-	-	-	-	-	-	-	1-18023-1	SCR, SKT HD CAP M4 X 10.0	21
-	4	4	4	4	4	-	18025-2	WASHER, SPRG LOCK, REG M4	20
-	-	-	-	-	-	-	690472-1	STRIPPER	19
-	-	-	-	-	-	-	-	-	18
-	-	-	-	-	-	-	1338684-1	SHEAR HOLDER, FRONT	17
-	-	-	-	-	-	-	-	-	16
-	-	-	-	-	-	-	-	-	15
-	-	-	-	-	-	-	-	-	14
-	-	-	-	-	-	-	-	-	13
-	-	-	-	-	-	-	3-22280-3	SPRING, COMPRESSION	12
-	-	-	-	-	-	-	356885-4	STOP, SHEAR	11
-	-	-	-	-	-	-	1320921-1	SHEAR HOLDER, FRONT, CUT	10
-	-	-	-	-	-	-	462006-1	FLOATING SHEAR, FRONT	9
△	1	2	2	2	1	1	1-1333225-4	ANVIL, COMBINATION	8
-	-	-	-	-	-	-	-	-	7
-	-	-	-	-	-	-	-	-	6
-	-	-	-	-	-	-	3-455889-6	DEPRESSOR, SHEAR	5
-	-	-	-	-	-	-	238011-6	BLOCK, CRIMPER SPACER	4
△	1	2	2	2	1	1	3-683454-4	CRIMPER, INSULATION 0	3
-	-	-	-	-	-	-	-	-	2
△	1	2	2	2	1	1	6-568176-8	CRIMPER, WIRE	1

ITEM NO	PART NO	DESCRIPTION
84	-	-
83	-	-
82	-	-
81	-	-
80	-	-
79	-	-
78	-	-
77	-	-
76	-	-
75	-	-
74	-	-
ITEM NO	PART NO	DESCRIPTION
-77	-76	-72
-71	-6	-2
-1	-	-

DIMENSIONS: mm [IN] 	TOLERANCES UNLESS OTHERWISE SPECIFIED: 0 PLC ± 1 PLC ± 2 PLC ± 3 PLC ± 4 PLC ± ANGLES ±	APPL: M. CLIFFORD PRODUCT SPEC APPLICATION SPEC See Table WEIGHT: - FINISH: -	DATE: 06DEC2007 DSN: L. LOFTHOUSE TITLE: FINE ADJUST SIDE FEED HDI APPLICATOR DRAWING NO: 00779 SCALE: 3:5	Tyco Electronics Harrisburg, PA 17105-3608 RESTRICTED TO: - SHEET 1 OF 1
----------------------------	---	--	--	---