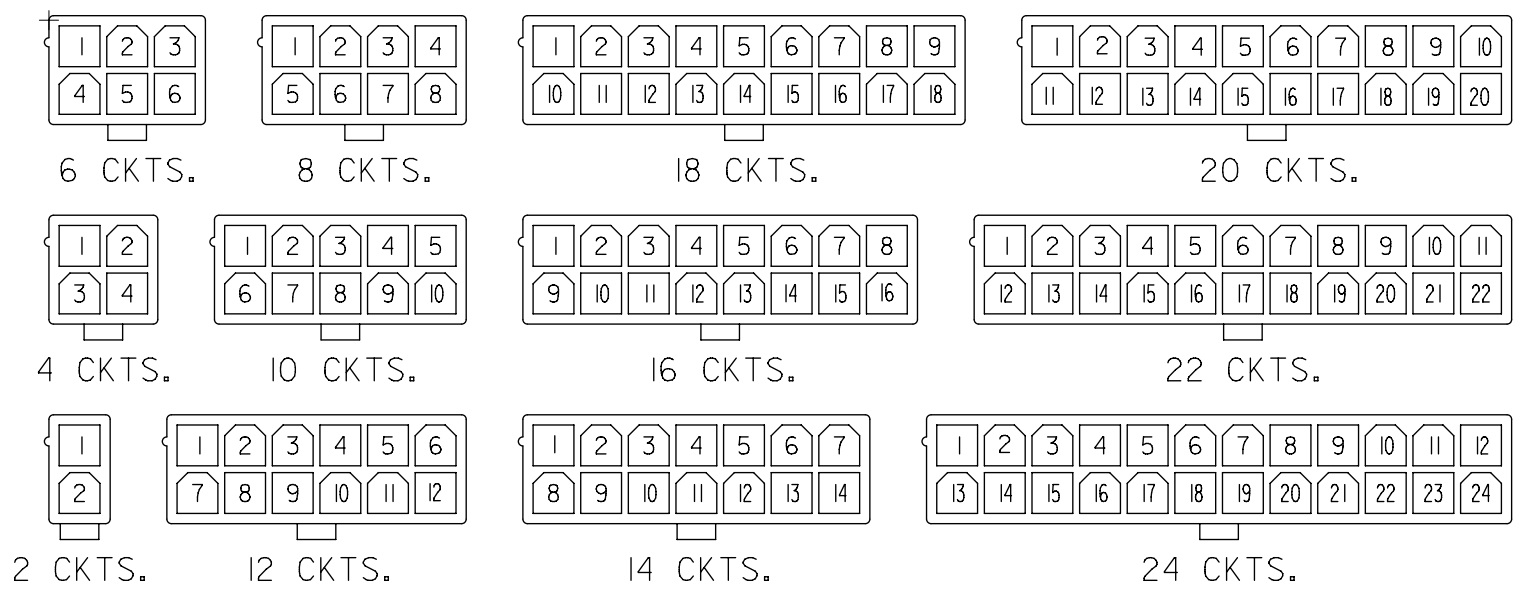
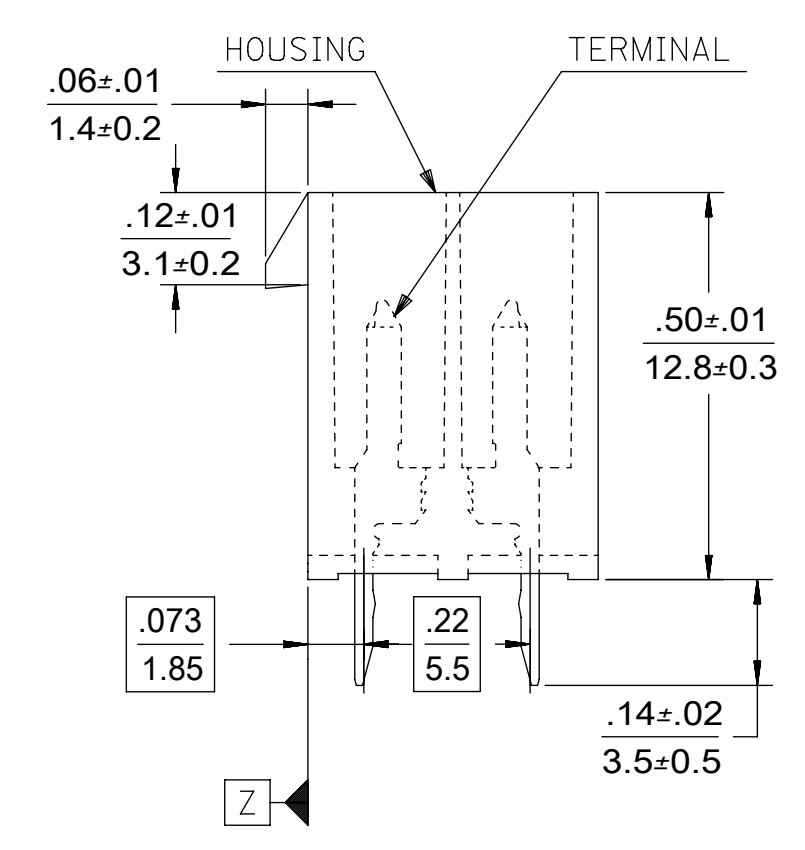
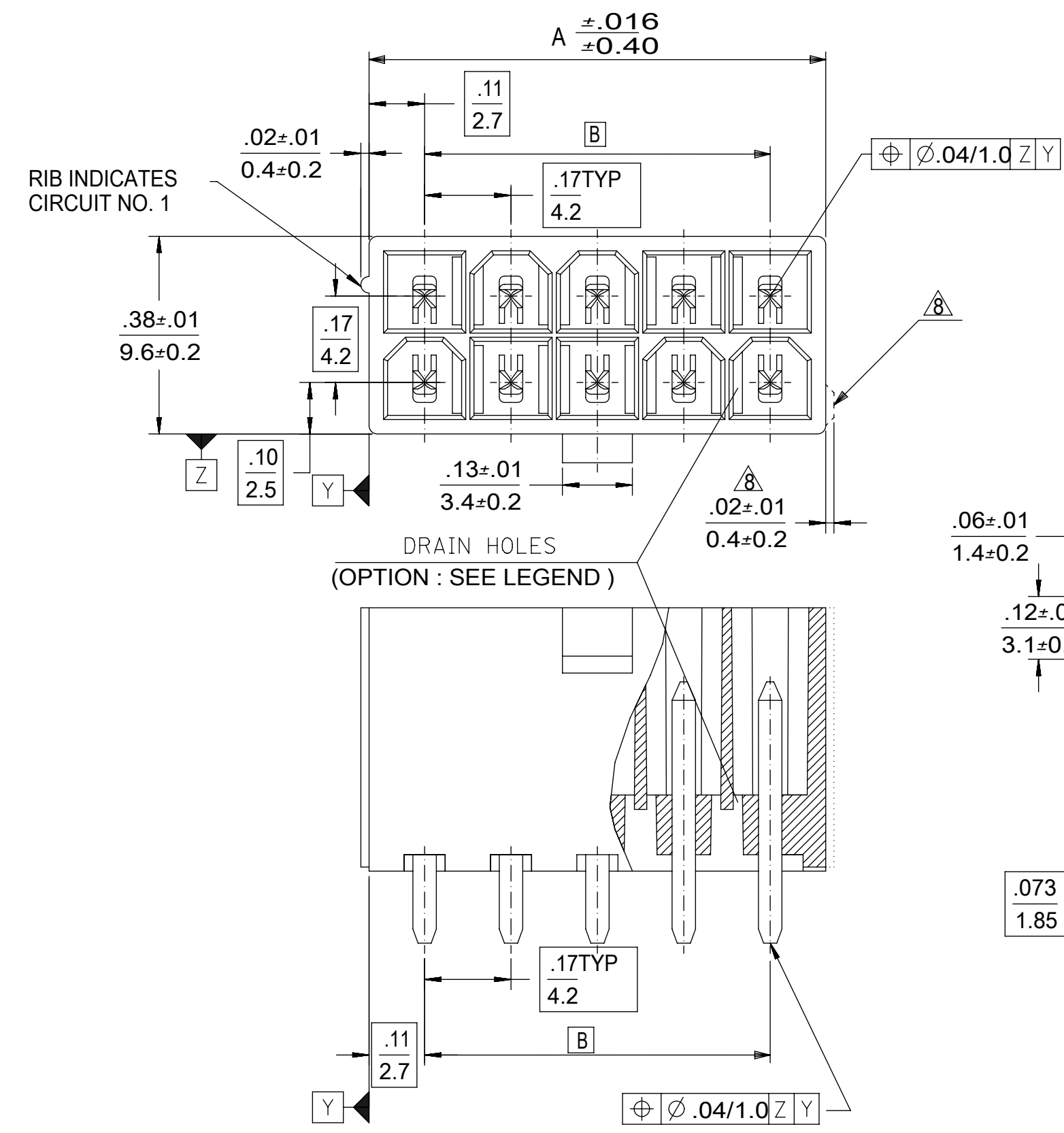


CIRCUIT SIZE	DIM. "A"	DIM. "B"
2	.21 (5.4)	—
4	.38 (9.6)	.17 (4.2)
6	.54 (13.8)	.33 (8.4)
8	.71 (18.0)	.50 (12.6)
10	.87 (22.2)	.66 (16.8)
12	1.04 (26.4)	.83 (21.0)
14	1.20 (30.6)	.99 (25.2)
16	1.37 (34.8)	1.16 (29.4)
18	1.54 (39.0)	1.32 (33.6)
20	1.70 (43.2)	1.49 (37.8)
22	1.87 (47.4)	1.65 (42.0)
24	2.03 (51.6)	1.82 (46.2)

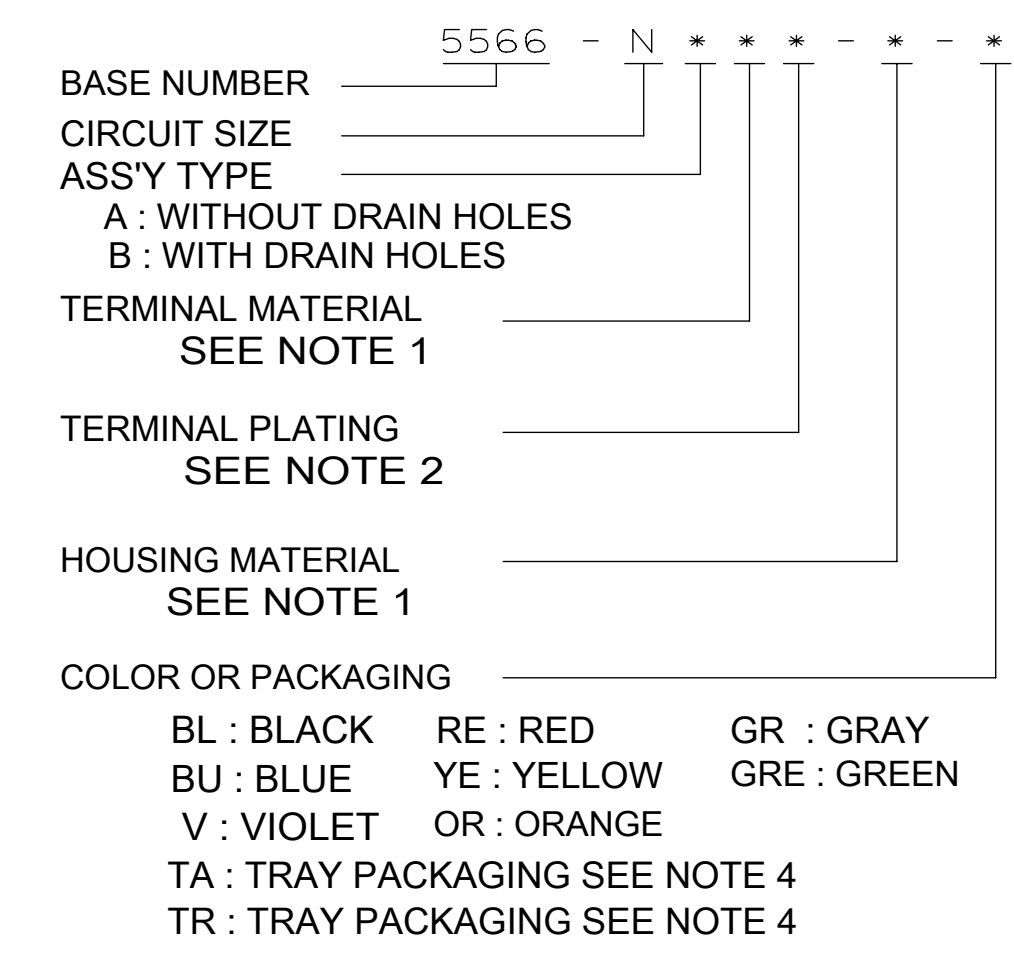


CIRCUIT SIZE LAYOUT



- NOTES:
- MATERIALS:
HOUSING:
"BLANK"=NYLON 6/6, UL94V-2, COLOR: NATURAL
"210" =NYLON 6/6, UL94V-0, COLOR: NATURAL
"400"=NYLON 6/6, UL94V-0, COLOR: BLACK
TERMINALS:
"BLANK" = BRASS
"PB" = PHOSPHOR BRONZE
 - TERMINAL PLATING:
"BLANK" = REFLOWED MATTE TIN .000035/(0.00090) MIN.
OVER COPPER .000020/(0.00050) MIN. (BRASS) (PREPLATE)
OR REFLOWED MATTE TIN .000035/(0.00090) MIN. (PHOSPHOR BRONZE) (PREPLATE)
(FINISH IS BRIGHT IN APPEARANCE, THICKNESS AS APPLIED PRIOR TO REFLOW)
"S"=.000100/(0.00254) MIN. BRIGHT TIN OVER
.000050/(0.00127) MIN NICKEL
"MS"=.000100/(0.00254) MIN. MATTE TIN OVER
.000050/(0.00127) MIN NICKEL
"GS2"=.000015/(0.00038) MIN. SELECT GOLD AND
.000100/(0.00254) MIN. SELECT MATTE TIN
OVER .000050/(0.00127) MIN. NICKEL OVERALL
"GS"=.000030/(0.00076) MIN. SELECT GOLD AND
.000100/(0.00254) MIN. SELECT MATTE TIN
OVER .000050/(0.00127) MIN. NICKEL OVERALL
 - PRODUCT SPECIFICATION: PS-5556-001
 - PACKAGING: "BLANK"= BULK PACKED,
"TA"=TRAY PACK PER PK-5566-001, "TR"=TRAY PACK PER PK-5566
 - PART MATES WITH MINI-FIT JR. RECEPTACLE NO. 5557.
 - PART IS NOT DESIGNED FOR CURRENT SHARING.
 - PARTS ARE NOT DESIGNED TO BE MATED OR UN-MATED WHILE CIRCUITS ARE LIVE.
 - ANTI-SHINGLING RIB MAY OR MAY NOT APPEAR ON HOUSINGS.
 - PART CONFORMS TO CLASS "B" REQUIREMENTS OF COSMETIC SPECIFICATION PS-45499-002.
 - TEXT ON PART IS FOR REFERENCE ONLY. TEXT AND TEXT LOCATION MAY VARY DEPENDING ON PART NUMBER AND/OR TOOL.

LEGEND



QUALITY SYMBOLS		THIS DRAWING CONTAINS INFORMATION THAT IS PROPRIETARY TO MOLEX ELECTRONIC TECHNOLOGIES, LLC AND SHOULD NOT BE USED WITHOUT WRITTEN PERMISSION		DIMENSION UNITS		SCALE		molex®																										
▽ = 0	▽ = 0	2017/08/11	2017/08/18	GENERAL TOLERANCES (UNLESS SPECIFIED)	IN/MM	4:1	<table border="1"> <tr> <td colspan="3">MINI FIT JR VERTICAL HEADER ASSEMBLIES WITHOUT PEGS</td> </tr> <tr> <td colspan="3">PRODUCT CUSTOMER DRAWING</td> </tr> <tr> <td>SERIES</td> <td>MATERIAL NUMBER</td> <td>CUSTOMER</td> </tr> <tr> <td>5566</td> <td>SEE TABLE</td> <td>GENERAL MARKET</td> </tr> <tr> <td colspan="3">DOCUMENT NUMBER</td> <td>DOC TYPE</td> <td>DOC PART</td> <td>SHEET NUMBER</td> <td colspan="5">SD-5566-002 PSD 000 1 OF 5</td> </tr> </table>					MINI FIT JR VERTICAL HEADER ASSEMBLIES WITHOUT PEGS			PRODUCT CUSTOMER DRAWING			SERIES	MATERIAL NUMBER	CUSTOMER	5566	SEE TABLE	GENERAL MARKET	DOCUMENT NUMBER			DOC TYPE	DOC PART	SHEET NUMBER	SD-5566-002 PSD 000 1 OF 5				
MINI FIT JR VERTICAL HEADER ASSEMBLIES WITHOUT PEGS																																		
PRODUCT CUSTOMER DRAWING																																		
SERIES	MATERIAL NUMBER	CUSTOMER																																
5566	SEE TABLE	GENERAL MARKET																																
DOCUMENT NUMBER			DOC TYPE	DOC PART	SHEET NUMBER	SD-5566-002 PSD 000 1 OF 5																												
▽ = 0	▽ = 0	ADD PINS	EC NO: 120605	MM	INCH	DRWN BY	DATE																											
▽ = 0	▽ = 0	EC NO: 120605	DRWN: ZHARPER	4 PLACES ±	±	H.HIRAMOTO	1989/04/03																											
▽ = 0	▽ = 0	DRWN: ZHARPER	CHKD: JBELL	3 PLACES ±	± 0.005	CHK'D BY	DATE																											
▽ = 0	▽ = 0	DRWN: ZHARPER	CHKD: JBELL	2 PLACES ±	± 0.13 ± 0.01	M.FUKUSHIMA	1994/04/20																											
▽ = 0	▽ = 0	DRWN: ZHARPER	CHKD: JBELL	1 PLACES ±	± 0.25 ±	APPR BY	DATE																											
▽ = 0	▽ = 0	DRWN: ZHARPER	CHKD: JBELL	0 PLACES ±	±	FSMITH	2012/05/04																											
▽ = 0	▽ = 0	DRWN: ZHARPER	CHKD: JBELL	ANGULAR TOL = 0.5		DRAWING SIZE	THIRD ANGLE PROJECTION																											
▽ = 0	▽ = 0	DRWN: ZHARPER	CHKD: JBELL	DRAFT WHERE APPLICABLE MUST REMAIN WITHIN DIMENSIONS		C																												
▽ = 0	▽ = 0	DRWN: ZHARPER	CHKD: JBELL																															

RELEASE STATUS	RELEASE DATE
12	11

	12	11	10	9	8	7	6	5	4	3	2	1	
				39-30-9245	5566-24AGS2-210	39-29-6248	5566-24AGS-210				39-28-8240	5566-24A-210	24
				39-30-9225	5566-22AGS2-210	39-29-6228	5566-22AGS-210				39-28-8220	-22A-210	22
				39-30-9205	5566-20AGS2-210	39-29-6208	5566-20AGS-210				39-28-8200	-20A-210	20
				39-30-9185	5566-18AGS2-210	39-29-6188	5566-18AGS-210				39-28-8180	-18A-210	18
				39-30-9165	5566-16AGS2-210	39-29-6168	5566-16AGS-210	39-30-6162	5566-16AS-210		39-28-8160	-16A-210	16
				39-30-9145	5566-14AGS2-210	39-29-6148	5566-14AGS-210				39-28-8140	-14A-210	14
				39-30-9125	5566-12AGS2-210	39-29-6128	5566-12AGS-210				39-28-8120	-12A-210	12
				39-30-9105	5566-10AGS2-210	39-29-6108	5566-10AGS-210				39-28-8100	-10A-210	10
				39-30-9085	5566-08AGS2-210	39-29-6088	5566-08AGS-210	39-30-6082	5566-08AS-210		39-28-8080	-08A-210	8
				39-30-9065	5566-06AGS2-210	39-29-6068	5566-06AGS-210	39-30-6062	5566-06AS-210		39-28-8060	-06A-210	6
				39-30-9045	5566-04AGS2-210	39-29-6048	5566-04AGS-210	39-30-6042	5566-04AS-210		39-28-8040	-04A-210	4
				39-30-9025	5566-02AGS2-210	39-29-6028	5566-02AGS-210				39-28-8020	5566-02A-210	2
	EDP NO.	ENG. NO.	EDP NO.	ENG. NO.	EDP NO.	ENG. NO.	EDP NO.	ENG. NO.	EDP NO.	ENG. NO.	EDP NO.	ENG. NO.	CKT. SIZE
	5566-NAPB-210		5566-NAGS2-210		5566-NAGS-210		5566-NAS-210		5566-NA-210				
	39-29-5246	5566-24APB	39-30-9244	5566-24AGS2	39-29-0243	5566-24AGS					39-28-1243	5566-24A	24
			39-30-9224	5566-22AGS2	39-29-0223	5566-22AGS					39-28-1223	5566-22A	22
			39-30-9204	5566-20AGS2	39-29-0203	5566-20AGS					39-28-1203	5566-20A	20
			39-30-9184	5566-18AGS2	39-29-0183	5566-18AGS					39-28-1183	5566-18A	18
			39-30-9164	5566-16AGS2	39-29-0163	5566-16AGS					39-28-1163	5566-16A	16
	39-29-5146	5566-14APB	39-30-9144	5566-14AGS2	39-29-0143	5566-14AGS					39-28-1143	5566-14A	14
			39-30-9124	5566-12AGS2	39-29-0123	5566-12AGS					39-28-1123	5566-12A	12
	39-29-5106	5566-10APB	39-30-9104	5566-10AGS2	39-29-0103	5566-10AGS	39-30-6101	5566-10AS			39-28-1103	5566-10A	10
	39-29-5086	5566-08APB	39-30-9084	5566-08AGS2	39-29-0083	5566-08AGS	39-30-6081	5566-08AS			39-28-1083	5566-08A	8
	39-29-5066	5566-06APB	39-30-9064	5566-06AGS2	39-29-0063	5566-06AGS					39-28-1063	5566-06A	6
	39-29-5046	5566-04APB	39-30-9044	5566-04AGS2	39-29-0043	5566-04AGS					39-28-1043	5566-04A	4
	39-29-5026	5566-02APB	39-30-9024	5566-02AGS2	39-29-0023	5566-02AGS					39-28-1023	5566-02A	2
	EDP NO.	ENG. NO.	EDP NO.	ENG. NO.	EDP NO.	ENG. NO.	EDP NO.	ENG. NO.	EDP NO.	ENG. NO.	EDP NO.	ENG. NO.	CKT. SIZE
	5566-NAPB		5566-NAGS2		5566-NAGS		5566-NAS		5566-NA				

PARTS WITHOUT DRAIN HOLES

QUALITY SYMBOLS 	THIS DRAWING CONTAINS INFORMATION THAT IS PROPRIETARY TO MOLEX ELECTRONIC TECHNOLOGIES, LLC AND SHOULD NOT BE USED WITHOUT WRITTEN PERMISSION												
	ADD PINS EC NO: 120605 DRWN: ZHARPER CHKD: JBELL APPR: FSMITH	GENERAL TOLERANCES (UNLESS SPECIFIED)				DIMENSION UNITS IN/MM		SCALE 1:1					
		4 PLACES ±		3 PLACES ±		2 PLACES ±		1 PLACES ±					
		MM		INCH		DRWN BY H.HIRAMOTO		DATE 1989/04/03		MINI FIT JR VERTICAL HEADER ASSEMBLIES WITHOUT PEGS			
		± 0.005		± 0.01		CHK'D BY M.FUKUSHIMA		DATE 1994/04/20					
		ANGULAR TOL = 0.5				APPR BY FSMITH		DATE 2012/05/04		PRODUCT CUSTOMER DRAWING			
		DRAFT WHERE APPLICABLE MUST REMAIN WITHIN DIMENSIONS				DRAWING SIZE C		THIRD ANGLE PROJECTION					
		SERIES 5566		MATERIAL NUMBER SEE TABLE				CUSTOMER GENERAL MARKET					
		DOCUMENT NUMBER SD-5566-002						DOC TYPE PSD		DOC PART 000		SHEET NUMBER 2 OF 5	

12	11	10	9	8	7	6	5	4	3	2	1
											24
											22
											20
											18
							39-31-0168	5566-16BGS-210	39-31-0160	5566-16B-210	16
							39-31-0148	5566-14BGS-210	39-31-0140	5566-14B-210	14
							39-31-0128	5566-12BGS-210	39-31-0120	5566-12B-210	12
							39-31-0108	5566-10BGS-210	39-31-0100	5566-10B-210	10
							39-31-0088	5566-08BGS-210	39-31-0080	5566-08B-210	8
							39-31-0068	5566-06BGS-210	39-31-0060	5566-06B-210	6
							39-31-0048	5566-04BGS-210	39-31-0040	5566-04B-210	4
							39-31-0028	5566-02BGS-210	39-31-0020	5566-02B-210	2
							EDP NO.	ENG. NO.	EDP NO.	ENG. NO.	CKT. SIZE
							5566-NBGS-210		5566-NB-210		

											24	
											22	
							39-31-0207	5566-20BGS	39-29-3206	5566-20B	20	
											18	
							39-31-0167	5566-16BGS	39-29-3166	5566-16B	16	
							39-31-0147	5566-14BGS	39-29-3146	5566-14B	14	
									39-29-3126	5566-12B	12	
							39-31-0107	5566-10BGS	39-29-3106	5566-10B	10	
							39-31-0087	5566-08BGS	39-29-3086	5566-08B	8	
							39-31-0067	5566-06BGS	39-29-3066	5566-06B	6	
						39-30-9046	5566-04BGS2	39-31-0047	5566-04BGS	39-29-3046	5566-04B	4
								39-31-0027	5566-02BGS	39-29-3026	5566-02B	2
							EDP NO.	ENG. NO.	EDP NO.	ENG. NO.	CKT. SIZE	
							5566-NBGS2		5566-NBGS		5566-NB	

PENDING OBSOLETE

PARTS WITH DRAIN HOLES



-NOT RECOMENDED FOR NEW APPLICATIONS

QUALITY SYMBOLS		THIS DRAWING CONTAINS INFORMATION THAT IS PROPRIETARY TO MOLEX ELECTRONIC TECHNOLOGIES, LLC AND SHOULD NOT BE USED WITHOUT WRITTEN PERMISSION												
	= 0	ADD PINS EC NO: 120605 DRWN: ZHARPER CHKD: JBELL REV APPR: FSMITH 2017/08/18 2017/08/18 2017/08/18	GENERAL TOLERANCES (UNLESS SPECIFIED)				DIMENSION UNITS		SCALE	 MINI FIT JR VERTICAL HEADER ASSEMBLIES WITHOUT PEGS PRODUCT CUSTOMER DRAWING SERIES: 5566 MATERIAL NUMBER: SEE TABLE CUSTOMER: GENERAL MARKET DOCUMENT NUMBER: SD-5566-002 DOC TYPE: PSD DOC PART: 000 SHEET NUMBER: 3 OF 5				
	= 0		MM		INCH		IN/MM		1:1					
	= 0		4 PLACES ±		±		DRWN BY		DATE					
	= 0		3 PLACES ±		± 0.005		H.HIRAMOTO		1989/04/03					
	= 0		2 PLACES ±		± 0.13 ± 0.01		CHK'D BY		DATE					
	= 0		1 PLACES ±		± 0.25 ±		M.FUKUSHIMA		1994/04/20					
	= 0		0 PLACES ±		±		APPR BY		DATE					
	= 0		ANGULAR TOL = 0.5				DRAFTING SIZE		THIRD ANGLE PROJECTION					
	= 0		DRAFT WHERE APPLICABLE MUST REMAIN WITHIN DIMENSIONS				C							
	= 0													

COLORED PART NUMBERS

TRAY PACKED PER TA Δ 4	46999-0575	5566-24AMS-400	TRAY PACKED PER TA Δ 4							24		
	46999-0574	5566-22AMS-400									22	
	46999-0573	5566-20AMS-400									20	
	46999-0572	5566-18AMS-400									18	
	46999-0571	5566-16AMS-400									16	
	46999-0570	5566-14AMS-400									14	
	46999-0569	5566-12AMS-400									12	
	46999-0568	5566-10AMS-400							46999-0087	5566-10AS-V		10
	46999-0567	5566-08AMS-400										8
	46999-0566	5566-06AMS-400										6
	46999-0565	5566-04AMS-400										4
	46999-0564	5566-02AMS-400										2
	EDP. NO.	ENG. NO.		EDP. NO.	ENG. NO.	EDP. NO.	ENG. NO.	EDP. NO.	ENG. NO.	EDP. NO.	ENG. NO.	CKT. SIZE
5566-NAMS-400		5566-NAMS-RE		5566-NAS-RE		5566-NAS-OR		5566-NAS-V		CKT. SIZE		
										24		
										22		
										20		
										18		
										16		
										14		
										12		
		46999-0876	5566-10AMS-RE							10		
				46999-0091	5566-08AS-GRE					8		
										6		
										4		
										2		
				50-36-2485	5566-02AS-GRE	39-34-5023	5566-02A-210-YE			2		
EDP. NO.	ENG. NO.	EDP. NO.	ENG. NO.	EDP. NO.	ENG. NO.	EDP. NO.	ENG. NO.	EDP. NO.	ENG. NO.	CKT. SIZE		
5566-NAMS-400		5566-NAMS-RE		5566-NAS-GRE		5566-NA-210-YE		5566-NA-400		CKT. SIZE		
										24		
										22		
										20		
										18		
										16		
		39-33-3145	5566-14A-GR						39-33-3143	5566-14A-BL	14	
										12		
				39-33-3106	5566-10A-RE	39-33-3104	5566-10A-BU			10		
				39-33-3087	5566-08A-YE	39-33-3086	5566-08A-RE			8		
				39-33-3067	5566-06A-YE	39-33-3066	5566-06A-RE	39-33-3064	5566-06A-BU	6		
						39-33-3046	5566-04A-RE	39-33-3044	5566-04A-BU	4		
				39-33-3027	5566-02A-YE	39-33-3026	5566-02A-RE	39-33-3024	5566-02A-BU	2		
EDP. NO.	ENG. NO.	EDP. NO.	ENG. NO.	EDP. NO.	ENG. NO.	EDP. NO.	ENG. NO.	EDP. NO.	ENG. NO.	CKT. SIZE		
5566-NA-GR		5566-NA-YE		5566-NA-RE		5566-NA-BU		5566-NA-BL		CKT. SIZE		

PARTS WITHOUT DRAIN HOLES

QUALITY SYMBOLS ∇ = 0 ∇ = 0 ∇ = 0 ∇ = 0 ∇ = 0 ∇ = 0 ∇ = 0 ∇ = 0 ∇ = 0 ∇ = 0	THIS DRAWING CONTAINS INFORMATION THAT IS PROPRIETARY TO MOLEX ELECTRONIC TECHNOLOGIES, LLC AND SHOULD NOT BE USED WITHOUT WRITTEN PERMISSION												
	ADD PINS EC NO: 120605 DRWN: ZHARPER CHKD: JBELL REV APPR: FSMITH	GENERAL TOLERANCES (UNLESS SPECIFIED)				DIMENSION UNITS		SCALE		 MINI FIT JR VERTICAL HEADER ASSEMBLIES WITHOUT PEGS PRODUCT CUSTOMER DRAWING SERIES: 5566 MATERIAL NUMBER: SEE TABLE CUSTOMER: GENERAL MARKET DOCUMENT NUMBER: SD-5566-002 DOC TYPE: PSD DOC PART: 000 SHEET NUMBER: 4 OF 5			
		IN/MM		1:1		DRWN BY		DATE					
		4 PLACES \pm		\pm		H.HIRAMOTO		1989/04/03					
		3 PLACES \pm		± 0.005		CHK'D BY		DATE					
		2 PLACES ± 0.13		± 0.01		M.FUKUSHIMA		1994/04/20					
		1 PLACES ± 0.25		\pm		APPR BY		DATE					
		0 PLACES \pm		\pm		FSMITH		2012/05/04					
		ANGULAR TOL = 0.5				DRAWING SIZE		THIRD ANGLE PROJECTION					
		DRAFT WHERE APPLICABLE MUST REMAIN WITHIN DIMENSIONS				C							

TRAY PACKED PART NUMBERS
PARTS WITHOUT DRAIN HOLES

TRAY PACKED PER TA \triangle 4	46999-0137	5566-24AMS	TRAY PACKED PER TA \triangle 4	46999-0149	5566-24AMS-210	24
	46999-0136	5566-22AMS		46999-0148	5566-22AMS-210	22
	46999-0135	5566-20AMS		46999-0147	5566-20AMS-210	20
	46999-0134	5566-18AMS		46999-0146	5566-18AMS-210	18
	46999-0133	5566-16AMS		46999-0145	5566-16AMS-210	16
	46999-0132	5566-14AMS		46999-0144	5566-14AMS-210	14
	46999-0131	5566-12AMS		46999-0143	5566-12AMS-210	12
	46999-0130	5566-10AMS		46999-0142	5566-10AMS-210	10
	46999-0129	5566-08AMS		46999-0141	5566-08AMS-210	8
	46999-0128	5566-06AMS		46999-0140	5566-06AMS-210	6
	46999-0127	5566-04AMS		46999-0139	5566-04AMS-210	4
	46999-0126	5566-02AMS		46999-0138	5566-02AMS-210	2
		EDP. NO.		ENG. NO.		EDP. NO.
5566-NAMS			5566-NAMS-210			

				24	
				22	
				20	
		39-53-9188	5566-18A-TA	18	
				16	
				14	
				12	
				10	
				8	
46999-0630	5566-06AGS2-BL-TA			6	
46999-0629	5566-04AGS2-BL-TA			4	
				2	
	EDP. NO.	ENG. NO.	EDP. NO.	ENG. NO.	CKT. SIZE
5566-NAGS2-BL-TA		5566-NA-TA			

QUALITY SYMBOLS (F) = 0 (E) = 0 (D) = 0 (C) = 0 (B) = 0 (A) = 0 (Z) = 0 (Y) = 0 (X) = 0 (W) = 0	THIS DRAWING CONTAINS INFORMATION THAT IS PROPRIETARY TO MOLEX ELECTRONIC TECHNOLOGIES, LLC AND SHOULD NOT BE USED WITHOUT WRITTEN PERMISSION	ADD PINS EC NO: 120605 DRWN: ZHARPER CHKD: JBELL REV APPR: FSMITH	GENERAL TOLERANCES (UNLESS SPECIFIED) <table border="1" style="width: 100%; border-collapse: collapse;"> <tr> <th colspan="2"></th> <th>MM</th> <th>INCH</th> </tr> <tr> <td>4 PLACES</td> <td>±</td> <td></td> <td>±</td> </tr> <tr> <td>3 PLACES</td> <td>±</td> <td></td> <td>± 0.005</td> </tr> <tr> <td>2 PLACES</td> <td>±</td> <td>0.13</td> <td>± 0.01</td> </tr> <tr> <td>1 PLACES</td> <td>±</td> <td>0.25</td> <td>±</td> </tr> <tr> <td>0 PLACES</td> <td>±</td> <td></td> <td>±</td> </tr> </table> ANGULAR TOL = 0.5 DRAFT WHERE APPLICABLE MUST REMAIN WITHIN DIMENSIONS			MM	INCH	4 PLACES	±		±	3 PLACES	±		± 0.005	2 PLACES	±	0.13	± 0.01	1 PLACES	±	0.25	±	0 PLACES	±		±	DIMENSION UNITS IN/MM	SCALE 1:1	DRWN BY H.HIRAMOTO	DATE 1989/04/03	<p>MINI FIT JR VERTICAL HEADER ASSEMBLIES WITHOUT PEGS</p> <p>PRODUCT CUSTOMER DRAWING</p> <table border="1" style="width: 100%; border-collapse: collapse; font-size: x-small;"> <tr> <td>SERIES</td> <td>MATERIAL NUMBER</td> <td>CUSTOMER</td> </tr> <tr> <td>5566</td> <td>SEE TABLE</td> <td>GENERAL MARKET</td> </tr> </table> <table border="1" style="width: 100%; border-collapse: collapse; font-size: x-small;"> <tr> <td>DOCUMENT NUMBER</td> <td>DOC TYPE</td> <td>DOC PART</td> <td>SHEET NUMBER</td> </tr> <tr> <td>SD-5566-002</td> <td>PSD</td> <td>000</td> <td>5 OF 5</td> </tr> </table>	SERIES	MATERIAL NUMBER	CUSTOMER	5566	SEE TABLE	GENERAL MARKET	DOCUMENT NUMBER	DOC TYPE	DOC PART	SHEET NUMBER	SD-5566-002	PSD	000	5 OF 5
		MM	INCH																																											
4 PLACES	±		±																																											
3 PLACES	±		± 0.005																																											
2 PLACES	±	0.13	± 0.01																																											
1 PLACES	±	0.25	±																																											
0 PLACES	±		±																																											
SERIES	MATERIAL NUMBER	CUSTOMER																																												
5566	SEE TABLE	GENERAL MARKET																																												
DOCUMENT NUMBER	DOC TYPE	DOC PART	SHEET NUMBER																																											
SD-5566-002	PSD	000	5 OF 5																																											