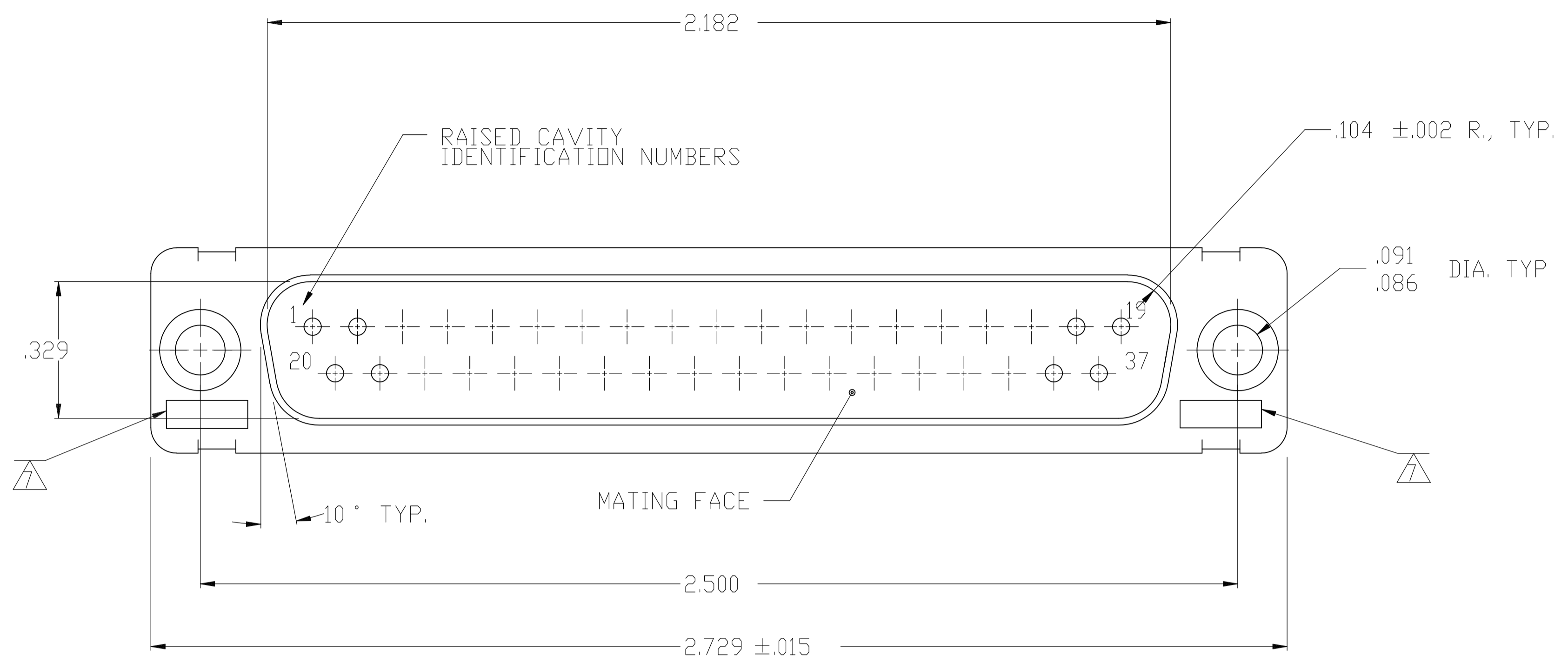
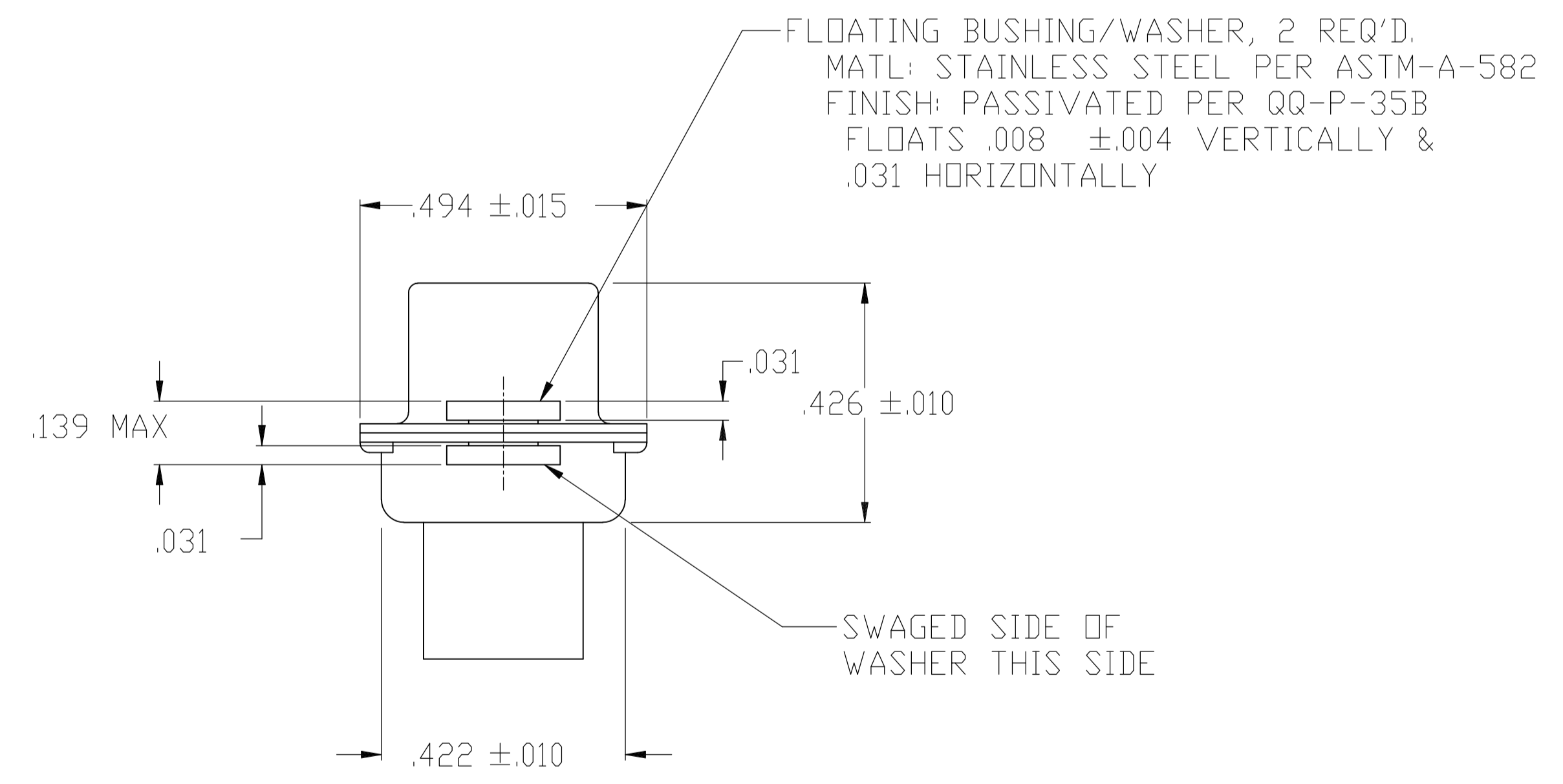
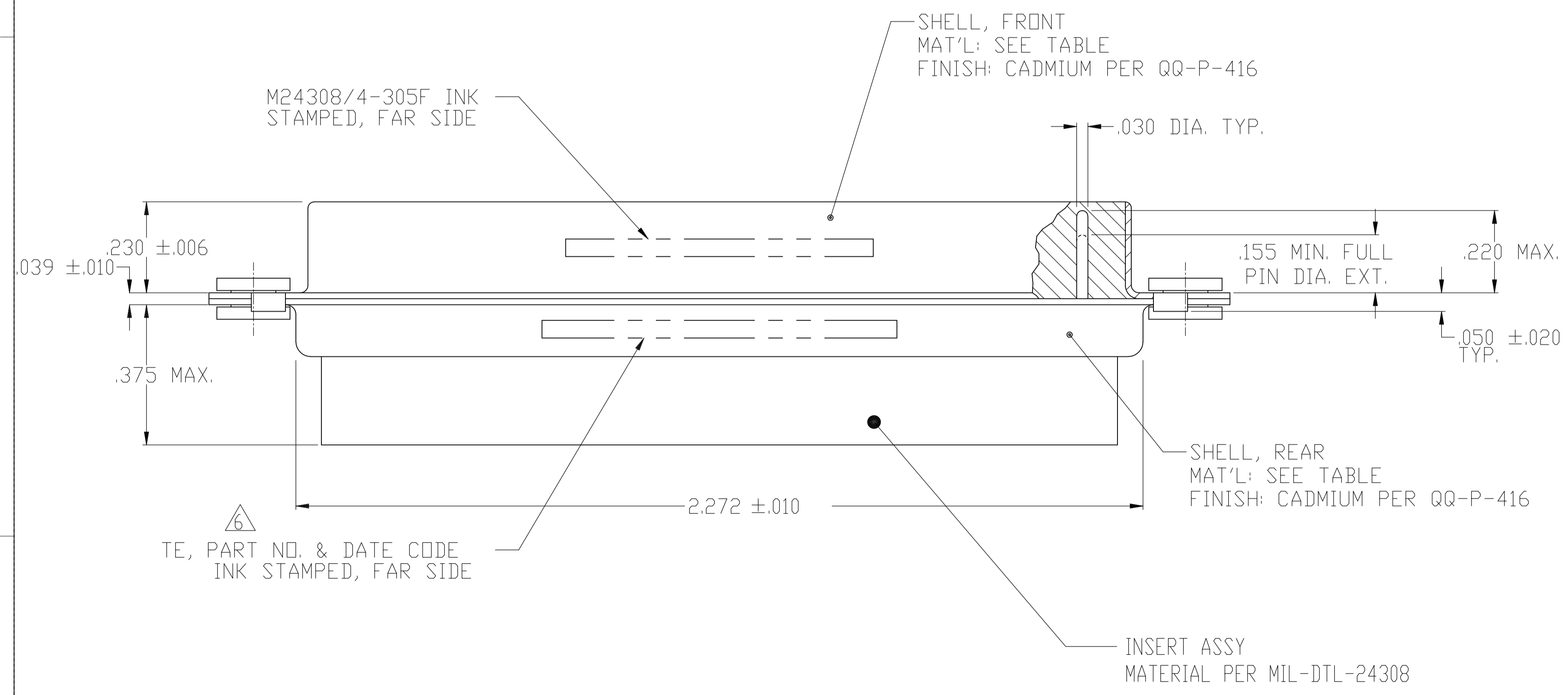


LOC		DIST		REVISIONS			
P	LTR	DESCRIPTION	DATE	DN	APVD		
N	REV PER	ECO-15-016062	10NOV15	KG	CD		



1. THIS PLUG IS DESIGNED TO CONFORM TO THE LATEST ISSUE OF MIL-C-24308
2. MAX WIRE INSUL. TO BE USED WITH THIS PLUG IS .068 DIA.
3. STAINLESS STEEL RETENTION CLIPS ARE INCLUDED IN INSERTS.
4. PACKAGE STAMPED M 24308/4-327F.
5. THIS PLUG WILL ACCEPT SIZE 20 PIN CONTACT M24308/11 OR AMP # 205089
6. TE PART NO. STAMPED ON CONNECTOR REPRESENTS KIT NUMBER WITH CONTACTS
7. UL/CSA DESIGNATION STAMPED IN THIS AREA.



OBSELETE	BRASS	205414-2
	STEEL PER ASTM-A-109	205414-1
	SHELL MAT'L	TE PART NO

THIS DRAWING IS A CONTROLLED DOCUMENT.

DIMENSIONS: INCHES	TOLERANCES UNLESS OTHERWISE SPECIFIED:	0. PLC ± -	1. PLC ± -	2. PLC ± -	3. PLC ± .005	4. PLC ANGLES ± # 0'30"
--------------------	--	------------	------------	------------	---------------	-------------------------

APPROVED: D.J.M. 12-OCT-87

NAME: AMPLE

PRODUCT SPEC: PLUG FOR PIN CONTACTS HI-DENSITY HDM-20 CONNECTOR SIZE 4 (37 POSN) SERIES 109 WITH FLOAT BUSHINGS

APPLICATION SPEC: -

SIZE: A1

CAGE CODE: 00779

DRAWING NO: 205414

RESTRICTED TO: -

CUSTOMER DRAWING

SCALE: 1:1

SHEET: 1 OF 1

REV: N