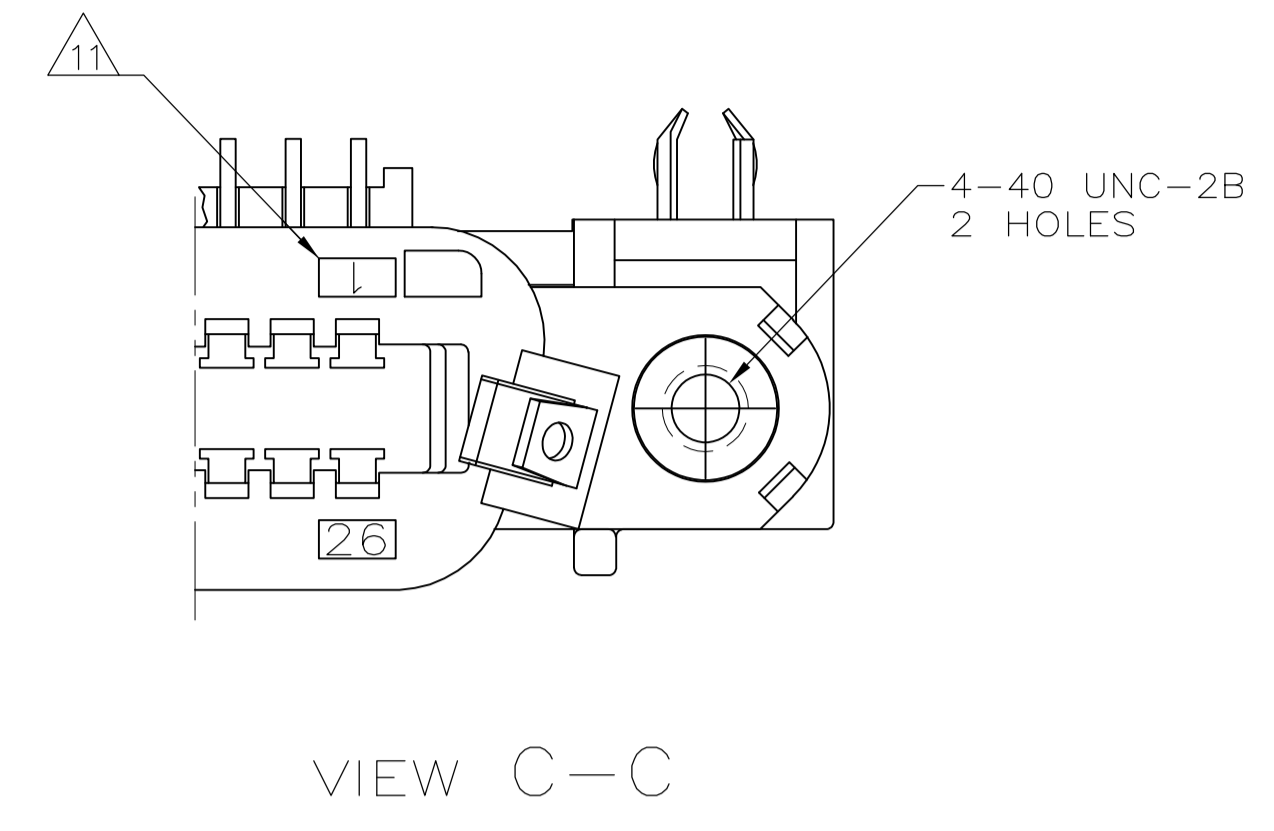
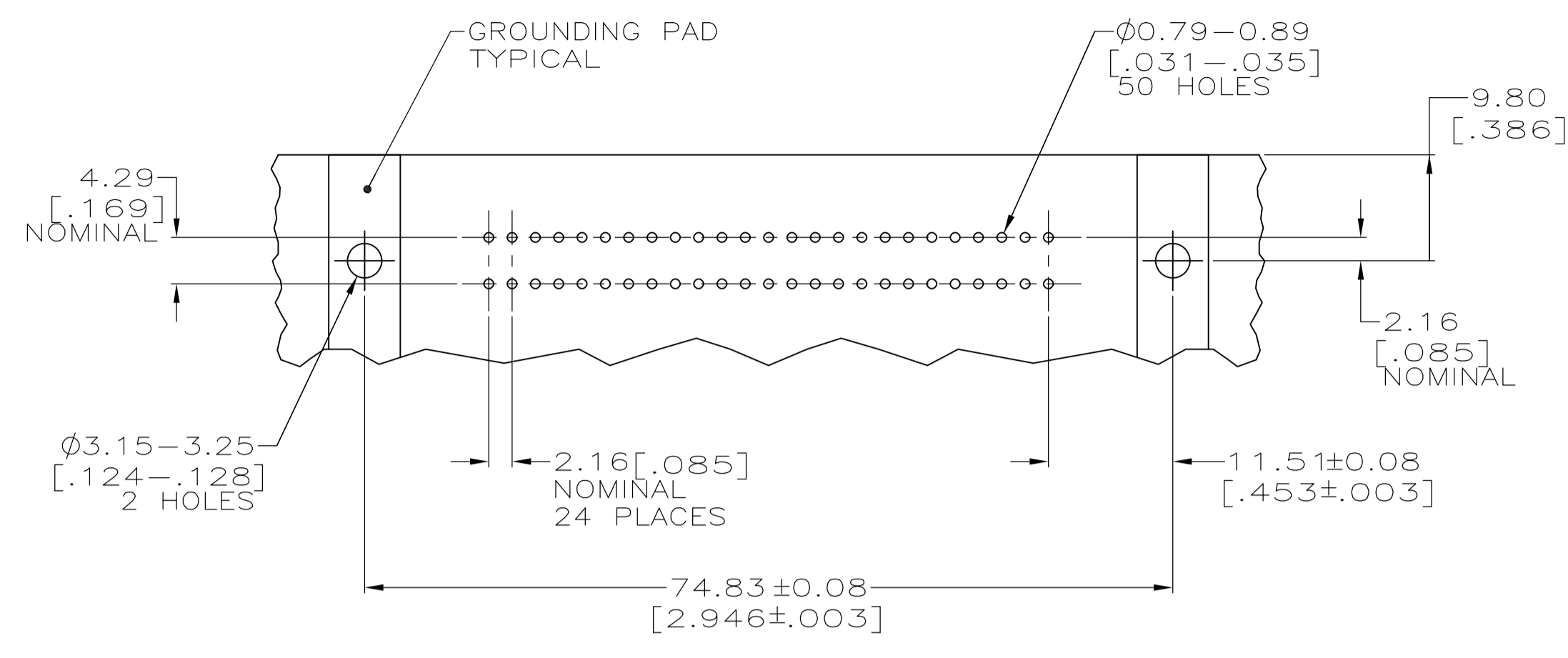
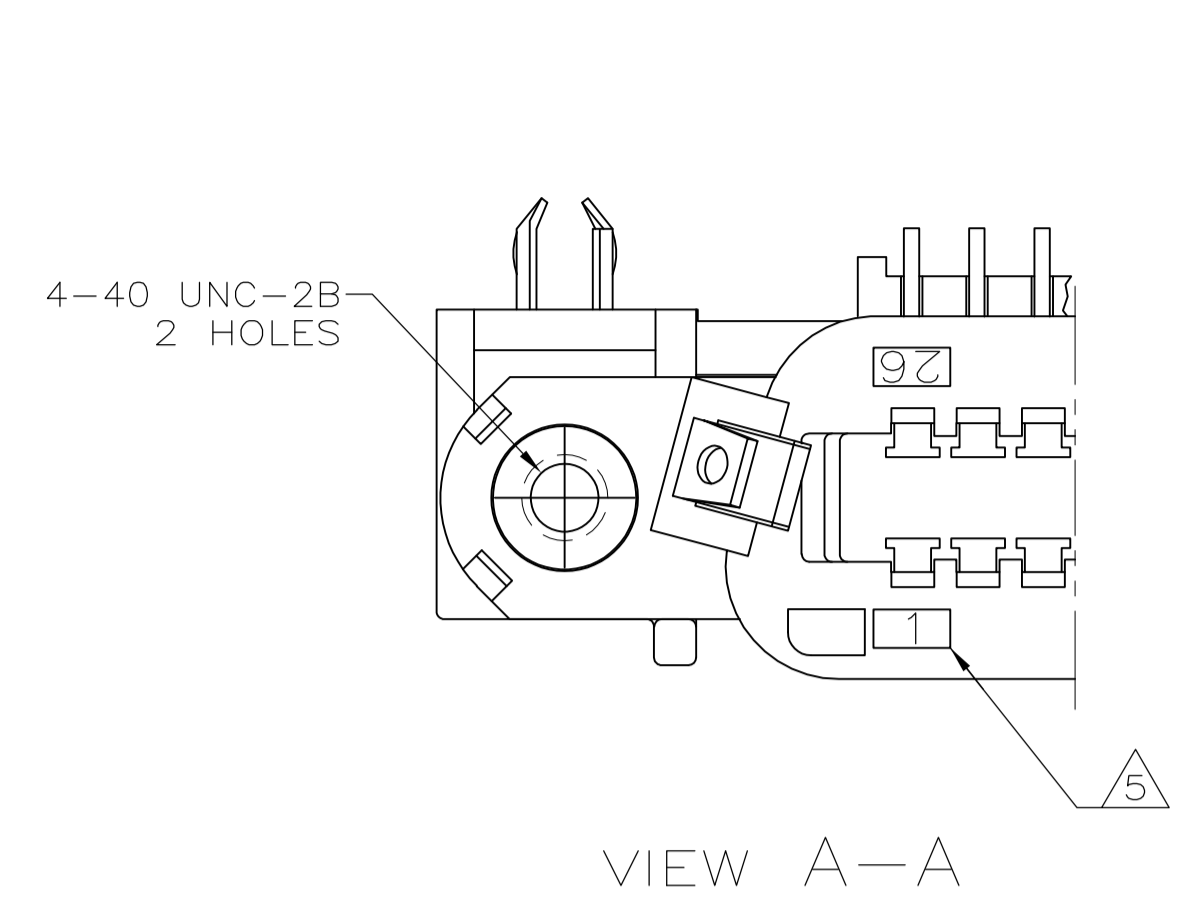
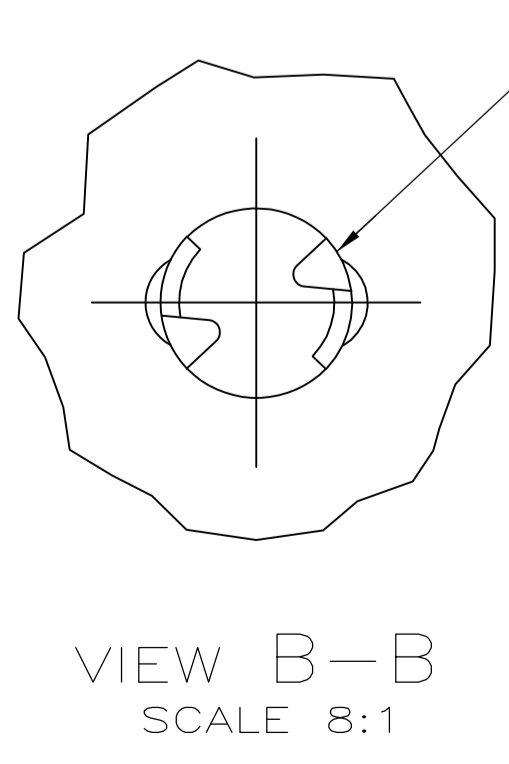
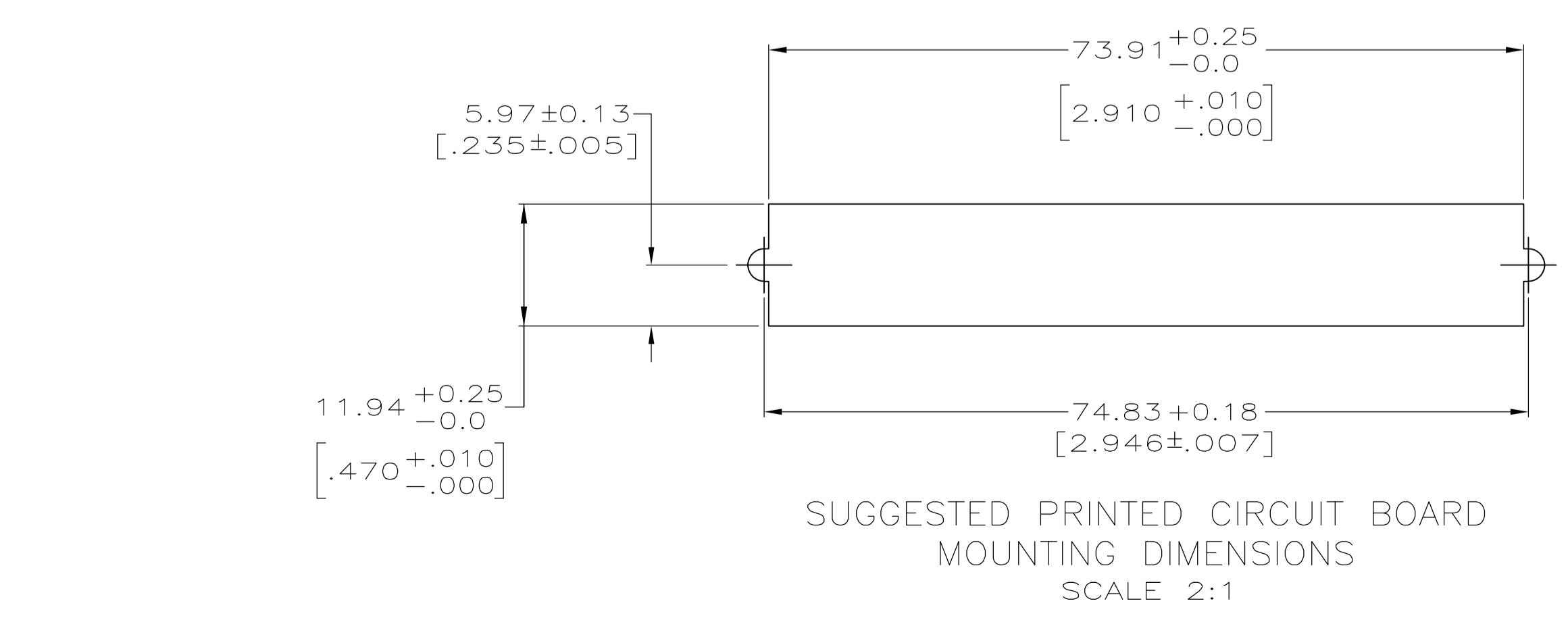
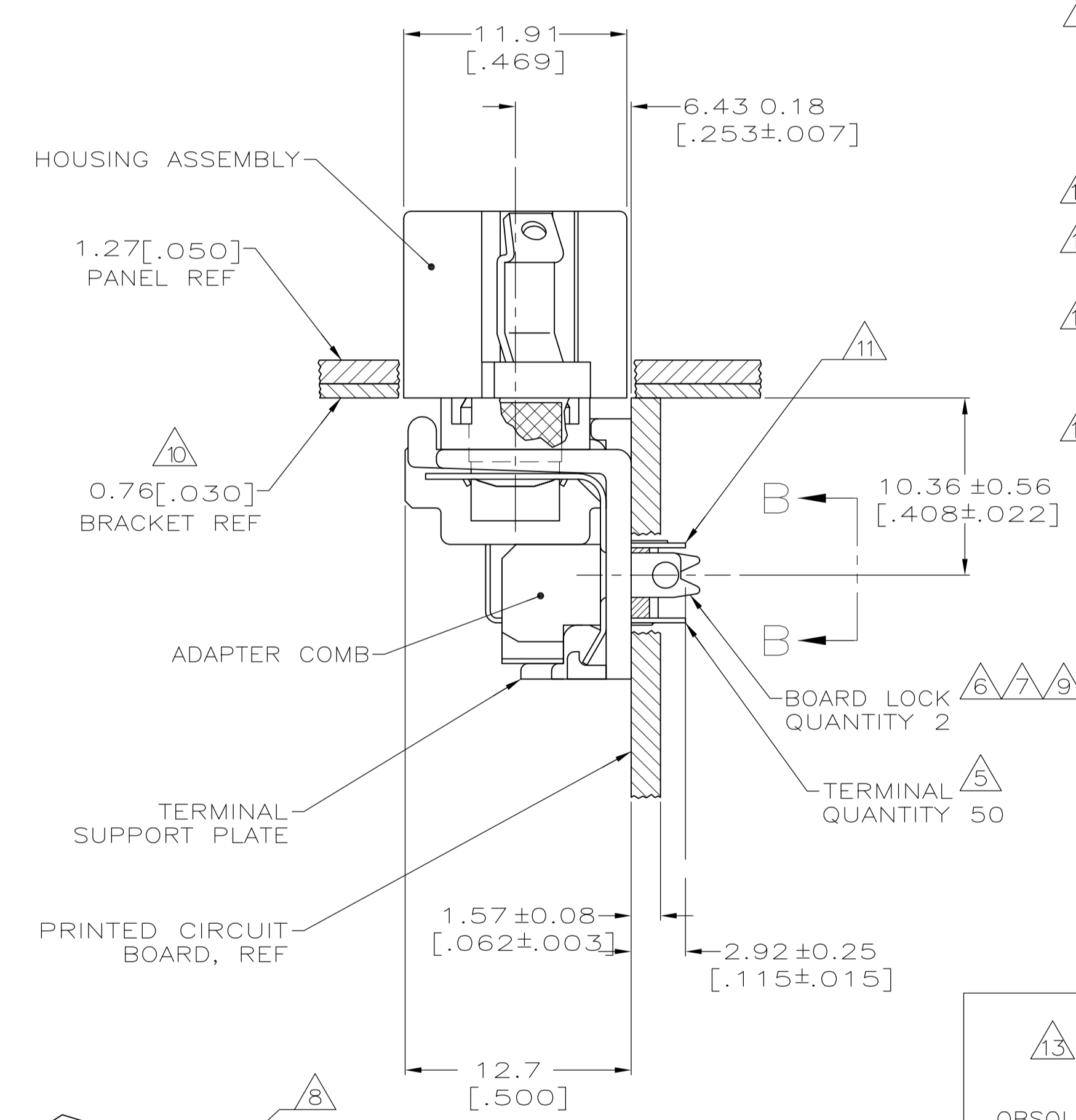
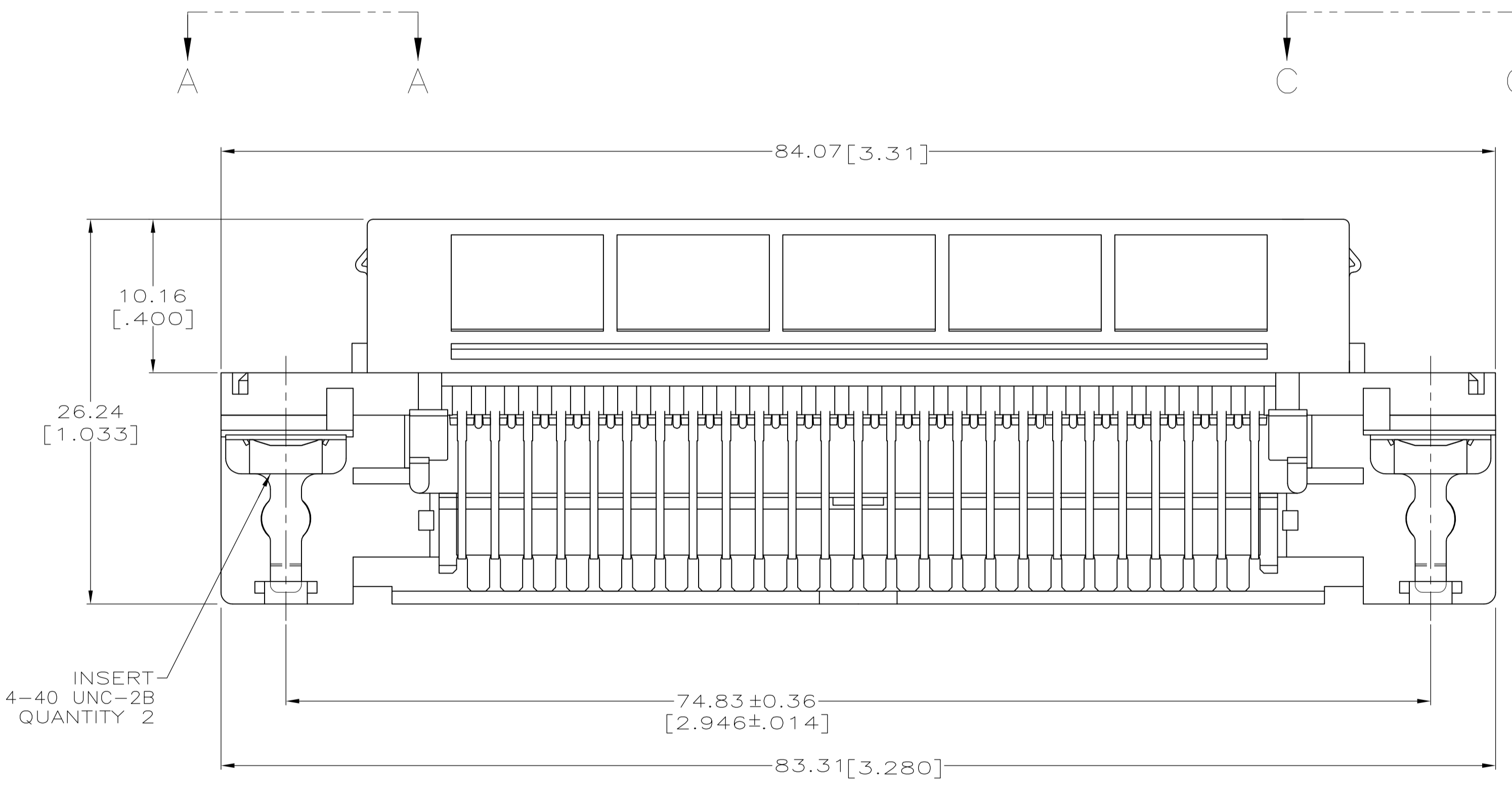


LOC		DIST		REVISIONS			
GP	00	REV	DATE	BY	CHK	APP	REV
B		REVISED PER ECO-08-007327	09APR08	BM	WM		
B1		REVISED PER ECO-10-000444	19JAN10	KK	HMR		



- 1. MATERIAL:
HOUSING, SUPPORT PLATE & ADAPTER COMB - POLYESTER, BLACK.
LATCH - ZINC PLATED CARBON STEEL.
INSERT - BRASS.
TERMINALS - HIGH STRENGTH COPPER ALLOY PLATED WITH EITHER 0.76μm [0.000030] MIN GOLD PLATE OR GOLD FLASH OVER PALLADIUM NICKEL PLATE, 0.76μm [0.000030] MIN TOTAL ON MATING SURFACE. 3.05μm [0.000120] MIN TIN PLATE ON TAILS. ALL OVER 1.27μm [0.000050] MIN NICKEL UNDERPLATE OVER ENTIRE TERMINAL.
BOARD LOCK - TIN PLATED CARBON STEEL.
- 2. THE CONTACT SURFACES OF THE TERMINALS ARE COATED WITH LUBRICANT.
- 3. CENTER-TO-CENTER SPACING OF TERMINALS IS 2.16 [.085] NOMINAL.
- 4. ALL DIMENSIONS SHOWN ARE MAXIMUM UNLESS OTHERWISE SPECIFIED.
- 5. TERMINAL 1 LOCATED IN THIS ROW FOR STANDARD ORIENTATION. SEE VIEW A-A.
- 6. BOARD LOCK RETAINS CONNECTOR IN 1.58 [.062] THICK PC BOARD WITHOUT ADDITIONAL HARDWARE.
- 7. BOARD LOCK LOCATES CONNECTOR FLUSH WITH TOP OF PC BOARD AND SPRING LOCKS BENEATH.
- 8. CYLINDRICAL SHAPE OFFERS 180° OF SOLERING SURFACE.
- 9. SURFACE AREA BELOW PC BOARD SHALL PASS SOLDERABILITY REQUIREMENTS IN ACCORDANCE WITH AMP SPEC 109-11-2. DISCOLORATION, SCRATCHES, SPOTS AND OTHER COSMETIC DEFICIENCIES TYPICAL OF BARREL PLATING PROCESSES ARE ACCEPTABLE PROVIDING PARTS PASS 24 HOUR EXPOSURE AT 95% RH AT 40°C WITHOUT EVIDENCE OF CORROSION.
- 10. BRACKET SUPPLIED BY CUSTOMER. (OPTIONAL)
- 11. TERMINAL 1 LOCATED IN THIS ROW FOR REVERSE ORIENTATION. SEE VIEW C-C.
- 12. ONE LATCH ONLY, LOCATED AT CIRCUIT 1/26 END, P/N 6116794-5 AND 6116794-6.
- 13. OBSOLETE PARTS: OBSOLETE CIS STREAMLINING PER D.RENAUD/D.SINISI



ORIENTATION	DESCRIPTION	PART NUMBER
REVERSE, SEE VIEW C-C	NO LATCHES	6116794-6
STANDARD, SEE VIEW A-A	NO LATCHES	6116794-5
REVERSE, SEE VIEW C-C	AS SHOWN	6116794-4
REVERSE, SEE VIEW C-C	AS SHOWN	6116794-3
STANDARD, SEE VIEW A-A	NO LATCHES	6116794-2
STANDARD, SEE VIEW A-A	AS SHOWN	6116794-1

THIS DRAWING IS A CONTROLLED DOCUMENT.		Tyco Electronics Corporation Harrisburg, PA 17105-3608	
DIMENSIONS: mm (INCHES)	TOLERANCES UNLESS OTHERWISE SPECIFIED:	REVISED BY: W. MILLHIMES	DATE: 01SEP05
0. PLC ± .005	1. PLC ± .005	2. PLC ± .005	3. PLC ± .005
4. PLC ± .005	ANGLES ± .005	DRAWING NO: 00779C=6116794	
MATERIAL: 1	FINISH: 1	WEIGHT: A1	RESTRICTED TO: 1
CUSTOMER DRAWING		SCALE: 4:1	SHEET: 1 OF 1 REV: B1