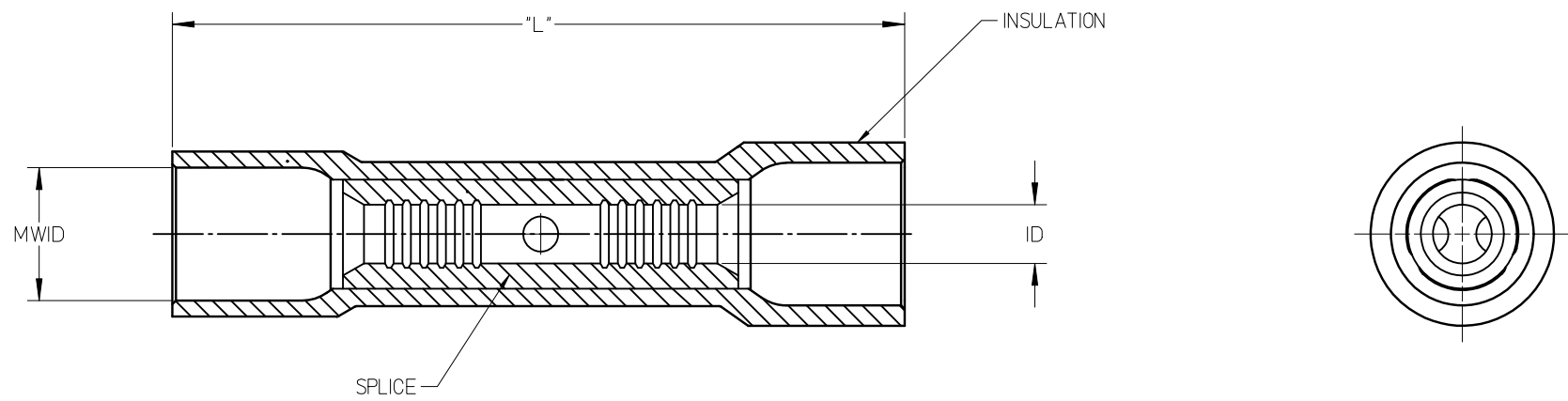


MATERIAL NUMBER	ENGINEERING NUMBER	WIRE SIZE AWG	INSULATION COLOR	SPLICE ID MIN	MWID	LENGTH "L" MAX
192020271	A-945X	22-18	RED	.055/ 1.40	.147/3.74	1.070/27.18
192020272	B-931X	16-14	BLUE	.078/ 1.98	.185/4.70	1.070/27.18
192020273	C-946X	12-10	YELLOW	.124/ 3.15	.261/6.63	1.150/29.21



- NOTES:
- SPLICE MATERIAL: COPPER
  - SPLICE FINISH: TIN
  - INSULATION MATERIAL: NYLON 6/6
  - MWID = MAXIMUM WIRE INSULATION DIAMETER
  - ASSEMBLY IS ROHS COMPLIANT.

INITIAL RELEASE EC NO: WNA2011-0271 DRAWN BY: ETHRODAHL 2011/02/07 CHKD: JMACNEIL 2011/02/08 APPR: JMACNEIL 2011/02/25	DESCRIPTION A	QUALITY SYMBOLS	GENERAL TOLERANCES (UNLESS SPECIFIED) <table border="1"> <thead> <tr> <th></th> <th>mm</th> <th>INCH</th> </tr> </thead> <tbody> <tr> <td>4 PLACES</td> <td>± .---</td> <td>± .---</td> </tr> <tr> <td>3 PLACES</td> <td>± .---</td> <td>± .005</td> </tr> <tr> <td>2 PLACES</td> <td>± 0.13</td> <td>± .010</td> </tr> <tr> <td>1 PLACE</td> <td>± 0.25</td> <td>± .020</td> </tr> <tr> <td colspan="3">ANGULAR ± ---°</td> </tr> </tbody> </table>		mm	INCH	4 PLACES	± .---	± .---	3 PLACES	± .---	± .005	2 PLACES	± 0.13	± .010	1 PLACE	± 0.25	± .020	ANGULAR ± ---°			DIMENSION STYLE	SCALE	DESIGN UNITS	THIRD ANGLE PROJECTION
				mm	INCH																				
		4 PLACES		± .---	± .---																				
		3 PLACES		± .---	± .005																				
2 PLACES	± 0.13	± .010																							
1 PLACE	± 0.25	± .020																							
ANGULAR ± ---°																									
	IN/MM	---	INCH																						
DRAWN BY DATE		TITLE																							
ETHRODAHL 2011/02/07		BUTT CONNECTOR, SEAMED NYLAKRIMP, 22-10 AWG EXPANDED FLARE																							
CHECKED BY DATE		MATERIAL NO.																							
JMACNEIL 2011/02/08		SEE CHART																							
APPROVED BY DATE		DOCUMENT NO.																							
JMACNEIL 2011/02/25		SD-19202-010																							
DRAFT WHERE APPLICABLE MUST REMAIN WITHIN DIMENSIONS		SHEET NO.																							
		1 OF 1																							
THIS DRAWING CONTAINS INFORMATION THAT IS PROPRIETARY TO MOLEX INCORPORATED AND SHOULD NOT BE USED WITHOUT WRITTEN PERMISSION																									