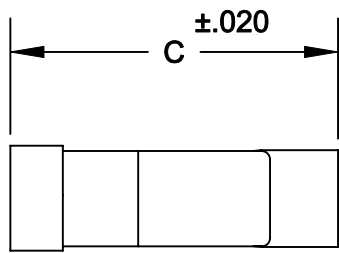
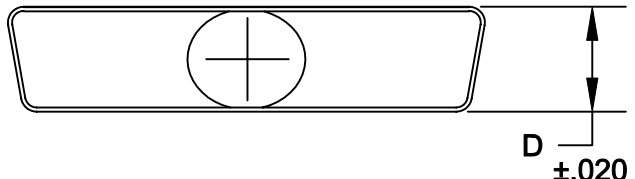
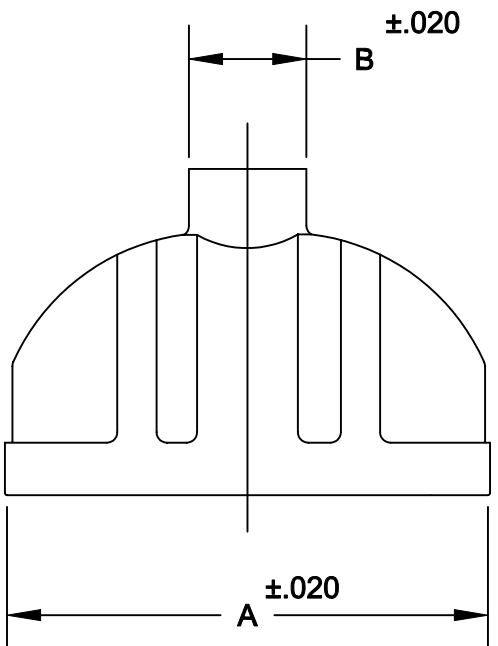


DESCRIPTION: 986 SERIES OVER-MOLD CANS



986-XXX-XXXLXX1

SERIES _____

POSITIONS _____

009 _____

015 _____

025 _____

037 _____

050 _____

MATERIAL _____

COLD ROLLED STEEL _____

PLATING: _____


12 = NICKEL _____

PUT-UPS _____

1 = KIT _____

| | A | B | C | D | MAX. CABLE DIA. |
|----|-------|-------|-------|-------|-----------------|
| 9 | .815 | .410 | 1.200 | .490 | .375 |
| | 20.70 | 10.41 | 30.48 | 12.45 | 9.50 |
| 15 | 1.150 | .410 | 1.200 | .490 | .375 |
| | 29.21 | 10.41 | 30.48 | 12.45 | 9.50 |
| 25 | 1.690 | .410 | 1.200 | .490 | .375 |
| | 42.93 | 10.41 | 30.48 | 12.45 | 9.50 |
| 37 | 2.340 | .610 | 1.650 | .490 | .575 |
| | 59.44 | 15.49 | 41.91 | 12.45 | 14.60 |
| 50 | 2.240 | .580 | 1.650 | .600 | .575 |
| | 56.90 | 14.73 | 41.91 | 15.24 | 14.60 |

MATERIAL: STEEL
 PLATING: TIN
 RoHS COMPLIANT

| | | | | |
|--|---|-----------------|-------------------------|------------------|
|  | THESE DRAWINGS AND SPECIFICATIONS ARE THE PROPERTY OF NorComp AND SHALL NOT BE REPRODUCED, COPIED OR USED AS THE BASIS FOR THE MANUFACTURE OF SALE OF APPARATUS WITHOUT WRITTEN PERMISSION. | | DRAWN: WAYNE ROBBINS | DATE: 9-15-05 |
| | NorComp | | | CHECKED: |
| SCALE: 1:1 | | | | SHEET 1 OF 1 |
| DWG NO. | | 986-XXX-020L121 | | |