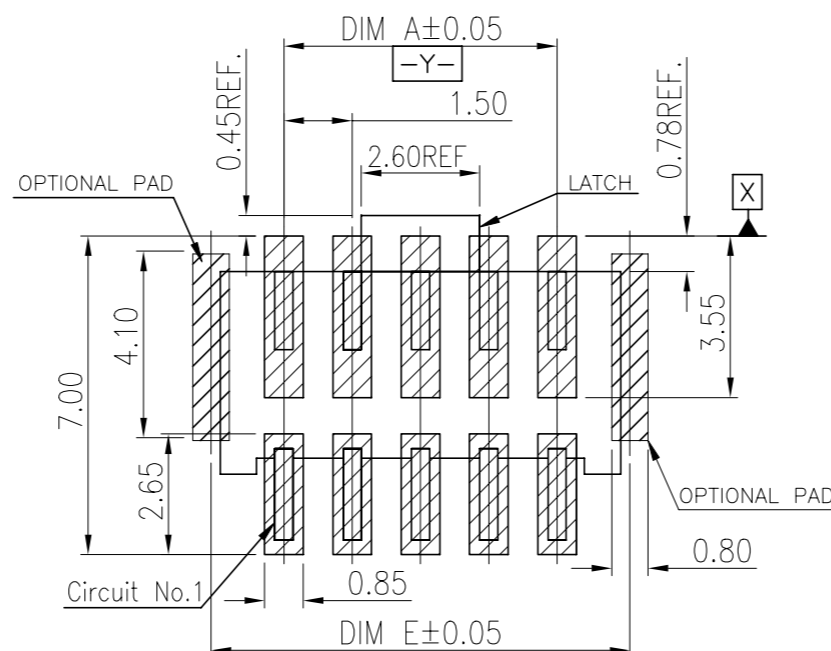
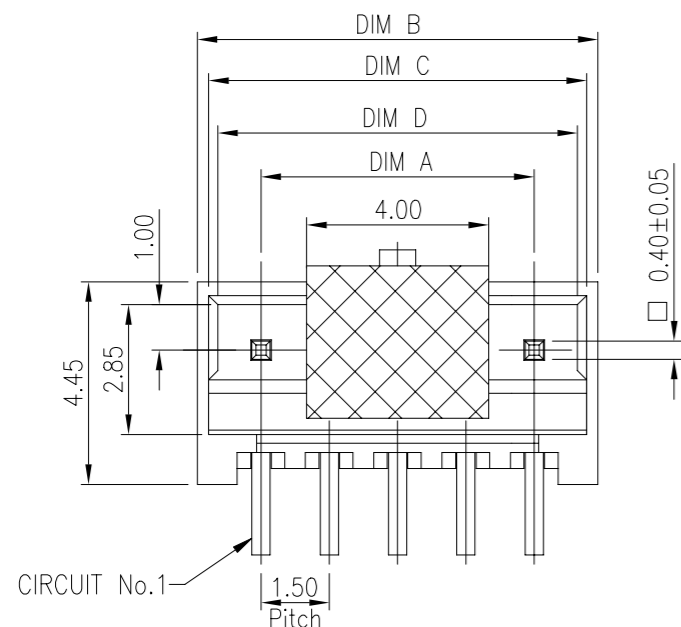


| P | LTR | DESCRIPTION   | DATE      | DWN | APVD |
|---|-----|---------------|-----------|-----|------|
| A |     | ECR-21-108912 | 08MAY2021 | T.Q | N.S  |

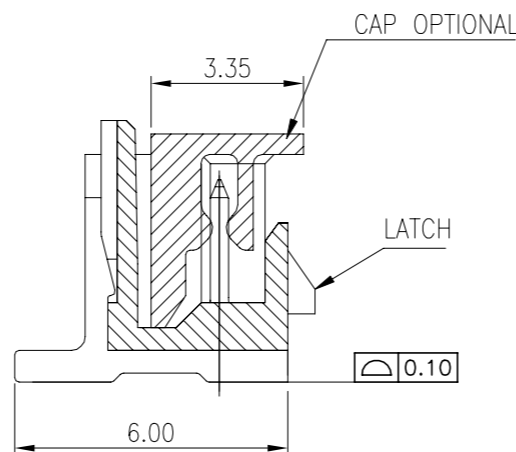
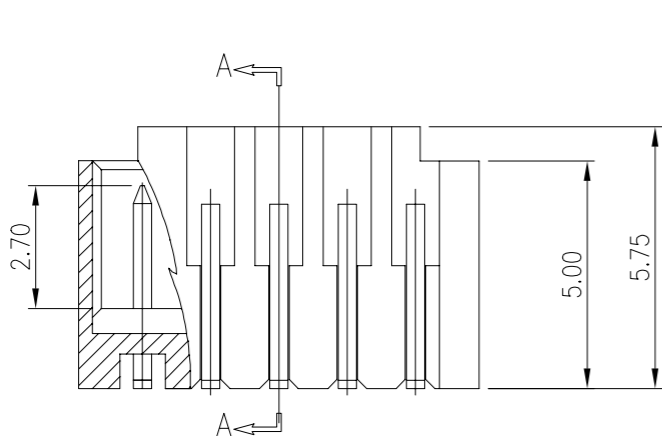


RECOMMENDED PCB LAYOUT FOR \*-2380320-\*

TOLERANCE ± 0.05

NOTES:

- MATERIAL:
  - HOUSING: HALOGEN FREE PLASTIC, UL94V-0.
  - CONTACT: COPPER ALLOY
- FINISH:
  - TYPE A: CONTACT: 50U" MIN. NICKEL UNDER PLATING OVERALL  
100U" MIN. MATTE TIN PLATING ON CONTACT AREA AND SOLDER AREA.
  - TYPE B: CONTACT: 50U" MIN. NICKEL UNDER PLATING OVERALL  
GOLD FLASH PLATING ON CONTACT AREA AND SOLDER AREA.
- REFLOW SOLDER CAPABLE TO 260°C, PER PRODUCTION SPEC.



SEC. A-A

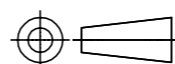
|       |         |       |       |       |       |       |               |             |
|-------|---------|-------|-------|-------|-------|-------|---------------|-------------|
| BLACK | 4.7     | 3.4   | 3.8   | 4.3   | 1.5   | 2     | 6-2380320-2   | 4-2380320-2 |
|       | 6.2     | 4.9   | 5.3   | 5.8   | 3.0   | 3     | 6-2380320-3   | 4-2380320-3 |
|       | 7.7     | 6.4   | 6.8   | 7.3   | 4.5   | 4     | 6-2380320-4   | 4-2380320-4 |
|       | 9.2     | 7.9   | 8.3   | 8.8   | 6.0   | 5     | 6-2380320-5   | 4-2380320-5 |
|       | 10.7    | 9.4   | 9.8   | 10.3  | 7.5   | 6     | 6-2380320-6   | 4-2380320-6 |
|       | 12.2    | 10.9  | 11.3  | 11.8  | 9.0   | 7     | 6-2380320-7   | 4-2380320-7 |
|       | 13.7    | 12.4  | 12.8  | 13.3  | 10.5  | 8     | 6-2380320-8   | 4-2380320-8 |
|       | 15.2    | 13.9  | 14.3  | 14.8  | 12.0  | 9     | 6-2380320-9   | 4-2380320-9 |
|       | 16.7    | 15.4  | 15.8  | 16.3  | 13.5  | 10    | 7-2380320-0   | 5-2380320-0 |
|       | 18.2    | 16.9  | 17.3  | 17.8  | 15.0  | 11    | 7-2380320-1   | 5-2380320-1 |
|       | 19.7    | 18.4  | 18.8  | 19.3  | 16.5  | 12    | 7-2380320-2   | 5-2380320-2 |
|       | 21.2    | 19.9  | 20.3  | 20.8  | 18.0  | 13    | 7-2380320-3   | 5-2380320-3 |
|       | 22.7    | 21.4  | 21.8  | 22.3  | 19.5  | 14    | 7-2380320-4   | 5-2380320-4 |
|       | 24.2    | 22.9  | 23.3  | 23.8  | 21.0  | 15    | 7-2380320-5   | 5-2380320-5 |
|       | NATURAL | 4.7   | 3.4   | 3.8   | 4.3   | 1.5   | 2             | 2-2380320-2 |
| 6.2   |         | 4.9   | 5.3   | 5.8   | 3.0   | 3     | 2-2380320-3   | 2380320-3   |
| 7.7   |         | 6.4   | 6.8   | 7.3   | 4.5   | 4     | 2-2380320-4   | 2380320-4   |
| 9.2   |         | 7.9   | 8.3   | 8.8   | 6.0   | 5     | 2-2380320-5   | 2380320-5   |
| 10.7  |         | 9.4   | 9.8   | 10.3  | 7.5   | 6     | 2-2380320-6   | 2380320-6   |
| 12.2  |         | 10.9  | 11.3  | 11.8  | 9.0   | 7     | 2-2380320-7   | 2380320-7   |
| 13.7  |         | 12.4  | 12.8  | 13.3  | 10.5  | 8     | 2-2380320-8   | 2380320-8   |
| 15.2  |         | 13.9  | 14.3  | 14.8  | 12.0  | 9     | 2-2380320-9   | 2380320-9   |
| 16.7  |         | 15.4  | 15.8  | 16.3  | 13.5  | 10    | 3-2380320-0   | 1-2380320-0 |
| 18.2  |         | 16.9  | 17.3  | 17.8  | 15.0  | 11    | 3-2380320-1   | 1-2380320-1 |
| 19.7  |         | 18.4  | 18.8  | 19.3  | 16.5  | 12    | 3-2380320-2   | 1-2380320-2 |
| 21.2  |         | 19.9  | 20.3  | 20.8  | 18.0  | 13    | 3-2380320-3   | 1-2380320-3 |
| 22.7  |         | 21.4  | 21.8  | 22.3  | 19.5  | 14    | 3-2380320-4   | 1-2380320-4 |
| 24.2  |         | 22.9  | 23.3  | 23.8  | 21.0  | 15    | 3-2380320-5   | 1-2380320-5 |
| COLOR |         | DIM.E | DIM.D | DIM.C | DIM.B | DIM.A | POS.NO.       | TYPE B      |
|       |         |       |       |       |       |       | PLATING SPEC. |             |
|       |         |       |       |       |       |       | P/N           |             |

THIS DRAWING IS A CONTROLLED DOCUMENT.

DWN Jone Ji 23SEP2020

DIMENSIONS:  
mm

TOLERANCES UNLESS OTHERWISE SPECIFIED:



|        |        |
|--------|--------|
| 0 PLC  | ± 0.5  |
| 1 PLC  | ± 0.35 |
| 2 PLC  | ± 0.25 |
| 3 PLC  | ± 0.15 |
| 4 PLC  | ±      |
| ANGLES | ± 2'   |

MATERIAL SEE NOTE

FINISH -

CHK Wenke He

APVD Wenke He

PRODUCT SPEC

APPLICATION SPEC

WEIGHT

CUSTOMER DRAWING

**STE** TE Connectivity Ltd.

1.5P WTB VERTICAL TYPE  
WITH LATCH

| SIZE | CAGE CODE | DRAWING NO | RESTRICTED TO |
|------|-----------|------------|---------------|
| A3   | 00779     | C=2380320  | -             |

SCALE N/A SHEET 1 of 5 REV A

4

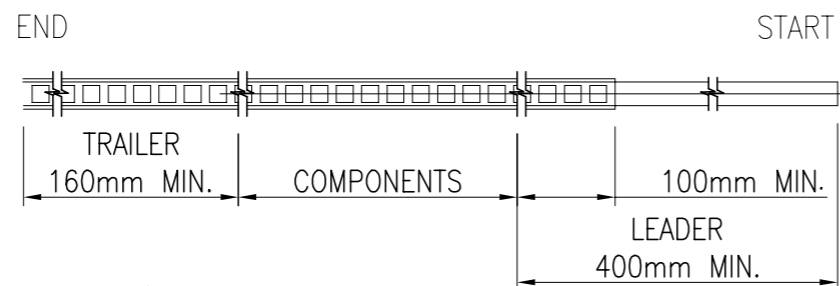
3

2

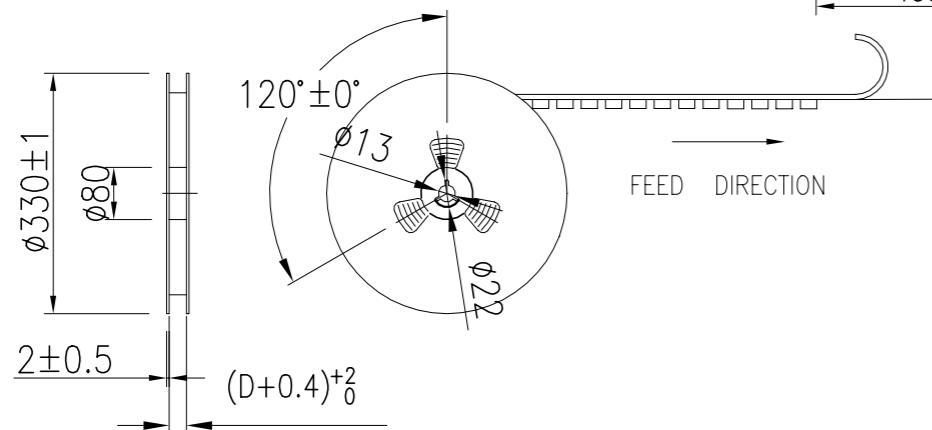
1

REVISIONS

| P | LTR | DESCRIPTION | DATE | DWN | APVD |
|---|-----|-------------|------|-----|------|
| - | -   | SEE SHEET 1 | -    | -   | -    |

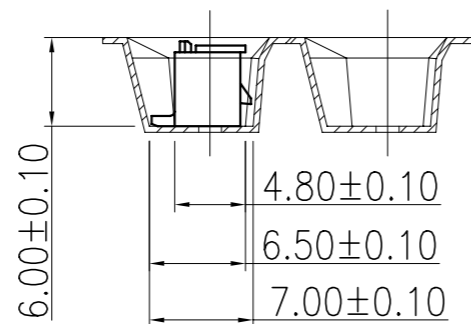
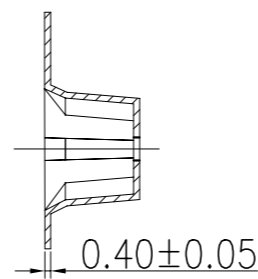
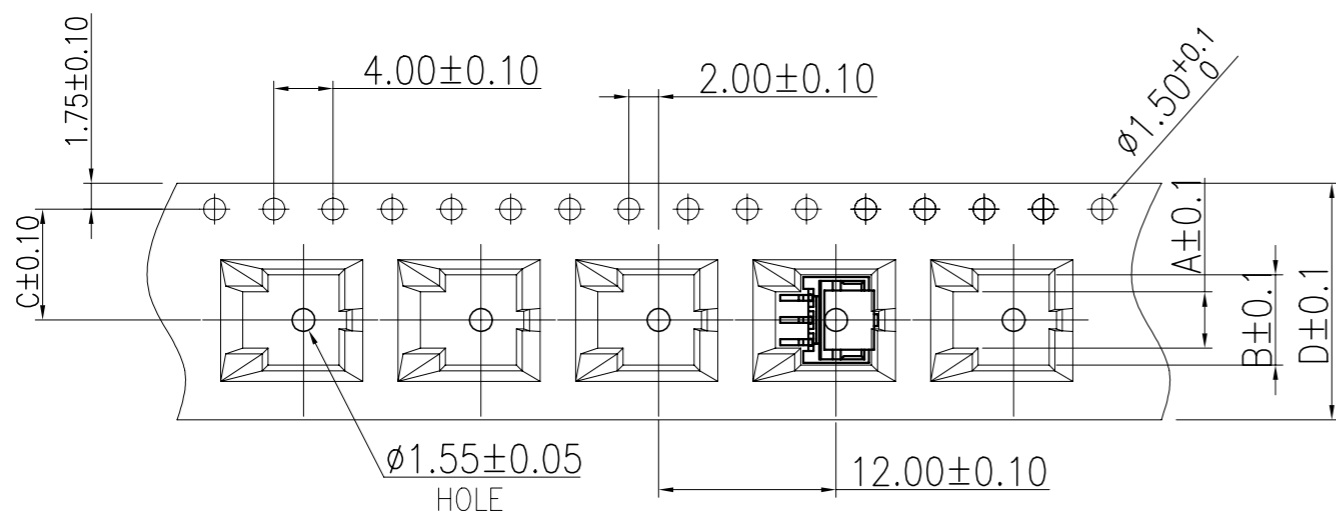


| POS. NO | DIM A | DIM B | DIM C | DIM D |
|---------|-------|-------|-------|-------|
| 2       | 2.30  | 4.60  |       |       |
| 3       | 3.80  | 6.10  | 7.50  | 16.00 |
| 4       | 5.30  | 7.60  |       |       |



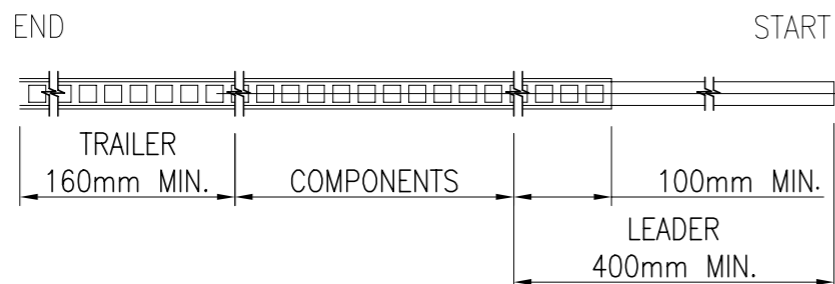
NOTES:

1. 10 SPROCKET HOLE PITCH CUMULATIVE TOLERANCE: ±0.20mm
2. CARRIER CAMBER NOT TO EXCEED 1mm IN 100mm.
3. ALL DIMENSIONS MEET EIA-481-C REQUIREMENTS.
4. MATERIAL: BLACK ANTI-STATIC POLYSTYRENE.
5. THICKNESS: 0.40±0.05 mm.
6. PACKING LENGTH PER 13" REEL : 12.4 METERS.
7. COMPONENT LOAD PER 13" REEL : 950 PCS.
8. PRODUCTS PLACEMENT MUST BE IN THE SAME DIRECTION.



|  |  |                  |          |           |                                   |               |
|--|--|------------------|----------|-----------|-----------------------------------|---------------|
| THIS DRAWING IS A CONTROLLED DOCUMENT. |  | DWN              | Jone Ji  | 23SEP2020 | <b>STE</b> TE Connectivity Ltd.   |               |
|  |  | CHK              | Wenke He | -         |                                   |               |
|  |  | APVD             | Wenke He | -         | NAME                              |               |
|  |  | PRODUCT SPEC     |          |           | 1.5P WTB VERTICAL TYPE WITH LATCH |               |
|  |  | APPLICATION SPEC |          |           | -                                 |               |
|  |  | SIZE             | A3       | CAGE CODE | 00779                             | DRAWING NO    |
|  |  | WEIGHT           | -        | C=2380320 |                                   | RESTRICTED TO |
|  |  | CUSTOMER DRAWING |          |           | SCALE                             | N/A           |
|  |  | SHEET            |          |           | 2 of 5                            | REV           |
|  |  |                  |          |           | A                                 |               |

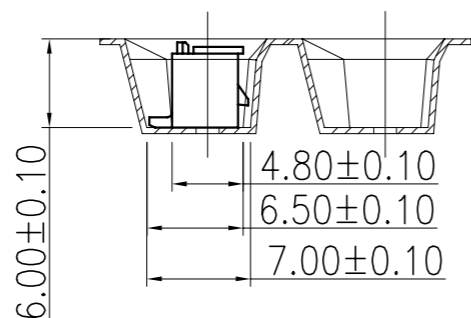
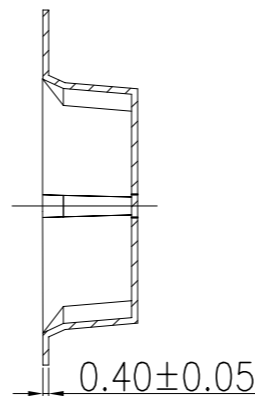
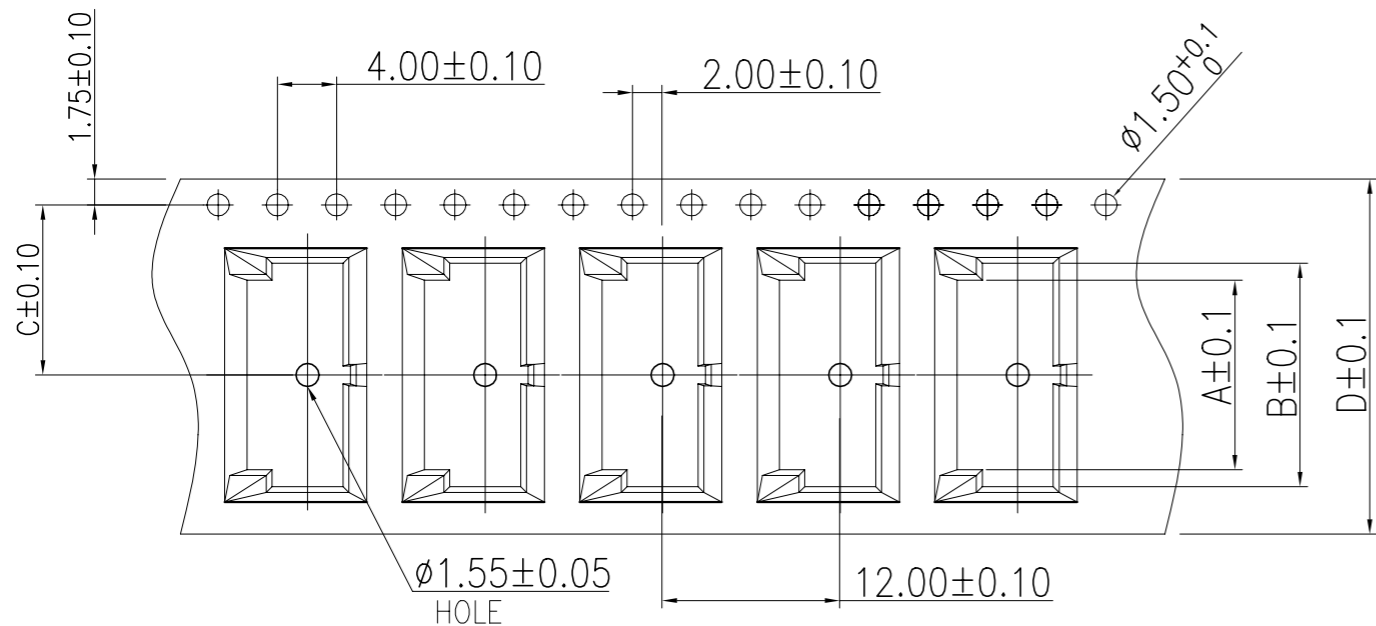
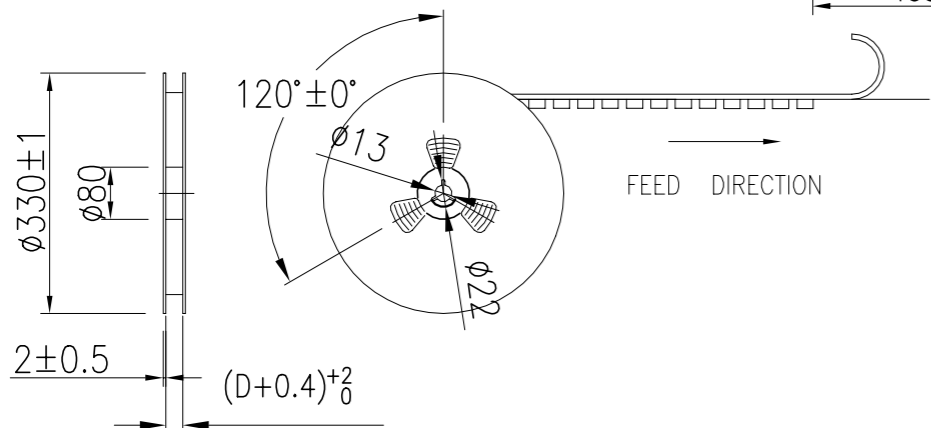
| P | LTR | DESCRIPTION | DATE | DWN | APVD |
|---|-----|-------------|------|-----|------|
| - | -   | SEE SHEET 1 | -    | -   | -    |



| POS. NO | DIM A | DIM B | DIM C | DIM D |
|---------|-------|-------|-------|-------|
| 5       | 6.80  | 9.10  | 11.5  | 24    |
| 6       | 8.30  | 10.60 |       |       |
| 7       | 9.80  | 12.10 |       |       |
| 8       | 11.30 | 13.60 |       |       |
| 9       | 12.80 | 15.10 |       |       |

NOTES:

- 10 SPROCKET HOLE PITCH CUMULATIVE TOLERANCE: ±0.20mm
- CARRIER CAMBER NOT TO EXCEED 1mm IN 100mm.
- ALL DIMENSIONS MEET EIA-481-C REQUIREMENTS.
- MATERIAL: BLACK ANTI-STATIC POLYSTYRENE.
- THICKNESS: 0.40±0.05 mm.
- PACKING LENGTH PER 13" REEL : 12.4 METERS.
- COMPONENT LOAD PER 13" REEL : 950 PCS.
- PRODUCTS PLACEMENT MUST BE IN THE SAME DIRECTION.



THIS DRAWING IS A CONTROLLED DOCUMENT.

DWN Jone Ji 23SEP2020

CHK Wenke He

APVD Wenke He

PRODUCT SPEC

APPLICATION SPEC

WEIGHT

CUSTOMER DRAWING

**STE** TE Connectivity Ltd.

1.5P WTB VERTICAL TYPE WITH LATCH

|      |           |            |               |
|------|-----------|------------|---------------|
| SIZE | CAGE CODE | DRAWING NO | RESTRICTED TO |
| A3   | 00779     | C=2380320  | -             |

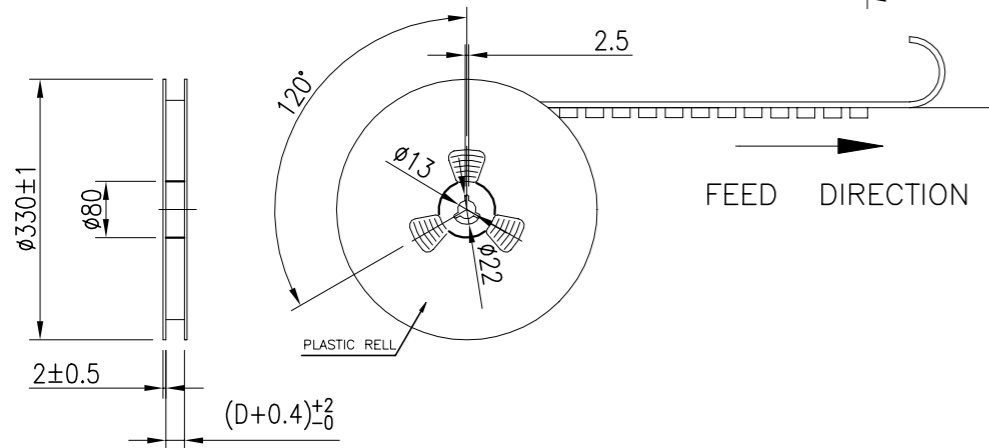
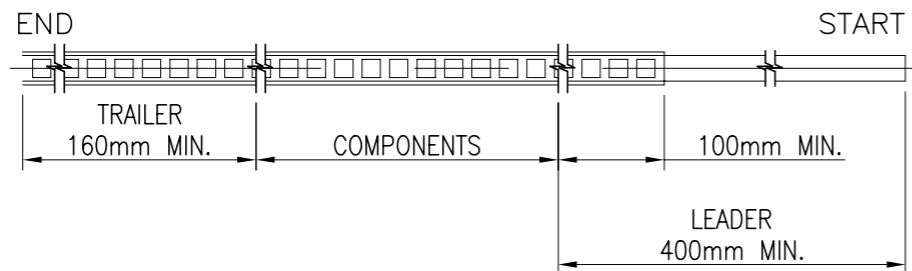
|       |        |     |
|-------|--------|-----|
| SCALE | SHEET  | REV |
| N/A   | 3 of 5 | A   |

| DIMENSIONS: | TOLERANCES UNLESS OTHERWISE SPECIFIED: |
|-------------|--|
| mm          |  |
|             | 0 PLC ± 0.5                            |
|             | 1 PLC ± 0.35                           |
|             | 2 PLC ± 0.25                           |
|             | 3 PLC ± 0.15                           |
|             | 4 PLC ± -                              |
|             | ANGLES ± 2'                            |

MATERIAL SEE NOTE

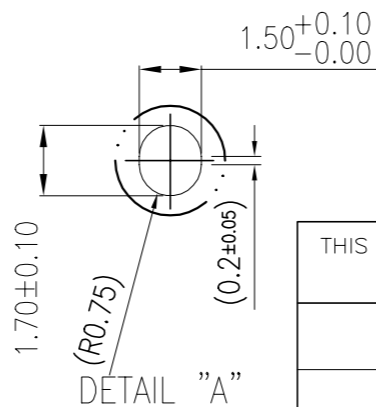
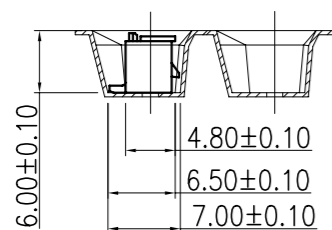
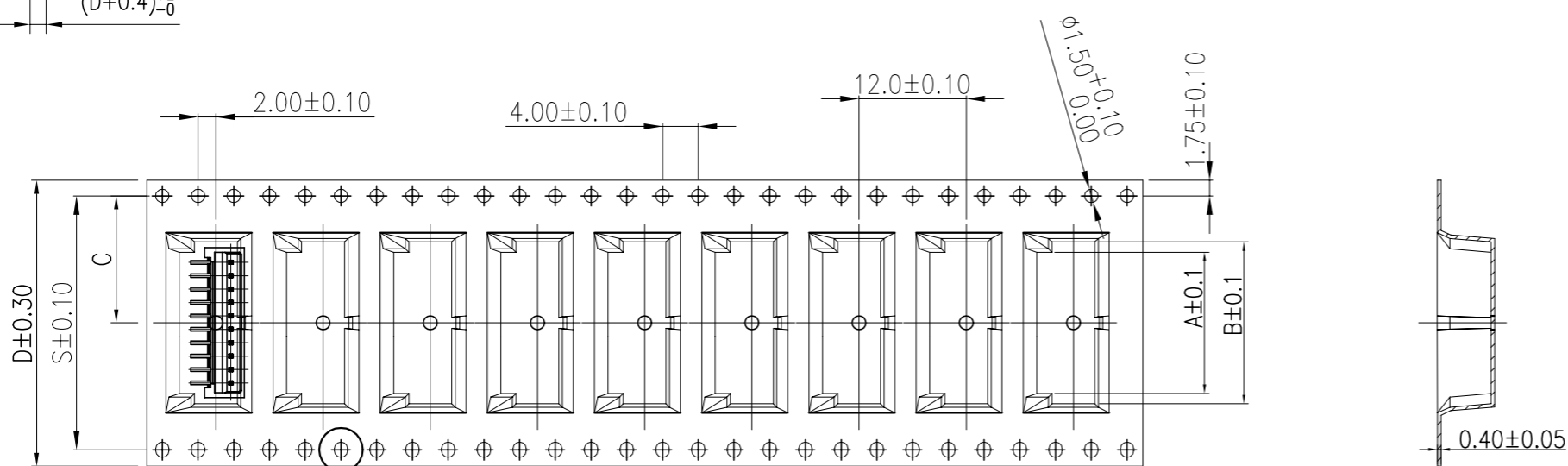
FINISH -

| P | LTR | DESCRIPTION | DATE | DWN | APVD |
|---|-----|-------------|------|-----|------|
| - | -   | SEE SHEET 1 | -    | -   | -    |



| POS. NO | DIM A | DIM B | DIM C | DIM D | DIM S |
|---------|-------|-------|-------|-------|-------|
| 10      | 14.3  | 16.6  | 14.2  | 32    | 28.4  |
| 11      | 15.8  | 18.1  |       |       |       |
| 12      | 17.3  | 19.6  |       |       |       |
| 13      | 18.8  | 21.1  | 20.2  | 44    | 40.4  |
| 14      | 20.3  | 22.6  |       |       |       |
| 15      | 21.8  | 24.1  |       |       |       |
| 16      | 23.3  | 25.6  |       |       |       |
| 17      | 24.8  | 27.1  |       |       |       |
| 18      | 26.3  | 28.6  |       |       |       |
| 19      | 27.8  | 30.1  |       |       |       |
| 20      | 29.3  | 31.6  |       |       |       |

- NOTES:
- 10 SPROCKET HOLE PITCH CUMULATIVE TOLERANCE:  $\pm 0.20\text{mm}$
  - CARRIER CAMBER NOT TO EXCEED 1mm IN 100mm.
  - ALL DIMENSIONS MEET EIA-481-C REQUIREMENTS.
  - MATERIAL: BLACK ANTI-STATIC POLYSTYRENE.
  - THICKNESS:  $0.40 \pm 0.05\text{ mm}$ .
  - PACKING LENGTH PER 13" REEL : 12.4 METERS.
  - COMPONENT LOAD PER 13" REEL : 950 PCS.
  - PRODUCTS PLACEMENT MUST BE IN THE SAME DIRECTION.

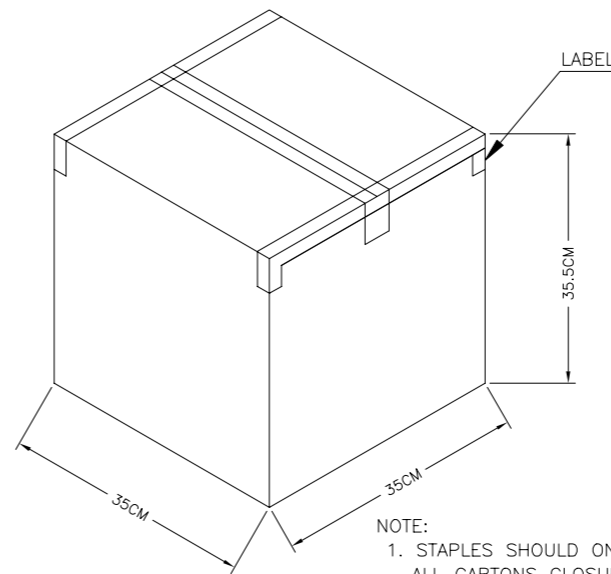
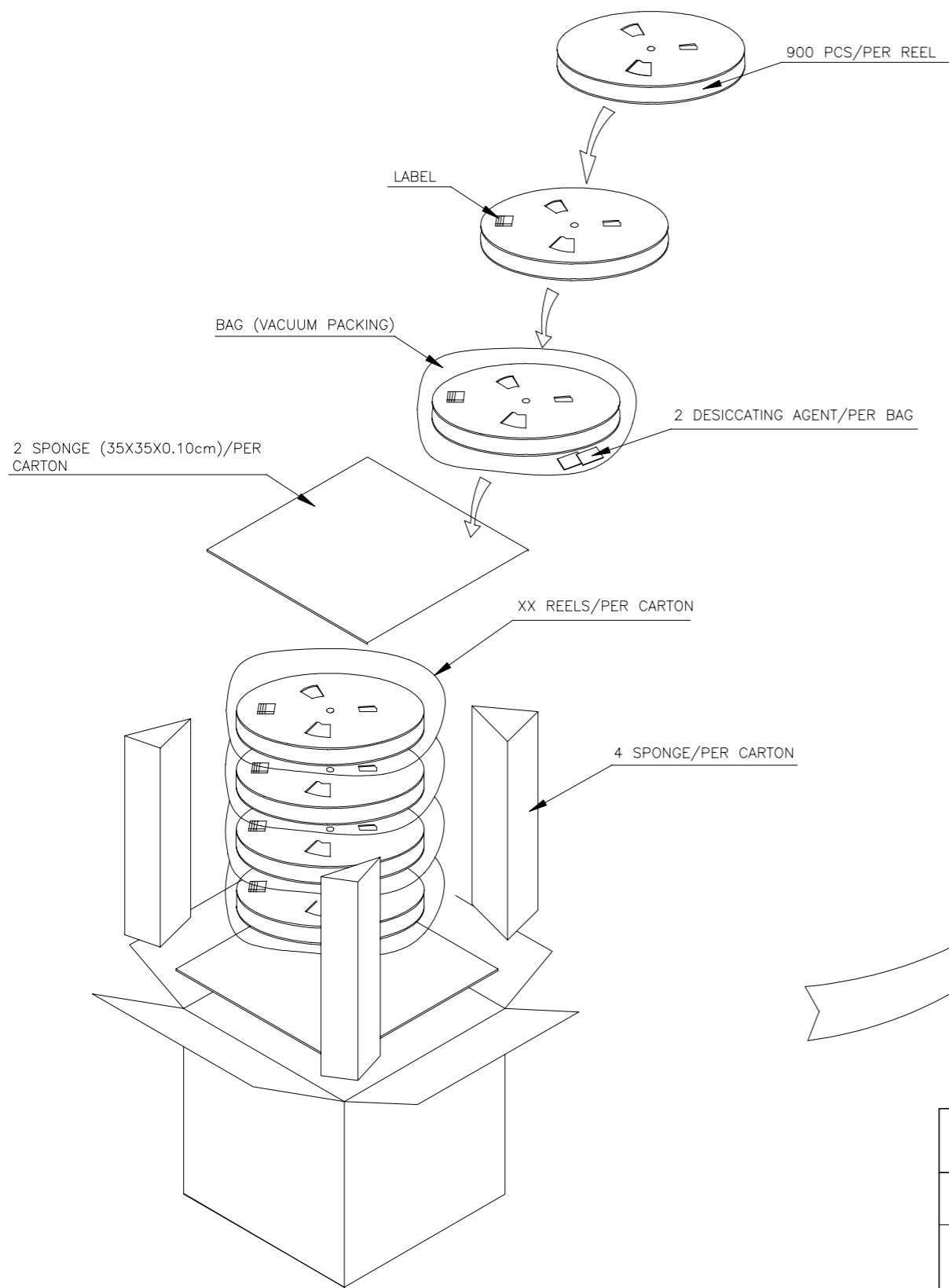


|   |  |                       |   |                 |
|---|--|-----------------------|---|-----------------|
| THIS DRAWING IS A CONTROLLED DOCUMENT.  |  | DWN Jone Ji 23SEP2020 | TE Connectivity Ltd.                      |                 |
| DIMENSIONS: mm  |  | CHK Wenke He          |   |                 |
| TOLERANCES UNLESS OTHERWISE SPECIFIED:  |  | APVD Wenke He         | NAME<br>1.5P WTB VERTICAL TYPE WITH LATCH |                 |
| 0 PLC $\pm 0.5$<br>1 PLC $\pm 0.35$<br>2 PLC $\pm 0.25$<br>3 PLC $\pm 0.15$<br>4 PLC $\pm$<br>ANGLES $\pm 2'$ |  | PRODUCT SPEC          |   |                 |
| MATERIAL SEE NOTE   |  | FINISH -              | APPLICATION SPEC<br>-                     |                 |
|   |  | WEIGHT                | SIZE A3                                   | CAGE CODE 00779 |
|   |  | CUSTOMER DRAWING      | DRAWING NO C=2380320                      | RESTRICTED TO - |
|   |  | SCALE N/A             | SHEET 4 of 5                              | REV A           |

REVISIONS

| P | LTR | DESCRIPTION | DATE | DWN | APVD |
|---|-----|-------------|------|-----|------|
| - | -   | SEE SHEET 1 | -    | -   | -    |

| POS.NO. | PARTS PER PRIMARY CARTON | PARTS PER REEL | TOTAL REELS PER PRIMARY CARTON |
|---------|--------------------------|----------------|--------------------------------|
| 2       | 15200(PCS)               | 950(PCS)       | 16                             |
| 3       | 15200(PCS)               | 950(PCS)       | 16                             |
| 4       | 15200(PCS)               | 950(PCS)       | 16                             |
| 5       | 10450(PCS)               | 950(PCS)       | 11                             |
| 6       | 10450(PCS)               | 950(PCS)       | 11                             |
| 7       | 10450(PCS)               | 950(PCS)       | 11                             |
| 8       | 10450(PCS)               | 950(PCS)       | 11                             |
| 9       | 10450(PCS)               | 950(PCS)       | 11                             |
| 10      | 8550(PCS)                | 950(PCS)       | 9                              |
| 11      | 8550(PCS)                | 950(PCS)       | 9                              |
| 12      | 8550(PCS)                | 950(PCS)       | 9                              |
| 13      | 6650(PCS)                | 950(PCS)       | 7                              |
| 14      | 6650(PCS)                | 950(PCS)       | 7                              |
| 15      | 6650(PCS)                | 950(PCS)       | 7                              |



NOTE:  
 1. STAPLES SHOULD ONLY BE USED TO SET UP CARTON  
 ALL CARTONS CLOSURES MUST BE DONE WITH TAPE.  
 2. FILL PACKAGING REEL WITH THE QUANTITIES AS INDICATED  
 IN THE CHART.

|  |  |                             |                                      |           |
|--|--|-----------------------------|--------------------------------------|-----------|
| THIS DRAWING IS A CONTROLLED DOCUMENT. |  | DWN<br>Jone Ji<br>23SEP2020 | TE Connectivity Ltd.                 |           |
| DIMENSIONS:<br>mm                      |  | CHK<br>Wenke He             |                                      |           |
|  |  | APVD<br>Wenke He            | NAME                                 |           |
| TOLERANCES UNLESS OTHERWISE SPECIFIED: |  | PRODUCT SPEC                | 1.5P WTB VERTICAL TYPE<br>WITH LATCH |           |
| 0 PLC ± 0.5                            |  | APPLICATION SPEC            | -                                    |           |
| 1 PLC ± 0.35                           |  | WEIGHT                      | SIZE                                 | CAGE CODE |
| 2 PLC ± 0.25                           |  | SEE NOTE                    | A3                                   | 00779     |
| 3 PLC ± 0.15                           |  |                             | DRAWING NO                           | C=2380320 |
| 4 PLC ± -                              |  | CUSTOMER DRAWING            |                                      | -         |
| ANGLES ± 2'                            |  | SCALE                       | N/A                                  | SHEET     |
| MATERIAL                               |  | 5 of 5                      |                                      | REV       |
| FINISH                                 |  | A                           |                                      |           |