

8 7 6 5 4 3 2 1

F

E

D

C

B

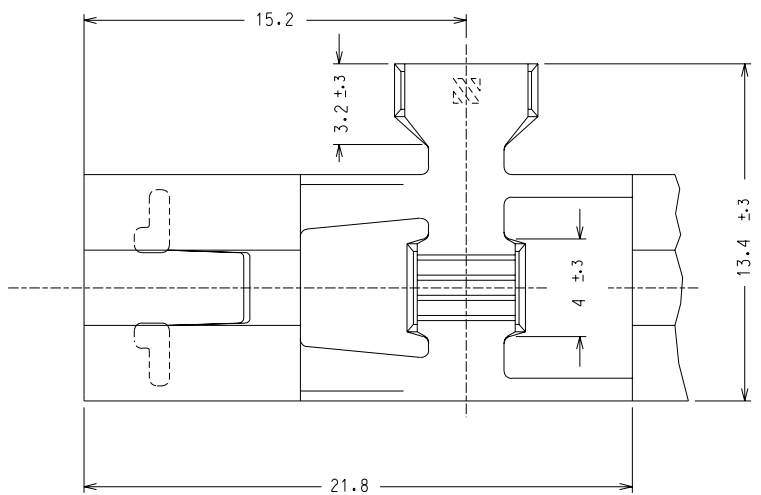
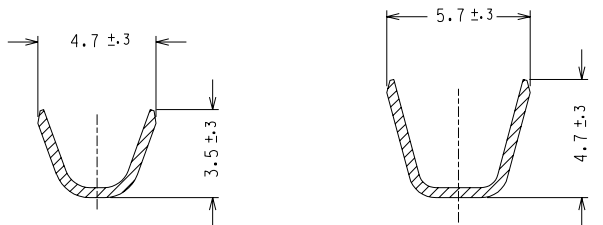
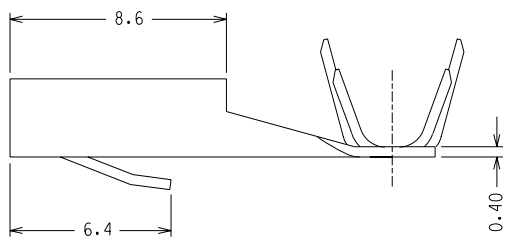
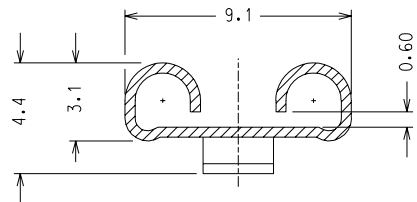
A

F

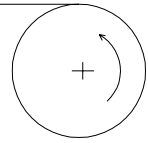
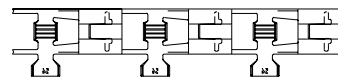
E

D

C



SENSO DI AVANZAMENTO PER MINI APPLICATORE  
DIRECTION OFF TOP OF REEL



CODICE P/N	MATERIALE MATERIAL	FINITURA PLATING
94030-5900	OTTONE BRASS	GREGGIO/ PLAIN
94030-5901		STAGNATO/ TIN
94030-5902	BRONZO FOSF. PHOSPH. BRONZE	GREGGIO/ PLAIN

EC N: Z2004-0224 GZUIN 2004/04/28 A I LTR REVISIONS	DIMENSIONS SHOWN (METRIC) INCH UNLESS OTHERWISE SPECIFIED TOLERANCES: ANGULAR ± 2° INCH (METRIC)	DRWG BY Gottardo	REVISE ONLY ON CAD SYSTEM		SH.	REV.
	3 PLACE ± 2 PLACE ± ± 0.1 1 PLACE ± ± 0.2	CHK'D BY	CAD/CAM FILENAME CAD FILE 030590XS	THIS DRAWING CONTAINS INFORMATION THAT IS PROPRIETARY TO MOLEX INC AND SHOULD NOT BE USED WITHOUT WRITTEN PERMISSION		
	DESIGN DIMENSION (PRIMARY) <input type="checkbox"/> (MM) <input type="checkbox"/> IN EQUIVALENT DIMENSION (SECONDARY) <input type="checkbox"/> (MM) <input type="checkbox"/> IN.	APP'D BY Previato	TITLE TERMINALE FEMMINA A BANDIERA DA 7.7 x 0.8 QIK KONNECT FLAG 7.7 x 0.8 SEZ. RAME/ WIRE RANGE: 0.8-2.5 mm <sup>2</sup> — ISOLANTE/INS. RANGE: Ø 3.0-4.3 mm			
	SCALE 5 : 1	PART NO. VEDI TABELLA SEE CHART	MOLEX INCORPORATED	SHEET NO. DATE 1 / 1 02-02-90	DWG NO. SD-94030-590	SIZE B

8 7