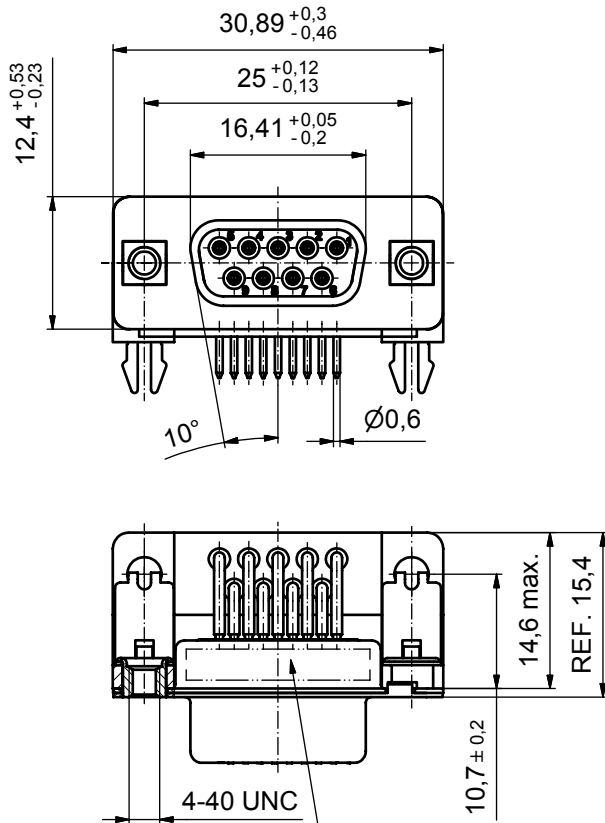
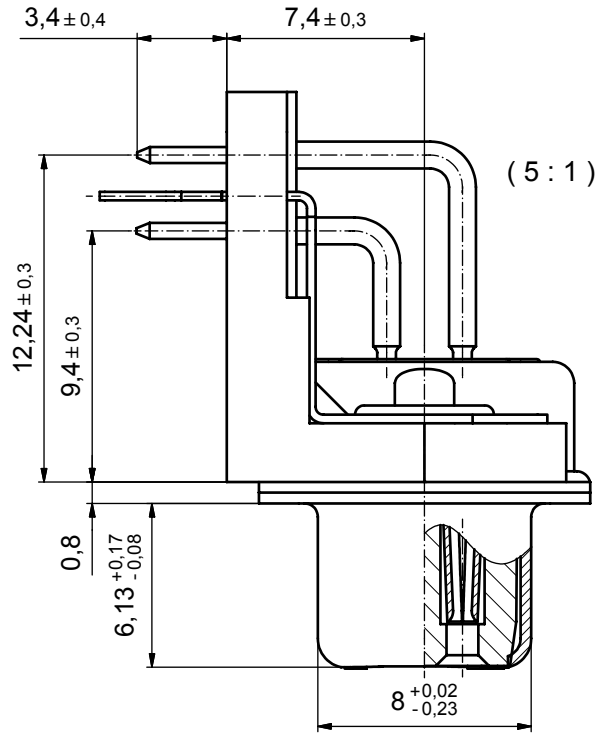
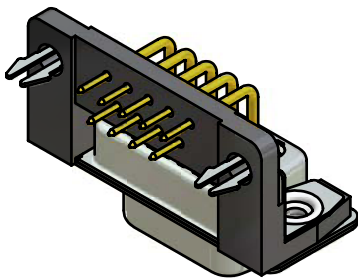


P.C.B. HOLE DRILLINGS



SEE NOTE 12



Directive 2002/95 EC
„RoHS“
Compliant

NOTES:

1. RoHS COMPLIANT
2. SUITABLE FOR WAVESOLDERING
3. METALSHELLS: STEEL; min. 315µin TIN over 40-80µin NICKEL
4. INSULATORS: HIGH TEMPERATURE PLASTIC UL 94 V-0, BLACK
5. CONTACTS: COPPER ALLOY
PLATING: 8µin HARD GOLD over min. 50µin NICKEL
CONTACT TAILS PRETINNED
6. MOUNTING BRACKET: PBT GF UL 94 V-0; BLACK
7. THREADED INSERT: COPPER ALLOY; min. 200µin TIN over 80µin NICKEL
8. GROUNDING-CLIP: COPPER ALLOY
PCB-HOLE: $\varnothing 3,1 \pm 0,1$; PCB THICKNESS 1,6mm
9. CAPACITANCE: 830pF ± 20%
10. DIELECTRIC WITHSTANDING VOLTAGE: 424 VDC
11. MAXIMUM TORQUE VALUE FOR THREAD: 6 in.LB
12. CONNECTOR IS PART MARKED: 242A12900X CONEC ABC

APPROVAL # FREIGABE # DEBLOCAGE # AUTORIZACION # APPROVAL	
CUSTOMER APPROVAL DATE:	
NAME:	TITLE:
COMPANY NAME:	
APPROVAL # FREIGABE # DEBLOCAGE # AUTORIZACION # APPROVAL	

THIS DRAWING MAY NOT BE COPIED OR REPRODUCED IN ANY WAY, AND MAY NOT BE PASSED ON TO A THIRD PARTY WITHOUT WRITTEN PERMISSION. OWNERSHIP AND COPYRIGHT OF CONEC GmbH			
DO NOT ALTER CAD DRAWING BY HAND			
rev.	description	date	name

tolerance	dim. in mm
date	name
drawn	23.01.07 Lehmenkühler
appd.	23.01.07 Mickenbecker
norm	DIN 41652
d-old	
CONEC	

scale:	2:1 (5:1)	
material:	SEE NOTES	
title:	D-SUB FILTER FEMALE 90° 9pos. SOLDER PIN ANGLED 0.370inch threaded insert, mounting bracket, grounding clip	
dwg no:	Inventor 10	DIN-A3
	24K2A914	sh: 1
part no:	242A12900X	