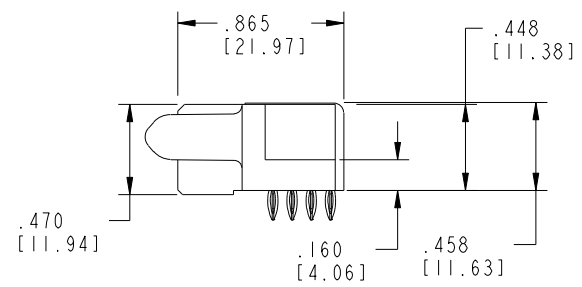
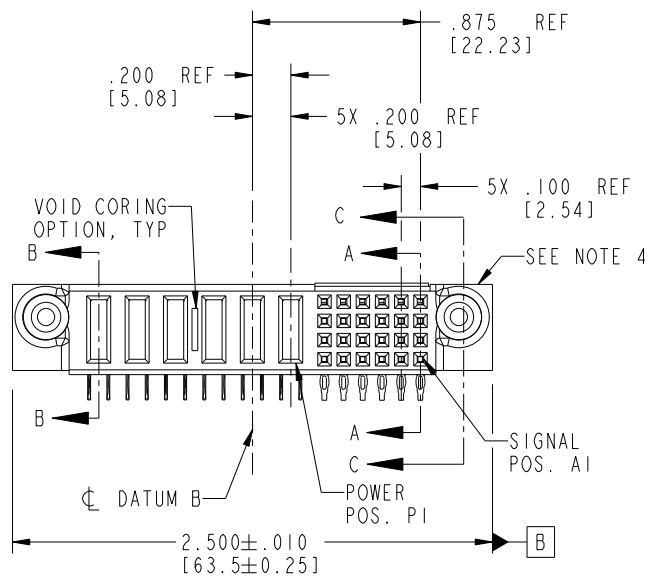
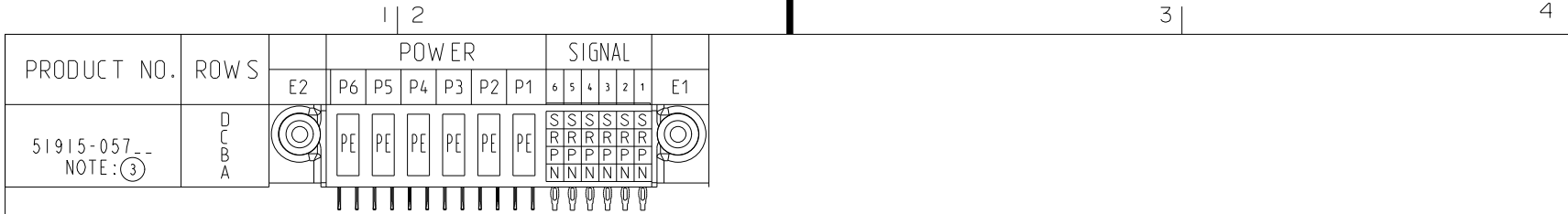


Tous droits strictement réservés. Reproduction ou communication a des tiers interdite sous quelque forme que ce soit sans autorisation écrite du propriétaire. Propriété de c FCI. Droits de reproduction FCI.

All rights strictly reserved. Reproduction or issue to third parties in any form whatever is not permitted without written authority from the proprietor. Property of FCI. Copyright FCI.



CODE	DIM "M" MATING LENGTH	CONTACT TYPE
N	N/A [N/A]	SIGNAL
P	N/A [N/A]	SIGNAL
R	N/A [N/A]	SIGNAL
S	N/A [N/A]	SIGNAL
PE	.042 [1.07]	POWER

mat'l code				SEE NOTE 2				tolerances unless otherwise specified				CUSTOMER		FCI	
ltr	ecn no.	dr	date	linear	.XX±.01/0.X±0.3			COPY		www.fciconnect.com		title		24S + 6P	
A	V04-0845	TAB	08/17/04		.XXX±.005/0.XX±0.13			projection		R/A PRESS-FIT RECEPTACLE		product family		PwrBlade	
B	V04-1040	TAB	10/22/04	angles	.XXX±.002/0.XXX±0.051			INCH/MM		scale		size		dwg no	
C	V04-1118	TAB	11/16/04		0°±2°			1:1		A		51915-057		213	
D	DG04-0093	LH	12/13/04	dr	T. BRUNGARD	08/17/04								sheet	
E	DG05-0272	SJ	08/09/05	enrg	M. GRAY	08/17/04								1 of 4	
F	DG05-0285	SJ	08/18/05	chr	M. GRAY	08/17/04									
G	DG06-0423	JULIA	10/16/06	appd	M. GRAY	08/17/04									
sheet index	revision	G	G	G	G	G	G								
	sheet	1	2	3	4										

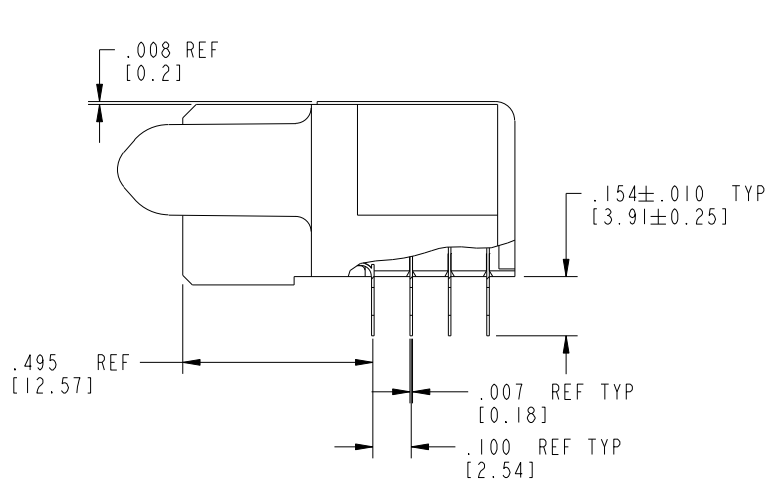
Tous droits strictement réservés. Reproduction ou communication a des tiers interdite sous quelque forme que ce soit sans autorisation écrite du propriétaire. Propriété de c FCI. Droits de reproduction FCI.

All rights strictly reserved. Reproduction or issue to third parties in any form whatever is not permitted without written authority from the proprietor. Property of FCI. Copyright FCI.

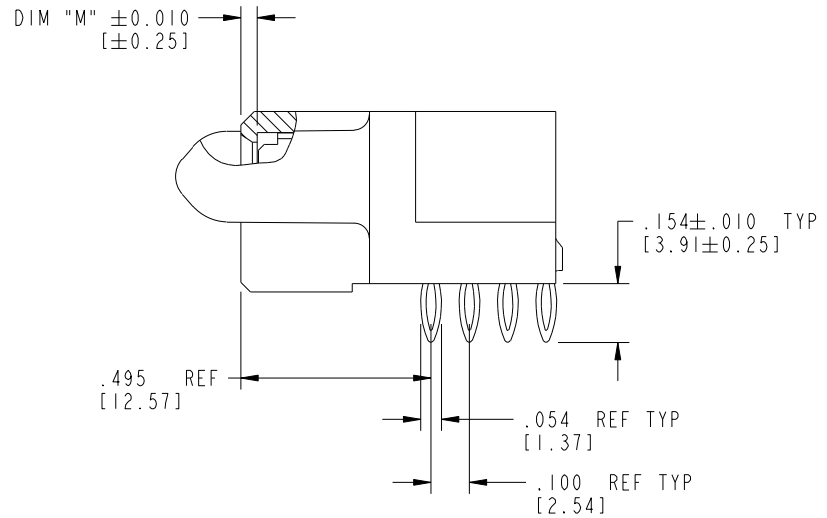


PRODUCT NUMBER

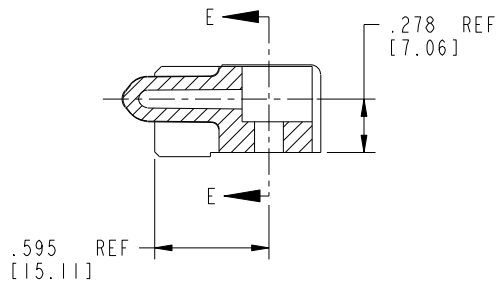
51915-057--  
NOTE: ③



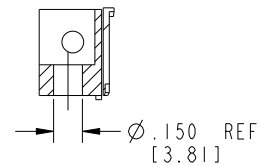
BROKEN-OUT SECTION A-A  
SCALE 2:1



BROKEN-OUT SECTION B-B  
SCALE 2:1



SECTION C-C



PARTIAL SECTION E-E

mat'l code		SEE NOTE 2		tolerances unless otherwise specified		CUSTOMER		FCI	
lfr	ecn no.	dr	date	linear	.XX±.01/0.X±0.3	COPY		www.fciconnect.com	
G				projection	.XXY±.005/0.XX±0.13	INCH/MM		title 24S + 6P	
				angles	.XXX±.0020/0.XXX±0.051	1:1		R/A PRESS-FIT RECEPTACLE	
				dr	T. BRUNGARD 08/17/04	scale		product family PwrBlade	
				enrg	M. GRAY 08/17/04	1:1		code 213	
				chr	M. GRAY 08/17/04			size dwg no	
				appd	M. GRAY 08/17/04			A 51915-057	
sheet index		revision sheet						sheet 2 of 4	

cage code 22556

Pro/E

PDM: Rev:G

STATUS: Released

Printed: Dec 20, 2010

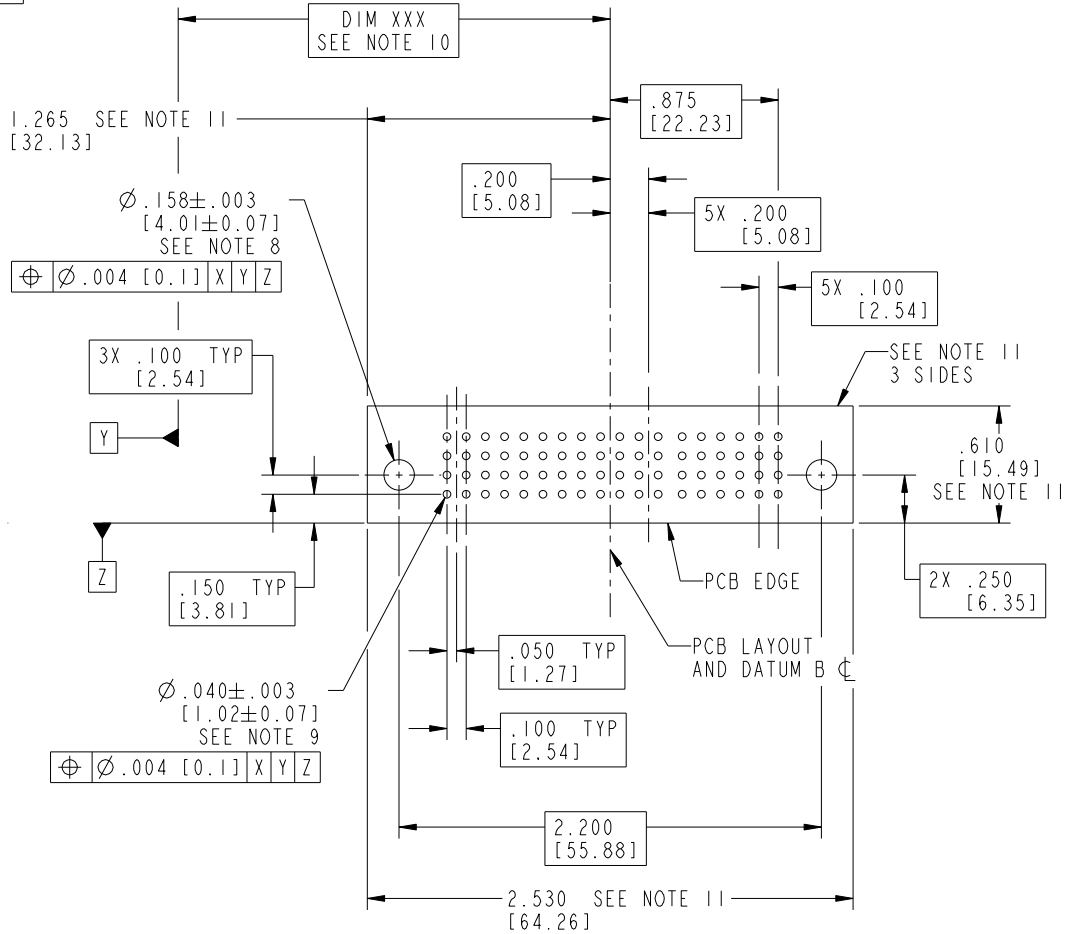
Tous droits strictement réservés. Reproduction ou communication a des tiers interdite sous quelque forme que ce soit sans autorisation écrite du propriétaire. Propriété de c FCI. Droits de reproduction FCI.

All rights strictly reserved. Reproduction or issue to third parties in any form whatever is not permitted without written authority from the proprietor. Property of FCI. Copyright FCI.



PRODUCT NUMBER

51915-057--  
NOTE: ③



mat'l code		SEE NOTE 2		tolerances unless otherwise specified		CUSTOMER		FCI	
ltr	ecn no.	dr	date	linear	.XX±.01/0.X±0.3	COPY		www.fciconnect.com	
G				projection	.XXX±.005/0.XX±0.13	projection		title 24S + 6P	
				angles	.XXX±.0020/0.XXX±0.051	INCH/MM		R/A PRESS-FIT RECEPTACLE	
				dr	0°±2°	scale		product family PwrBlade code	
				enr	T. BRUNGARD 08/17/04	1:1		size dwg no 213	
				chr	M. GRAY 08/17/04			sheet	
				appd	M. GRAY 08/17/04			A 51915-057 3 of 4	
sheet index	revision sheet								



A

A

B

B

1 | 2

3

4

1 | 2

Pro/E

PDM: Rev:G

STAT: Released

Printed: Dec 20, 2010

PRODUCT NUMBER

51915-057--  
NOTE: ③

NOTES:

1. DIMENSIONS AND TOLERANCES ARE IN ACCORDANCE WITH ASME Y14.5M, 1994 UNLESS OTHERWISE SPECIFIED.

CONNECTOR NOTES:

- ② HOUSING MATERIAL: UL 94 V-0 GLASS FILLED  
HIGH-TEMP THERMOPLASTIC  
POWER CONTACT MATERIAL: COPPER ALLOY  
SIGNAL PIN MATERIAL: COPPER ALLOY
- 3. PLATING:  
51915-057; 51915-057LF; 51915-057GLF PLATING SPEC. SEE PRINT: 10064183
- ④ MANUFACTURER'S NAME, P/N, AND DATE CODE TO APPEAR ON THIS SURFACE.
- 5. PRODUCT SPECIFICATION GS-12-149.  
APPLICATION SPECIFICATION BUS-20-067.
- 6. PACKAGED IN TRAYS.

PCB NOTES:

- 7. ALL HOLE DIAMETERS ARE FINISHED HOLE SIZE.
- ⑧ MOUNTING HOLES, WHERE APPLICABLE, ARE UNPLATED.
- ⑨  $\varnothing .0453 \pm .0010$  [1.151  $\pm$  0.025] DRILLED HOLES PLATED WITH .0003 [0.008] MIN SnPb OR Sn OVER .001 [0.03] TO .003 [0.08] Cu PLATING TO ACHIEVE  $\varnothing .040 \pm .003$  [1.02  $\pm$  .07] HOLE.
- ⑩ "DIM XXX" TO BE DETERMINED BY THE CUSTOMER.
- ⑪ CONNECTOR KEEP-OUT ZONE.
- 12. USE FCI CAM TOOL 430140-023 TO APPLY CONNECTOR TO PCB.

mat'l code		SEE NOTE 2		tolerances unless otherwise specified		CUSTOMER		FCI		www.fciconnect.com	
ltr	ecn no.	dr	date	linear	.XX±.01/0.X±0.3	COPY		title		24S + 6P	
G					.XXX±.005/0.XX±0.13	projection		R/A PRESS-FIT RECEPTACLE			
				angles	.XXX±.0020/0.XXX±0.051	INCH/MM		product family		PwrBlade	
				dr	0° ± 2°	scale		size		213	
				enr	T. BRUNGARD 08/17/04	1:1		dwg no		sheet	
				chr	M. GRAY 08/17/04			A		4 of 4	
				appd	M. GRAY 08/17/04			51915-057			
sheet index	revision sheet										

Tous droits strictement réservés. Reproduction ou communication a des tiers interdite sous quelque forme que ce soit sans autorisation écrite du propriétaire. Propriété de c FCI. Droits de reproduction FCI.



All rights strictly reserved. Reproduction or issue to third parties in any form whatever is not permitted without written authority from the proprietor. Property of FCI. Copyright FCI.