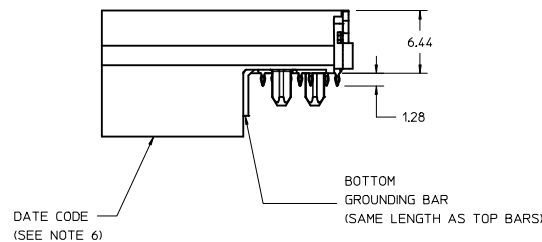
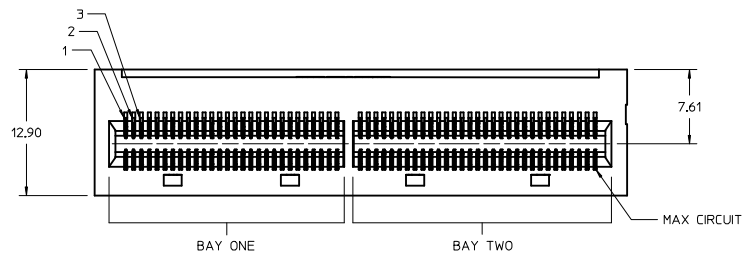


118 CKT
DOUBLE BAY EXAMPLE



170082-***

NUMBER OF CIRCUITS
PLATING:
1 = 0.76 MICROMETERS (30 MICRONCHES) GOLD
9 = 0.38 MICROMETERS (15 MICRONCHES) GOLD

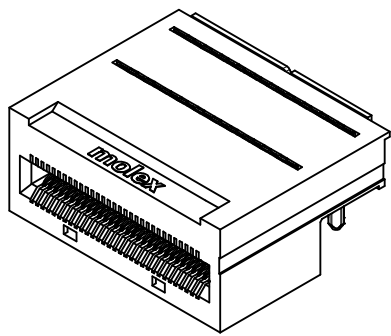
- 1 = 3 GROUND CLIPS / GROUND WAFERS NOT SINGULATED
- 2 = 3 GROUND CLIPS / GROUND WAFERS SINGULATED
- 3 = 2 CLIPS ON TOP / GROUND WAFERS NOT SINGULATED
- 5 = 2 CLIPS ON TOP / GROUND WAFERS SINGULATED
- 6 = NO GROUND CLIPS / GROUND WAFERS NOT SINGULATED
- 7 = NO GROUND CLIPS / GROUND WAFERS SINGULATED

NOTES:

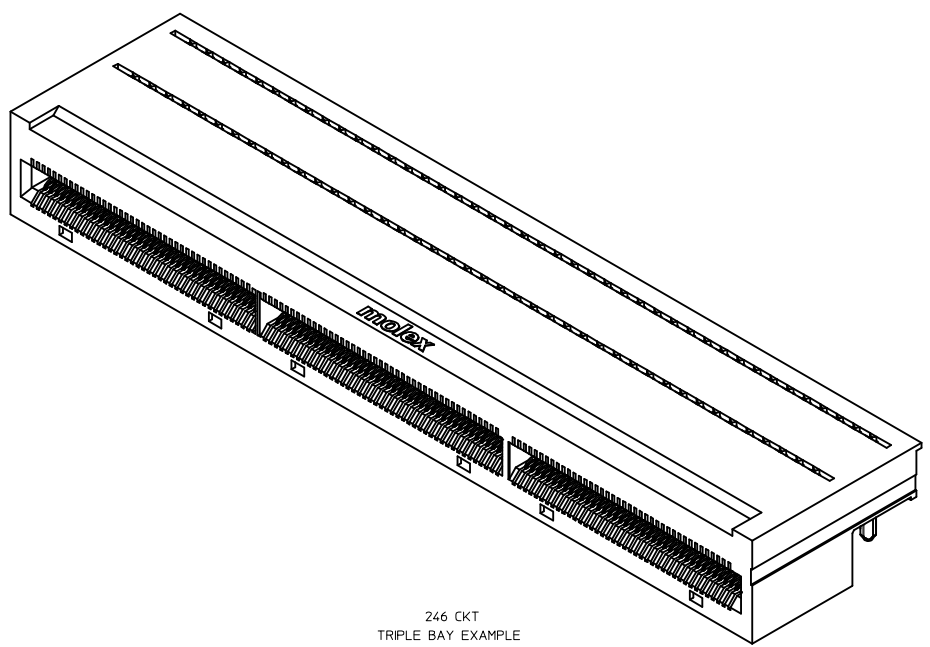
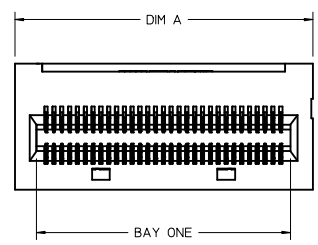
1. MATERIAL -
CONNECTOR HOUSING: GLASS FILLED LCP, 94V-0, BLACK
OVERMOLDING ON TERMINALS: GLASS FILLED LCP, 94V-0, BLACK
TERMINALS: COPPPER ALLOY, SPRING TEMPER
GROUNDING BAR: COPPER ALLOY
STIFFENER: 400 SERIES STAINLESS
2. TERMINAL FINISH (LEAD-FREE)
CONTACT AREA: 0.384mm OR 0.764mm HARD GOLD OVER 3.84mm MIN NICKEL,
COMPLIANT PIN AREA: .075-1.504mm MATTE TIN OVER 1.254mm MIN. NICKEL.
3. REFER TO PRODUCT SPEC, PS-170305-0001 FOR ALL ELECTRICAL, MECHANICAL AND ENVIRONMENTAL SPECIFICATIONS.
4. REFER TO PK-170082-0002 FOR ALL PACKAGING SPECIFICATIONS.
5. REFER TO AS-170305-0001 FOR ALL APPLICATION INFORMATION.
6. REFER TO AS-170305-0002 FOR ROUTING GUIDE INFORMATION.
7. DATE CODE AND ASSEMBLY PART NUMBER TO BE LASER ETCHED OR ON LABEL LOCATED ON THE BOTTOM OF THE PART. DATE CODE TO BE IN THE FORMAT OF, DAY OF THE YEAR AND LAST DIGIT OF THE YEAR, (DDDDYY).

| PART NUMBER | CIRCUITS | TOOLED | BAY | DIM A | BAY ONE | BAY TWO | BAY THREE | DIM B | DIM C | DIM D | DIM E |
|-------------|----------|-------------|----------------|--------|-------------|-------------|-------------|--------|-------|-------|-------|
| 170082-**50 | 50 | NO | SINGLE | 25.68 | 50 CIRCUITS | N/A | N/A | 22.60 | 21.00 | N/A | N/A |
| 170082-**62 | 62 | NO | SINGLE | 30.48 | 62 CIRCUITS | N/A | N/A | 27.40 | 25.80 | N/A | N/A |
| 170082-**80 | 80 | NO | SINGLE | 37.68 | 80 CIRCUITS | N/A | N/A | 34.60 | 33.00 | N/A | N/A |
| 170082-**98 | 98 | NO | SINGLE | 44.88 | 98 CIRCUITS | N/A | N/A | 41.80 | 40.20 | N/A | N/A |
| 170082-**18 | 118 | YES | DOUBLE | 54.48 | 56 CIRCUITS | 62 CIRCUITS | N/A | 51.40 | 23.70 | 26.10 | N/A |
| 170082-**54 | 154 | NO | DOUBLE | 68.88 | 74 CIRCUITS | 80 CIRCUITS | N/A | 65.80 | 30.90 | 33.30 | N/A |
| 170082-**74 | 174 | NO | TRIPLE | 78.48 | 56 CIRCUITS | 62 CIRCUITS | 56 CIRCUITS | 75.40 | 26.40 | 23.70 | 50.10 |
| 170082-**16 | 216 | SEE DRAWING | SD-170082-0216 | | | | | | | | |
| 170082-**46 | 246 | NO | TRIPLE | 107.28 | 80 CIRCUITS | 86 CIRCUITS | 80 CIRCUITS | 104.20 | 36.00 | 33.30 | 69.30 |

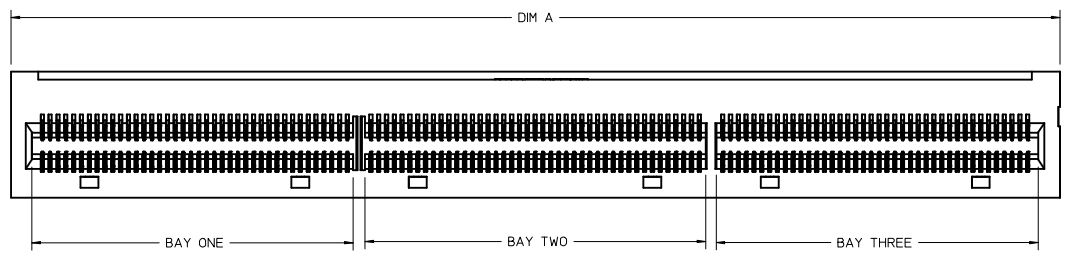
| | | | | | | | |
|---|---|---|---|---|--------------|------------------------|---|
| UPDATE PKG PRINT EC NO: UCP2015-0939 DRAWN BY: DRWIN/MOLFE 2015/01/29 CHECKED BY: CHYKMP/POFF 2015/01/29 APPROVED BY: APPRS/SMILLER 2015/02/02 DESCRIPTION: | QUALITY SYMBOLS | GENERAL TOLERANCES (UNLESS SPECIFIED) | DIMENSION STYLE | SCALE | DESIGN UNITS | THIRD ANGLE PROJECTION | |
| | ∇=0 ∇=0 ∇=0 | 4 PLACES ±---+--- 3 PLACES ±---+--- 2 PLACES ±0.13+--- 1 PLACE ±0.25+--- 0 PLACE ±---+--- | mm INCH ±--- ±--- ±0.13 ±--- ±0.25 ±--- ±--- ±--- | MM ONLY DRAWN BY: MWOLFE DATE: 2013/11/13 CHECKED BY: MPOFF DATE: 2014/05/27 APPROVED BY: SMILLER DATE: 2014/08/26 | 4:1 | METRIC | TITLE: .093 COPLANAR SALES DRAWING molex |
| | ANGULAR ±1/2° DRAFT WHERE APPLICABLE MUST REMAIN WITHIN DIMENSIONS | MATERIAL NO. SEE TABLE SIZE D | DOCUMENT NO. SD-170082-001 SHEET NO. 1 OF 6 | | | | |
| | THIS DRAWING CONTAINS INFORMATION THAT IS PROPRIETARY TO MOLEX INCORPORATED AND SHOULD NOT BE USED WITHOUT WRITTEN PERMISSION | | | | | | |



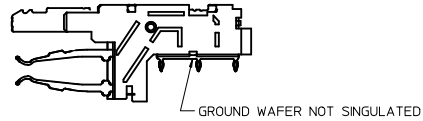
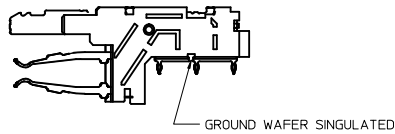
62 CKT
SINGLE BAY EXAMPLE



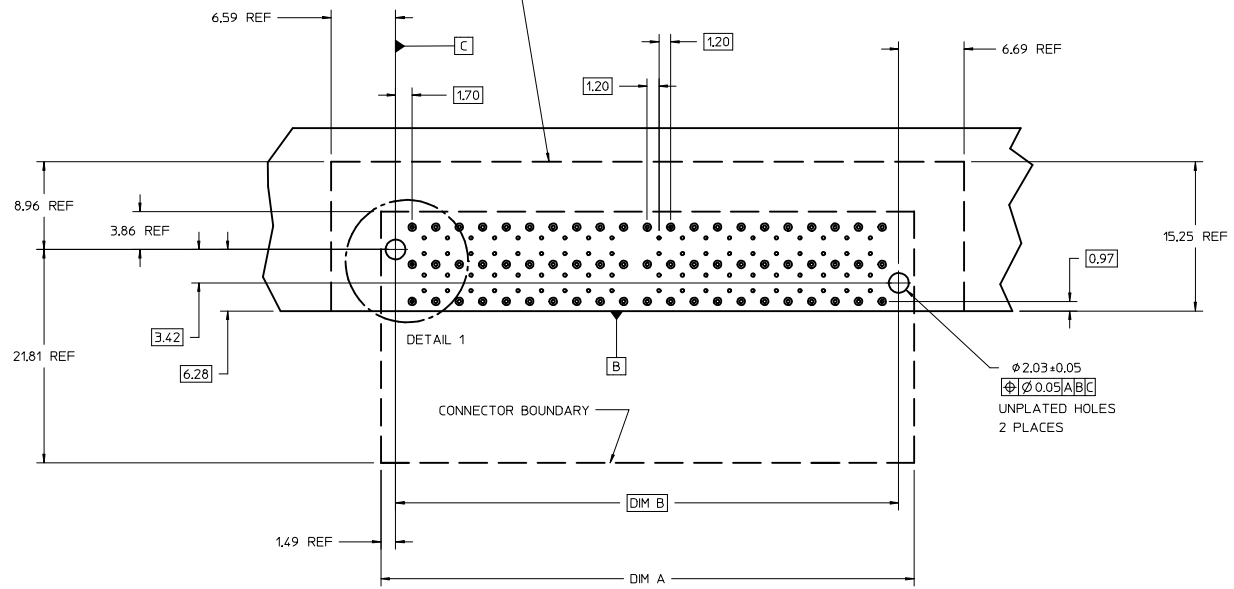
246 CKT
TRIPLE BAY EXAMPLE



| | | | | | | | |
|---|-----------------|--|---|---------------|--------------|------------------------|--|
| SEE SHEET 1 IEC NO: UCP2015-0939 DRAWN BY: MWOLFE 2015/01/29 CHECKED BY: CHYKHOFF 2015/01/29 APPROVED BY: APPR:SMILLER 2015/02/02 | QUALITY SYMBOLS | GENERAL TOLERANCES (UNLESS SPECIFIED) | DIMENSION STYLE | SCALE | DESIGN UNITS | THIRD ANGLE PROJECTION | |
| | ▽=0 | 4 PLACES ±--- ±--- | MM ONLY | 4:1 | METRIC | | |
| | ▽=0 | 3 PLACES ±--- ±--- | | | | | |
| | ▽=0 | 2 PLACES ±0.13 ±--- | | | | | |
| | | 1 PLACE ±0.25 ±--- | | | | | |
| | | 0 PLACE ±--- ±--- | | | | | |
| | | ANGULAR ±1/2° | | | | | |
| | | DRAFT WHERE APPLICABLE MUST REMAIN WITHIN DIMENSIONS | | | | | |
| | | | MATERIAL NO. | DOCUMENT NO. | | | |
| | | | SEE TABLE | SD-170082-001 | | | |
| | | | | | | SHEET NO. 2 OF 6 | |
| | | | THIS DRAWING CONTAINS INFORMATION THAT IS PROPRIETARY TO MOLEX INCORPORATED AND SHOULD NOT BE USED WITHOUT WRITTEN PERMISSION | | | | |



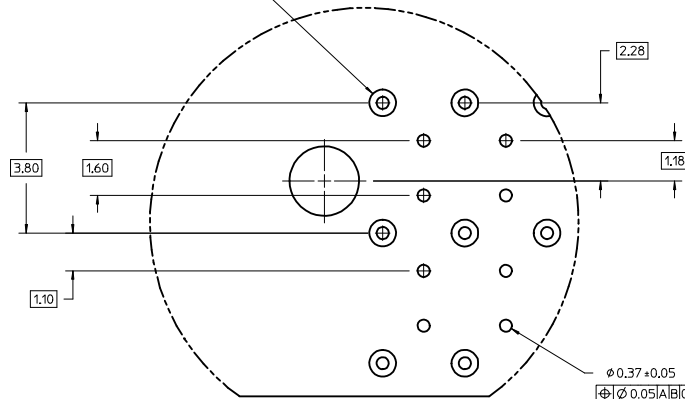
KEEP OUT ZONE FOR EXTRACTION TOOL
(5.1MM OUTSIDE CONNECTOR BOUNDARY)



$\phi 2.03 \pm 0.05$
 $\phi \phi 0.05 \text{A} \text{B} \text{C}$
UNPLATED HOLES
2 PLACES

118 CKT
DOUBLE BAY EXAMPLE

$\phi 0.78$
PAD SIZE TOP
AND BOTTOM - TYP

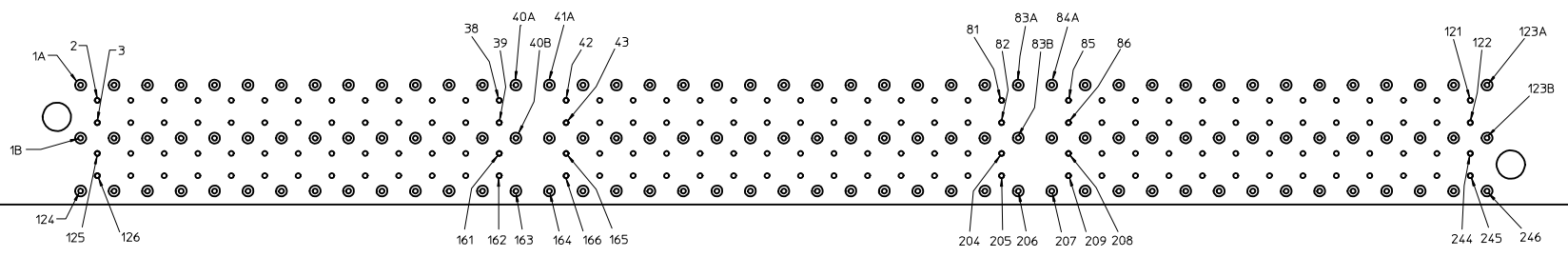


DETAIL 1
SCALE 14:1
RECOMMENDED TAIL PATTERN
SEE AS-170305-0002 FOR
INTERNAL ANTIPADS SPECIFICATION

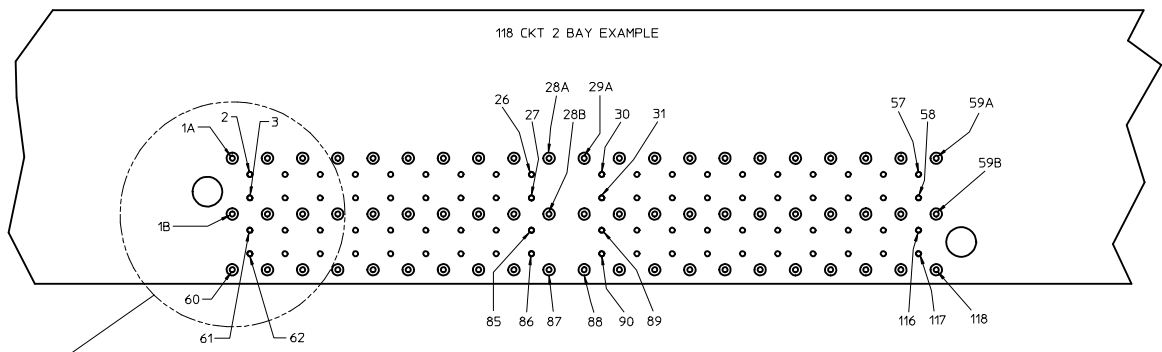
$\phi 0.37 \pm 0.05$
 $\phi \phi 0.05 \text{A} \text{B} \text{C}$
FINISHED PTH
0.457 DRILLED HOLE SIZE
0.0254 - 0.0635 ELECTRO-DEPOSITED
COPPER
TYP

| | | | | | | | | | | | |
|---|--|-------------|--|------------|---------------------------------------|------|---|------------|-----------------------------|--------------|------------------------|
| SEE SHEET 1 EC NO: UCP2015-0939 DRAWN BY: MWOLFE CHKD BY: CHYKHOFF APPROVED BY: APPR: SMILLER | DATE: 2015/01/29 2015/01/29 2015/02/02 | DESCRIPTION | QUALITY SYMBOLS | | GENERAL TOLERANCES (UNLESS SPECIFIED) | | DIMENSION STYLE | | SCALE | DESIGN UNITS | THIRD ANGLE PROJECTION |
| | | | $\nabla=0$ | $\nabla=0$ | mm | INCH | MM ONLY | 4:1 | METRIC | | |
| | | | $\nabla=0$ | $\nabla=0$ | 4 PLACES +--- | +--- | DRAWN BY | DATE | TITLE | | |
| | | | $\nabla=0$ | $\nabla=0$ | 3 PLACES +--- | +--- | MWOLFE | 2013/11/13 | .093 COPLANAR SALES DRAWING | | |
| | | | $\nabla=0$ | $\nabla=0$ | 2 PLACES +0.13 | +--- | CHECKED BY | DATE | molex | | |
| | | | $\nabla=0$ | $\nabla=0$ | 1 PLACE +0.25 | +--- | MPOFF | 2014/05/27 | | | |
| | | | $\nabla=0$ | $\nabla=0$ | 0 PLACE +--- | +--- | APPROVED BY | DATE | DOCUMENT NO. | | SHEET NO. |
| | | | $\nabla=0$ | $\nabla=0$ | ANGULAR $\pm 1/2^\circ$ | | SMILLER | 2014/08/26 | SD-170082-001 | | 3 OF 6 |
| | | | DRAFT WHERE APPLICABLE MUST REMAIN WITHIN DIMENSIONS | | SEE TABLE | | THIS DRAWING CONTAINS INFORMATION THAT IS PROPRIETARY TO MOLEX INCORPORATED AND SHOULD NOT BE USED WITHOUT WRITTEN PERMISSION | | | | |

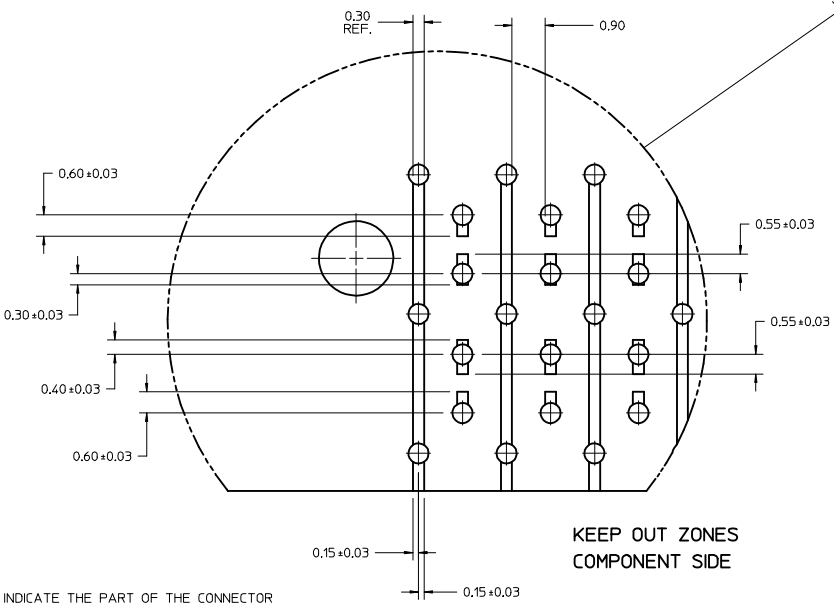
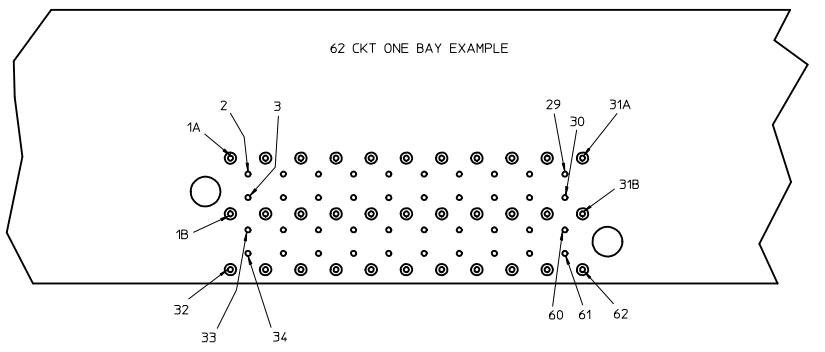
246 CKT 3 BAY EXAMPLE



118 CKT 2 BAY EXAMPLE



62 CKT ONE BAY EXAMPLE



KEEP OUT ZONES
COMPONENT SIDE

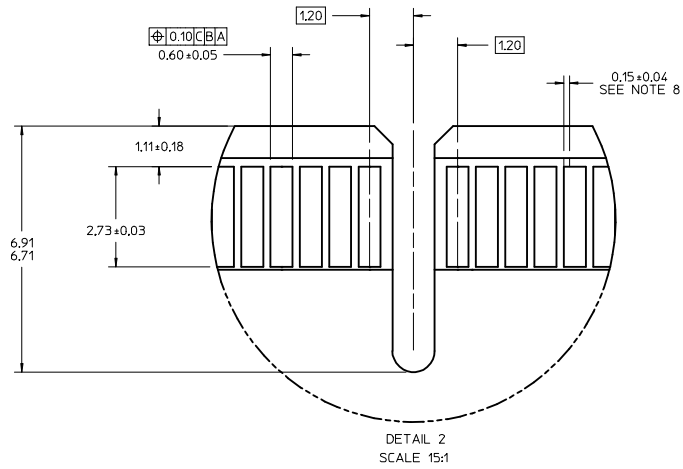
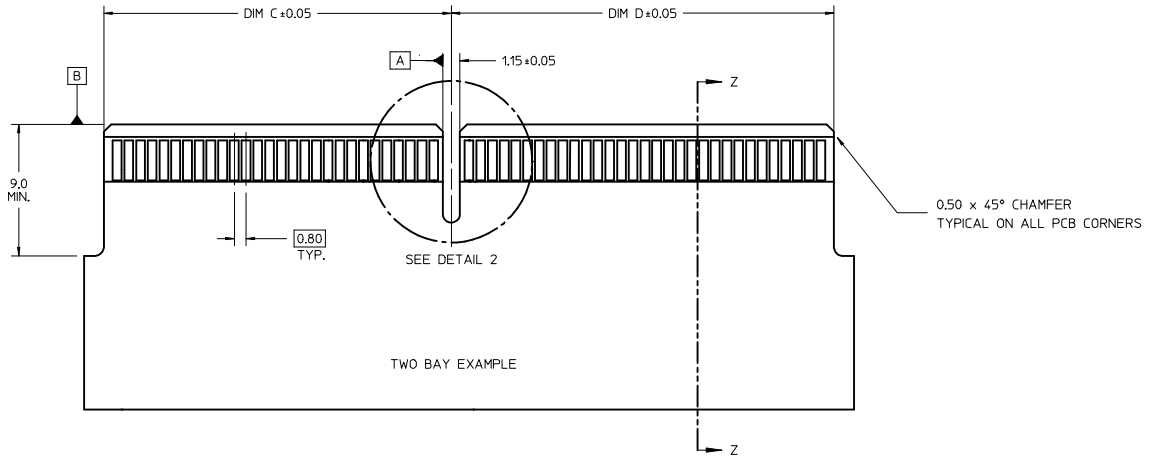
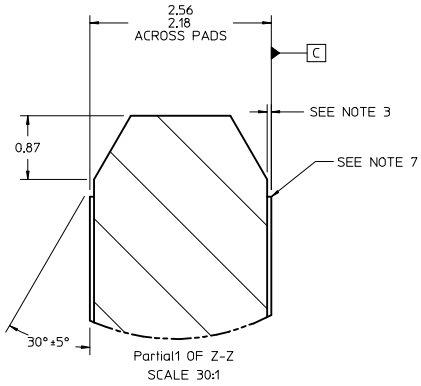
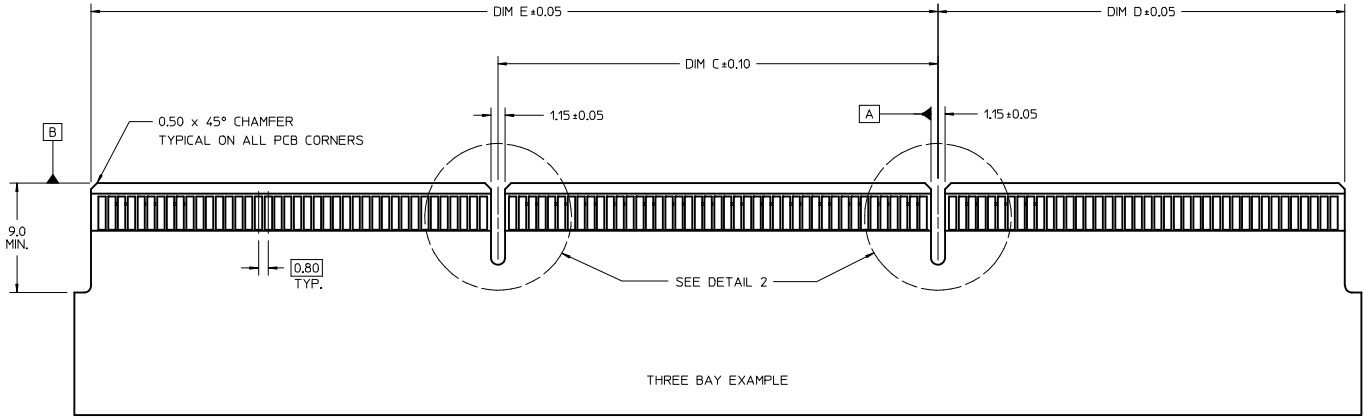
NOTE:
1. KEEP-OUT ZONES INDICATE THE PART OF THE CONNECTOR THAT MAY COME IN CONTACT WITH THE PCB. IT IS RECOMMENDED TO ROUTE TRACES AWAY FROM THESE AREAS.

| | | | | | | |
|--|--|---------------------------------------|--|-------------------------------|---------------------|--|
| SEE SHEET 1 EC NO: UCP2015-0939 DRAWN BY: MWOLFE 2015/01/29 CHECKED BY: CHYKHOFF 2015/01/29 APPR: SMILLER 2015/02/02 | QUALITY SYMBOLS | GENERAL TOLERANCES (UNLESS SPECIFIED) | DIMENSION STYLE | SCALE | DESIGN UNITS | THIRD ANGLE PROJECTION |
| | ∇=0 ∇=0 ∇=0 | mm INCH | MM ONLY | 4:1 | METRIC | DRAWN BY: MWOLFE 2013/11/13 CHECKED BY: YPOFF 2014/05/27 APPROVED BY: SMILLER 2014/08/26 |
| | ANGULAR ±1/2° DRAFT WHERE APPLICABLE MUST REMAIN WITHIN DIMENSIONS | MATERIAL NO. SEE TABLE | DATE TITLE .093 COPLANAR SALES DRAWING | DOCUMENT NO. SD-170082-001 | SHEET NO. 4 OF 6 | |

THIS DRAWING CONTAINS INFORMATION THAT IS PROPRIETARY TO MOLEX INCORPORATED AND SHOULD NOT BE USED WITHOUT WRITTEN PERMISSION

NOTE:

- CONNECTOR LAND CONDITIONS SHALL MEET THE MOST CURRENT REVISION OF PCB SPECIFICATION IPC-6012C-2010 SECTION 3.5.4.4.
- DIMENSIONS APPLY TO PADS ON BOTH SIDES OF THE BOARD.
- THE THICKNESS OF THE OUTER METAL LAYERS, INCLUDING FOIL, COPPER PLATING, AND THE PROTECTIVE SURFACE, SHALL BE 0.066 MAX.
- CHAMFER ROUGHNESS NOT TO EXCEED 3.17 MICROMETERS.
- CHAMFER PROCESS SHALL NOT DAMAGE THE GOLD EDGE LANDS.
- EDGE CARD CHAMFER NOT TO GO THRU GOLD LANDS.
- 0.03mm MAX PLATING OVERHANG ON ALL GOLD LAND EDGES.
- MOLEX RECOMMENDS NO TIE-BARS ON THE LEADING EDGE OF THE GOLD LAND. IF TIE-BARS ARE USED, THEY SHALL BE PLACED ON ONE SIDE OF THE GOLD LAND, APPLIES TO ALL GOLD LANDS.

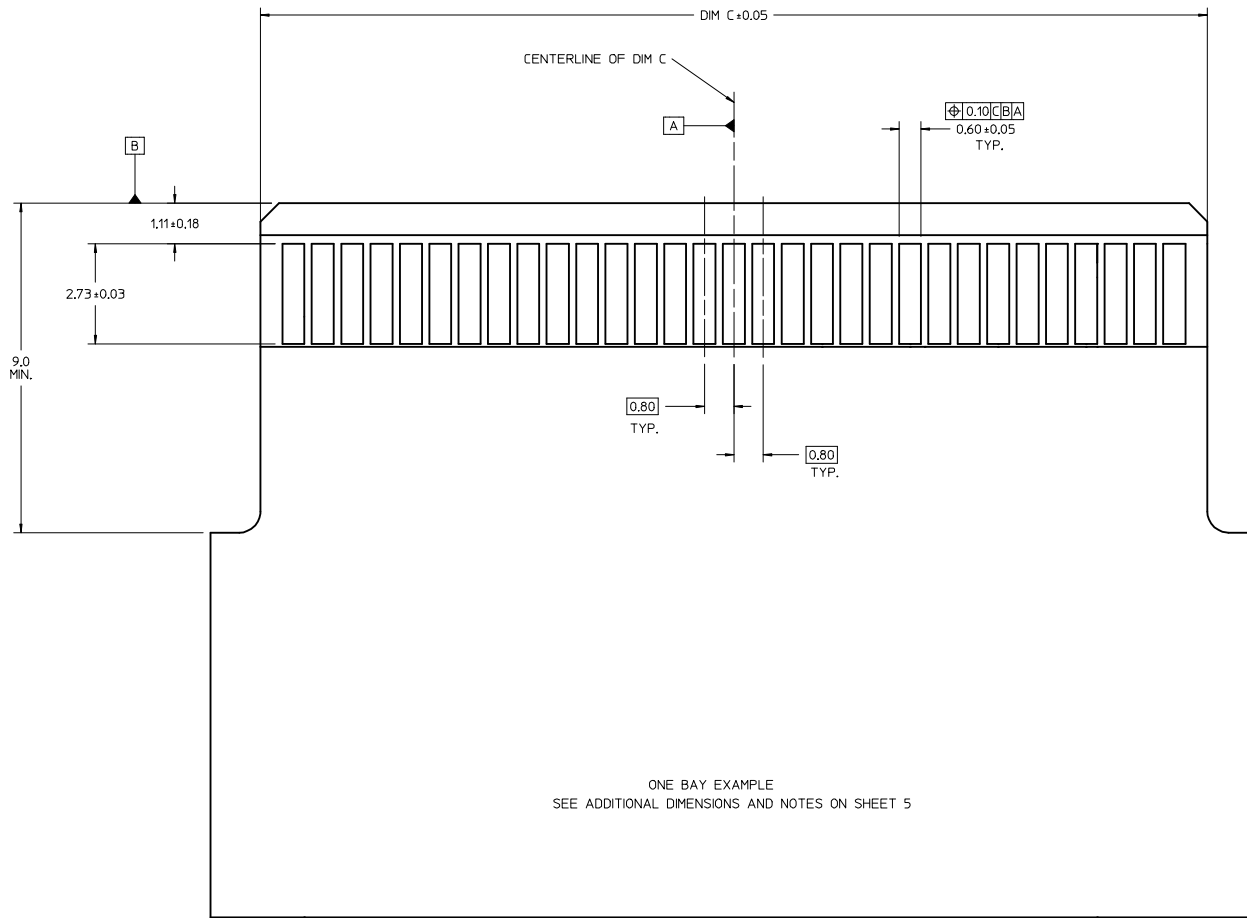


| | | | | | | |
|--|-----------------|--|-----------------|---------------|--------------|------------------------|
| SEE SHEET 1 EC NO: UCP2015-0939 DRAWN BY: MWOLFE CHECKED BY: CHOKHOPFF APPROVED BY: APPERSMILLER DATE: 2015/01/29 DATE: 2015/01/29 DATE: 2015/02/02 | QUALITY SYMBOLS | GENERAL TOLERANCES (UNLESS SPECIFIED) | DIMENSION STYLE | SCALE | DESIGN UNITS | THIRD ANGLE PROJECTION |
| | ▽=0 | 4 PLACES ±--- mm ±--- INCH | MM ONLY | 4:1 | METRIC | |
| | ▽=0 | 3 PLACES ±--- mm ±--- INCH | | | | |
| | ▽=0 | 2 PLACES ±0.13 mm ±--- INCH | | | | |
| | | 1 PLACE ±0.25 mm ±--- INCH | | | | |
| | | 0 PLACE ±--- mm ±--- INCH | | | | |
| | | ANGULAR ±1/2° | | | | |
| | | DRAFT WHERE APPLICABLE MUST REMAIN WITHIN DIMENSIONS | | | | |
| | | | MATERIAL NO. | DOCUMENT NO. | | |
| | | | SEE TABLE | SD-170082-001 | | |
| | | | | | | SHEET NO. 5 OF 6 |

.093 COPLANAR SALES DRAWING

molex

THIS DRAWING CONTAINS INFORMATION THAT IS PROPRIETARY TO MOLEX INCORPORATED AND SHOULD NOT BE USED WITHOUT WRITTEN PERMISSION



ONE BAY EXAMPLE
SEE ADDITIONAL DIMENSIONS AND NOTES ON SHEET 5

| | | | | | | | |
|---|-----------------|--|---|---------------|--------------|------------------------|--|
| SEE SHEET 1 IEC NO: UCP2015-0939 DRAWN BY: MWOLFE 2015/01/29 CHECKED BY: CHYKOROFF 2015/01/29 APPR: SMILLER 2015/02/02 | QUALITY SYMBOLS | GENERAL TOLERANCES (UNLESS SPECIFIED) | DIMENSION STYLE | SCALE | DESIGN UNITS | THIRD ANGLE PROJECTION | |
| | ▽=0 | 4 PLACES ± mm ± INCH | MM ONLY | 15:1 | METRIC | ☉ | |
| | ▽=0 | 3 PLACES ± 0.13 ± 0.25 | | | | | |
| | ▽=0 | 1 PLACE ± 0.25 ± | | | | | |
| | ANGULAR ±1/2° | DRAFT WHERE APPLICABLE MUST REMAIN WITHIN DIMENSIONS | MATERIAL NO. | DOCUMENT NO. | | SHEET NO. | |
| | | | SEE TABLE | SD-170082-001 | | 6 OF 6 | |
| | | | THIS DRAWING CONTAINS INFORMATION THAT IS PROPRIETARY TO MOLEX INCORPORATED AND SHOULD NOT BE USED WITHOUT WRITTEN PERMISSION | | | | |