

# 0RQB-50Y15x

## Isolated DC-DC Converter

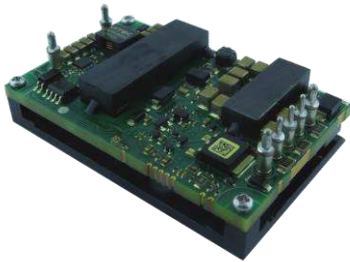
The 0RQB-50Y15x is an isolated DC/DC converter providing 50 W of output power from a wide input range (24V/48V/72V/96V/110V typical). Standard features include remote on/off, input under-voltage protection, output over-voltage protection, over current and short circuit protection.

This converter can also provide a 5V/5mA auxiliary supply. When a large hold-up capacitor is added, the converter can still work up to 12ms when the input supply is interrupted.

Conformal coated PCB is used for environmental ruggedness.

### Key Features & Benefits

- 24/48/72/96/110 VDC Input / 15 VDC @ 3.3 A Output
- Reinforced isolation
- High Efficiency
- Hold-up function
- Remote ON/OFF
- Conformal coated
- Input under-voltage lockout
- Input under-voltage protection
- Output over-voltage protection
- Over current and short circuit protection
- 5V auxiliary supply at primary side
- Wide input range (24V/48V/72V/96V/110V typical)
- Approved to IEC/EN 62368-1
- Approved to CSA/UL 62368-1
- Class II, Category 2, Isolated DC/DC Converter (refer to IPC-9592B)



### Applications

- Industrial
- Railways

## 1. MODEL SELECTION

MODEL NUMBER	OUTPUT VOLTAGE	INPUT VOLTAGE	MAX. OUTPUT CURRENT	MAX. OUTPUT POWER	TYPICAL EFFICIENCY
ORQB-50Y15L	15 VDC	24/48/72/96/110 VDC	3.3 A	50 W	90% @110 V

**NOTE:** Add "G" suffix at the end of the model number to indicate Tray Packaging.

### PART NUMBER EXPLANATION

0	R	QB	-	50	Y	15	L	G
Mounting Type	RoHS Status	Series Name		Output Power	Input Range	Output Voltage	Active Logic	Package Type
Through hole mount	RoHS	1/4th Brick		50 W	14.4-154V	15 V	L- Active low, with baseplate 0- Active high, with baseplate F- Active low, with flange E- Active high, with flange	G – Tray package

## 2. ABSOLUTE MAXIMUM RATINGS

PARAMETER	DESCRIPTION	MIN	TYP	MAX	UNITS
Continuous non-operating Input Voltage		-0.5	-	200	V
Remote On/Off		-0.3	-	15	V
Operating Temperature	Hot spot temperature, see Thermal Derating Curves section	-40	-	105	°C
Storage Temperature		-55	-	125	°C
Altitude		-	-	5000	m

**NOTE:** Ratings used beyond the maximum ratings may cause a reliability degradation of the converter or may permanently damage the device.

### 3. INPUT SPECIFICATIONS

All specifications are typical at 25°C unless otherwise stated.

PARAMETER	DESCRIPTION	MIN	TYP	MAX	UNIT
Operating Input Voltage 1	Fully functioning for long term operation.	14.4	24		V
			48		V
			72	154	V
			96		V
			110		V
Operating Input Voltage 2	Fully functioning for 0.1s operation Full function is not guaranteed but undamaged for 1s operation.	12.9 154	-	14.4	V
			-	200	V
Input Voltage Rising Slope		-	-	2	V/ms
Input Current (full load)		-	-	4.5	A
Input Current (no load)	Vin=48V	-	80	120	mA
	Vin=110V	-	50	75	mA
Remote Off Input Current		-	-	40	mA
Input Reflected Ripple Current (rms)	With simulated source impedance of 12uH, 5Hz to 20MHz. Use a 100uF/200V electrolytic capacitor with ESR=0.5 ohm max, at 200KHz@20°C..	-	-	150	mA
Input Reflected Ripple Current (pk-pk)		-	-	500	mA
Turn-on Voltage Threshold		12.5	13.5	14.4	V
Turn-off Voltage Threshold		11	12	12.9	V
Over-voltage Recovery Threshold		156	160	164	V
Over-voltage Shutdown Threshold		162	165	168	V
Input L/C	Inner inductance	-	3.3	-	uH
	Inner capacitance, Ctotal	-	3.2	-	uF
Input Capacitance	Outside capacitance, typically electrolytic capacitors.	100	-	-	uF
Recommended input fast-acting fuse on system board	<b>CAUTION:</b> This converter is not internally fused. An input line fuse must be used in application.	-	15	-	A

#### 4. OUTPUT SPECIFICATIONS

All specifications are typical at nominal input, full load at 25°C unless otherwise stated.

PARAMETER	DESCRIPTION	MIN	TYP	MAX	UNIT
Output Voltage Set Point		14.76	15	15.24	V
Load Regulation		-	-	50	mV
Line Regulation		-	-	50	mV
Regulation Over Temperature		-	-	±100	mV
Output Ripple and Noise(Pk-Pk)	With a 100uF ceramic and a 100uF electrolytic capacitors at output, Vin=48V	-	80	150	mV
Output Ripple and Noise(RMS)		-	20	50	mV
Output Current Range		0	-	3.3	A
Output DC Current Limit	Enter a hiccup mode, non-latching.	3.6	-	4.6	A
Rise time		-	-	70	ms
Output pre-bias Voltage		0	-	3	V
Start-up time	Start up from Vin	-	-	1500	ms
	Start up from remote on/off	-	-	120	ms
Overshoot at Turn on		-	0	3	%
Output Capacitance	Typically 50% ceramic and 50% electrolytic capacitors.	200	-	1000	uF
5V Auxiliary Supply Source Current		-	-	5	mA
<b>Transient Response</b>					
ΔV 50%~75% of Max Load		-	300	400	mV
Settling Time	di/dt=0.1A/us, with a 100uF ceramic and a 100uF electrolytic capacitors near the birck output.	-	0.5	1	ms
ΔV 75%~50% of Max Load		-	300	400	mV
Settling Time		-	0.5	1	ms

## 5. GENERAL SPECIFICATIONS

PARAMETER	DESCRIPTION	MIN	TYP	MAX	UNIT
Efficiency	Vin=24V, Iout=3.3A at 25°C	-	87	-	%
	Vin=48V, Iout=3.3A at 25°C	-	89	-	%
	Vin=110V, Iout=3.3A at 25°C	-	90	-	%
Switching Frequency	1st stage	-	150	-	kHz
	2nd stage	-	250	-	kHz
Over Temperature Protection	Temperature measured at semiconductor component	-	125	-	°C
Over Voltage Protection(Static)	Enter a latching.non-hiccup mode	-	17	-	V
FIT	Calculated Per IEC 62380 TR1 (UTEK 80-810)	-	TBD	-	
MTBF	(Vin=24 V, Vo=15V, Io=3.3A, Ta = 25C)	-	TBD	-	Mhrs
Weight	For baseplate version	-	63	-	g
Dimensions	For baseplate version				
Inches (L x W x H)		2.30 x 1.45x 0.59			Inches
Millimeters (L x W x H)	58.42 x 36.75 x 15			Millimeters	
<b>Isolation characteristics</b>					
Input to Output		-	-	3000	Vdc
Input to Heatsink		-	-	3000	Vdc
Output to Heatsink		-	-	3000	Vdc
Isolation Resistance	Test with 500VDC	100M	-	-	Ohm
Isolation Capacitance		-	-	2200	pF

## 6. EFFICIENCY DATA

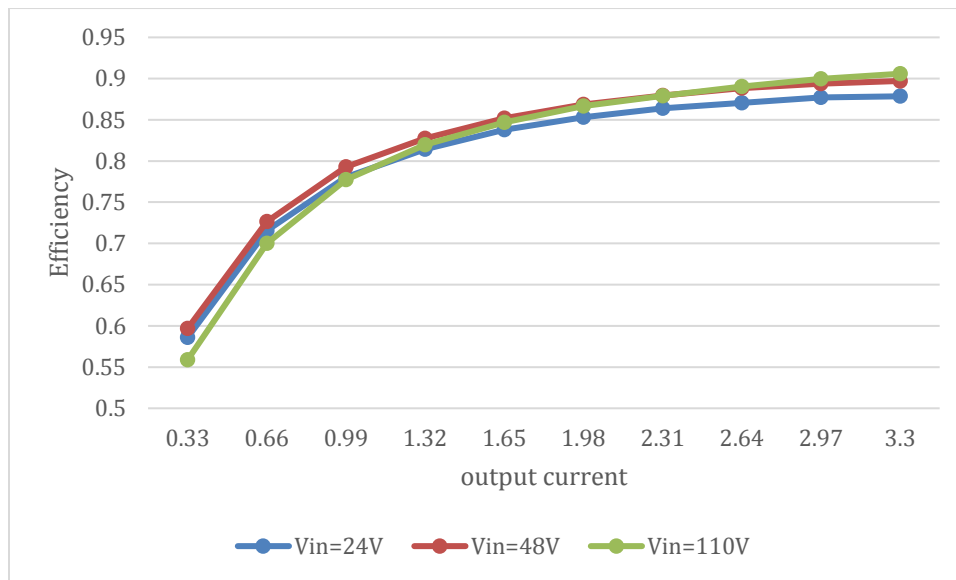


Figure 1. Efficiency data

**7. REMOTE ON/OFF**

PARAMETER	DESCRIPTION	MIN	TYP	MAX	UNIT
Signal Low (Unit On)	Active Low	-0.3	-	0.8	V
Signal High (Unit Off)		2.4	-	15	V
Signal Low (Unit Off)	Active High	-0.3	-	0.8	V
Signal High (Unit On)		2.4	-	15	V
Current Sink		0	-	1	mA

Recommended remote on/off circuit for active low

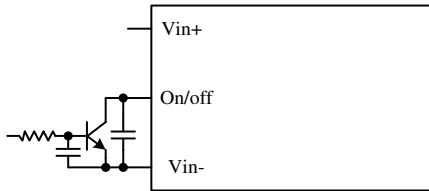


Figure 2. Control with open collector/drain circuit

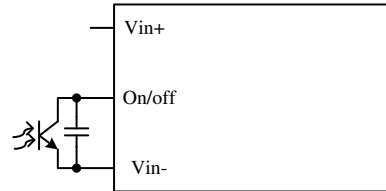


Figure 3. Control with photocoupler circuit

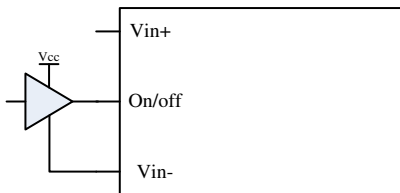


Figure 4. Control with logic circuit

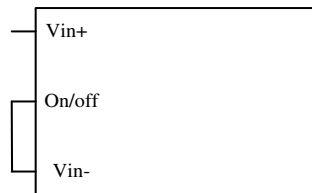


Figure 5. Permanently on

Recommended remote on/off circuit for active high

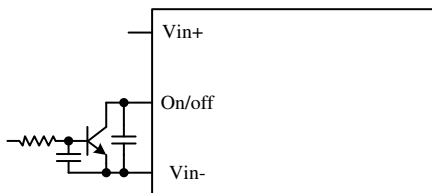


Figure 6. Control with open collector/drain circuit

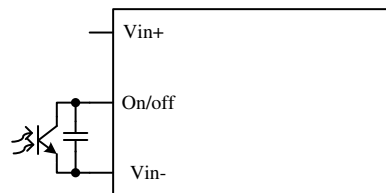


Figure 7. Control with photocoupler circuit

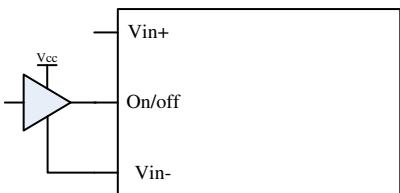


Figure 8. Control with logic circuit

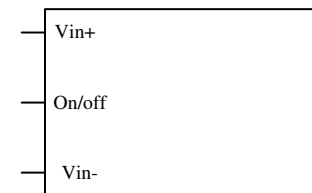


Figure 9. Permanently on

**8. INPUT NOISE**

Input reflected ripple current

Testing set up

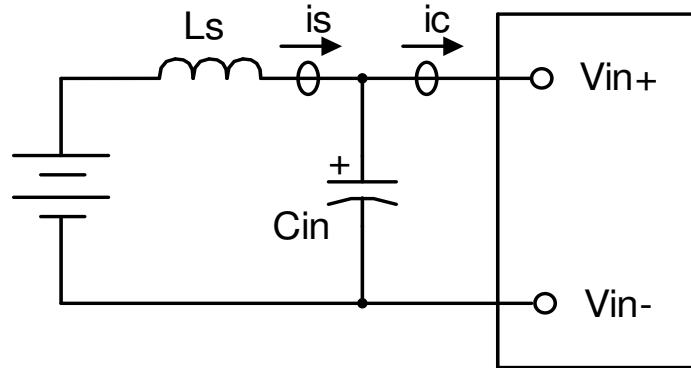


Figure 10.

Notes and values in testing.

is: Input Reflected Ripple Current

ic: Input Terminal Ripple Current

Ls: Simulated Source Impedance (12μH)

Cin: Electrolytic capacitor, should be as closed as possible to the power module to swallow ic ripple current and help with stability.

Recommendation: 100μF, ESR<0.5R @ 100 kHz, 20C

Below measured waveforms are based on above simulated and recommended inductance and capacitance

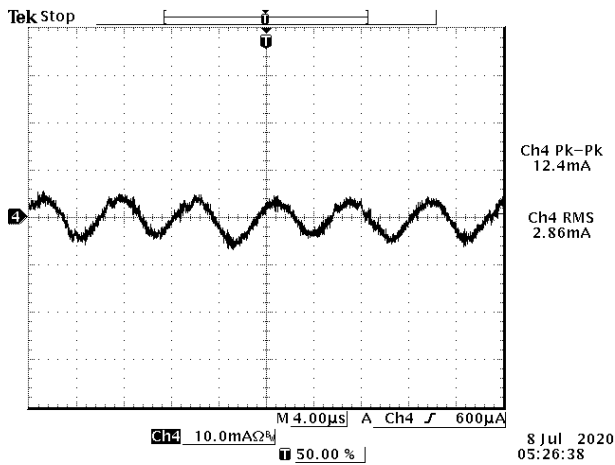


Figure 11. is (input reflected ripple current), AC component

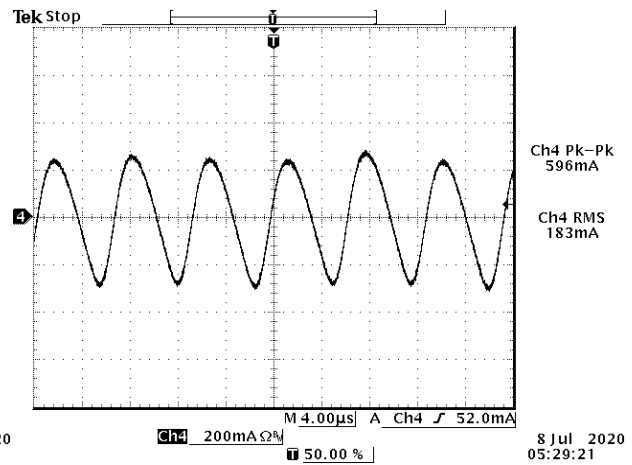


Figure 12. ic (input terminal ripple current), AC component

**Test condition:** 48Vdc input, 15Vdc/3.3A output and Ta=25 deg C, with 200μF capacitor at output

**INPUT NOISE (CONTINUED)**

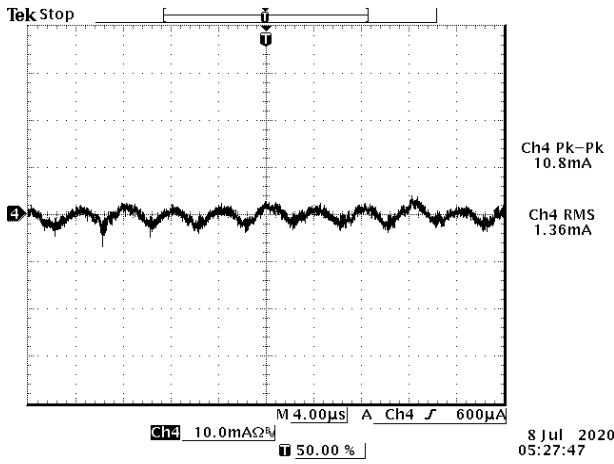


Figure 13.  $i_s$  (input reflected ripple current), AC component

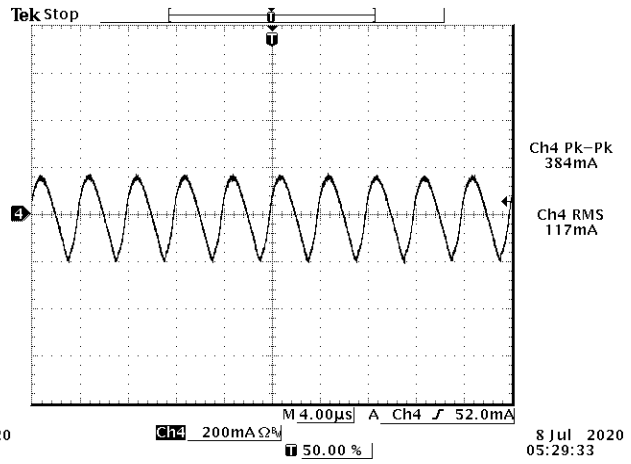


Figure 14.  $i_c$  (input terminal ripple current), AC component

**Test condition:** 110Vdc input, 15Vdc/3.3A output and  $T_a=25$  deg C, with 200μF capacitor at output



## 9. RIPPLE AND NOISE WAVEFORM

Testing setup

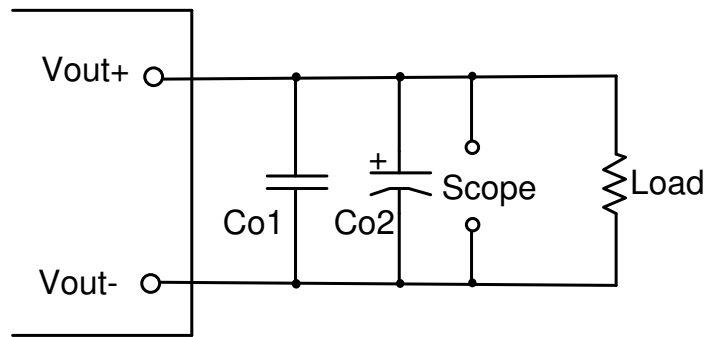


Figure 15.

Notes and values in testing.

Co1: 100uF ceramic capacitor

Co2: 100uF POSCAP capacitor

The capacitor should be as close as possible to the power module to swallow ripple current and help with stability.

Below measured waveforms are based on above capacitance.

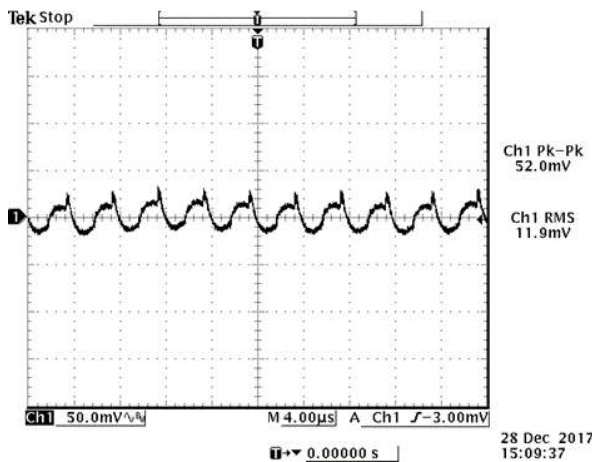


Figure 16. Ripple and noise,  $V_{in}=48V_{dc}$ ,  $15V_{dc}/3.3A$  output @  $T_a=25^{\circ}C$  with  $C_{ext}=200\mu F$

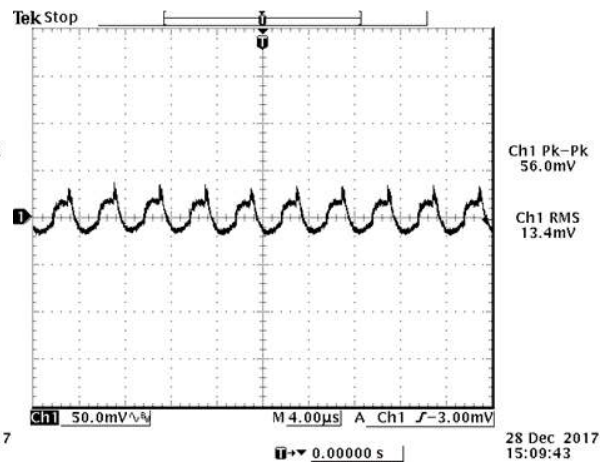


Figure 17. Ripple and noise,  $V_{in}=110V_{dc}$ ,  $15V_{dc}/3.3A$  output @  $T_a=25^{\circ}C$  with  $C_{ext}=200\mu F$

10. TRANSIENT RESPONSE WAVEFORMS

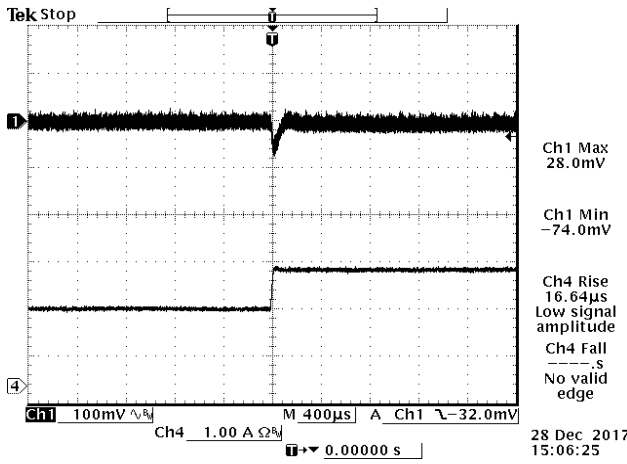


Figure 18. 50%-75% Load Transients at  $V_{in}=48V$  @ $T_a=25^{\circ}C$  with  $C_{ext}=200\mu F$

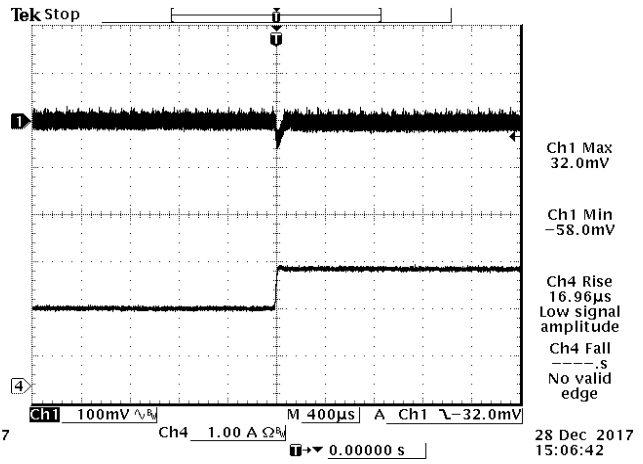


Figure 19. 50%-75% Load Transients at  $V_{in}=110V$  @ $T_a=25^{\circ}C$  with  $C_{ext}=200\mu F$

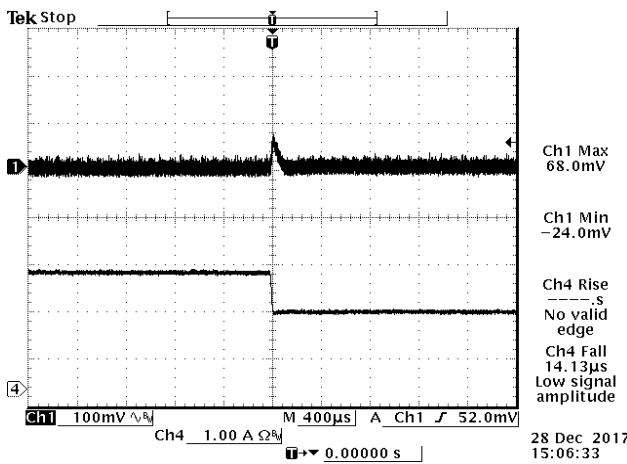


Figure 20. 75%-50% Load Transients at  $V_{in}=48V$  @ $T_a=25^{\circ}C$  with  $C_{ext}=200\mu F$

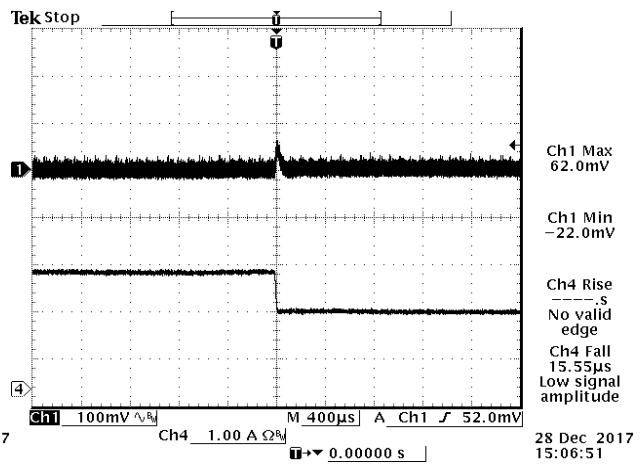


Figure 21. 75%-50% Load Transients at  $V_{in}=110V$  @ $T_a=25^{\circ}C$  with  $C_{ext}=200\mu F$

**11. STARTUP & SHUTDOWN**

Turn on rise time

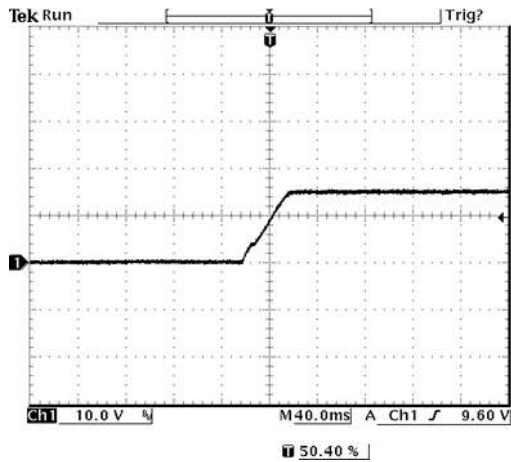


Figure 22.  $V_{in}=48V$ ,  $I_o=3.3A$ ,  $V_o=15V$  with  $C_{ext}=200\mu F$

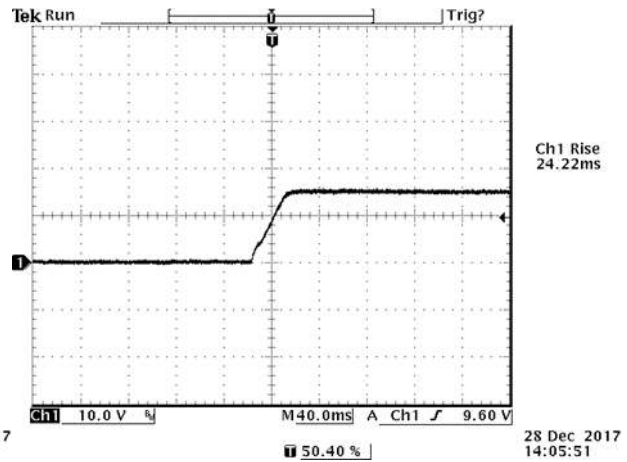


Figure 23.  $V_{in}=110V$ ,  $I_o=3.3A$ ,  $V_o=15V$  with  $C_{ext}=200\mu F$

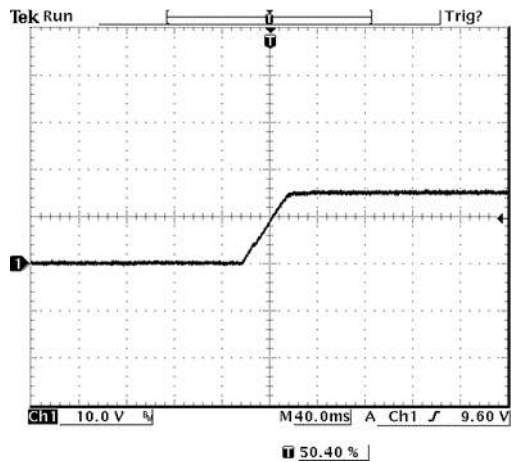


Figure 24.  $V_{in}=48V$ ,  $I_o=3.3A$ ,  $V_o=15V$  with  $C_{ext}=1200\mu F$

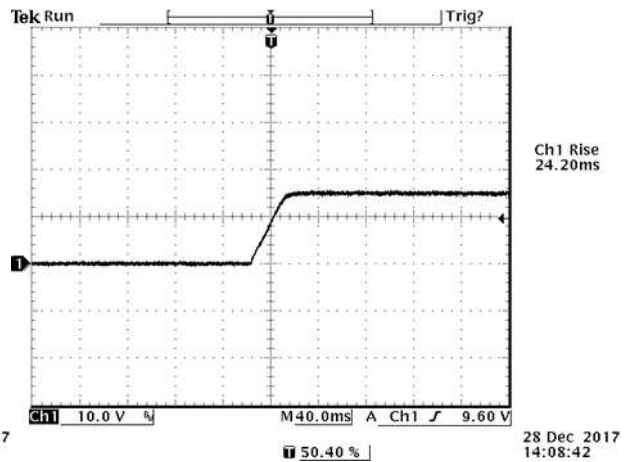


Figure 25.  $V_{in}=110V$ ,  $I_o=3.3A$ ,  $V_o=15V$  with  $C_{ext}=1200\mu F$

**STARTUP & SHUTDOWN (CONTINUED)**

Turn on delay time

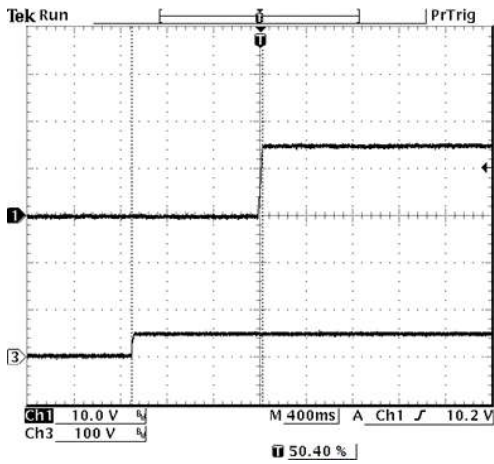


Figure 26. Startup from Vin

Ch1: Vo  
Ch2: Vin

Test Condition: Vin=48V, Io=3.3A, Vo=15V  
with Cext=200uF

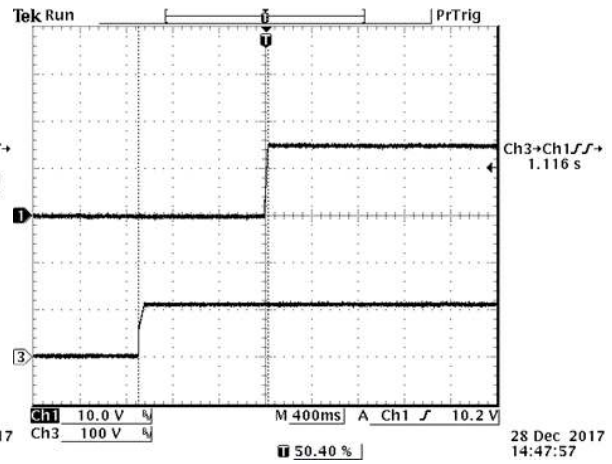


Figure 27. Startup from Vin

Ch1: Vo  
Ch2: Vin

Test Condition: Vin=110V, Io=3.3A, Vo=15V  
with Cext=200uF

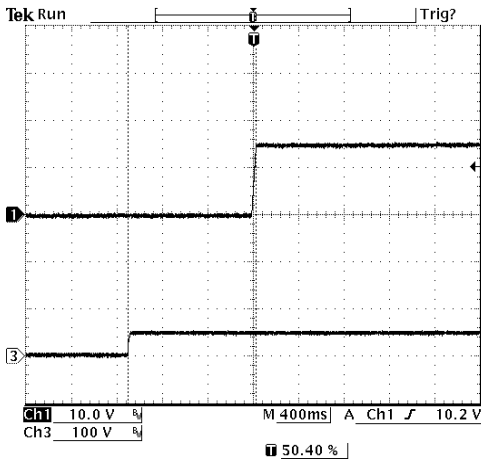


Figure 28. Startup from Vin

Ch1: Vo  
Ch2: Vin

Test Condition: Vin=48V, Io=3.3A, Vo=15V  
with Cext=1200uF

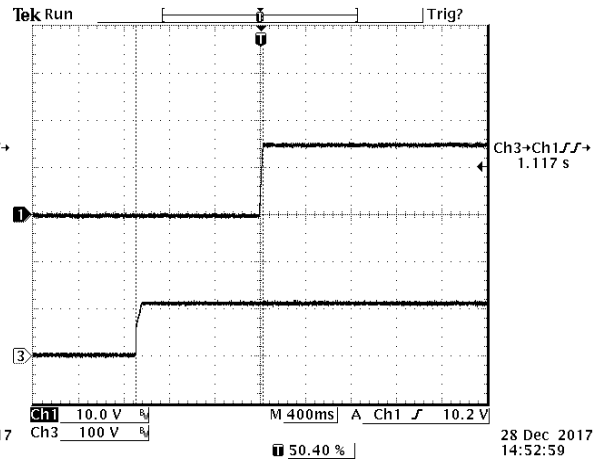


Figure 29. Startup from Vin

Ch1: Vo  
Ch2: Vin

Test Condition: Vin=110V, Io=3.3A, Vo=15V  
with Cext=1200uF

**STARTUP & SHUTDOWN (CONTINUED)**

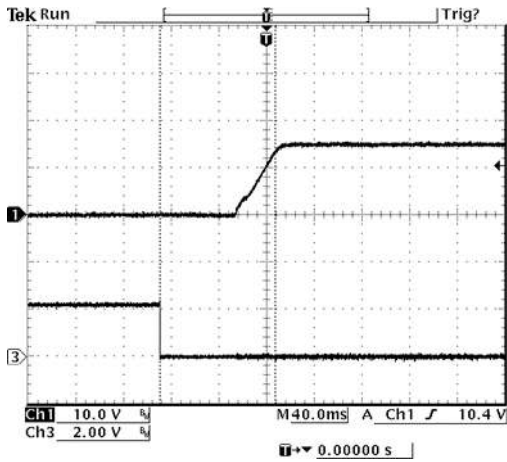


Figure 30. Startup from on/off

Ch1: Vo  
Ch2: on/off

Test Condition: Vin=48V, Io=3.3A, Vo=15V  
with Cext=200uF

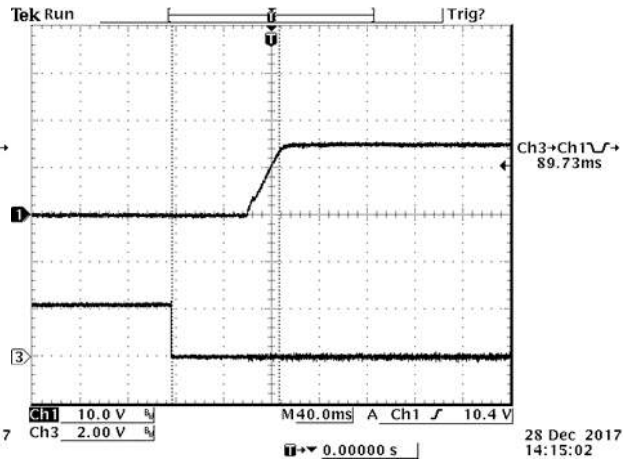


Figure 31. Startup from on/off

Ch1: Vo  
Ch2: on/off

Test Condition: Vin=110V, Io=3.3A, Vo=15V  
with Cext=200uF

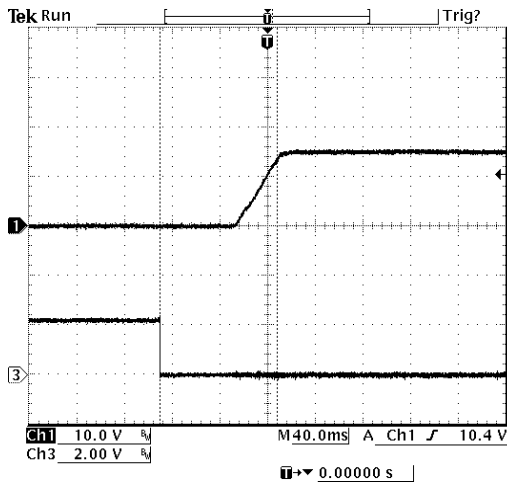


Figure 32. Startup from on/off

Ch1: Vo  
Ch2: on/off

Test Condition: Vin=48V, Io=3.3A, Vo=15V  
with Cext=1200uF

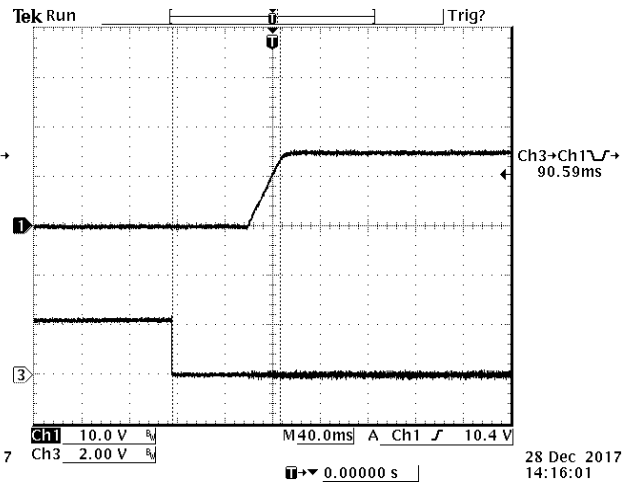


Figure 33. Startup from on/off

Ch1: Vo  
Ch2: on/off

Test Condition: Vin=110V, Io=3.3A, Vo=15V  
with Cext=1200uF

**STARTUP & SHUTDOWN (CONTINUED)**

**Shut down time**

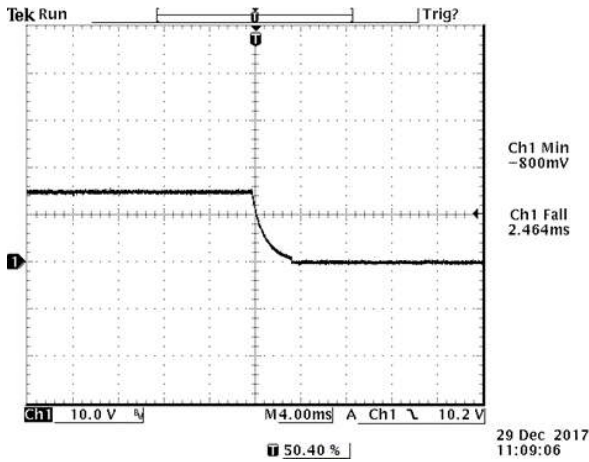


Figure 34. Typical Shut down From Vin

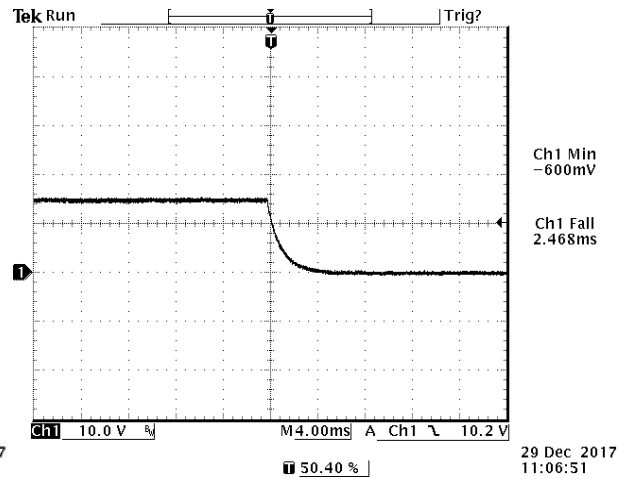


Figure 35. Typical Shut down From Venable

**Test Condition:** 48Vdc input, 15Vdc/3.3A output and Ta=25 deg C, with 200µF capacitor at output

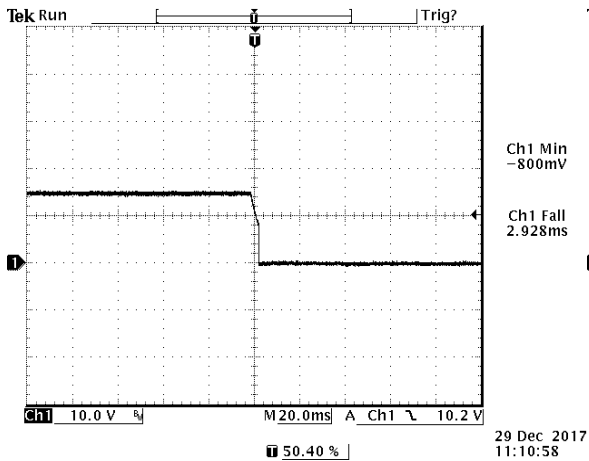


Figure 36. Typical Shut down From Vin

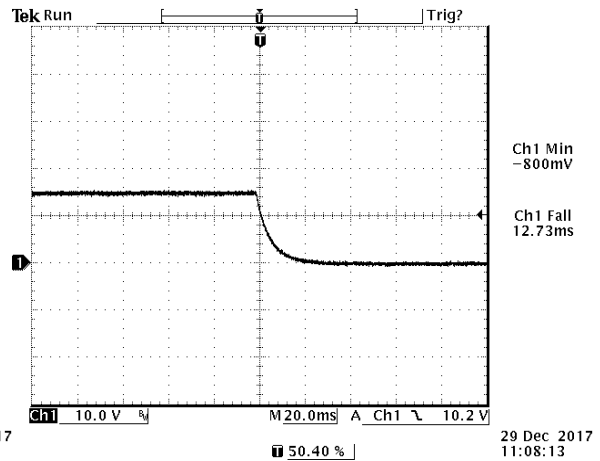


Figure 37. Typical Shut down From Venable

**Test Condition:** 48Vdc input, 15Vdc/3.3A output and Ta=25 deg C, with 1200µF capacitor at output

**STARTUP & SHUTDOWN (CONTINUED)**

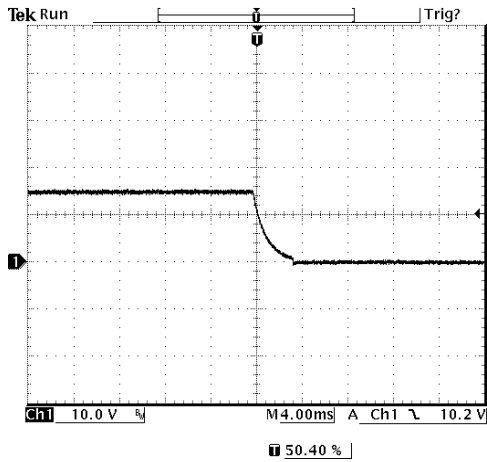


Figure 38. Typical Shut down From Vin

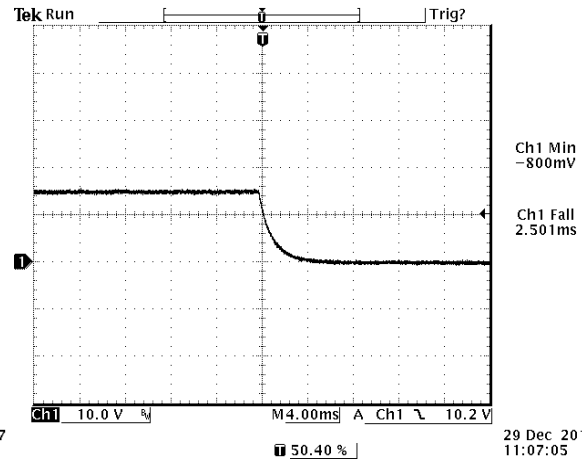


Figure 39. Typical Shut down From Venable

**Test Condition:** 110Vdc input, 15Vdc/3.3A output and Ta=25 deg C, with 200µF capacitor at output

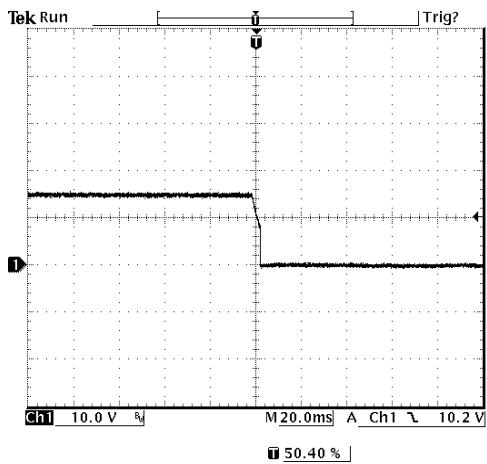


Figure 40. Typical Shut down From Vin

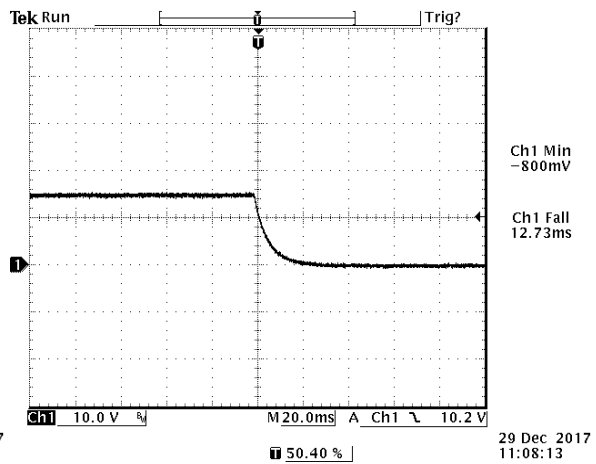


Figure 41. Typical Shut down From Venable

**Test Condition:** 110Vdc input, 15Vdc/3.3A output and Ta=25 deg C, with 1200µF capacitor at output

### 12. OVER CURRENT PROTECTION

Hiccup: To provide protection in a fault output overload condition, the module is equipped with internal current-limiting circuitry and can endure current limiting for a few milli-seconds. If the overcurrent condition persists beyond a few milliseconds, the module will shut down into hiccup mode and restart once every 1600mS. The module operates normally when the output current goes into specified range. The typical average output current is 0.1A during hiccup.

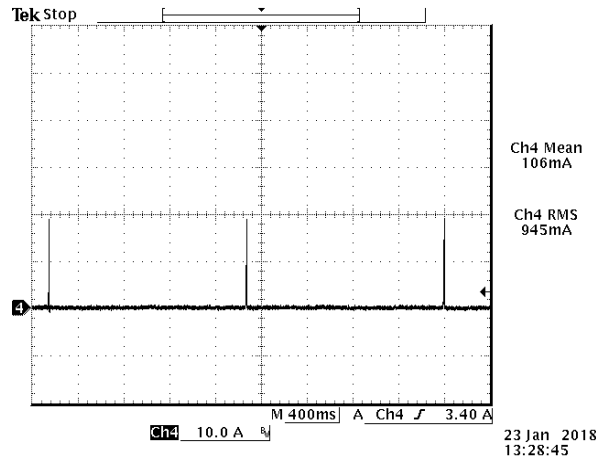


Figure 42. Over current protection

### 13. INPUT UNDER-VOLTAGE LOCKOUT

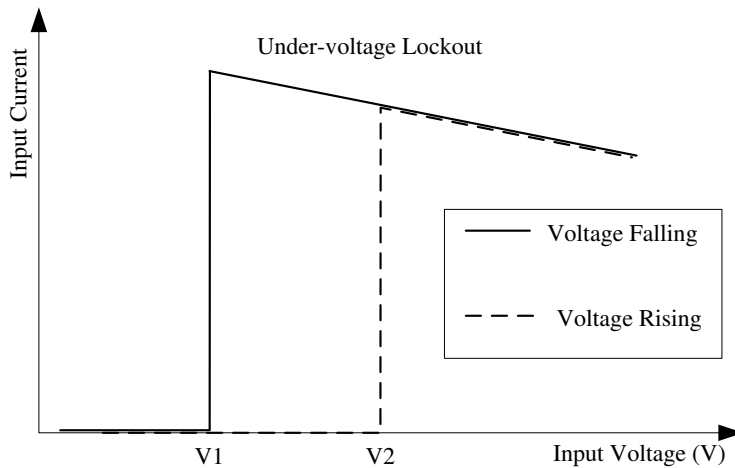


Figure 43. Input under-voltage lockout

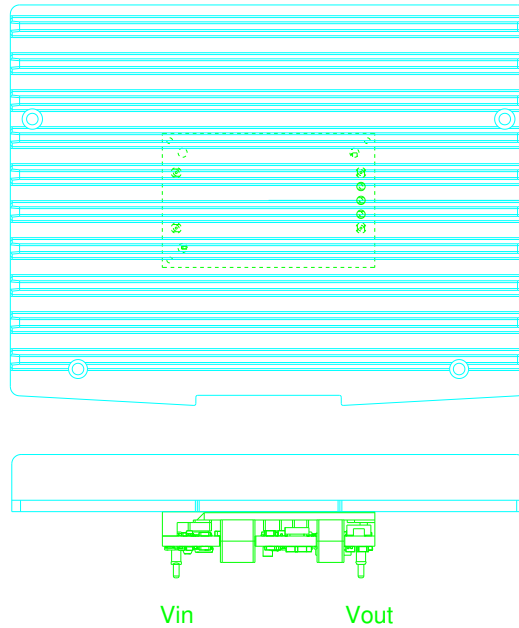
$V_1=12V$

$V_2=13.5V$



**14. THERMAL DERATING CURVE**

Test setup:  $V_{in}$ =24V,48V,110V, OLFM, external HSK Dimension:142mm\*110mm\*16mm



HSK Dimension:142x110x16mm (16 includes baseplate and ribs)

Figure 44. Thermal test plate

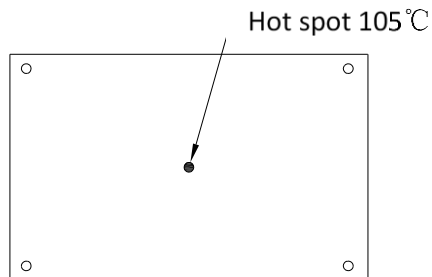


Figure 45. Module top view hot spot

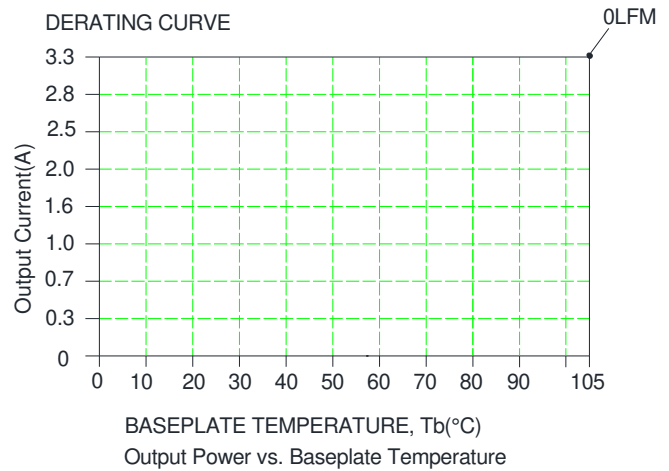


Figure 46. Thermal derating curve

## 15. HOLD UP CAPACITOR

Recommended external hold up circuit (Option 1)

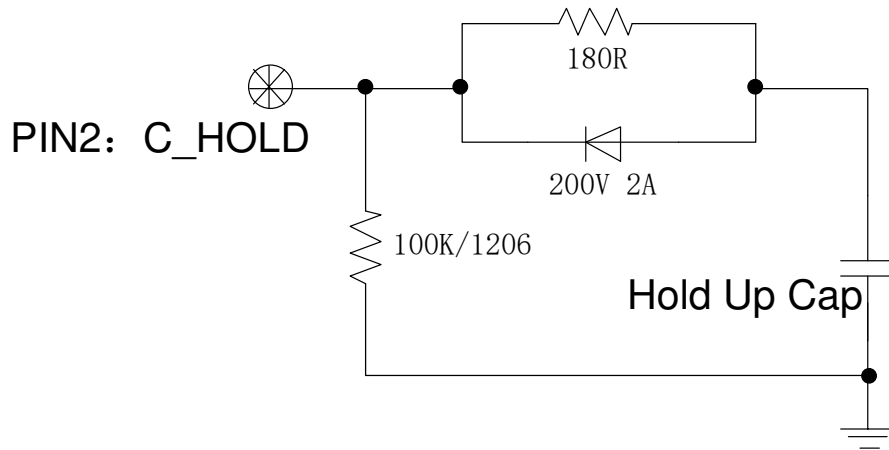


Figure 47. Recommended external hold up circuit (Option 1)

**NOTE:** the rated power of the current-limiting resistor 180R is determined by the rise slope of the input voltage.

PARAMETER	Notes	Symbol	MIN	TYP	MAX	UNITS
Hold up capacitor	working voltage rating should be 200V. Caution: This capacitor is necessary for both normal and hold up operation.	C_HOLD	-	470	-	uF
Hold up voltage	Normal operation	V_HOLD	40	80	154	V
Hold up time	14.4-154V input and all output range.	T_HOLD	12	-	-	ms

**HOLD UP CAPACITOR (CONTINUED)**

Recommended external hold up circuit (Option 2)

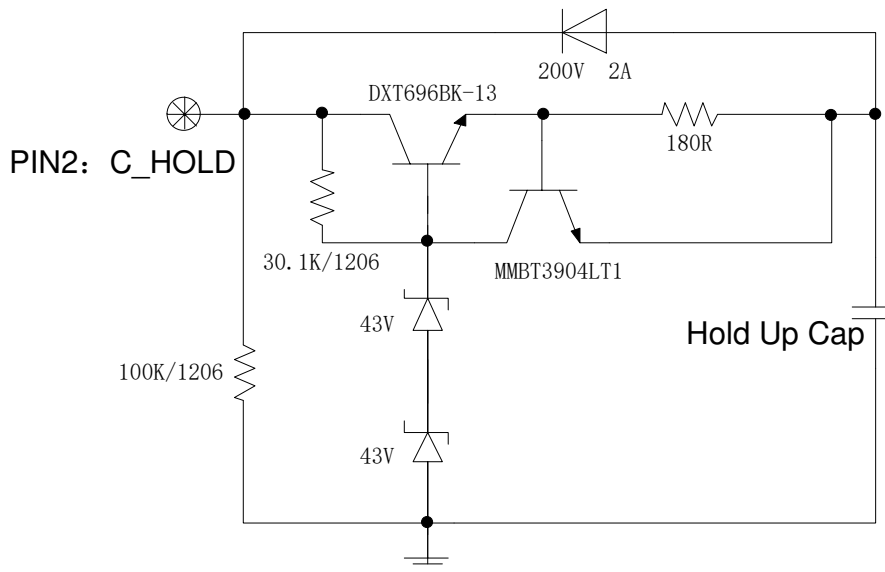


Figure 48. Recommended external hold up circuit (Option 2)

**NOTE:** the rated power of the current-limiting resistor 180R is determined by the rise slope of the input voltage

PARAMETER	Notes	Symbol	MIN	TYP	MAX	UNITS
Hold up capacitor	working voltage rating should be 100V. Caution: This capacitor is necessary for both normal and hold up operation.	C_HOLD	-	470	-	uF
Hold up voltage	Normal operation	V_HOLD	40	80	86	V
Hold up time	14.4-154V input and all output range.	T_HOLD	12	-	-	ms

**16. SAFETY & EMC**

**Safety:**

- 1. Material flammability UL94V-0
- 2. Nemko certification EN 62368-1
- 3. CSA certification CSA/UL 62368-1
- 4. CB certification IEC/EN 62368-1

**EMC:**

- 1. Conductive EMI: EN55032 class A

Compliance to EN55032 class A (both peak and average) with the following inductive and capacitive filter

**Setup:**

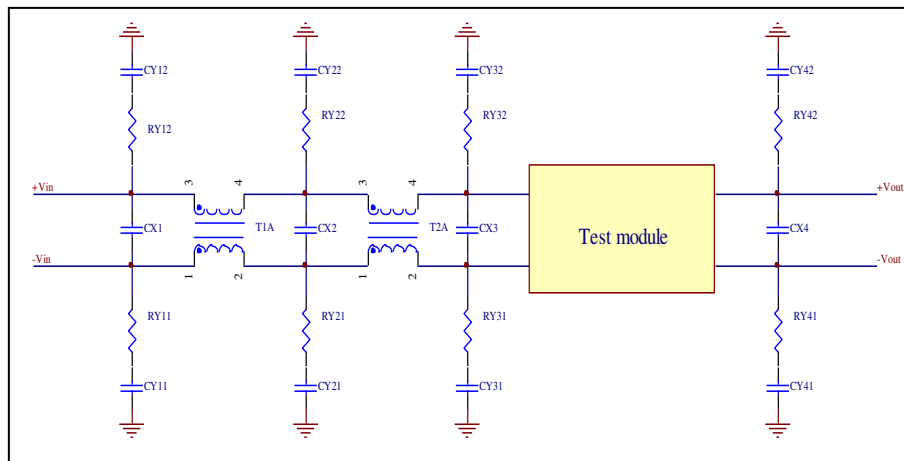


Figure 49.

Item	Designator	Parameter	Vendor	Vendor P/N
1	CX2	2*1µF/305V,X2		
2	CX3	100µF/200V, AL cap		
3	CX4	2*100µF/16V, tantalum capacitor		
4	CY31	4700PF, Y2		
5	CY32	4700PF, Y2		
6	RY31	1206,0R,Resistor		
7	RY32	1206,0R,Resistor		
12	T2A	2mH, common mode inductance		
13	RY11, RY12, CY11, CY12, CX1, T1A, RY21, RY22, CY21, CY22, RY41, RY42, CY41, CY42	NIL		

**SAFETY & EMC (CONTINUED)**

**Positive**

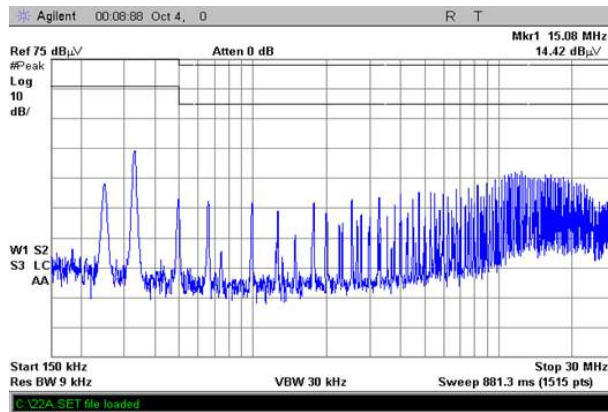


Figure 50.

**Negative**

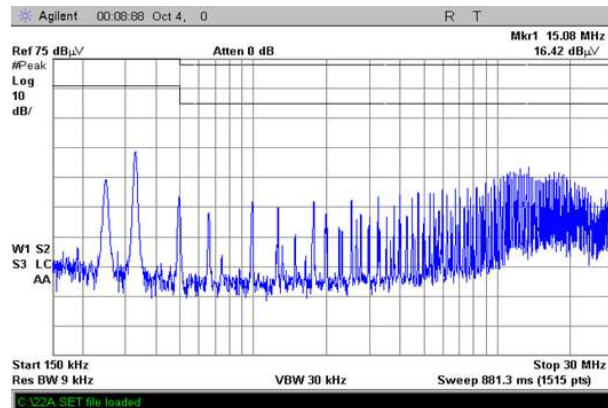


Figure 51.

**17. MECHANICAL DIMENSIONS**

**ORQB-50Y15L/0**

**OUTLINE**

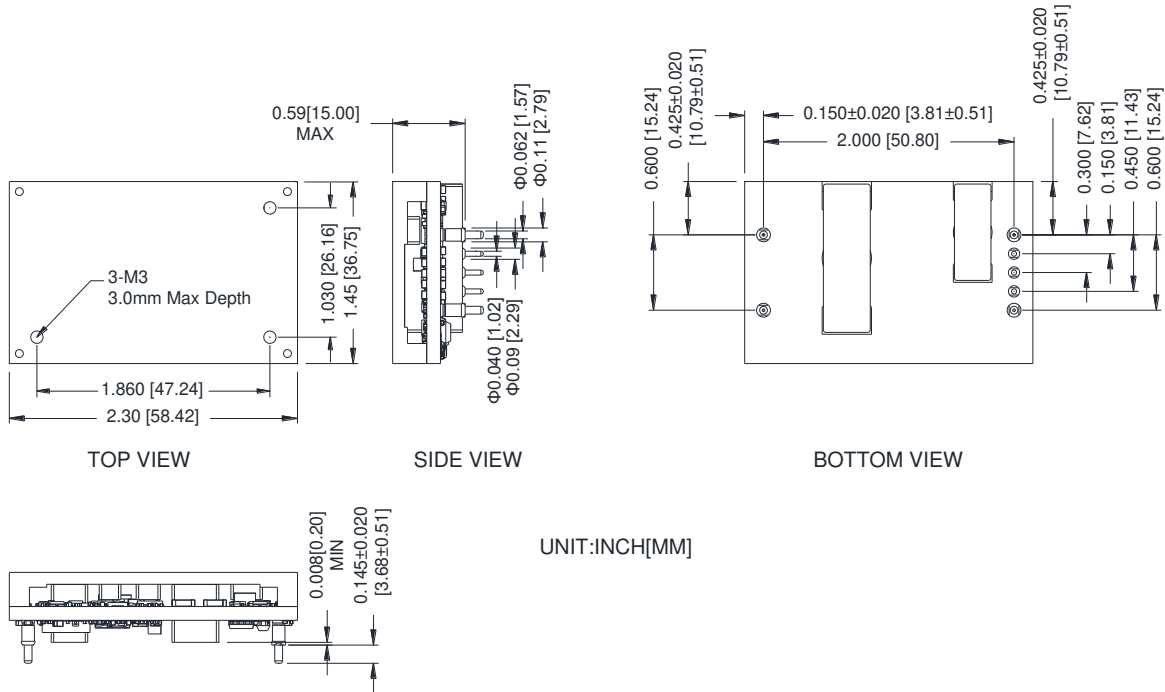


Figure 52. ORQB-50Y15L/0 Outline

**Note:** This module is recommended and compatible with Pb-Free Wave Soldering and must be soldered using a peak solder temperature of no more than 260 °C for less than 5 seconds.

All Pins: Material - Copper Alloy;  
Finish – Tin plated.

**Note:**

- 1) Undimensioned components are shown for visual reference only.
- 2) All dimensions in inches; Tolerances: x.xx +/-0.02 in [0.5 mm]. x.xxx +/-0.010 in [0.25 mm]. Unless otherwise stated.
- 3) In pin definition, "NA" means no pin is assembled, the corresponding function is not available.

## MECHANICAL DIMENSIONS (CONTINUED)

### PIN DEFINITIONS

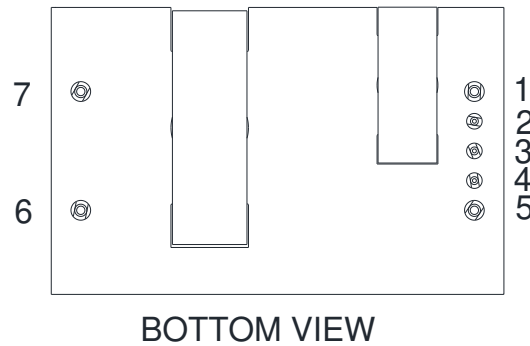


Figure 53. ORQB-50Y15L/0 Pins

PIN	FUNCTION	PIN	FUNCTION
1	Vin (+)	5	Vin (-)
2	C_HOLD	6	Vout (-)
3	ON/OFF	7	Vout (+)
4	V_AUX(5V)		

### RECOMMENDED PAD LAYOUT

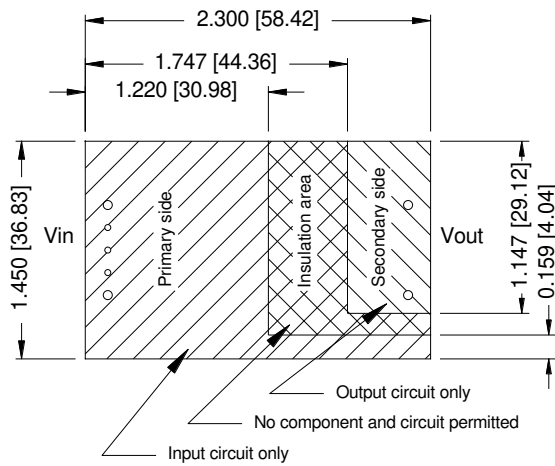


Figure 54. ORQB-50Y15L/0 Recommended pad layout-1

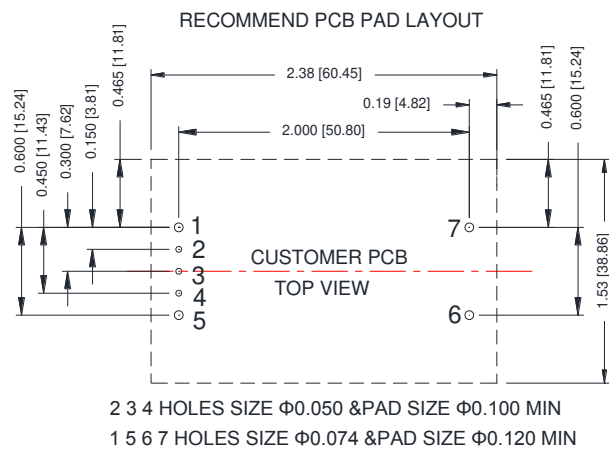


Figure 55. ORQB-50Y15L/0 Recommended pad layout-2

**MECHANICAL DIMENSIONS (CONTINUED)**

**ORQB-50Y15E/F**

**OUTLINE**

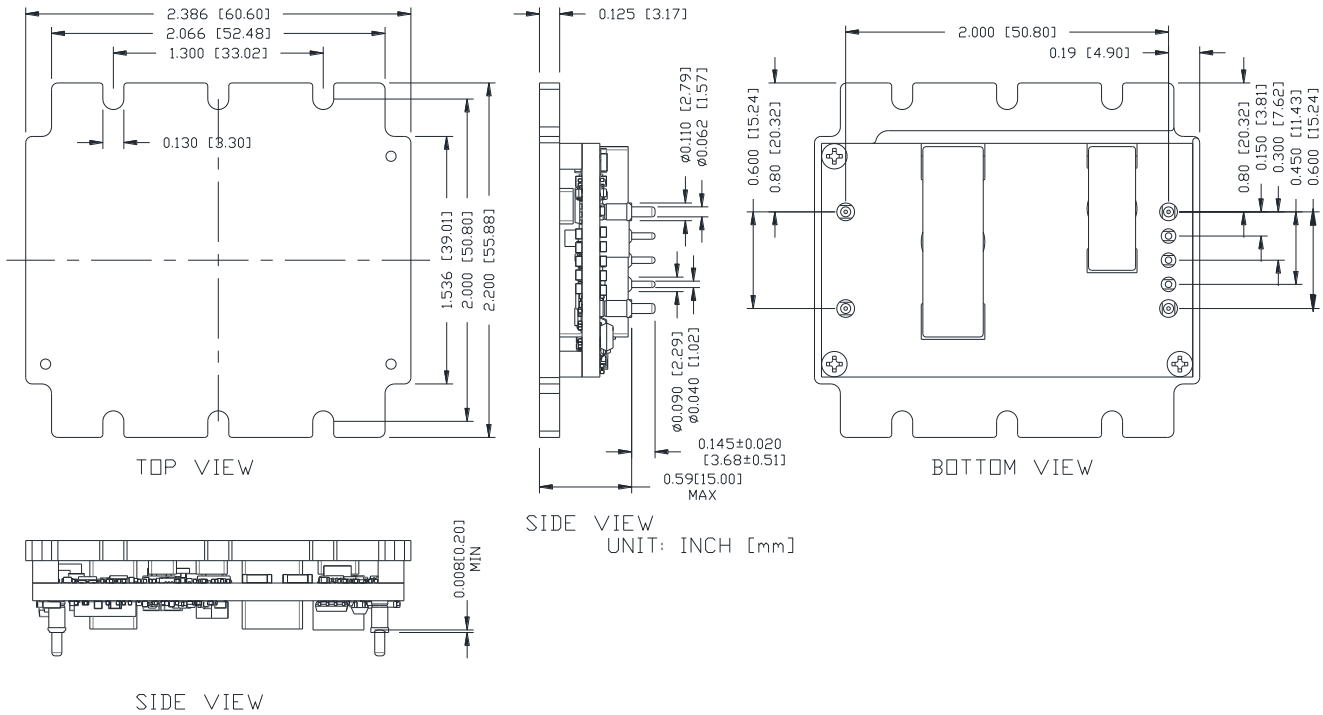


Figure 56. ORQB-50Y15E/F Outline

**Note:** This module is recommended and compatible with Pb-Free Wave Soldering and must be soldered using a peak solder temperature of no more than 260 °C for less than 5 seconds.

All Pins: Material – Copper Alloy;  
Finish – Tin plated.

**Note:**

- 1) Undimensioned components are shown for visual reference only.
- 2) All dimensions in inches; Tolerances: x.xx +/-0.02 in [0.51 mm]. x.xxx +/-0.010 in [0.25 mm]. Unless otherwise stated.
- 3) In pin definition, "NA" means no pin is assembled, the corresponding function is not available.



**MECHANICAL DIMENSIONS (CONTINUED)**

**PIN DEFINITIONS**

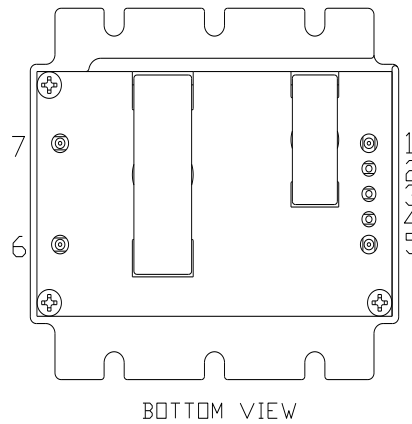


Figure 57. 0RQB-50Y15E/F Pins

PIN	FUNCTION	PIN	FUNCTION
1	Vin (+)	5	Vin (-)
2	C_HOLD	6	Vout (-)
3	ON/OFF	7	Vout (+)
4	V_AUX(5V)		

**RECOMMENDED PAD LAYOUT**

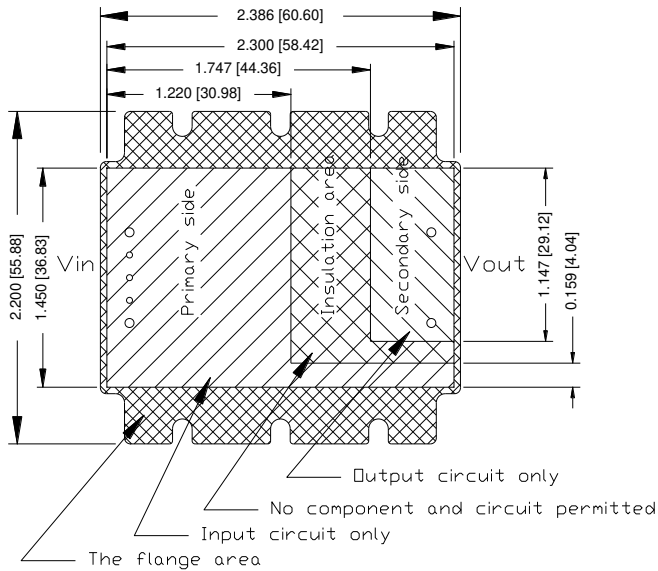


Figure 58. 0RQB-50Y15E/F Recommended pad layout-1

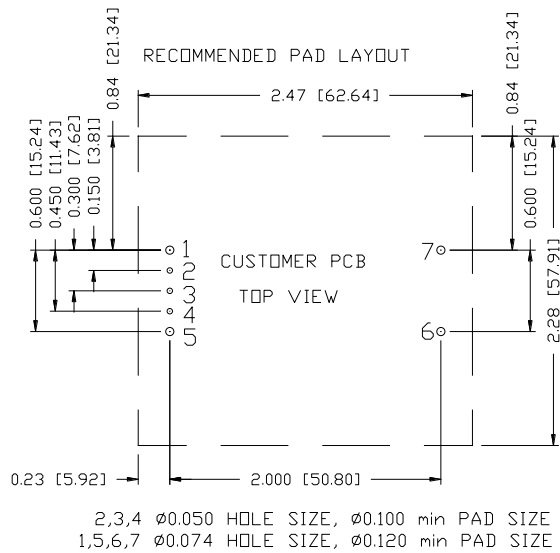


Figure 59. 0RQB-50Y15E/F Recommended pad layout-2



**18. REVISION HISTORY**

DATE	REVISION	CHANGES DETAIL	APPROVAL
2018-11-02	AA	First release	S. Wang
2019-10-24	AB	Add feature reinforced isolation	S. Wang
2020-01-15	AC	Add safety approved to IEC/EN 62368-1 and CSA/UL 62368-1. Update altitude to 5000m	F.Tao
2020-08-04	AD	Add 0RQB-50Y050/E/F and module photo.	H.Yu

For more information on these products consult: [tech.support@psbel.com](mailto:tech.support@psbel.com)

**NUCLEAR AND MEDICAL APPLICATIONS** - Products are not designed or intended for use as critical components in life support systems, equipment used in hazardous environments, or nuclear control systems.

**TECHNICAL REVISIONS** - The appearance of products, including safety agency certifications pictured on labels, may change depending on the date manufactured. Specifications are subject to change without notice.