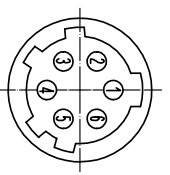
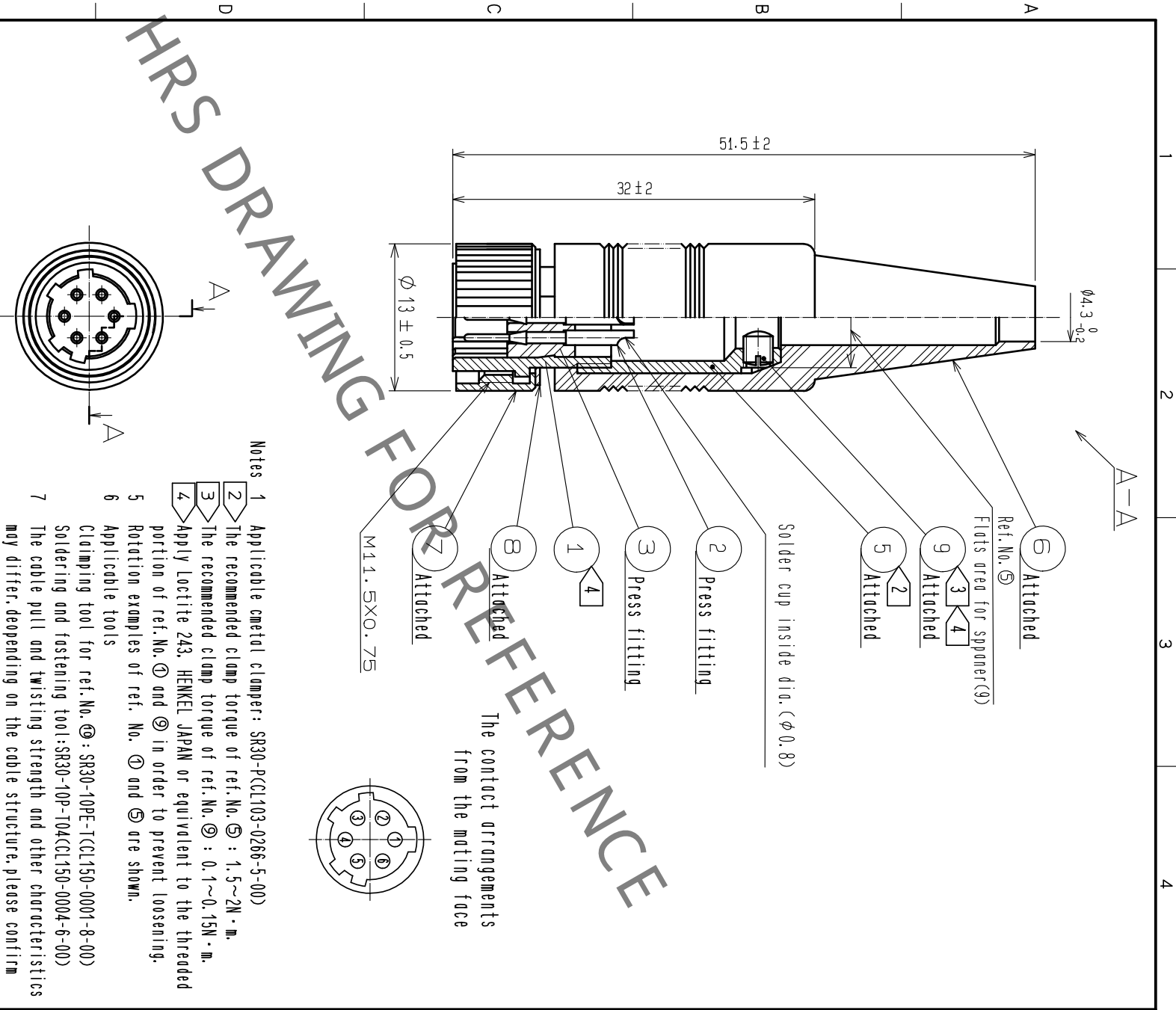


In case of consideration for using Automotive equipment / device which demand high reliability, kindly contact our sales window correspondents.



The contact arrangements from the mating face

- Notes
- 1 Applicable metal clomper: SR30-P(CI103-0266-5-00)
  - 2 The recommended clamp torque of ref. No. ⑤ : 1.5~2N · m.
  - 3 The recommended clamp torque of ref. No. ⑥ : 0.1~0.15N · m.
  - 4 Apply Loctite 243, HENKEL JAPAN or equivalent to the threaded portion of ref. No. ① and ② in order to prevent loosening.
  - 5 Rotation examples of ref. No. ① and ② are shown.
  - 6 Applicable tools  
Clamping tool for ref. No. ⑥: SR30-10PE-1(CI150-0001-8-00)  
Soldering and fastening tool: SR30-10P-T04(CI150-0004-6-00)
  - 7 The cable pull and twisting strength and other characteristics may differ, depending on the cable structure, please confirm before the use. Also, please confirm the workability in advance as it may be tight when passing the cable through the part No. ⑥ bushing.

5	Brass	Nickel plating	9	Steel	Nickel plating	JIS B 1117 H2.6X0.45X3 Slotted set screws		
3	Polyacetel		8	Brass	Chrome plating			
2	Brass	Surface:Gold plating 0.2µm min. Under :Nickel plating 3µm min	7	Brass	Chrome plating			
1	Zinc alloy	Nickel plating	6	Chloroprene rubber	(Black)			
MATERIAL		FINISH		REMARKS				
UNITS	mm	SCALE	2 : 1	COUNT	DESCRIPTION OF REVISIONS	DESIGNED	CHECKED	DATE
APPROVED : TP. KOMATSU		DRAWING NO.		EDC-005938-32-00				
CHECKED : HY. KOBAYASHI		PART NO.		SR30-10PE-6P(32)				
DESIGNED : HY. KISHI		CODE NO.		CL0103-0258-7-32				
DRAWN : KR. SUZUKI								