

THIS DRAWING IS UNPUBLISHED. RELEASED FOR PUBLICATION
 © COPYRIGHT BY TYCO ELECTRONICS CORPORATION. ALL RIGHTS RESERVED.

LOC		DIST		REVISIONS			
P	LTR	DESCRIPTION		DATE	DWN	APVD	
GP	00	E		REVISED PER ECO-08-007327	05SEP08	BM WM	

RECEPTACLE TERMINAL
 QUANTITY 50

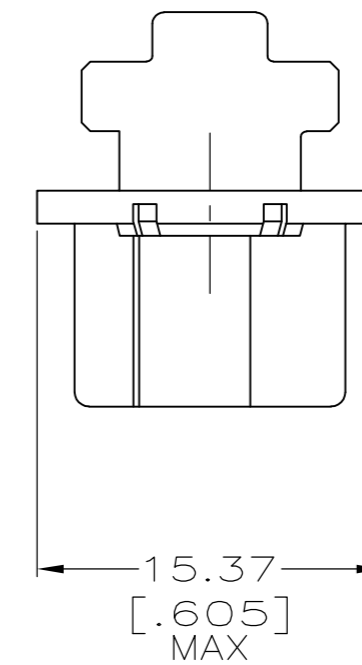
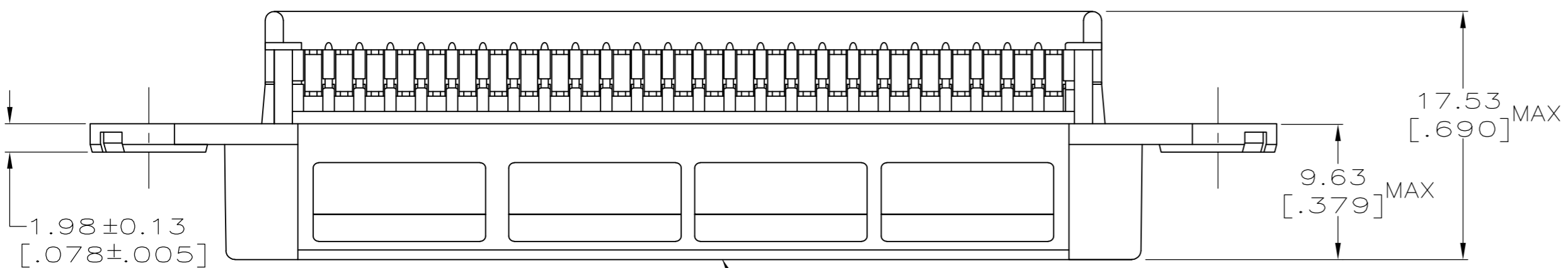
BLUE COLOR DOT
 LOCATED IN CENTER

$\phi 3.18 \pm 0.13$
 $[.125 \pm .005]$
 2 HOLES

74.83 ± 0.36
 $[2.946 \pm .014]$

83.31
 $[3.280]$

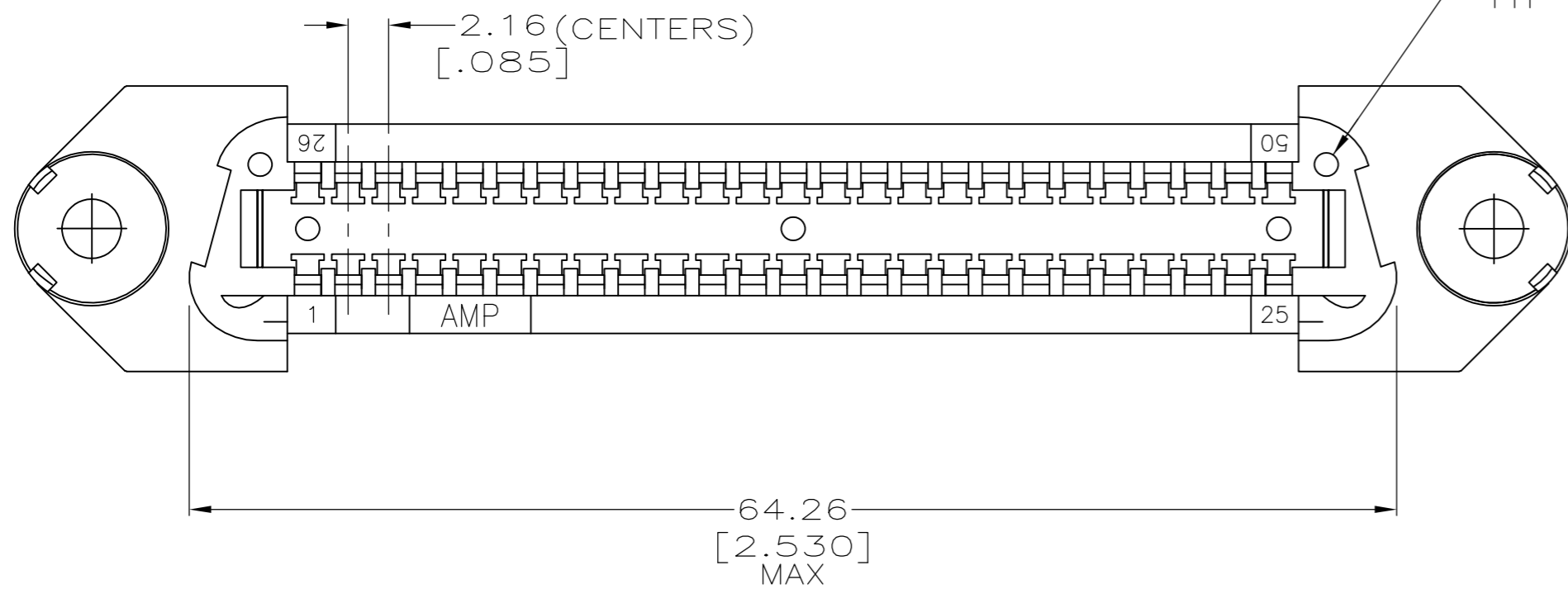
1. MATERIAL: HOUSING - POLYPHENYLENE OXIDE, BLACK. TERMINAL - HIGH STRENGTH COPPER ALLOY PLATED WITH $0.76\mu\text{m}$ [.000030] MIN GOLD OR GOLD FLASH OVER PALLADIUM NICKEL PLATE, $0.76\mu\text{m}$ [.000030] MIN TOTAL ON MATING SURFACE, $1.27\mu\text{m}$ [.000050] MIN NICKEL UNDERPLATE ON ENTIRE CONTACT.
2. THE CONTACT SURFACES OF THE TERMINALS ARE COATED WITH LUBRICANT.
3. WIRE SIZE: 26 AWG SOLID OR 24 AWG 7 STRANDS OF COPPER CONDUCTORS. MAXIMUM INSULATION DIAMETER OF 1.14 [.045] IS ACCEPTABLE FOR MOST APPLICATIONS.



RECEPTACLE HOUSING

OPTIONAL CORE FEATURE
 TYP

2.16 (CENTERS)
 $[.085]$



554342-1
 PART NUMBER

THIS DRAWING IS A CONTROLLED DOCUMENT.		DWN DL DRUMMOND 22AUG2002	Tyco Electronics Corporation Harrisburg, PA 17105-3608	
DIMENSIONS: mm [INCHES]		CHK DL DRUMMOND 22AUG2002	NAME	
TOLERANCES UNLESS OTHERWISE SPECIFIED:		APVD RP MCCRAW 26AUG2002	EMI RECEPTACLE ASSEMBLY, 50 POSITION, SCREW LOCK, B-SLOT, WITH 3.175 [.125] DIAMETER HOLES, CHAMP	
0 PLC ± -		PRODUCT SPEC	SIZE A2	CAGE CODE 00779
1 PLC ± -		APPLICATION SPEC	DRAWING NO C=554342	RESTRICTED TO
2 PLC ± -		WEIGHT -	SCALE 3:1	SHEET 1 OF 1
3 PLC ± -		CUSTOMER DRAWING	REV E	
4 PLC ± -				
ANGLES ± -				
FINISH				