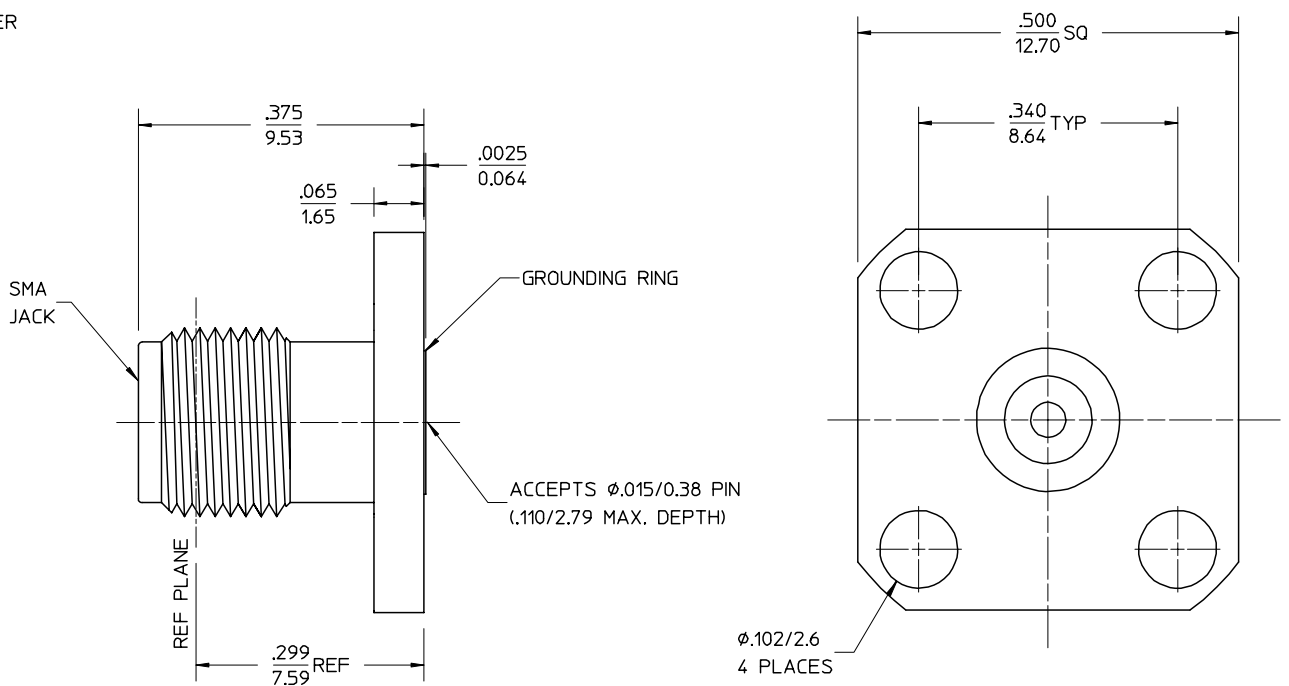


MATERIALS AND FINISHES:  
 BODY STAINLESS STEEL  
 PASSIVATED  
  
 CENTER CONTACT BERYLLIUM COPPER  
 PLATED GOLD  
  
 INSULATOR TEFLON



PART # 73251-0820

MIL-STD-348, FIGURE 310-2	INTERFACE
PS-89675-2910	ELECTRO/MECH PERFORMANCE
SPECIFICATION	DESCRIPTION

CHG: NEW RELEASE	EC NO. URF-0233	DESCRIPTION	UNLESS OTHERWISE SPECIFIED DIMS ARE INCHES AND ANGLES ARE DEGREES. 1. √ 63 ALL OVER. 2. NO CHATTER OR NON-UNIFORM SURFACE FINISH ALLOWED. 3. PARTS TO BE FREE OF BURRS & SHARP EDGES .005 MAX BREAK. 4. EXTERNAL THREADS TO BE ROLLED OR SINGLE POINT. 5. DIAMETERS TO BE CONCENTRIC WITHIN .003 TIR.
	DRWN: TEF 06/21/99		
	CHK: DHG 06/21/99		
	APPR: GMH 06/21/99		

UNLESS OTHERWISE SPECIFIED DIMS ARE INCHES AND ANGLES ARE DEGREES.  
 1. √ 63 ALL OVER.  
 2. NO CHATTER OR NON-UNIFORM SURFACE FINISH ALLOWED.  
 3. PARTS TO BE FREE OF BURRS & SHARP EDGES .005 MAX BREAK.  
 4. EXTERNAL THREADS TO BE ROLLED OR SINGLE POINT.  
 5. DIAMETERS TO BE CONCENTRIC WITHIN .003 TIR.

QUALITY SYMBOLS
MAJOR
CRITICAL

GENERAL TOLERANCES: (UNLESS SPECIFIED)	SCALE	DESIGN UNITS
4 PLACES ± .0005	mm INCH	mm INCH
3 PLACES ± .005		
2 PLACES ± .01		
1 PLACE ± .1		
ANGULAR: ±2°		
DRAFT WHERE APPLICABLE MUST REMAIN WITHIN DIMENSIONS		

DRAWN BY & DATE	EDC 02/19/99
CHECKED BY & DATE	DHG 02/19/99
APPROVED BY & DATE	GMH 02/19/99
CAD FILENAME	

THIRD ANGLE PROJECTION	DIMENSIONS: mm INCH mm ONLY	1	A
TITLE: SMA JACK, RECEPTACLE, 4 HOLE FLANGE MOUNT, ACCEPTS .015 DIA PIN SMA-JR/F		SHT	REV
MATERIAL NO. SEE NOTE	DRAWING NO. SD-73251-082	REVISE ON CAD ONLY	
MOLEX MOLEX INCORPORATED		SHEET NO. 1 of 1	
THIS DRAWING CONTAINS INFORMATION THAT IS PROPRIETARY TO MOLEX INCORPORATED AND SHOULD NOT BE USED WITHOUT WRITTEN PERMISSION.		SIZE B	