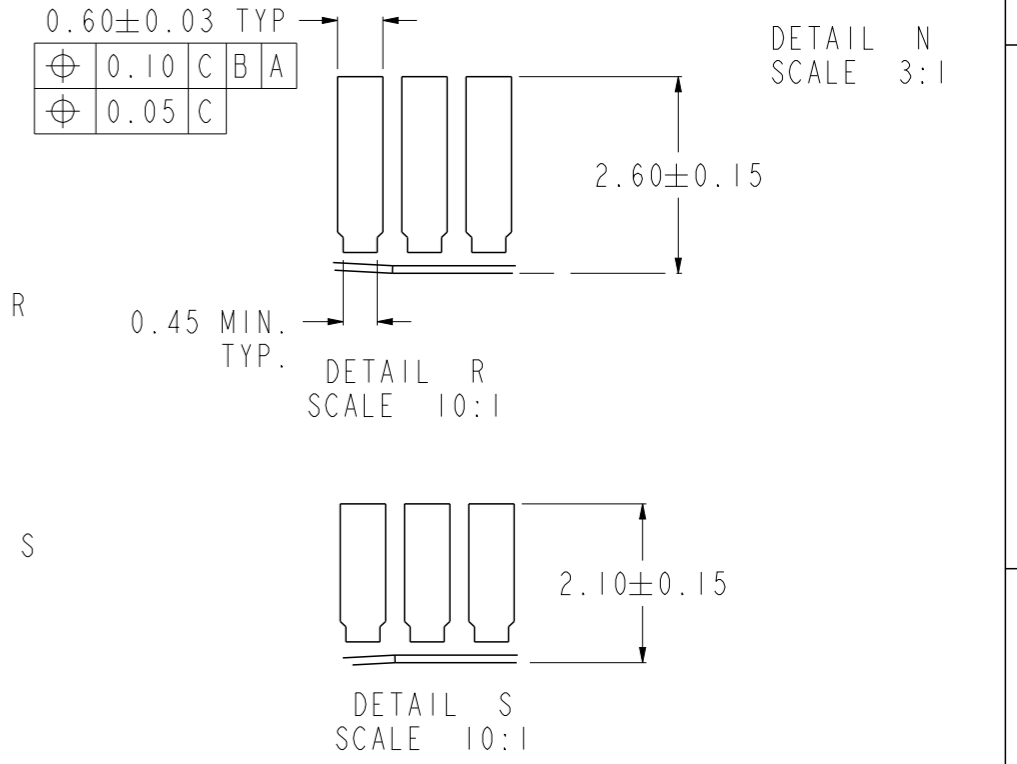
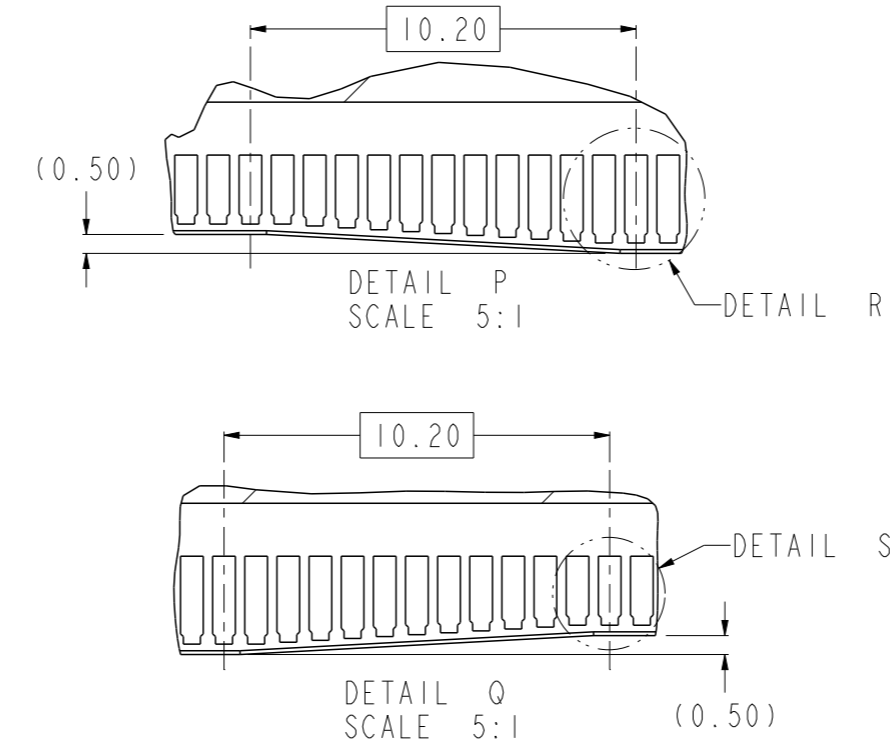
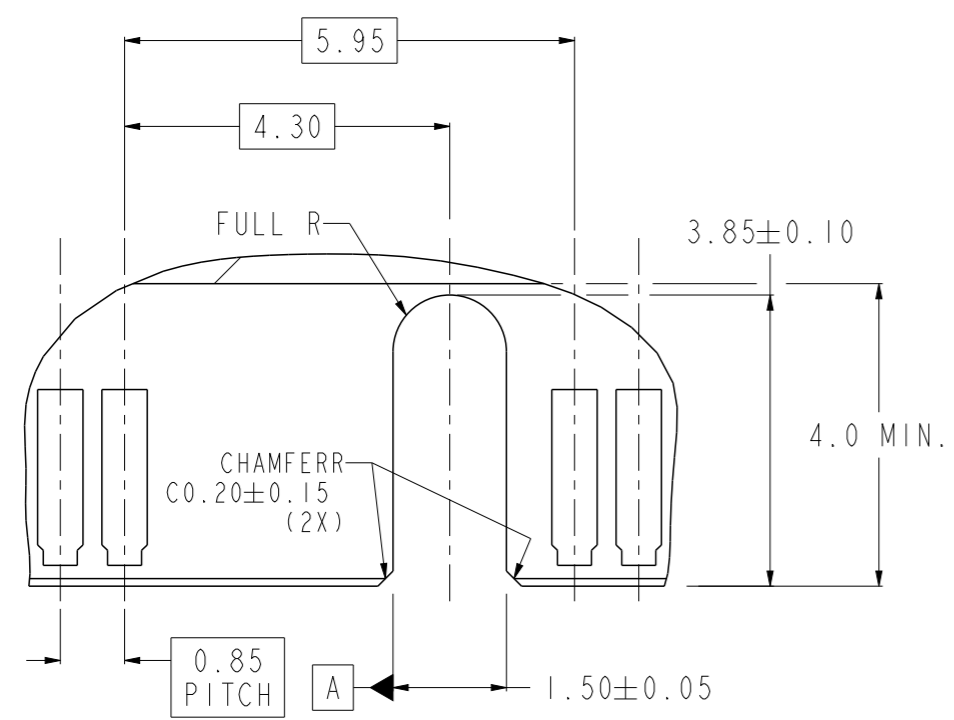
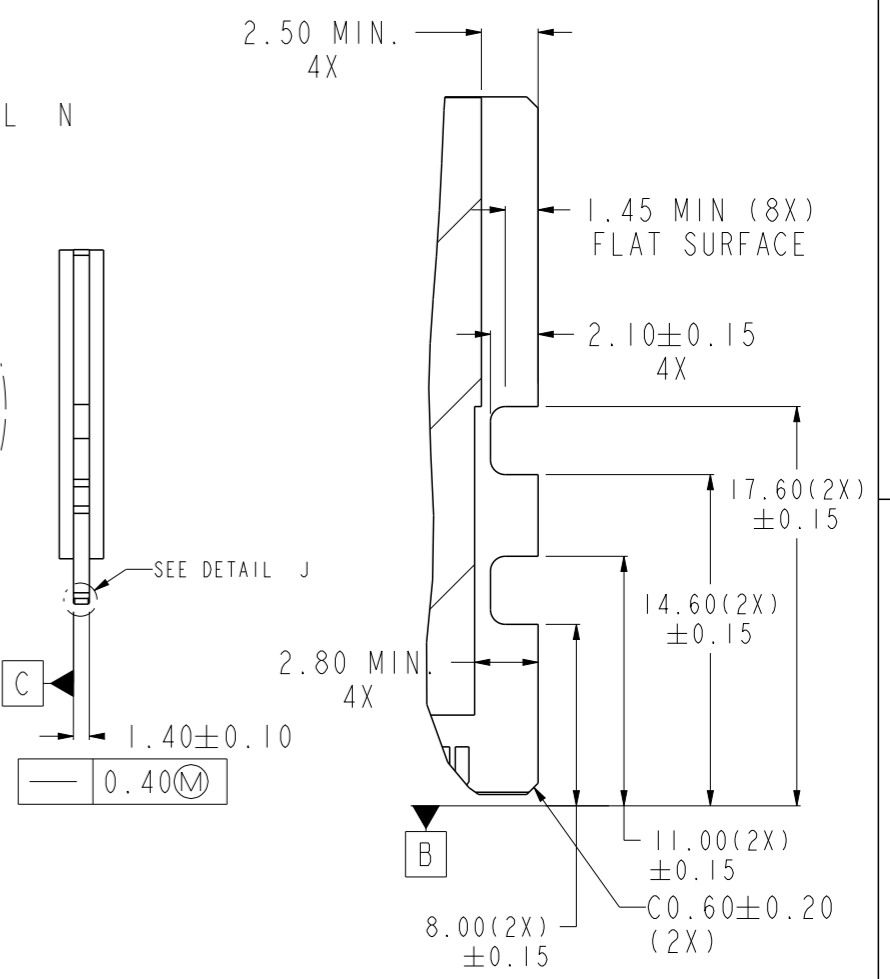
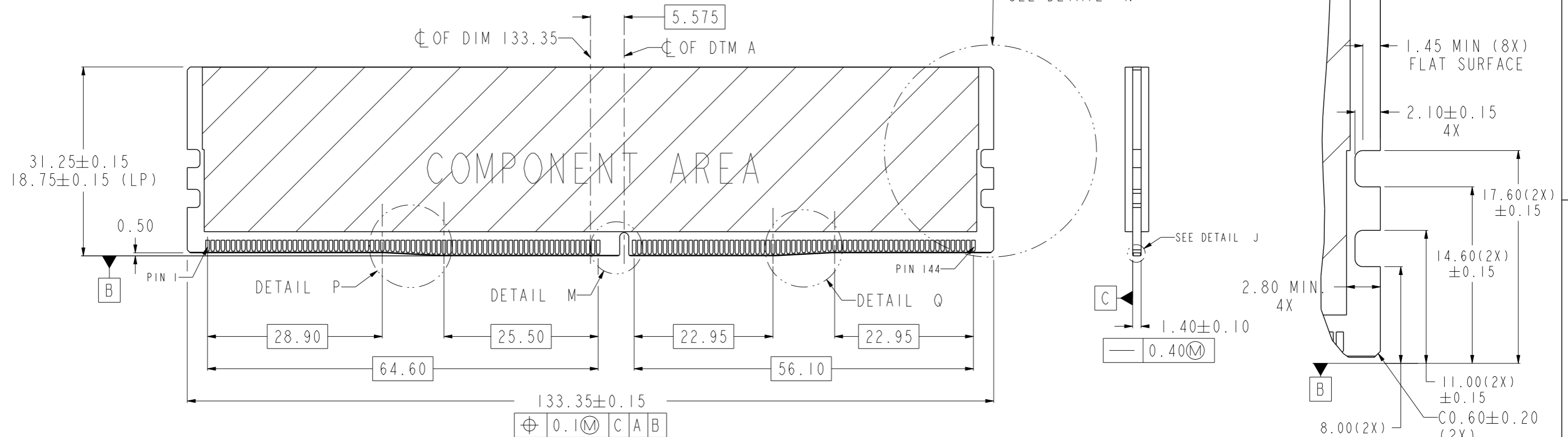
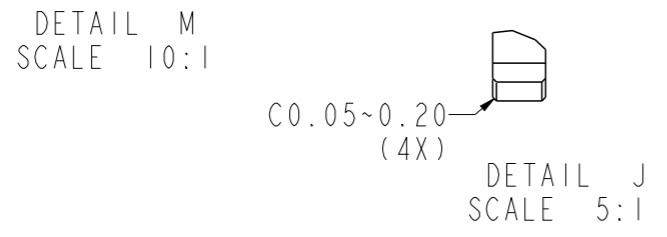


spec ref	-	dr	Nickor Zuo	2019/07/08	projection	mm	size	A3	scale	1:1
tolerance std	ISO 406 ISO 1101	eng	Girder Liang	2019/08/14			ecn no	-	rel level	Released
TOLERANCES UNLESS OTHERWISE SPECIFIED		chr	-	-			product family	-	rel level	Released
surface	linear	0.X	±0.30	Amphenol FCi	DDR4 288 PIN DIMM CONNECTOR		dwg no 10152217	rev		A
		0.XX	±0.20		SMT TERMINATION					
		0.XXX	±0.10							
ISO 1302	angular	0°	±2°	cat. no.	-	Product - Customer Drw	sheet 1 of 4			

DDR4 MODULE
MORE INFORMATION REFER TO JEDEC MO-309



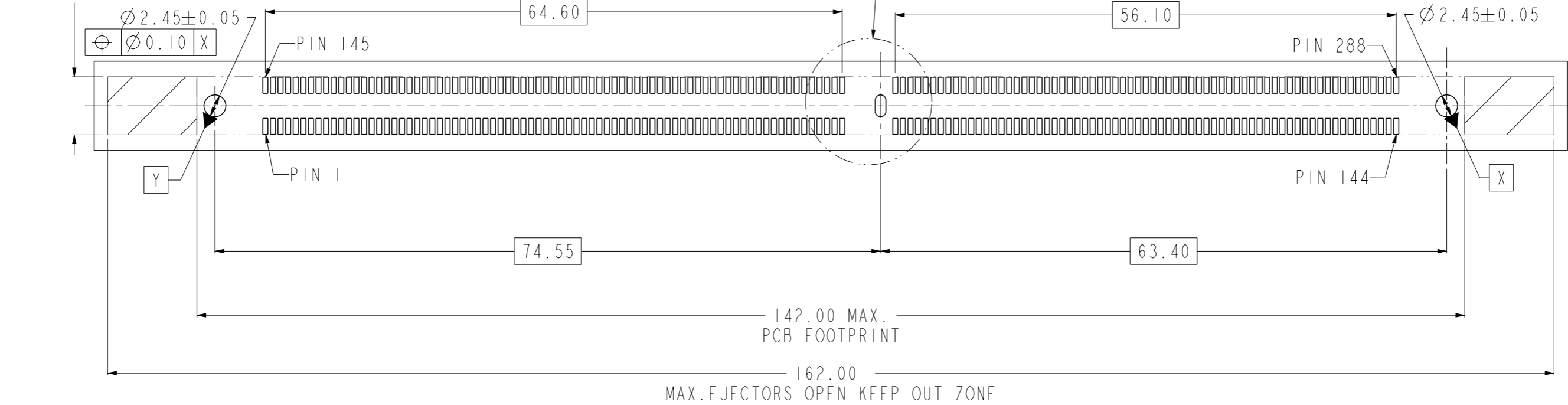
Amphenol FCI
© 2016 AFCI



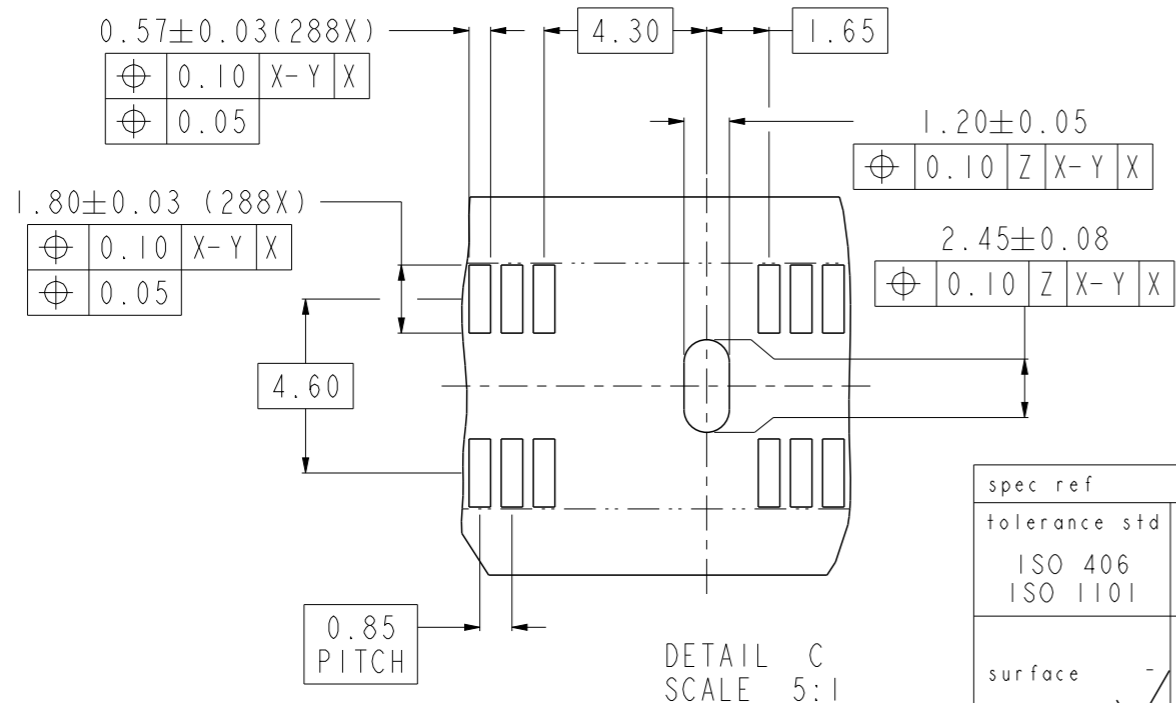
spec ref	-	dr	Nickor Zuo	2019/07/08	projection	mm	size	A3	scale	3:2	
tolerance std	ISO 406 ISO 1101	eng	Girder Liang	2019/08/14			ecn no	-	rel level	Released	
TOLERANCES UNLESS OTHERWISE SPECIFIED		chr	-	apppr							Nickor Zuo
surface	linear	0.X	± 0.30		DDR4 288 PIN DIMM CONNECTOR			dwg no	10152217	rev	A
		0.XX	± 0.20		SMT TERMINATION						
		0.XXX	± 0.10		cat. no.	-	Product - Customer Drw				
	angular	0°	$\pm 2^\circ$								

RECOMMENDED PCB LAYOUT
MORE INFORMATION REFER TO JEDEC SO-017

6.50 MAX.
KEEP OUT ZONE



THICKNESS
1.6~3.2mm



ADDITIONAL NOTES:

1. RECOMMENDED STENCIL THICKNESS IS NOT LESS THAN 0.15mm

DETAIL C
SCALE 5:1

spec ref	-	dr	Nickor Zuo	2019/07/08	projection	mm	size	A3	scale	1:1		
tolerance std	ISO 406 ISO 1101	eng	Girder Liang	2019/08/14			ecn no	-	rel level	Released		
surface	ISO 1302	chr	-	appr			Nickor Zuo	2019/08/14	product family	-		
		linear	0.X	±0.30			DDR4 288 PIN DIMM CONNECTOR SMT TERMINATION		dwg no	10152217	rev	A
		angular	0°	±2°			cat. no.	-	Product - Customer Drw	sheet 3 of 4		

PRODUCT PART NUMBER

10152217-□□□□□□□□

ADDITIONAL REQUIREMENTS

0: DEFAULT

HOLD DOWNS CONFIGURATIONS

1: 3 FORKLOCKS, DIM "Y"=2.50±0.25
3: 3 SOLDER TABS, DIM"Y"=2.00±0.25

MYLAR AND PACKAGE

0. WITH MYLAR, HARD TRAY PACKAGE
1. WITHOUT MYLAR, HARD TRAY PACKAGE

HOUSING COLOR

0: NATURAL
1: BLACK
2: BLUE

CONTACT AREA PLATING

CODE	CONTACT AREA
11LF	15u" MIN.GOLD
13LF	30u" MIN.GOLD

EJECTOR TYPE

CODE	COLOR
J	NATURAL
K	BLACK
B	BLUE

NOTES:

- MATERIALS:
HOUSING: HIGH PERFORMANCE RESINS, GLASS FILBER FILLED.
EJECTOR: HIGH PERFORMANCE RESINS, GLASS FILBER FILLED.
TERMINAL: COPPER ALLOY
SOLDER TAB: COPPER ALLOY
- STENCIL THICKNESS IS NOT LESS THAN 0.15mm.
- DATE CODE "MMDDYYL", MMDDYY IS ASSEMBLY DATE, L IS FCI PRODUCTION LINE.
- SPECIFICATION:
PRODUCTION SPECIFICATION: FCI GS-12-1092.
PACKAGE SPECIFICATION: FCI GS-14-2267.
APPLICATION SPECIFICATION: FCI GS-20-0353.
- LEAD FREE PRODUCT MEETS EUROPEAN UNION DIRECTIVES AND OTHER COUNTRY REGULATIONS AS DESCRIBED IN FCI GS-22-008.
- THIS PRODUCT WILL WITHSTAND EXPOSURE TO 260°C PEAK TEMPERATURE FOR 10 SECONDS IN REFLOW SOLDERING APPLICATION.



OPTIONAL Mylar

spec ref	-	dr	Nickor Zuo	2019/07/08	projection	mm	size	A3	scale	1:1
tolerance std	ISO 406 ISO 1101	eng	Girder Liang	2019/08/14			ecn no		-	
TOLERANCES UNLESS OTHERWISE SPECIFIED		chr	-	-			rel level		Released	
surface	linear	0.X	±0.30		product family DDR4 288 PIN DIMM CONNECTOR SMT TERMINATION	dwg no 10152217	rev		A	
		0.XX	±0.20				cat. no.		Product - Customer Drw	
ISO 1302	angular	0°	±2°							

Amphenol FCI

© 2016 AFCI