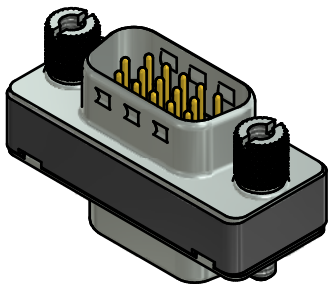


(b) NOTES:

1. METALSHIELDS: STEEL; min. 315µm TIN over 40-80µm NICKEL
2. INSULATORS: PBT GF UL 94 V-0; BLACK
3. CONTACTS: COPPER ALLOY; PLATING (SEE PART NO):
 - PLEASE ADD A for GOLD FLASH over NICKEL (PREFERRED TYPE)
 - PLEASE ADD B for 20µm HARD GOLD over min. 50µm NICKEL
 - PLEASE ADD C for 30µm HARD GOLD over min. 50µm NICKEL
4. THREADED INSERTS: COPPER ALLOY; min 200µm TIN over 80µm NICKEL
5. JACK SCREWS: COPPER ALLOY; NICKEL PLATED
6. CAPACITANCE: 830pF ±20%
7. DIELECTRIC WITHSTANDING VOLTAGE: 300 VDC
8. MAXIMUM TORQUE VALUE FOR THREAD : 6 in.LB
9. CONNECTOR IS PART MARKED: 243□11800X CONEC ABC (see note 4)



Directive 2002/95/EC RoHS compliant

THIS DRAWING MAY NOT BE COPIED OR REPRODUCED IN ANY WAY, AND MAY NOT BE PASSED ON TO A THIRD PARTY WITHOUT WRITTEN PERMISSION. OWNERSHIP AND COPYRIGHT OF CONEC GmbH

DO NOT ALTER CAD DRAWING BY HAND

tolerance				dim. in mm	
		date	name	drawn	17.07.2014
				appd.	17.07.2014
				norm	
				d-old	24K1IP7A
5 x b	Ä5283	17.07.2014	Blu	CONEC ®	
a	Original				
rev.	description	date	name		

scale:	2:1 (5:1)	
material:	see notes	
title:	D-SUB HD C-FILTER ADAPTER 15pos. SOCKET / PLUG	
dwg no:	(b) 24K1A1540	DIN-A3 sh: 1
part no:	(b) 243□11800X (see note 3)	