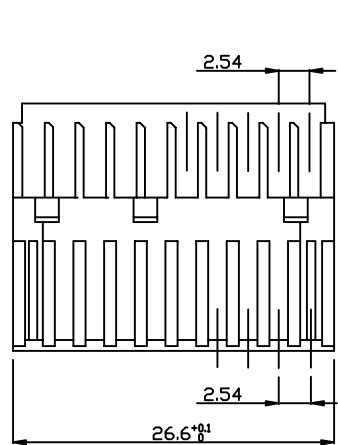
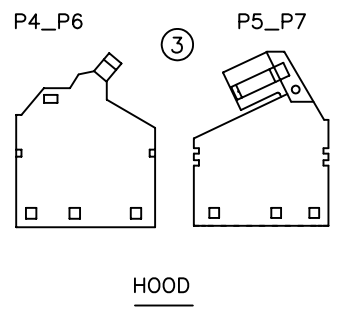
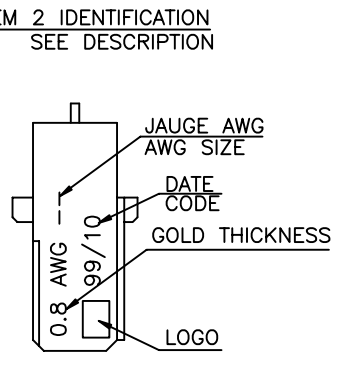
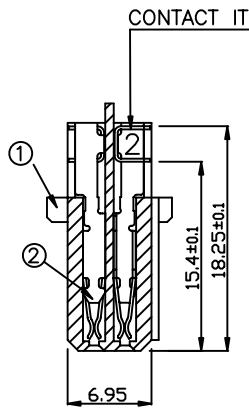


Tous droits strictement reserves. Reproduction ou communication a des tiers interdite sous quelque forme que ce soit sans autorisation écrite du propriétaire. Propriete de c FCI. Droits de reproduction FCI.

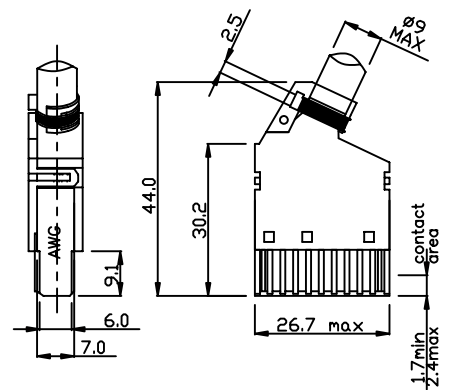
All rights strictly reserved. Reproduction or issue to third parties in any form whatever is not permitted without written authority from the proprietor. Property of FCI. Copyright FCI.



CONNECTOR



HOOD



OVERALL VIEW

NOTES:
 1.MATERIAL:
 HOOD:THERMALPLATIC UL94V0;
 BODY:GLASSFIBER REINFORCED THERMALPLASTIC UL94V0;
 CONTACTS:PHOSPHOR BRONZE;
 PLATING:GOLD OVER 2um NICKEL ON WORKING AREA.
 2.MECHANICAL REQUIREMENT:
 INSERTION FORCE(EACH CONTACT):<=1N;
 WITHDRAWAL FORCE (EACH CONTACT):<=0.19N;
 DURABILITY:>=100CYCLES.
 3.ELECTRICAL REQUIREMENT:
 INITIAL CONTACT RESISTANCE:<=20MILLIOHM;
 INSULATION RESISTANCE AFTER TEST:>=10000MEGAOHM;
 WITHSTANDING VOLTAGE:>1000Vrms;
 OPERATING VOLTAGE:250VAC;
 OPERATING CURRENT:1.3A AT 70 DEGREE.
 4.IF LEAD FREE P/N, GS-14-920 SHOULD BE APPLIED.
 5.THIS PRODUCT MEETS EUROPEAN UNION DIRECTIVES AND OTHER COUNTRY REGULATIONS AS DESCRIBED IN GS-22-008.

PART NUMBER	PLATING CODE & GOLD THICKNESS		E9 Au:1u		Z4 OR Z6 Au:0.8u	
			1AB000490002(LF)			
			BPBS1B20D0CZ6(LF)			
			1AB0004900031(LF)			
			BPBS1B20D2C1Z6(LF)			
			1AB0004900008(LF)			
			BPBS1B20D3C1Z6(LF)			

ITEM	CATALOGUE NO.	QTY.	FOR COMPLETE ASS'Y	DESCRIPTION	DRAWING
5	HPTE1597	-	-	PLASTIC CABLE CLAMP	-
	HPTE1586	-	-	CABLE CLAMP Ø7.2	VAW19067
4	HPTE1585/A	-	-	CABLE CLAMP Ø12.5	VAW19066
	HPTE1585	-	-	CROSSHEEDED SCREW OR SLOTTED SCREW	VAW21269 VAW19065
3	BPBS1B20P7	-	1	1/2 CABLE HOOD FOR AWG30	
	BPBS1B20P5	-	-	1/2 CABLE HOOD FOR AWG24 AWG26	VRW11176
	BPBS1B20P6	-	1	1/2 CABLE HOOD FOR AWG30	
	BPBS1B20P4	-	-	1/2 CABLE HOOD FOR AWG24 AWG26	VRW11177
2	BPCD3P2--(LF)	-	-	CONTACT FOR AWG24(IDENTIFICATION=3)	
	BPCD2P2--(LF)	-	-	CONTACT FOR AWG26(IDENTIFICATION=2)	VTW10916
	BPCD0P2--(LF)	-	-	CONTACT FOR AWG30(IDENTIFICATION=0)	
1	BPBS1B20P9	-	1	BODY FOR AWG30(COLOR=WHITE)	
	BPBS1B20P8	-	-	BODY FOR AWG26(COLOR=BLACK)	VRW11172
	BPBS1B20P1	-	-	BODY FOR AWG24(COLOR=GREY)	

mat'l. code				tolerances unless otherwise specified				CUSTOMER COPY		 www.fciconnect.com			
ltr	ecn no	dr	date	linear	.X ± 0.5		projection			title			
A	F03021	DLE	01/29/03		.XX ± 0.30					HOOD AND CABLE CONNECTOR ASSY 2X10			
B	F04-0107	DLE	01/21/04		± 2°					VXX27633			
C	N05-0006	YS	01/11/05										
D	N05-0223	AILEI	09/05/05	dr	D LEGRAND	01/29/03	← MM →	product family		DIN	code		
				enrg	F TISSERAND	01/29/03		size		dwg no		sheet	
				chr	JF NOTTEAU	01/29/03		scale		1:1	A4	VJW12166	1 of 1
				appd	F.TI	01/29/03							
sheet index	revision	D											
	sheet	1											