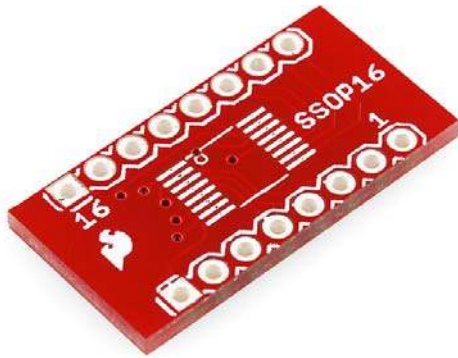




SparkFun SSOP to DIP Adapter - 16-Pin

BOB-00498 ROHS ✓

★ ★ ☆ ☆ ☆ 3



Description: 8, 16, 20, and 28-Pin SSOP to DIP break out boards. The footprint was rotated to accommodate different width SSOP devices and can be used with any pin count up to 28 pins. Designed to be used with 0.65mm pitch devices but can also be used with 0.025" pitch devices (comes out to ~0.635mm). We've made these 0.635mm devices fit just fine. Can be used with packages from 0.200" (5mm) up to 0.450" (11.4mm) in width.

40 Pin break-away headers are perfect for use with these custom PCBs. Machine pin headers may be a better option for IC sockets. Pad layout fits all standard SSOP .65mm and can accommodate .635mm pitch devices.

Dimensions:

- 8-pin: 0.6 x 0.4" (15.24 x 10.16mm) 500mil DIP spacing
- 16-pin: 1.0 x 0.4" (25.4 x 10.16mm) 400mil DIP spacing
- 20-pin: 0.8 x 1.0" (20.32 x 25.4mm) 700mil DIP spacing
- 28-pin: 1.4 x 0.7" (35.56 x 17.78mm) 600mil DIP spacing.