

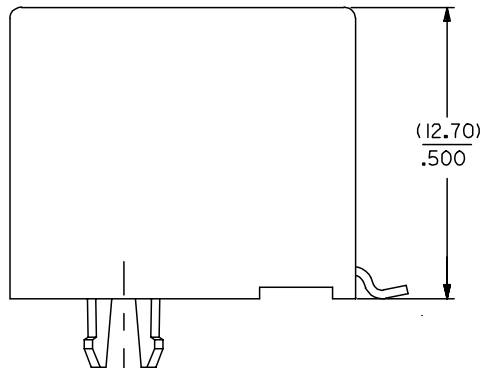
10 9 8 7 6 5 4 3 2 1

F
E
D
C
B
A

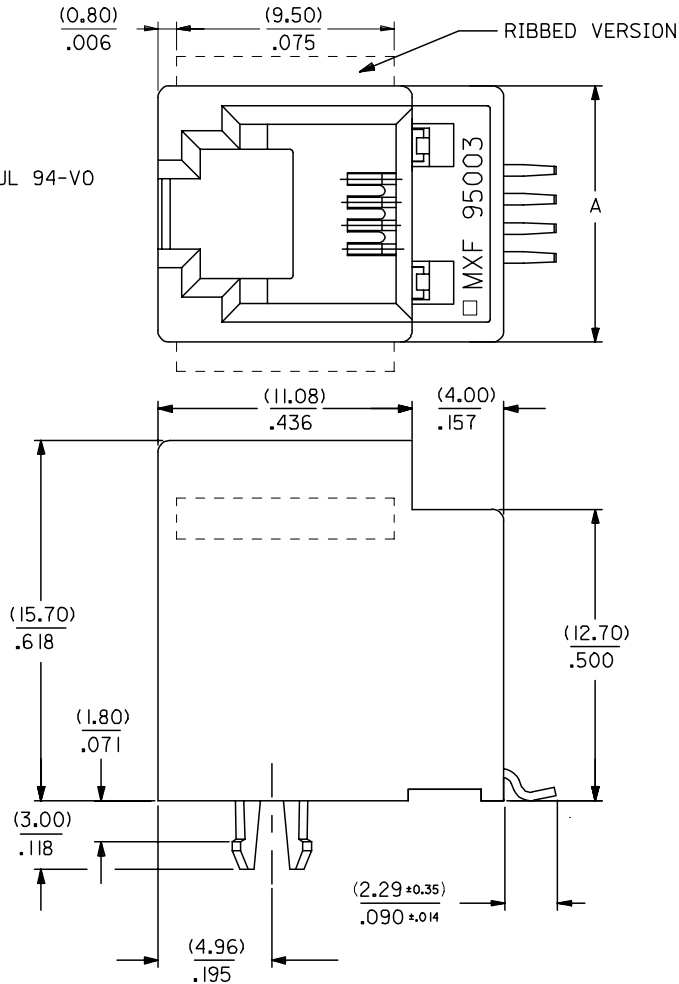
NOTES :

1- MATERIAL:

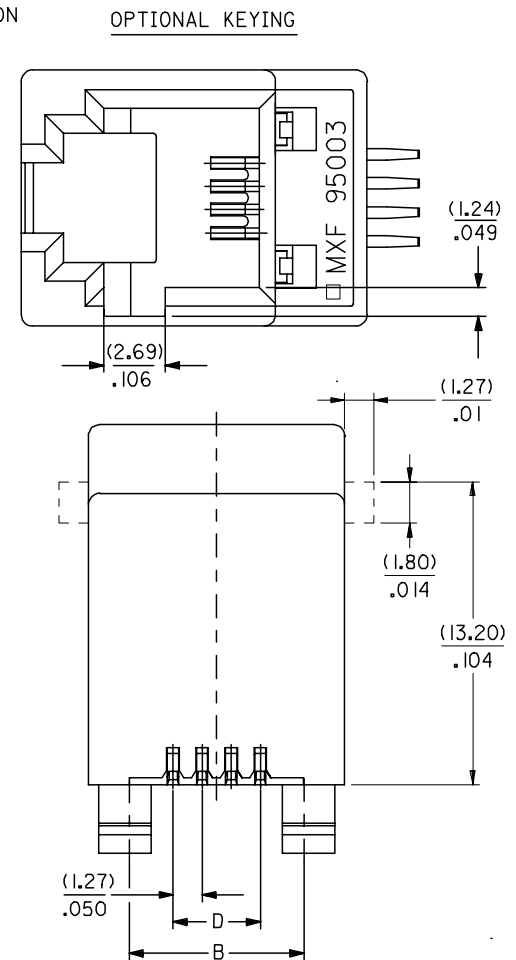
- HOUSING: POLYAMIDE 4/6 FIBER GLASS FILLED UL 94-V0
COLOR GREY OR BLACK.
- 2- SEE OTHER NOTES SHEET 1.



SHORT VERSION



RIBBED VERSION



OPTIONAL KEYING

ENTER DESCRIPTION EC NO: MG2005-0119 DRAWN: KNOLLER 2004/10/06 CHK'D: CARABET 2004/10/06 APPR: KNOLLER 2004/10/11	DESCRIPTION K	QUALITY SYMBOLS ▽=0 ▽7=0	GENERAL TOLERANCES (UNLESS SPECIFIED) mm INCH 4 PLACES ± --- ± --- 3 PLACES ± --- ± .006 2 PLACES ± 0.15 ± .010 1 PLACE ± 0.25 ± --- ANGULAR ± .5 °	DIMENSION STYLE MM/IN	SCALE 5:1	DESIGN UNITS METRIC	THIRD ANGLE PROJECTION
		DRAWN BY GP	DATE 95/05/16	TITLE LOW PROFILE T/E JACK (SMT VERSION)			
		CHECKED BY	DATE	MOLEX INCORPORATED			
		APPROVED BY	DATE	MATERIAL NO. SEE SHT. 4, 5	DOCUMENT NO. SDA-95003-F	SHEET NO. 2 OF 6	

DRAFT WHERE APPLICABLE MUST REMAIN WITHIN DIMENSIONS

THIS DRAWING CONTAINS INFORMATION THAT IS PROPRIETARY TO MOLEX INCORPORATED AND SHOULD NOT BE USED WITHOUT WRITTEN PERMISSION

9 8 7 6 5 4 3 2 1

TRAY PACKAGING, SEE PACKAGING SPEC PK95003 SHEET 1

PART NO FOR JACK ASSEMBLY THROUGH HOLE STANDARD VERSION
PART NO FOR JACK ASSEMBLY THROUGH HOLE SHORT VERSION
PART NO FOR JACK ASSEMBLY S.M.T. SHORT VERSION

HOUSING SIZE	LOADED CONTACTS	PLATING	POLYESTER FIBER GLASS FILED 94V0 COLOR BLACK					POLYESTER FIBER GLASS FILED 94V0 COLOR BLACK					POLYAMIDE 4/6 FIBER GLASS FILED 94V0 COLOR GREY					POLYAMIDE 4/6 FIBER GLASS FILED 94V0 COLOR BLACK																										
			NO KEY	TOOLED	KEY	TOOLED	TOOLED	NO KEY	TOOLED	KEY	TOOLED	TOOLED	NO KEY	TOOLED	KEY	TOOLED	TOOLED	NO KEY	TOOLED	KEY	TOOLED	TOOLED																						
			NO RIB	NO RIB	NO RIB	NO RIB	NO RIB	NO RIB	NO RIB	NO RIB	NO RIB	NO RIB	NO RIB	NO RIB	NO RIB	NO RIB	NO RIB	NO RIB	NO RIB	NO RIB	NO RIB	NO RIB																						
4	4	2	95003-2441	X	95003-2442						95003-2444		95003-2445									95003-6444		95003-6445									95003-6454		95003-6455									
6	4	2	95003-2641	X	95003-2642						95003-2644		95003-2645										95003-6644		95003-6645									95003-6654		95003-6655								
6	6	2	95003-2661	X	95003-2662						95003-2664	X	95003-2665										95003-6664	X	95003-6665									95003-6674	X	95003-6675								
8	4	2	95003-2841		95003-2842						95003-2844		95003-2845										95003-6844		95003-6845									95003-6854		95003-6855								
8	6	2	95003-2861		95003-2862						95003-2864		95003-2865										95003-6864		95003-6865									95003-6874		95003-6875								
8	8	2	95003-2881	X	95003-2882	X					95003-2884		95003-2885										95003-6884		95003-6885									95003-6894		95003-6895								

TOOLED	X
NOT TOOLED	

ENTER DESCRIPTION EC NO: MG2005-0119 2004/10/06 DRW:KNOLLER 2004/10/06 CHKD:FCARABET 2004/10/06 APPR:KNOLLER 2004/10/11	QUALITY SYMBOLS ▽=0 ▽=0	GENERAL TOLERANCES (UNLESS SPECIFIED)		DIMENSION STYLE MM/IN		SCALE ---	DESIGN UNITS METRIC	THIRD ANGLE PROJECTION			
		4 PLACES ±--- ±--- 3 PLACES ±--- ±--- 2 PLACES ±--- ±--- 1 PLACE ±--- ±---		mm INCH ±--- ±--- ±--- ±--- ±--- ±--- ±--- ±---		DRAWN BY DATE GP 95/05/15		TITLE		LOW PROFILE T/E JACK THROUGH HOLE STD. VERS. THROUGH H. SMT SHORT V. MOLEX INCORPORATED	
		ANGULAR ±---°		DRAFT WHERE APPLICABLE MUST REMAIN WITHIN DIMENSIONS		APPROVED BY DATE		DOCUMENT NO.			
		K		SIZE A3		MATERIAL NO.		SDA-95003-F		SHEET NO. 4 OF 6	