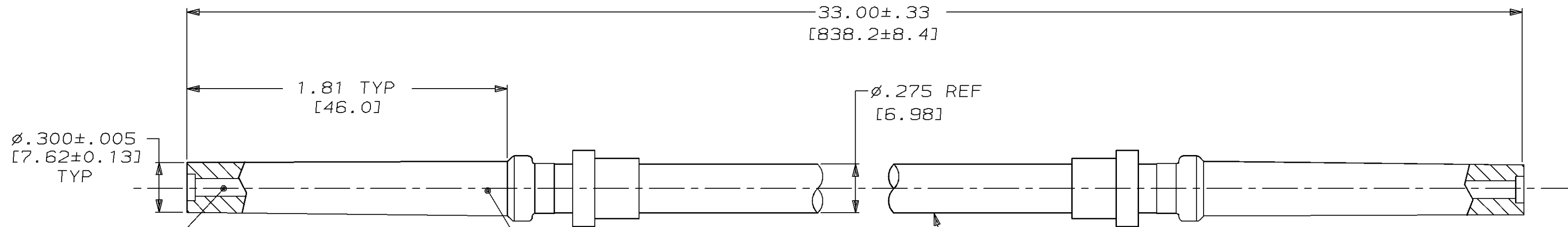


THIS DRAWING IS UNPUBLISHED. RELEASED FOR PUBLICATION ,19 .  
 © COPYRIGHT 19 BY AMP INCORPORATED. ALL INTERNATIONAL RIGHTS RESERVED.

PROD	LOC	DIST	P	F	ZONE	LTR	DESCRIPTION	DATE	APPD
4092	DF	50				0	RELEASED PER 0600-2907-94 CT	10-94	DW



SOCKET; SIZE #16 (QTY=2)  
 MAT'L: LEADED COPPER PER ASTM-B-301  
 FINISH: GOLD PER MIL-G-45204  
 OVER NICKEL PER QQ-N-290

MOLDED END TYP  
 SILICONE RUBBER

FERRULE (QTY=2)  
 MAT'L: POLYESTER  
 MLDG. CMPD.  
 COLOR: BLACK

#16 AWG SILICONE  
 INSULATED LEAD WIRE  
 COLOR: WHITE

443068-1  
 PART NO.

1. MARKED PER MIL-STD-130.
2. TO MATE WITH AMP LGH-3 RECEPTACLE WITH 1.81 [46.0] BARREL DEPTH.

DO NOT SCALE PRINT.  
 UNLESS SPECIFIED  
 DIMENSIONS IN INCHES [mm]  
 TOLERANCES ON:  
 2 PLC DEC ± .02 [0.5]  
 3 PLC DEC ± -  
 ANGLES ± -

MATERIAL  
 SEE CALLOUTS

FINISH  
 SEE CALLOUTS

DR 10-4-94  
 C.C. THOMAS

CHK 10-5-94  
 D. WEYANDT

APPD 10-5-94  
 D. WEYANDT

APPD 10-5-94  
 C. THOMAS

PRODUCT SPEC  
 -

APPLICATION SPEC  
 -

WEIGHT  
 -

AMP Incorporated Harrisburg, PA 17105-3608			
			NAME LEAD ASSY, POS STOP, DBL END LGH-3 (NO CAP)
SIZE C	CAGE CODE 00779	DRAWING NO 443068	
SCALE 2:1	SHEET 1 OF 1		