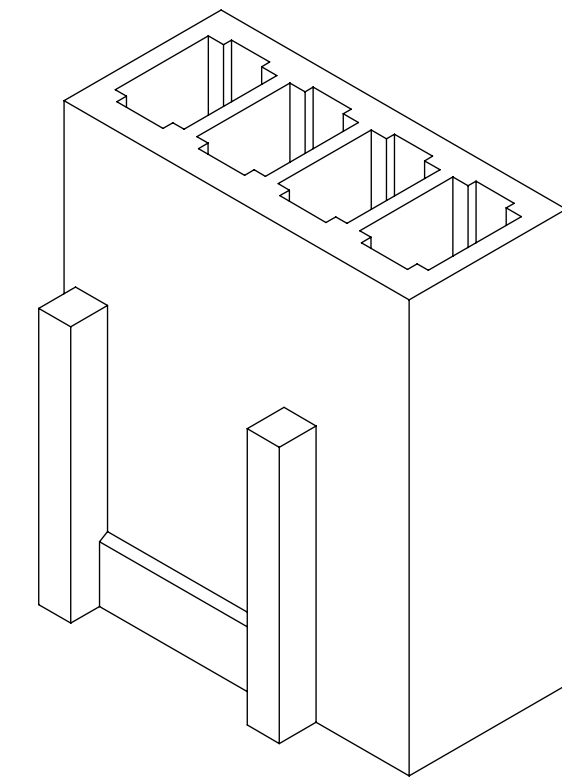
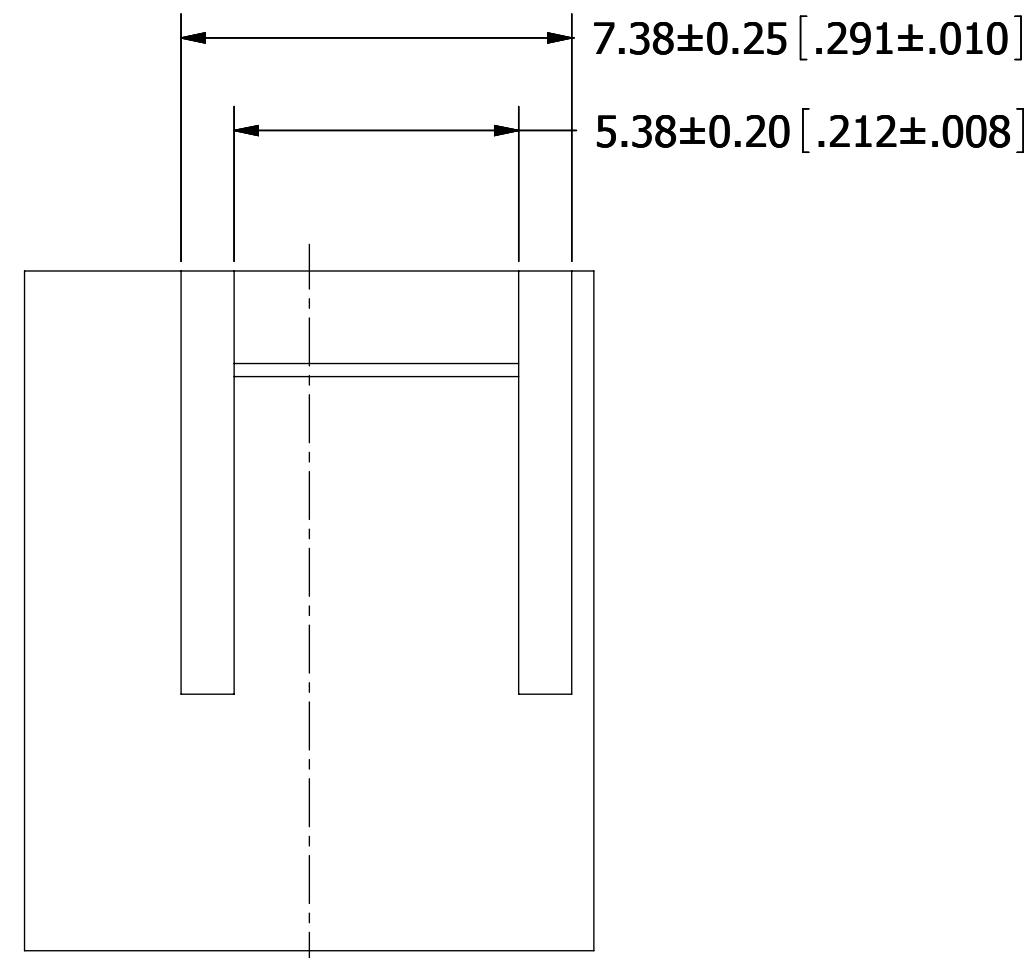
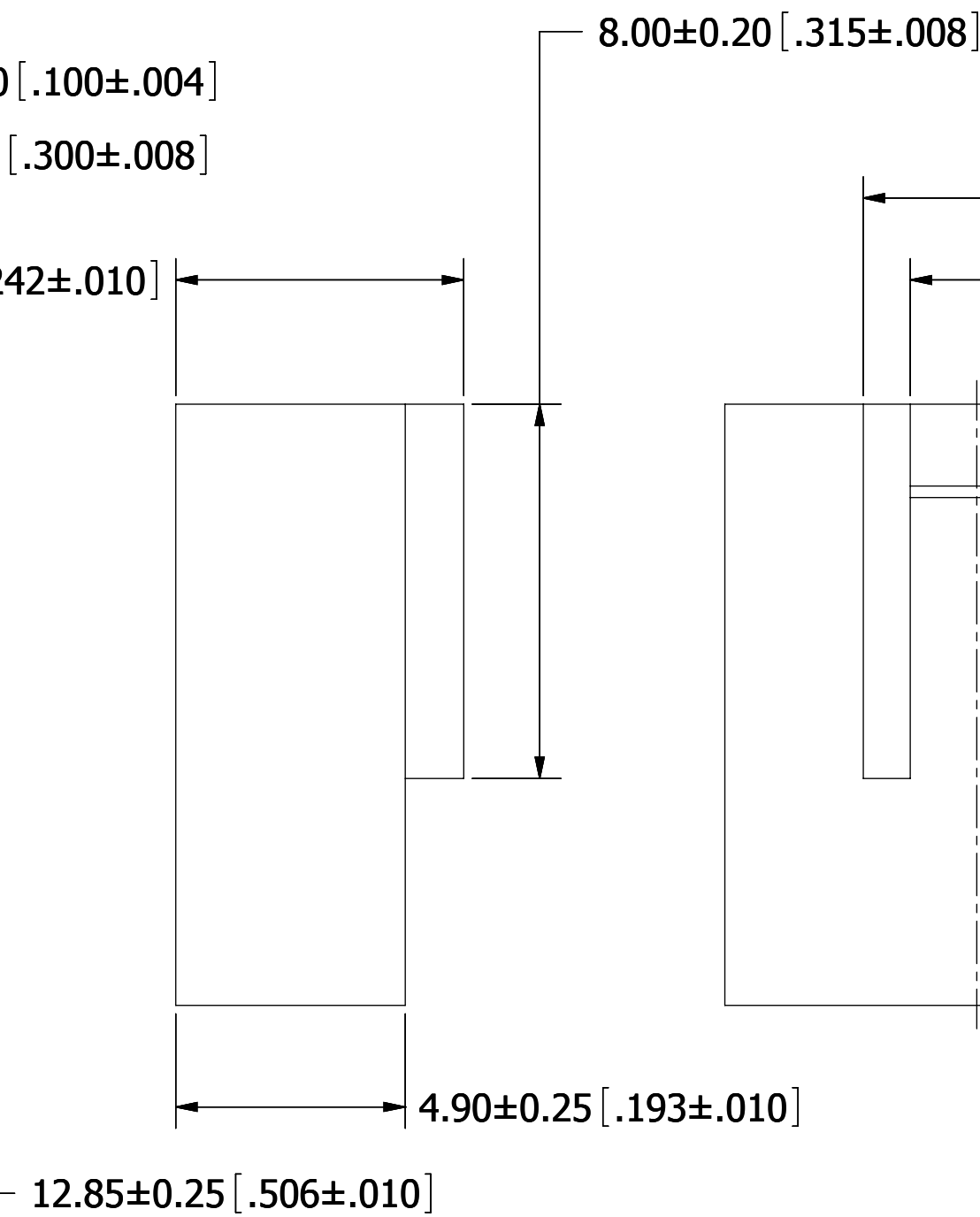
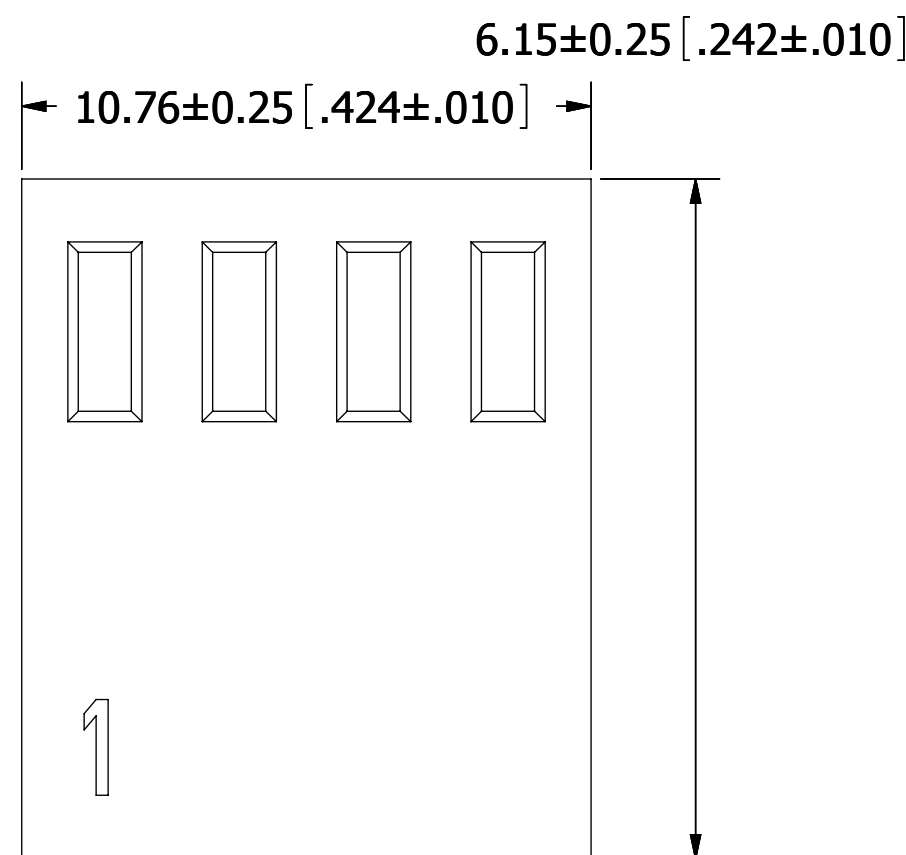
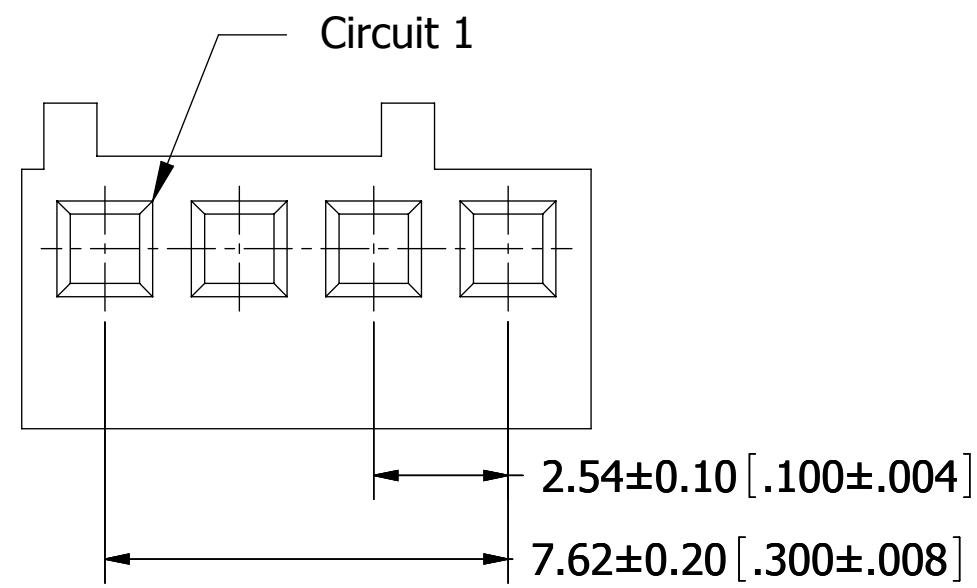


PART NUMBER CODING

SWH25C-NULC-S04-UU-WH

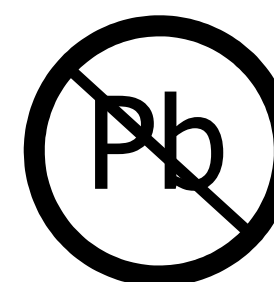
NUMBER OF POSITIONS

(CONTACTS PER ROW)



NOTES:

1. INSULATOR MATERIAL: NYLON66, UL94V-0, COLOR: WHITE.
2. CURRENT RATING: 4 AMPS.
3. VOLTAGE RATING: 250V AC/DC.
4. INSULATOR RESISTANCE: 1000 MEGOHMS MIN.
5. CONTACT RESISTANCE: 10 MILLIOHMS MAX.
6. DIELECTRIC WITHSTANDING VOLTAGE: 1000V AC.
7. OPERATING TEMPERATURE: -25° C TO +85° C.
8. SUITABLE FOR SWT25X SERIES TERMINAL.
9. MATES WITH SWR25C SERIES SINGLE ROW WAFER.



RoHS COMPLIANT

UNLESS OTHERWISE SPECIFIED:
 DIMENSIONS ARE IN MM(INCHES)
 TOLERANCES:
 ANGULAR: ± 5°
 .X= ± .3 [.01]
 .XX= ± .15 [.006]
 .XXX= ± .500 [.0020]
 SURFACE FINISH: 63 R_a
 REMOVE ALL BURRS AND SHARP EDGES .010 MAX

INTERPRET DIMENSIONS AND GEOMETRIC TOLERANCING PER: ANSI Y14.5M-1994

DATE	NAME
9/17/09	JH

THE INFORMATION HEREIN CONTAINS PROPRIETARY INFORMATION OF SULLINS ELECTRONICS AND IS NOT TO BE REPRODUCED, USED OR DISCLOSED TO OTHERS FOR ANY PURPOSE EXCEPT AS SPECIFICALLY AUTHORIZED IN WRITING BY AN OFFICER OF SULLINS ELECTRONICS.

SULLINS CONNECTOR SOLUTIONS	
DESCRIPTION HOUSING 2.54mm CC, 1 ROW	
PART NUMBER SWH25C-NULC-S04-UU-WH	
SIZE C	DWG. NO. 11401
SCALE: 7:1	REV A
SHEET 1 OF 1	

REVISIONS				
REV.	ECO. NO	DESCRIPTION	DATE	BY
A	2006	INITIAL RELEASE	9/17/09	JH