

ELECTRICAL.

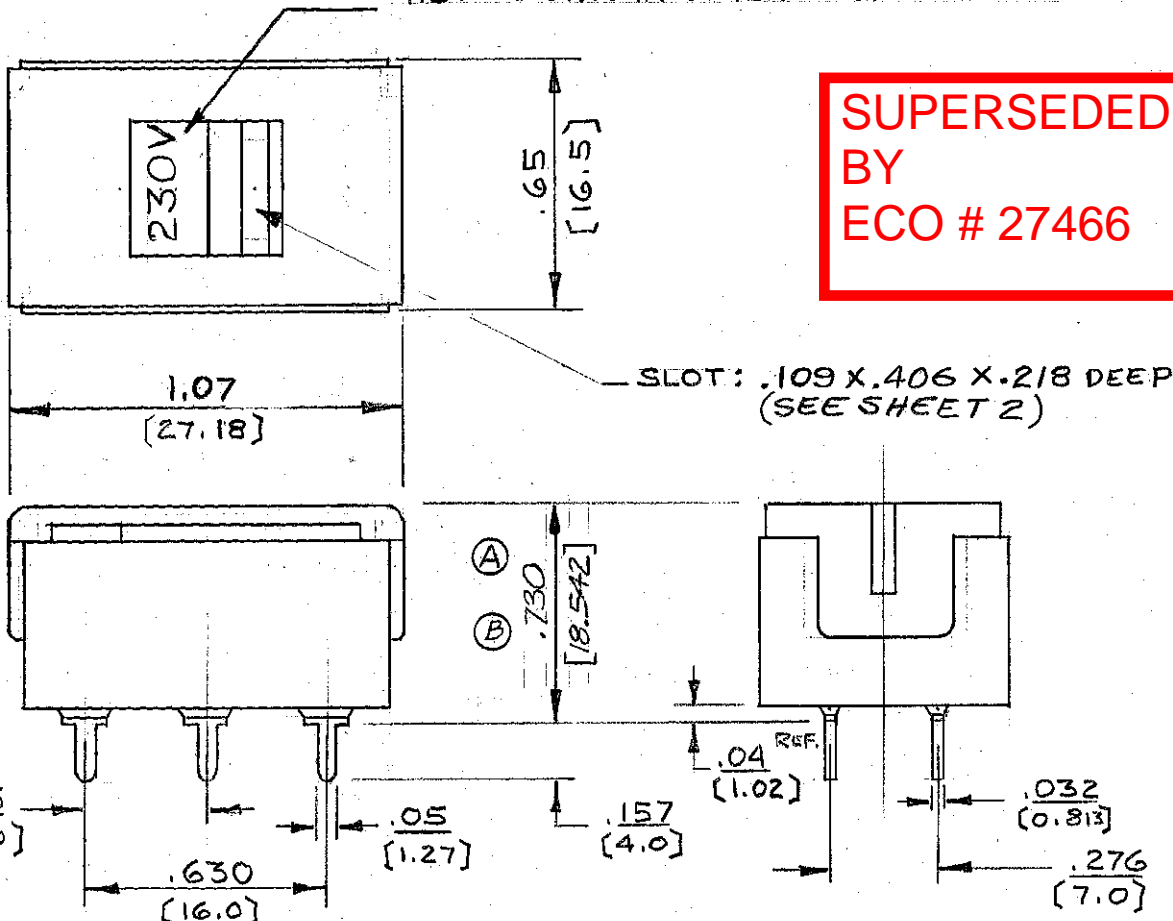
2A. 250 VAC, CARRY 6A.
DIEL. WITHST. VOLTAGE 2000 VAC
50-60 HZ, ONE MINUTE BETWEEN
ALL TERMINALS.

MECHANICAL.

MATERIALS - HOUSING: PPS
BUTTON: NYLON
TERMINALS: COP. ALLOY - SIL. PL.
SLIDER: BI-METAL - SIL. ON COP. ALL.
COVER: NYLON

115V SHOWN IN OTHER POS.

**SUPERSEDED
BY
ECO # 27466**



★ STAR SYMBOL DENOTES CRITICAL DIMENSION. SEE S/C ENGINEERING STANDARD ES-0001.	SIZE	WIDTH	MULT.	LBS. PER M	TEMPER.
---	------	-------	-------	------------	---------

THIS DRAWING DESCRIBES A DESIGN CONSIDERED PROPRIETARY IN NATURE, DEVELOPED AND MANUFACTURED BY SWITCHCRAFT, INC., AND IS RELEASED ON A CONFIDENTIAL BASIS FOR IDENTIFICATION PURPOSE ONLY.

UNLESS OTHERWISE SPECIFIED:

- 1 - DECIMAL DIMENSIONS ± .005
- 2 - FRACTIONAL DIMENSIONS ± .005
- 3 - ANGLES ± .5°
- 4 - ALL DIA'S CONCENTRIC WITHIN .005 T.I.R.
- 5 - ALL DIMENSIONS IN INCHES / [mm]
- 6 - FOR THREADS USE UNIFIED PLUG AND RING GAGES ONLY.
- 7 - REMOVE ALL BURRS.
- 8 - PART TO BE FABRICATED AS SPECIFIED. MAKE NO DIMENSIONAL ALLOWANCES FOR APPLIED FINISHES, I.E., PLATING, PAINTING, ETC.
- 9 - HOLES ON SAME CENTERLINE MUST BE ALIGNED WITHIN ± .002

DO NOT SCALE DRAWING

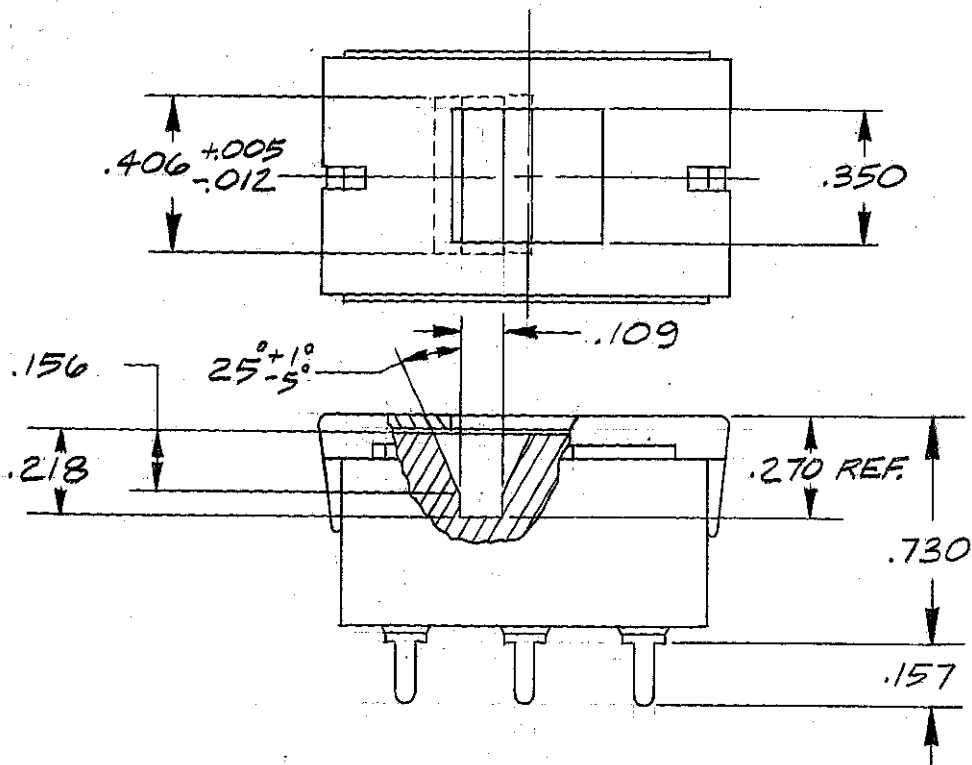
DRAWN BY KL	DATE SEP-13-77
CHECKED BY J.S.	DATE 6-5-78
APPROVED BY W.H.	DATE 7-28-78
SCALE	
FIRST USED ON	

FINISH	
PER FINISH SPEC. NO.	
MATERIAL	
PER MAT. SPEC. NO.	

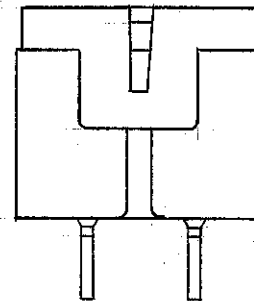


NAME SLIDE SWITCH VOLTAGE SELECTOR. 2 POS. DETENTED. D.P.D.T.	PART NO. EPS2-PC1	ISSUE 4
SHEET 1 OF 2		

ISSY	REVISION	BY	DATE
1	WAS EX-7069	KL	MAR 21-78
2	ECO 9787 WAS .60	RB	9-26-78
3	ECO 9848 WAS .600	RB	12-4-78
4	19401	TD	6-21-78



SUPERSEDED
BY
ECO # 27466



★ STAR SYMBOL DENOTES CRITICAL DIMENSION, SEE S/C ENGINEERING STANDARD ES-0001.	SIZE	WIDTH	MULT.	LBS. PER M	TEMPER
---	------	-------	-------	------------	--------

THIS DRAWING DESCRIBES A DESIGN CONSIDERED PROPRIETARY IN NATURE, DEVELOPED AND MANUFACTURED BY SWITCHCRAFT, INC., AND IS RELEASED ON A CONFIDENTIAL BASIS FOR IDENTIFICATION PURPOSE ONLY.

UNLESS OTHERWISE SPECIFIED:

- 1 - DECIMAL DIMENSIONS \pm ~~0.005~~
- 2 - FRACTIONAL DIMENSIONS \pm ~~0.005~~
- 3 - ANGLES \pm ~~0.005~~
- 4 - ALL DIA'S CONCENTRIC WITHIN ~~0.005~~ T.I.R.
- 5 - ALL DIMENSIONS IN INCHES
- 6 - FOR THREADS USE UNIFIED PLUG AND RING GAGES ONLY.
- 7 - REMOVE ALL BURRS.
- 8 - PART TO BE FABRICATED AS SPECIFIED. MAKE NO DIMENSIONAL ALLOWANCES FOR APPLIED FINISHES, I.E., PLATING, PAINTING, ETC.
- 9 - HOLES ON SAME CENTERLINE MUST BE ALIGNED WITHIN \pm ~~0.005~~

DRAWN BY RB	DATE 11-24-80
CHECKED BY J.S.	DATE 11-24-80
APPROVED BY	DATE

FINISH	PER FINISH SPEC. NO. _____
MATERIAL	PER MAT. SPEC. NO. _____

SCALE 2:1
FIRST USED ON



NAME **SLIDE SWITCH
VOLTAGE SELECTOR
2 POS. DETENTED
D.P.D.T.**

PART NO. EPS2-PC1	ISSUE 4
SHEET 2 OF 2	

DO NOT SCALE DRAWING

ROUTING

