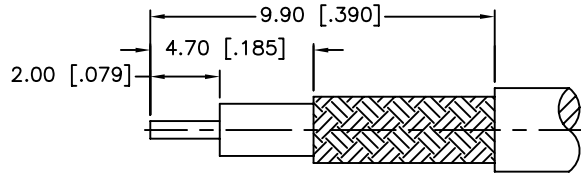
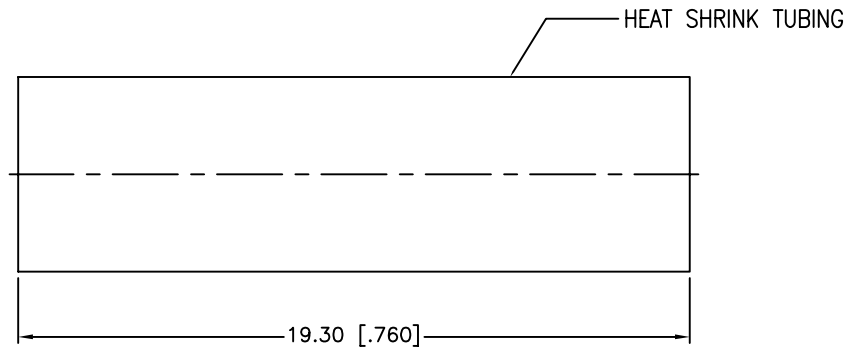
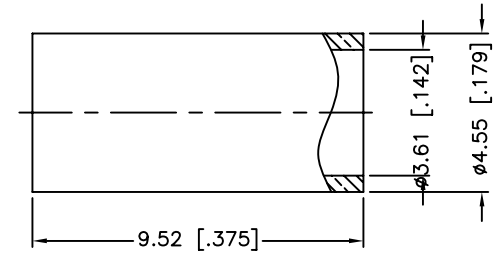
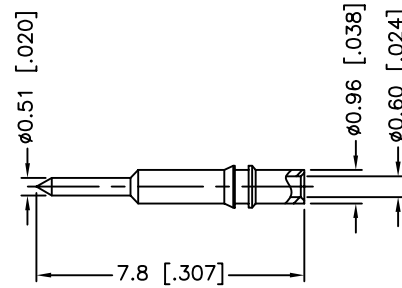
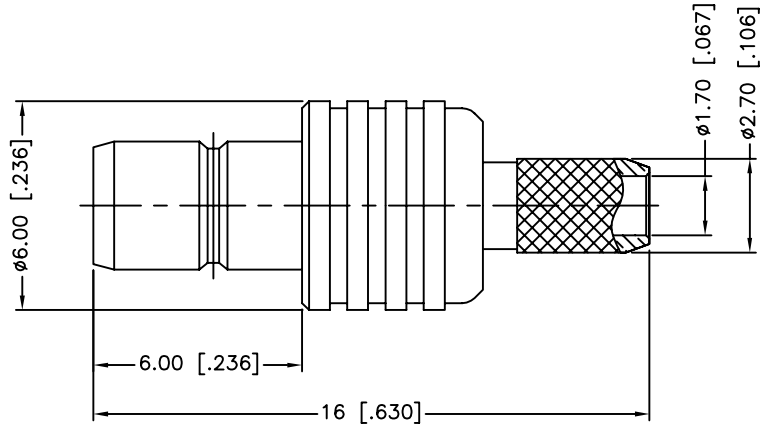


REV.	DATE	ECR NO.	DESCRIPTION
NC	12/17/09	XXXXXX	INITIAL RELEASE



RECOMMENDED  
CABLE STRIPPING DIM'S



1. CRIMPED FERRULE  
HEX CRIMP SIZE .151"
2. CRIMPED CONTACT PIN  
SQ. CRIMP SIZE 0.7mm

9			1
8			1
7	HEAT SHRINK TUBING	BLACK	1
6	FERRULE	COPPER	1
5	CONTACT PIN	BRASS	1
4	BARREL	BRASS	1
3	INSULATOR	PTFE	1
2	INSULATOR	PTFE	1
1	BODY	BRASS	1
	DESCRIPTION	MATERIAL	FINISH

UNLESS OTHERWISE SPECIFIED DIMENSIONS ARE IN MILLIMETERS. DIMENSIONS IN [ ] ARE IN INCHES AND FOR CUSTOMER REFERENCE ONLY.

UNLESS OTHERWISE SPECIFIED TOLERANCES FOR MILLIMETERS ARE:  
0.5 - 8mm  $\pm$  0.20mm  
8 - 30mm  $\pm$  0.40mm  
30 - 120mm  $\pm$  0.50mm

UNLESS OTHERWISE SPECIFIED TOLERANCES FOR INCHES ARE:  
.020 - .315 =  $\pm$  0.007"  
.315 - 1.180 =  $\pm$  0.015"  
1.180 - 4.724 =  $\pm$  0.020"

DO NOT SCALE DRAWING

APPROVALS	DATE
DRAWN C.WANG	12/17/09
CHECKED	
ISSUED	
SHEET 1 OF 1	
CAD FILE C:/CONNEX/142190.DWG	

<b>Amphenol Connex</b>			
PART DESCRIPTION <b>SMB CRIMP JACK (FOR RG-316U/D)</b>			
PART NO. <b>142190</b>			
DWG. NO.	142190.DWG	REV.	NC
SIZE	A	SCALE	NA