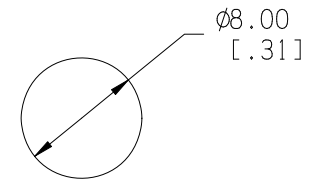
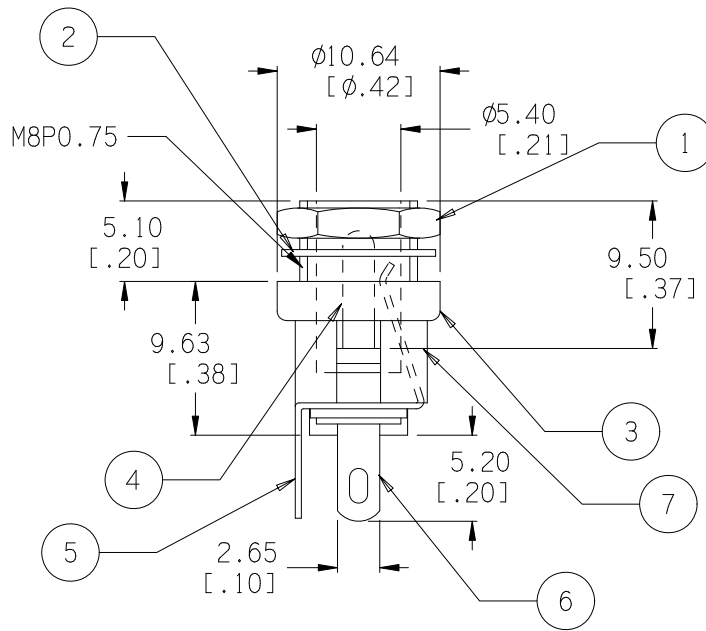
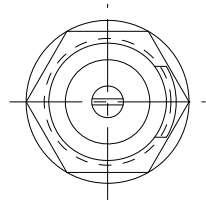


ELECTRICAL SPECS:

1. LIFE: 10,000 INSERTION/WITHDRAWAL CYCLE MINIMUM
2. CONTACT RESISTANCE: 50mU MAXIMUM
3. INSULATION RESISTANCE: 1000mU MINIMUM
4. DIELECTRIC WITHSTANDING VOLTAGE: 500AC MAXIMUM
5. MAXIMUM RATING: 5A, 12V DC



PANEL CUT-OUT

Date	SYM	REVISION RECORD	AUTH	DR.	CK.
05/08/04	A	ADDED ELECTRICAL SPECS	T.B.	B.S.	
08/25/17	B	DIM. 10.64 WAS 10.80 DIM. 5.10 WAS 5.50 DIM. 9.63 WAS 10.20 DIM. 5.20 WAS 5.70 DIM. 9.50 WAS 10.00 DIM. 5.40 WAS 5.60	T.B.	B.S.	

ITEM NO.	PART NAME	MATL. SPECIFICATION	Tolerance (Inches)	MPD Memory Protection Devices, Inc. 200 Broad Hollow Road, Farmingdale, New York 11735	
1	HEX. NUT	BRASS, NICKLE PLTD.	Decimal	Scale	Drawn By B.S.
2	FLAT WASHER	IRON, NICKLE PLTD.			
3	TOP HOUSING	BRASS, NICKLE PLTD.	±.5 (.020)	Title	DC JACK - CHASSIS MOUNT, OPEN CIRCUIT
4	PIN (Ø2.1)	COPPER, NICKLE PLTD.			
5	SOLDER TERMINAL	BRASS, SILVER PLTD.			
6	SOLDER TERMINAL	BRASS, SILVER PLTD.	Angular	Date	Drawing Number
7	BOTTOM HOUSING	NYLON, BLACK			
			± 3°	08/25/17	EJ501A

Approved By T.B.